

# *South Martin Industrial Park*

## NEW BUILDINGS WITH YARD FOR LEASE

A Unique Opportunity for Direct Access to I-95 & Frontage on Florida's Turnpike



Kanner Highway between I-95 and Florida's Turnpike  
Stuart, FL





Property Site Plan

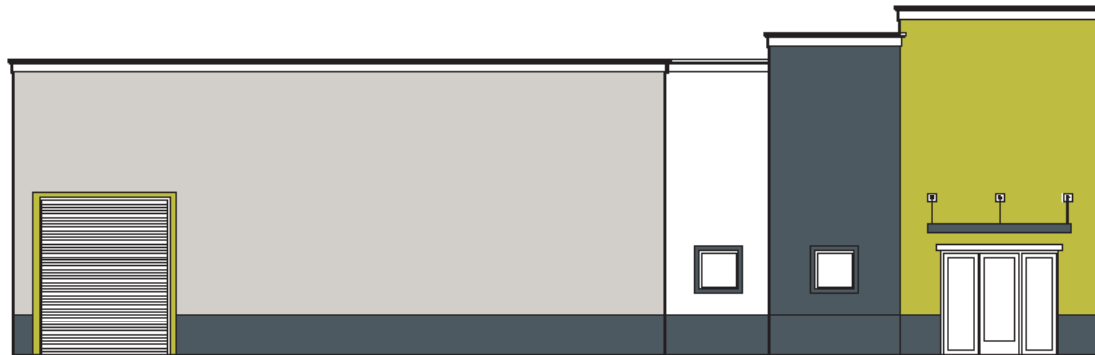
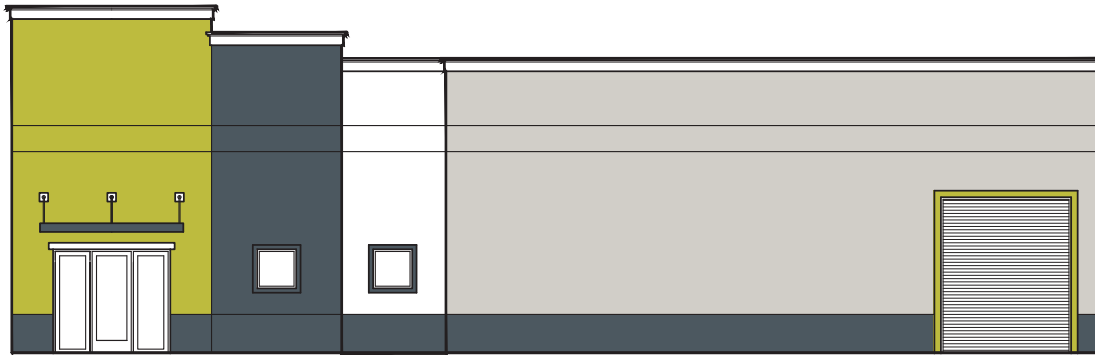
Building Specs



- From ±7,595 SF Warehouse/ Office/Flex to ±11,697 SF
- Freestanding Buildings with Secure Yard Area
- Wide Range of Uses Permitted
- Grade Level Loading
- Easy access to Interstate 95 via SW Kanner Highway
- Visibility to Florida's Turnpike

**Lease Rate**  
Call For Details

# Warehouse Buildings with Yard/Storage Space



## Building Specs

Minimum Divisible:	7,595 Square Feet
Maximum Contiguous Possible:	11,697 Square Feet
Overhead Doors:	10' x 12'
Exterior Walls:	Concrete Block Structure
Clear Height:	18' Clear
Slab on Grade:	6", 3,000 psi reinforced concrete
Exterior Windows:	1 5/16" insulated, impact, low E-glass
Electrical Service:	400 Amp, 120/208 Volt, 3-phase service
Lighting:	LED Site Lighting



# South Martin Industrial Park



For Additional Information, Please Contact:

**Kirk Nelson**

Executive Vice President  
+1 561 716 9936  
kirk.nelson@cbre.com

**Robert Smith**

Executive Vice President  
+1 561 707 5558  
robert.c.smith@cbre.com

**CBRE, Inc.**

Boca Raton, FL 33486  
+1 561 394 2100  
cbre.us/bocaraton

**CBRE**