

For Lease

4240 Rider Trail N

Earth City, MO 63045

69,548 SF



**DAN
BAMBERGER, SIOR**

EXECUTIVE VICE PRESIDENT
daniel.bamberger@colliers.com
314.584.6226

**CHAD
BURKEMPER, SIOR**

EXECUTIVE VICE PRESIDENT
chad.burkemper@colliers.com
314.584.6279

**DAN
LESINSKI, SIOR**

SENIOR VICE PRESIDENT
dan.lesinski@colliers.com
314.412.4345

**BILLY
SPENCE**

ASSOCIATE VICE PRESIDENT
billy.spence@colliers.com
636.278.0565

No warranty or representation, expressed or implied, is made as to the accuracy of the information contained herein, and same is submitted subject to error and omissions.

For Lease

4240 Rider Trail N

Earth City, MO 63045

69,548 SF



PROPERTY HIGHLIGHTS

Total Building SF	220,107 SF
Available SF	69,548 SF
Office SF	5,149 SF (mezzanine office)
Loading	Six (6) docks
Ceiling Height	33' clear height
Column Spacing	34' x 29'
Parking	50 auto spaces
Sprinkler	Wet
Occupancy	10/1/2026
Lease Rate	\$5.25 / SF, NNN



No warranty or representation, expressed or implied, is made as to the accuracy of the information contained herein, and same is submitted subject to error and omissions.

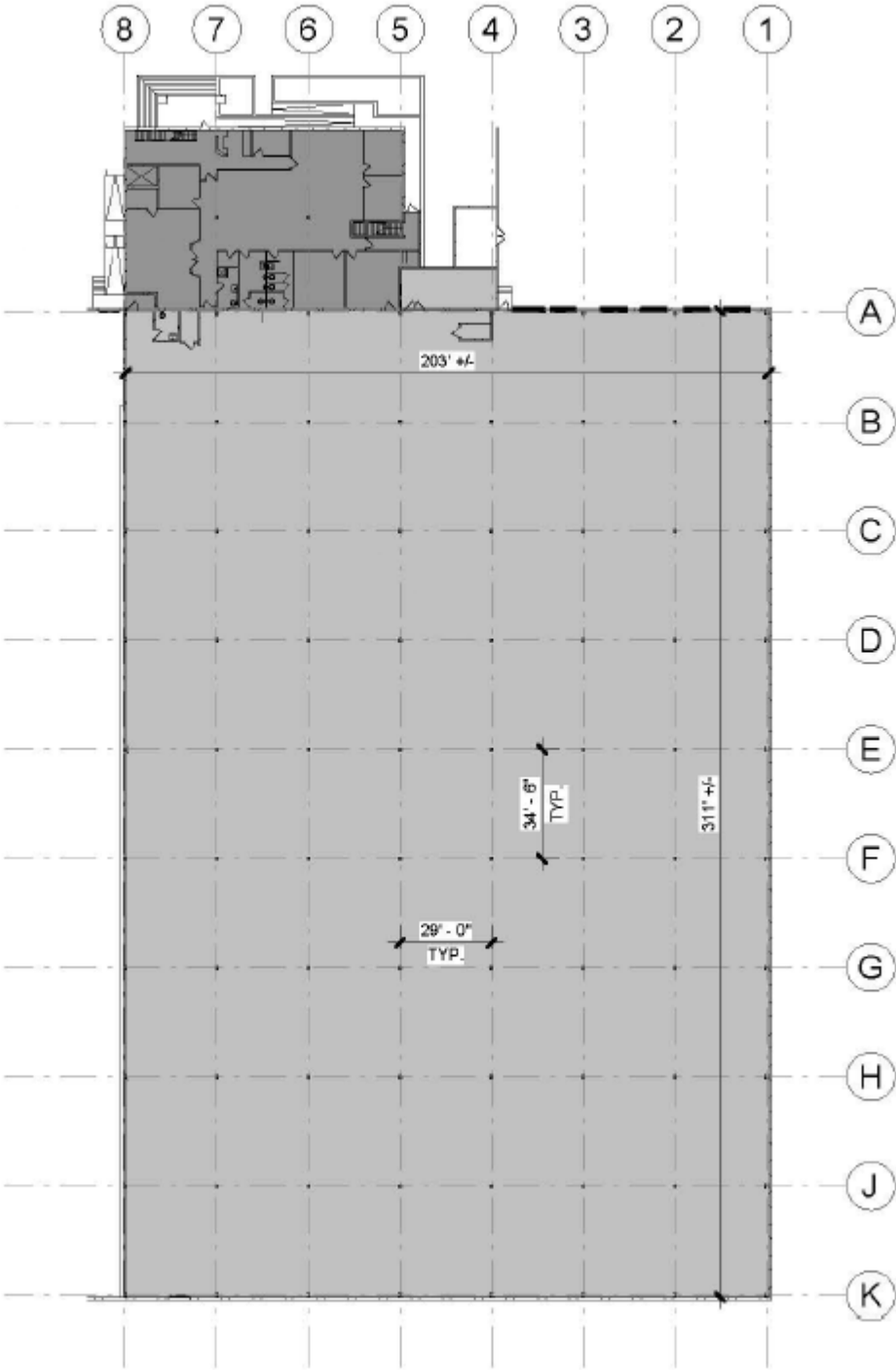
4240 Rider Trail N

Earth City, MO 63045

69,548 SF



FLOOR PLAN



For Lease

4240 Rider Trail N

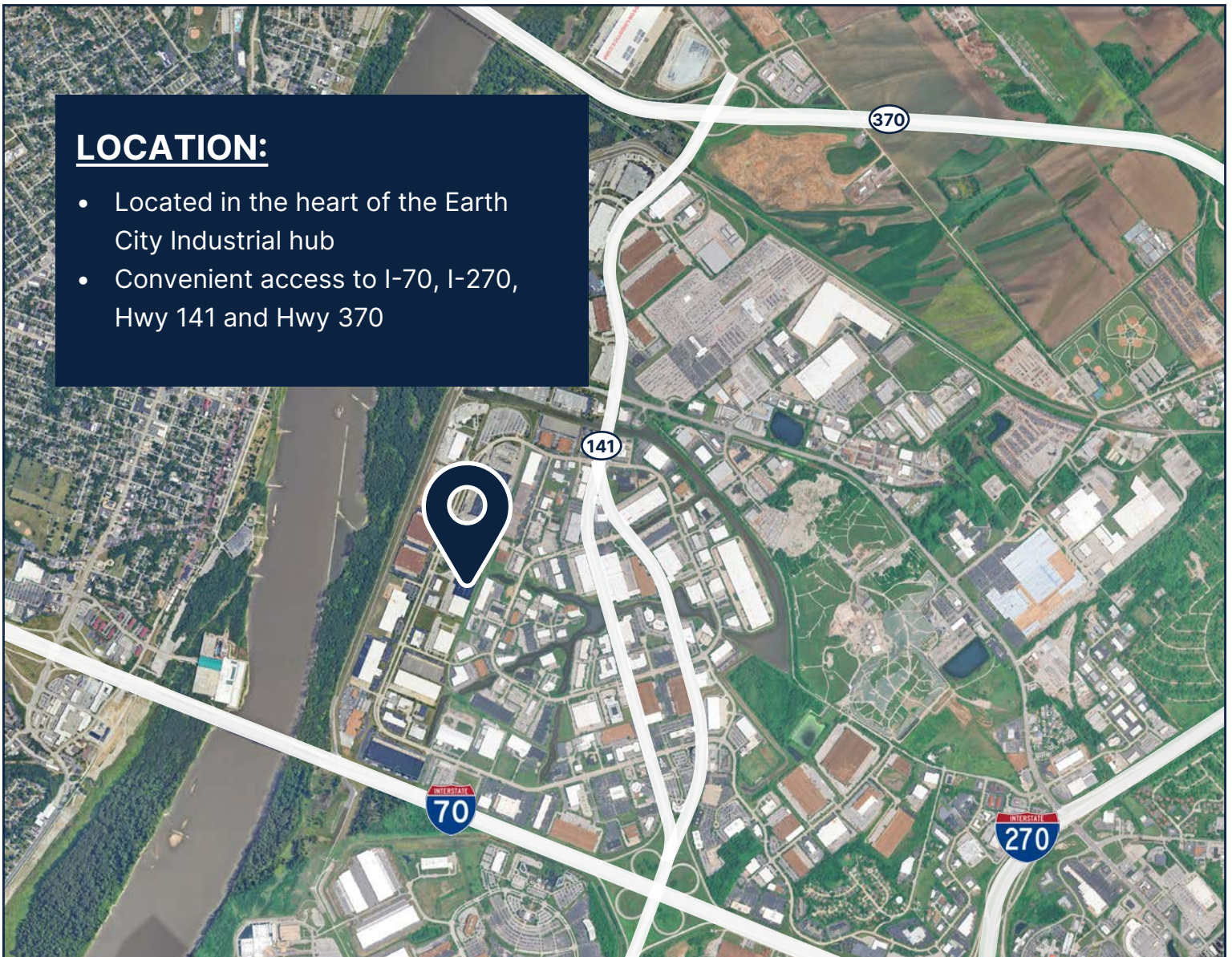
Earth City, MO 63045

69,548 SF



LOCATION:

- Located in the heart of the Earth City Industrial hub
- Convenient access to I-70, I-270, Hwy 141 and Hwy 370



7.8 Miles

to St. Louis Lambert
International Airport



1.5 Miles

to Highway 141



3.0 Miles

to Interstate 70