

**FOR LEASE**

355 Crestmont Drive | Fort Mill, SC 29708

# Carowinds Distribution Center



## ±197,028 SF INDUSTRIAL/MANUFACTURING SPACE

- Concrete Tilt-Up Construction
- 1,273 SF Existing Warehouse Office
- Facility Designed for Good Manufacturing Practice Standards
- Rear-Load Facility
- 7 (9' x 10') Dock-High Doors
- 1 (12' x 14') Drive-In Doors
- ±32' Clear Height
- ESFR Sprinkler System
- ±45' x 52' Column Spacing (Typical)
- Electrical Service 12,000 Amps 277/480 Volt
- Fully Air Conditioned
- ±275 Auto Parking Spaces

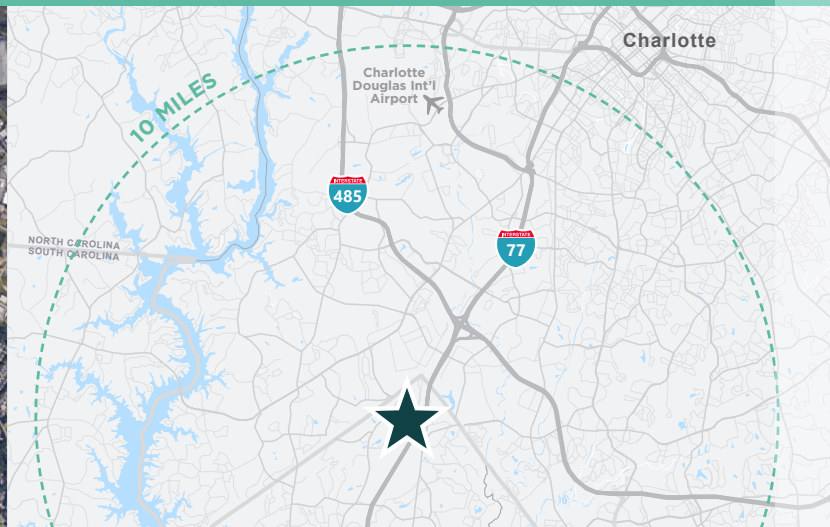
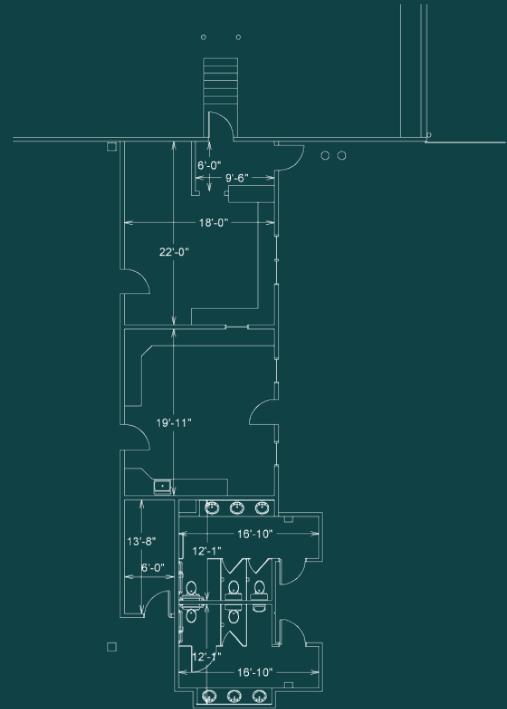
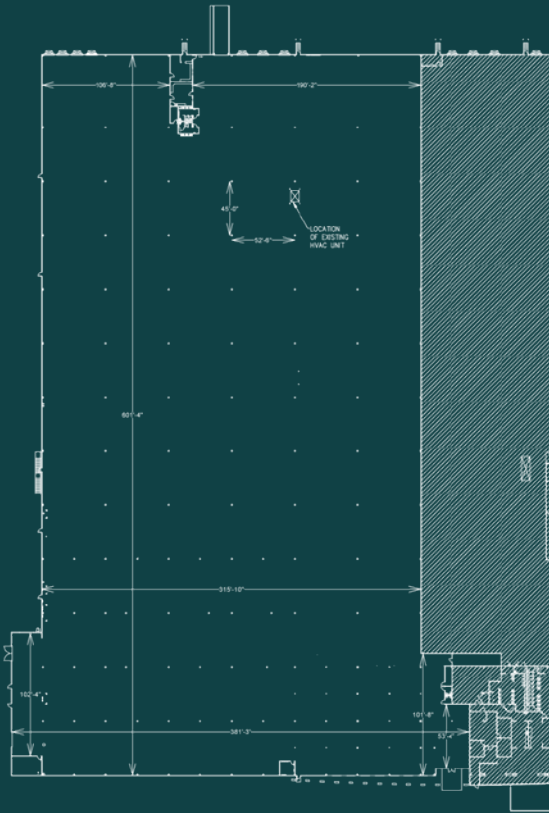
**FERMIN DEOCA**  
+1 704 335 4436  
fermin.deoca@cushwake.com

**MATT TREBLE**  
+1 704 335 4430  
matt.treble@cushwake.com



# Carowinds Distribution Center

±197,028 SF INDUSTRIAL/MANUFACTURING SPACE FOR LEASE



FOR MORE INFORMATION, PLEASE CONTACT

**FERMIN DEOCA**

+1 704 335 4436

fermin.deoca@cushwake.com

**MATT TREBLE**

+1 704 335 4430

matt.treble@cushwake.com



©2023 Cushman & Wakefield. All rights reserved. The information contained in this communication is strictly confidential. This information has been obtained from sources believed to be reliable but has not been verified. NO WARRANTY OR REPRESENTATION, EXPRESS OR IMPLIED, IS MADE AS TO THE CONDITION OF THE PROPERTY (OR PROPERTIES) REFERENCED HEREIN OR AS TO THE ACCURACY OR COMPLETENESS OF THE INFORMATION CONTAINED HEREIN, AND SAME IS SUBMITTED SUBJECT TO ERRORS, OMISSIONS, CHANGE OF PRICE, RENTAL OR OTHER CONDITIONS, WITHDRAWAL WITHOUT NOTICE, AND TO ANY SPECIAL LISTING CONDITIONS IMPOSED BY THE PROPERTY OWNER(S). ANY PROJECTIONS, OPINIONS OR ESTIMATES ARE SUBJECT TO UNCERTAINTY AND DO NOT SIGNIFY CURRENT OR FUTURE PROPERTY PERFORMANCE.