

PRIME CORNER RETAIL & AUTOMOTIVE SPACE IN LODI, CA



**SUBJECT
PROPERTY**



420 W. LODI AVE

Lodi, CA 95240

BEN RISHWAIN
209.461.6400 | ben@fcrai.com
CalDRE #01729449

ANDY LE
209.471.6358 | andy@fcrai.com
CA DRE #02110117

FIRST COMMERCIAL
REAL ESTATE & ADVISORY SERVICES

PROPERTY SUMMARY



LOCATION DESCRIPTION

This prime corner location offers high traffic, great accessibility, and unmatched visibility, surrounded by established neighboring brands like O'Reilly Auto Parts, Jack in the Box, and Domino's Pizza. Just a few blocks from Downtown Lodi, the property sits in a thriving commercial corridor supported by nearby residential neighborhoods.

PROPERTY HIGHLIGHTS

- **NNN Lease Structure** – Tenant pays pro-rata share of operating expenses.
- **Prominent Signage Opportunities** – High Visibility along W. Lodi Ave. and S. Hutchins St.
- **Ample Parking** – Shared lot with convenient access for customers and employees.
- **Versatile Use** – Ideal for retail, salon, automotive, office or service-based businesses.
- **420 - Ste B:** ±4,577 SF: Featuring an automotive area with one drive-in bay and ample shop space, along with a separate reception and waiting area.
- **420 - Ste C:** ±1,750 SF of standard retail space.

OFFERING SUMMARY

Lease Rate:	Negotiable
Available SF:	1,750 - 4,577 SF
Lot Size:	18,676 SF
Building Size:	14,633 SF

DEMOGRAPHICS	0.3 MILES	0.5 MILES	1 MILE
Total Households	724	1,878	8,366
Total Population	1,719	4,542	23,801
Average HH Income	\$103,724	\$106,729	\$85,799

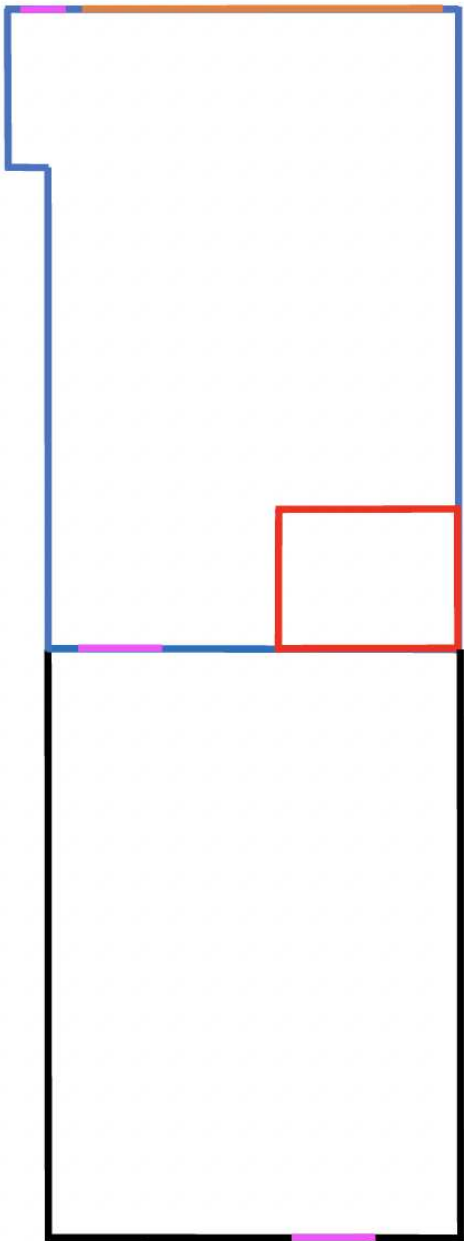
BEN RISHWAIN

209.461.6400 | ben@fcrei.com
CalDRE #01729449

ANDY LE

209.471.6358 | andy@fcrei.com
CA DRE #02110117

STE. C - FLOOR PLAN



- Shop/Warehouse Space
- Restroom
- Roll-Up Door (14'3" W x 10' H)
- Entrances

Front

BEN RISHWAIN

209.461.6400 | ben@fcrei.com
CalDRE #01729449

ANDY LE

209.471.6358 | andy@fcrei.com
CA DRE #02110117

RETAILER MAP



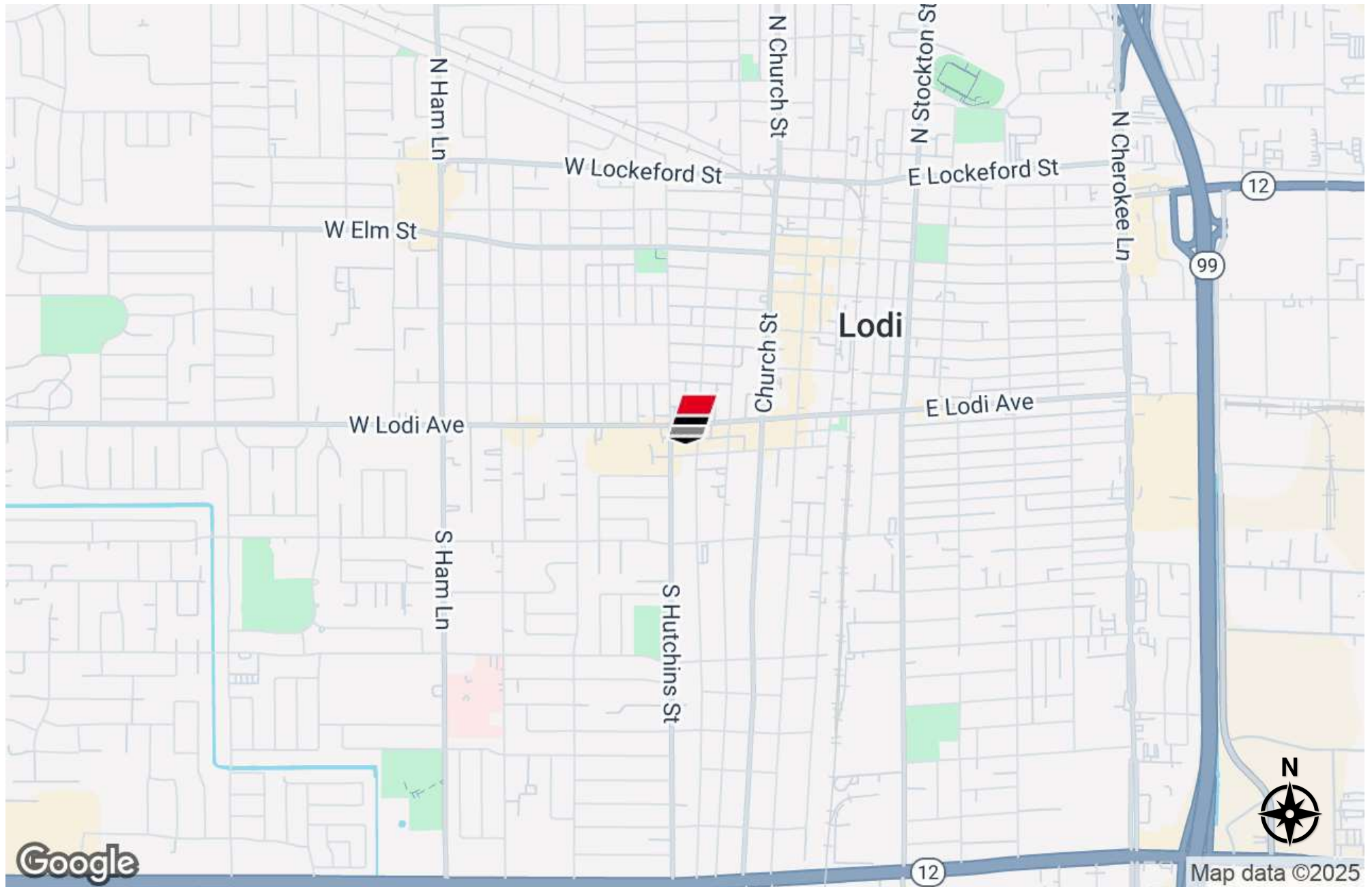
BEN RISHWAIN

209.461.6400 | ben@fcrei.com
CalDRE #01729449

ANDY LE

209.471.6358 | andy@fcrei.com
CA DRE #02110117

LOCATION MAP



BEN RISHWAIN

209.461.6400 | ben@fcrei.com
CalDRE #01729449

ANDY LE

209.471.6358 | andy@fcrei.com
CA DRE #02110117

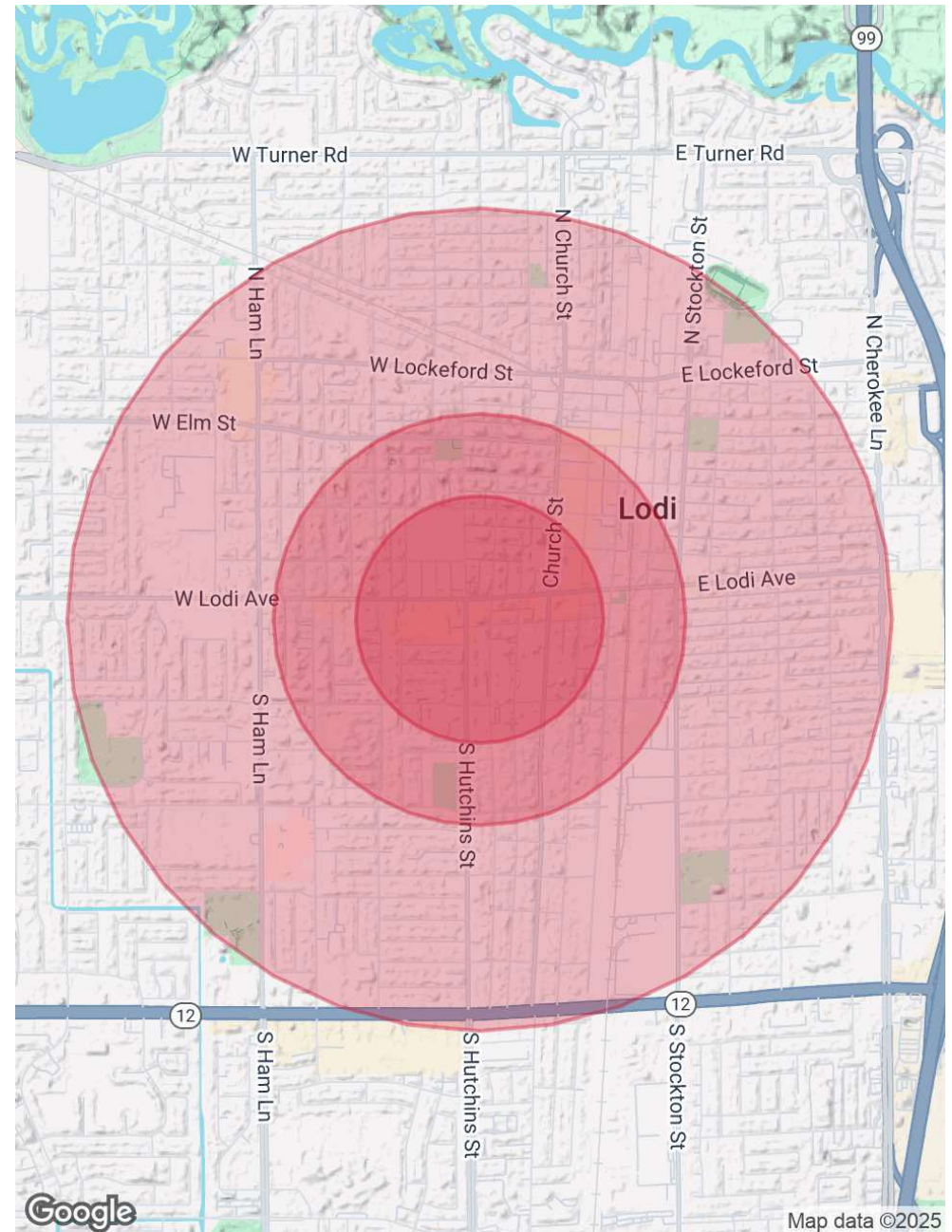
DEMOGRAPHICS MAP & REPORT

POPULATION	0.3 MILES	0.5 MILES	1 MILE
Total Population	1,719	4,542	23,801
Average Age	42	43	38
Average Age (Male)	40	41	36
Average Age (Female)	44	45	39

HOUSEHOLDS & INCOME	0.3 MILES	0.5 MILES	1 MILE
Total Households	724	1,878	8,366
# of Persons per HH	2.4	2.4	2.8
Average HH Income	\$103,724	\$106,729	\$85,799
Average House Value	\$477,598	\$493,304	\$454,358

RACE	0.3 MILES	0.5 MILES	1 MILE
Total Population - White	980	2,659	10,021
% White	57.0%	58.5%	42.1%
Total Population - Black	20	51	292
% Black	1.2%	1.1%	1.2%
Total Population - Asian	126	314	2,270
% Asian	7.3%	6.9%	9.5%
Total Population - Hawaiian	6	13	39
% Hawaiian	0.3%	0.3%	0.2%
Total Population - American Indian	20	49	337
% American Indian	1.2%	1.1%	1.4%
Total Population - Other	331	828	7,425
% Other	19.3%	18.2%	31.2%

Demographics data derived from AlphaMap



BEN RISHWAIN

209.461.6400 | ben@fcrei.com
CalDRE #01729449

ANDY LE

209.471.6358 | andy@fcrei.com
CA DRE #02110117