

FOR LEASE




 3631 N Morrison Rd. Muncie, IN



PROPERTY HIGHLIGHTS

- 39,625 SF medical office building
- 21,033 RSF medical space for lease
- Approximately 1 mile from Ball State University and 3 miles from IU Health Ball Memorial Hospital
- Covered patient drop-off
- Ample parking
- Well-maintained and professionally managed building
- Building Signage available for uses over 10,000 SF

 3631 N Morrison Rd.
Muncie, IN 47304

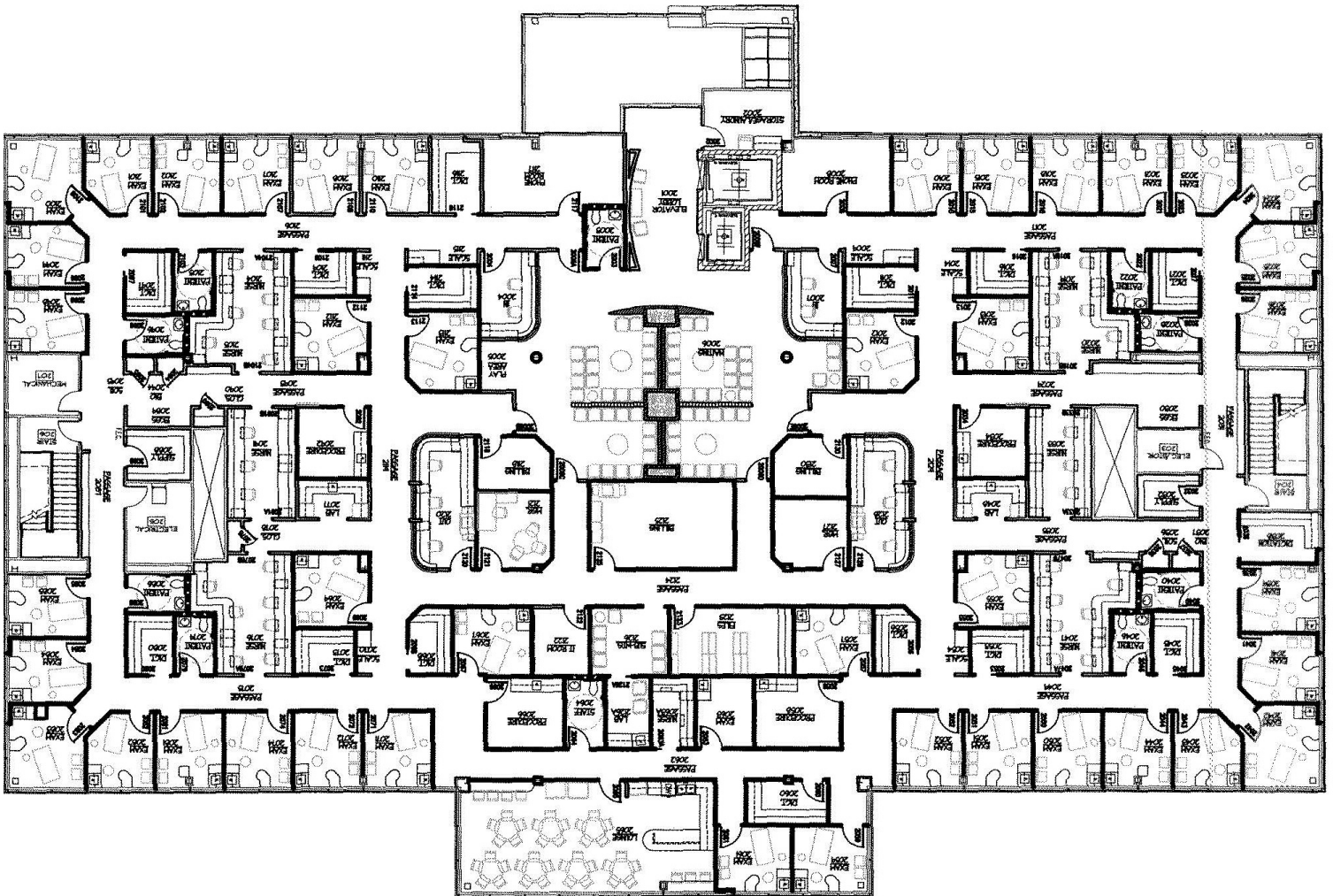
CONTACT

Bill McClamroch
Brokerage Associate
317-919-2992
bmcclamroch@cciin.com

Cornerstone Companies, Inc.
8902 N Meridian Street, Suite 205
Indianapolis, IN 46260

FLOOR PLAN

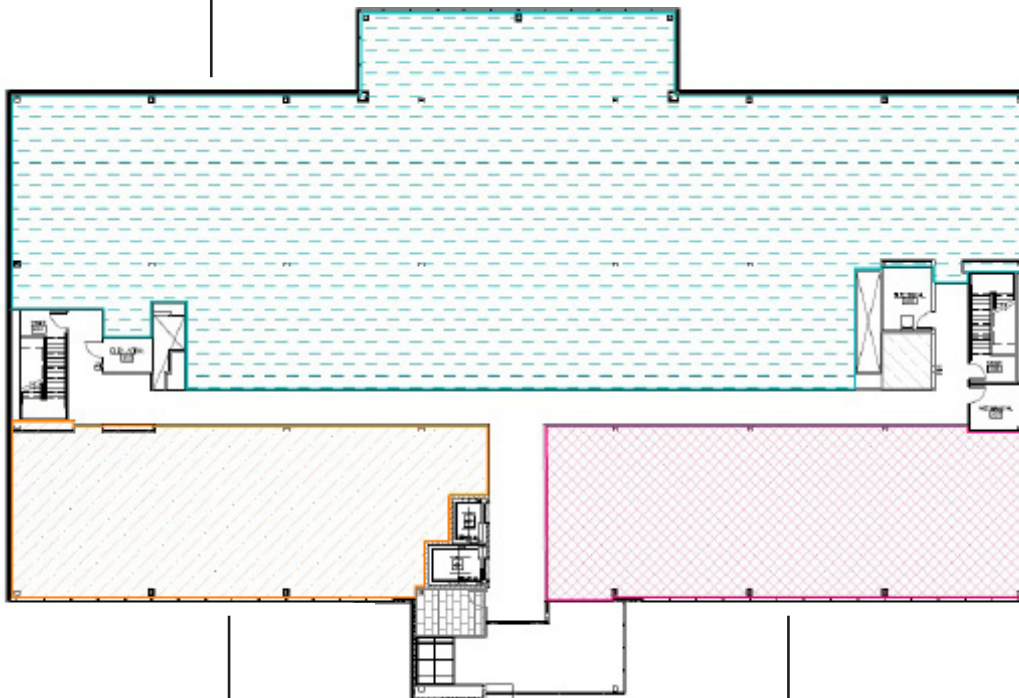
Existing 2nd Floor Layout



FLOOR PLAN

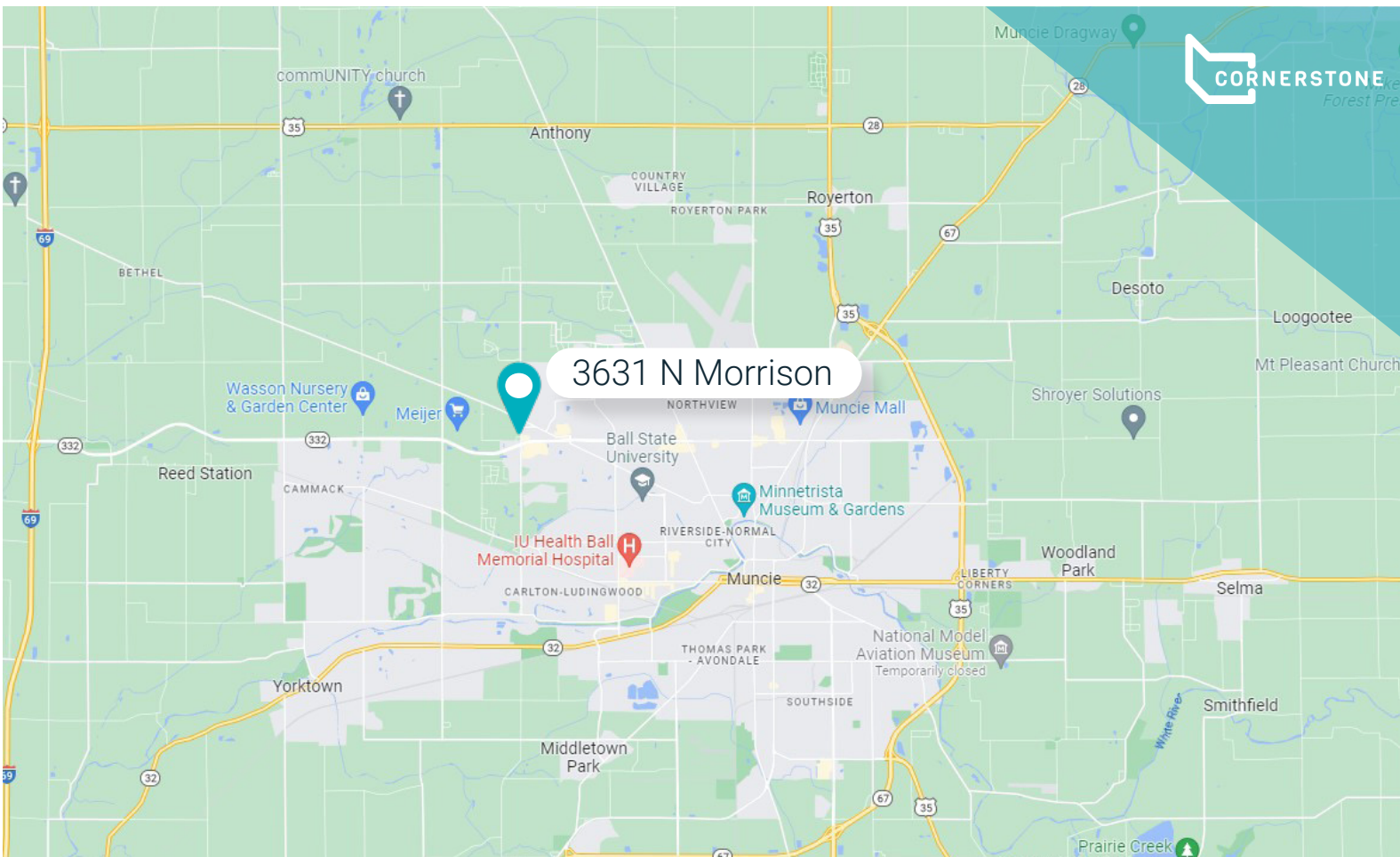
Proposed Multi-Tenant Layout

Suite 230:
13,633 RSF



Suite 220:
3,578 RSF

Suite 210:
3,822 RSF



DEMOGRAPHICS



73,984

Population



29,597

Households



45,324

Median Household Income



27,184

Per Capita Income



33

Median Age



CONTACT

Bill McClamroch

Brokerage Associate

317-919-2992

bmcclamroch@cciin.com

Cornerstone Companies, Inc.
8902 N Meridian Street, Suite 205
Indianapolis, IN 46260