



212 Gateway Blvd

212 Gateway Blvd, Westville, NJ 08093

RE/MAX



Justin Kelly

RE/MAX Connection
140 Bridgeton Pike, Mantua, NJ 08051
jkellyrealty@comcast.net
(609) 444-9704



212 Gateway Blvd

\$3,500/month - 3,200sqft

Elevate your business with this exceptional 3,200 square-foot commercial space, brimming with possibilities. Nestled in a prime location, this versatile property offers the convenience you've been seeking. With abundant parking and a central position, it provides easy access to major travel routes such as Routes 130, 295, 76, 676 and 42, as well as seamless connections to the Walt Whitman, Ben Franklin, and Commodore Barry Bridges. Whether your destination is Philadelphia or Delaware, getting there has never been easier.

- • High Traffic Count / High Exposure
- • Direct Access to Routes 130, 295, 76, 676 and 42, as well as seamless connections to the Walt Whitman, Ben Franklin, and Commodore Barry Bridges
- • Fully Renovated (2022-2023)
- • New Parking Lot
- • Flex Use

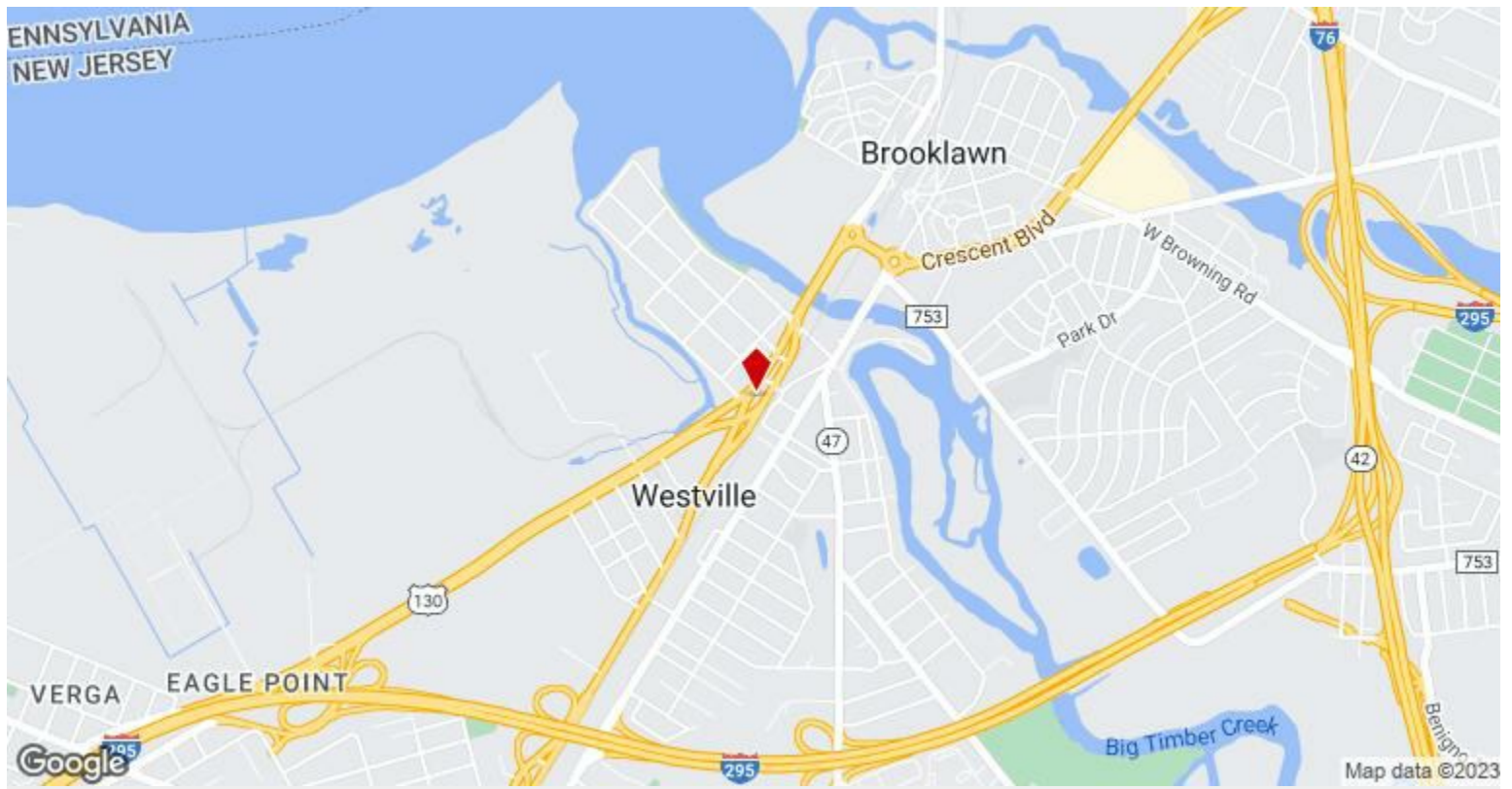


Rental Rate:	\$3,500/month
Property Type:	Office
Property Subtype:	Office/Residential
Building Class:	C
Rentable Building Area:	3,200 SF
Year Built:	1929
Walk Score ®:	50 (Somewhat Walkable)
Rental Rate Mo:	Upon Request

1st Floor

Space Available	3,200 SF
Rental Rate	\$3,500/month
Date Available	November 01, 2023
Service Type	Negotiable
Space Type	Relet
Space Use	Office
Lease Term	24 Years

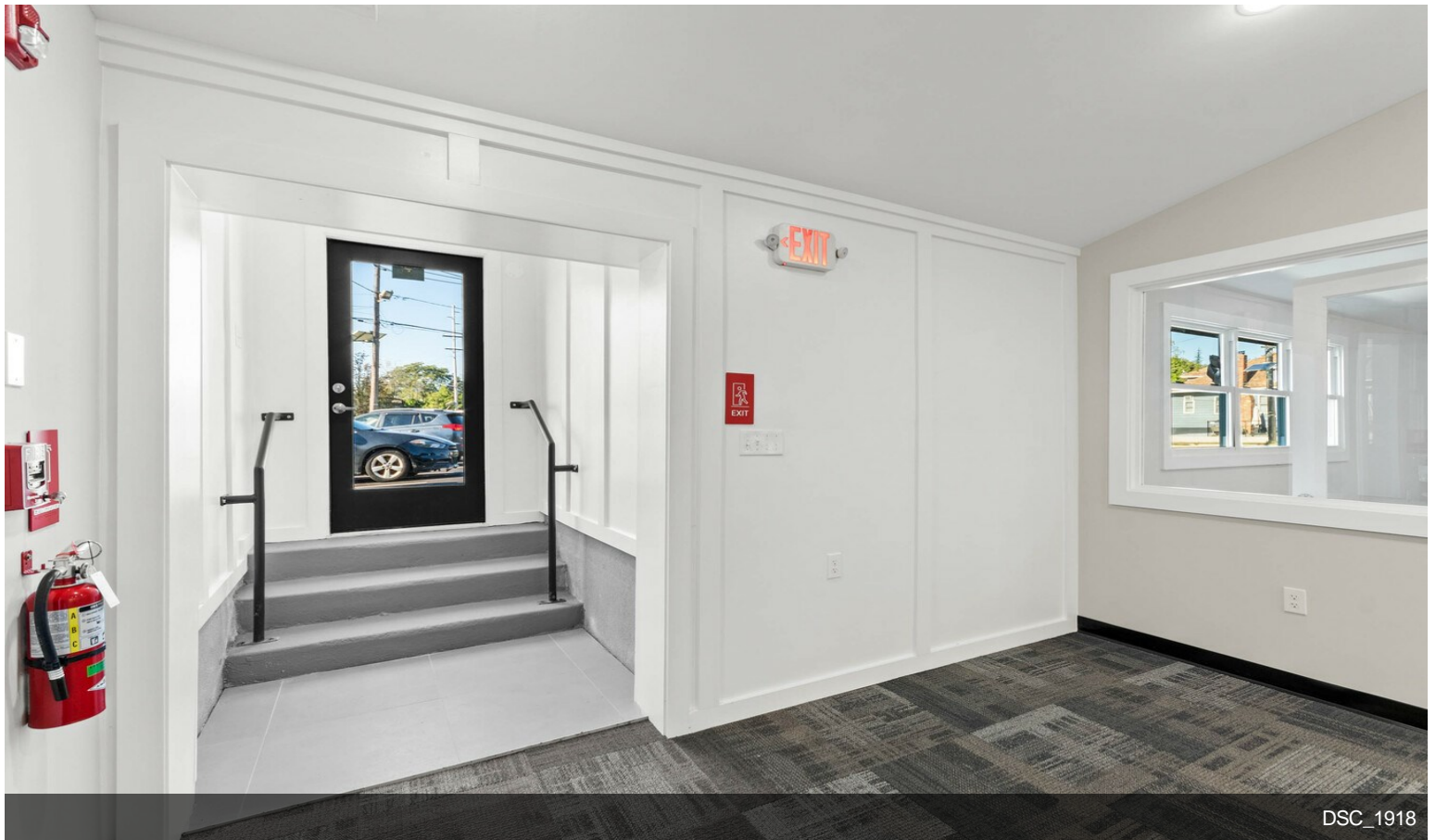
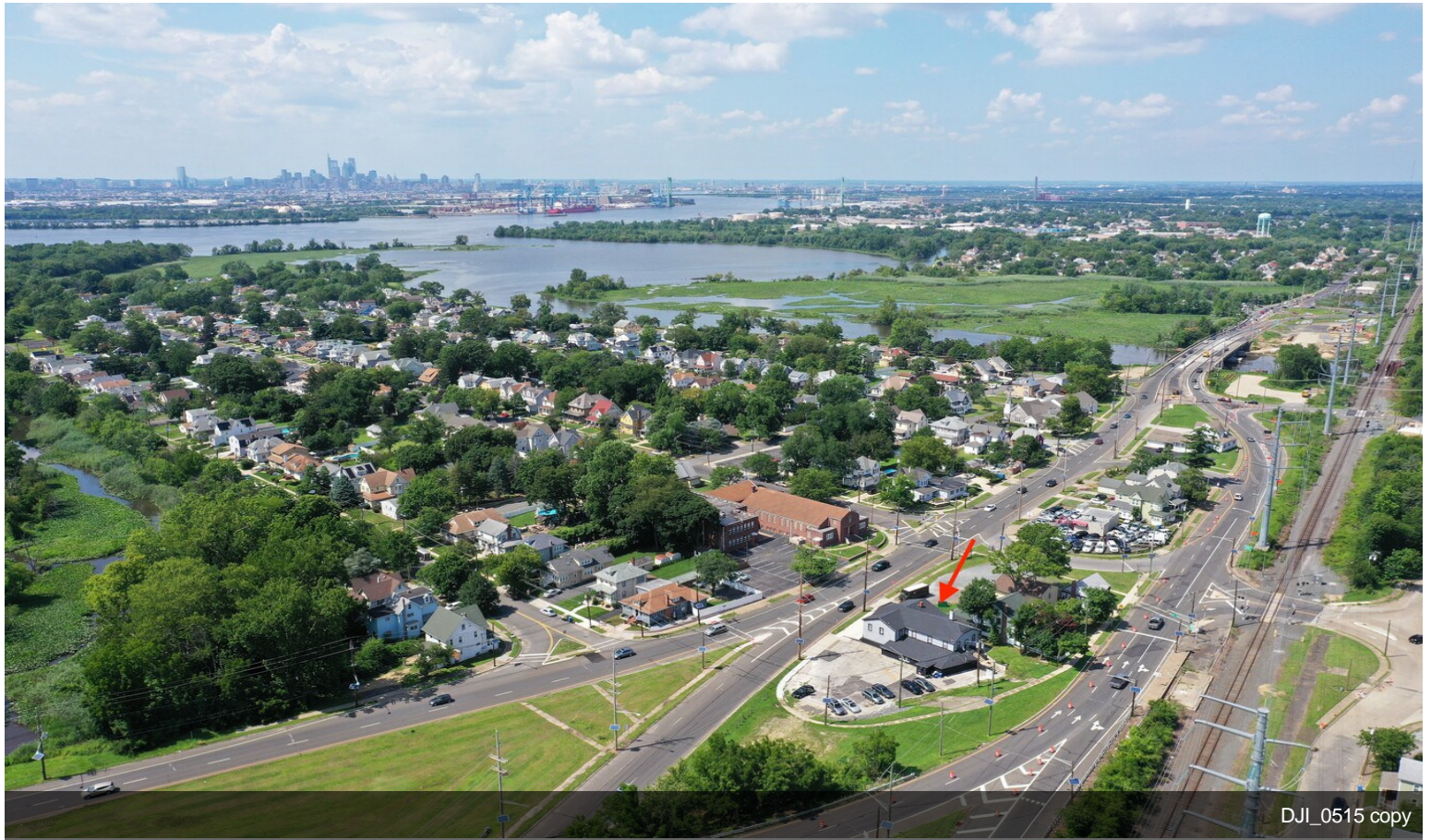
Elevate your business with this exceptional 3,200 square-foot commercial space, brimming with possibilities. Nestled in a prime location, this versatile property offers the convenience you've been seeking. With abundant parking and a central position, it provides easy access to major travel routes such as Routes 130, 295, 76, 676 and 42, as well as seamless connections to the Walt Whitman, Ben Franklin, and Commodore Barry Bridges. Whether your destination is Philadelphia or Delaware, getting there has never been easier. This spacious gem invites you to unleash your creativity. Tailor it to your specific needs, whether you envision a dynamic office space, a state-of-the-art medical facility, a vibrant daycare center, a flexible workspace, or a stylish hair salon - the possibilities are endless. Need a customized setup? Our accommodating landlord is eager to collaborate with you, ensuring your vision becomes a reality. Furthermore, the location boasts impressive traffic flow, with approximately 20,000 vehicles passing by daily, as reported in the 2020 traffic counts (Station ID 7-4-234). Don't miss the opportunity to make this high-visibility location the foundation of your thriving enterprise. Discover the limitless potential that awaits in this exceptional commercial space.



212 Gateway Blvd, Westville, NJ 08093

Elevate your business with this exceptional 3,200 square-foot commercial space, brimming with possibilities. Nestled in a prime location, this versatile property offers the convenience you've been seeking. With abundant parking and a central position, it provides easy access to major travel routes such as Routes 130, 295, 76, 676 and 42, as well as seamless connections to the Walt Whitman, Ben Franklin, and Commodore Barry Bridges. Whether your destination is Philadelphia or Delaware, getting there has never been easier. This spacious gem invites you to unleash your creativity. Tailor it to your specific needs, whether you envision a dynamic office space, a state-of-the-art medical facility, a vibrant daycare center, a flexible workspace, or a stylish hair salon - the possibilities are endless. Need a customized setup? Our accommodating landlord is eager to collaborate with you, ensuring your vision becomes a reality. Furthermore, the location boasts impressive traffic flow, with approximately 20,000 vehicles passing by daily, as reported in the 2020 traffic counts (Station ID 7-4-234). Don't miss the opportunity to make this high-visibility location the foundation of your thriving enterprise. Discover the limitless potential that awaits in this exceptional commercial space.

Property Photos



Property Photos

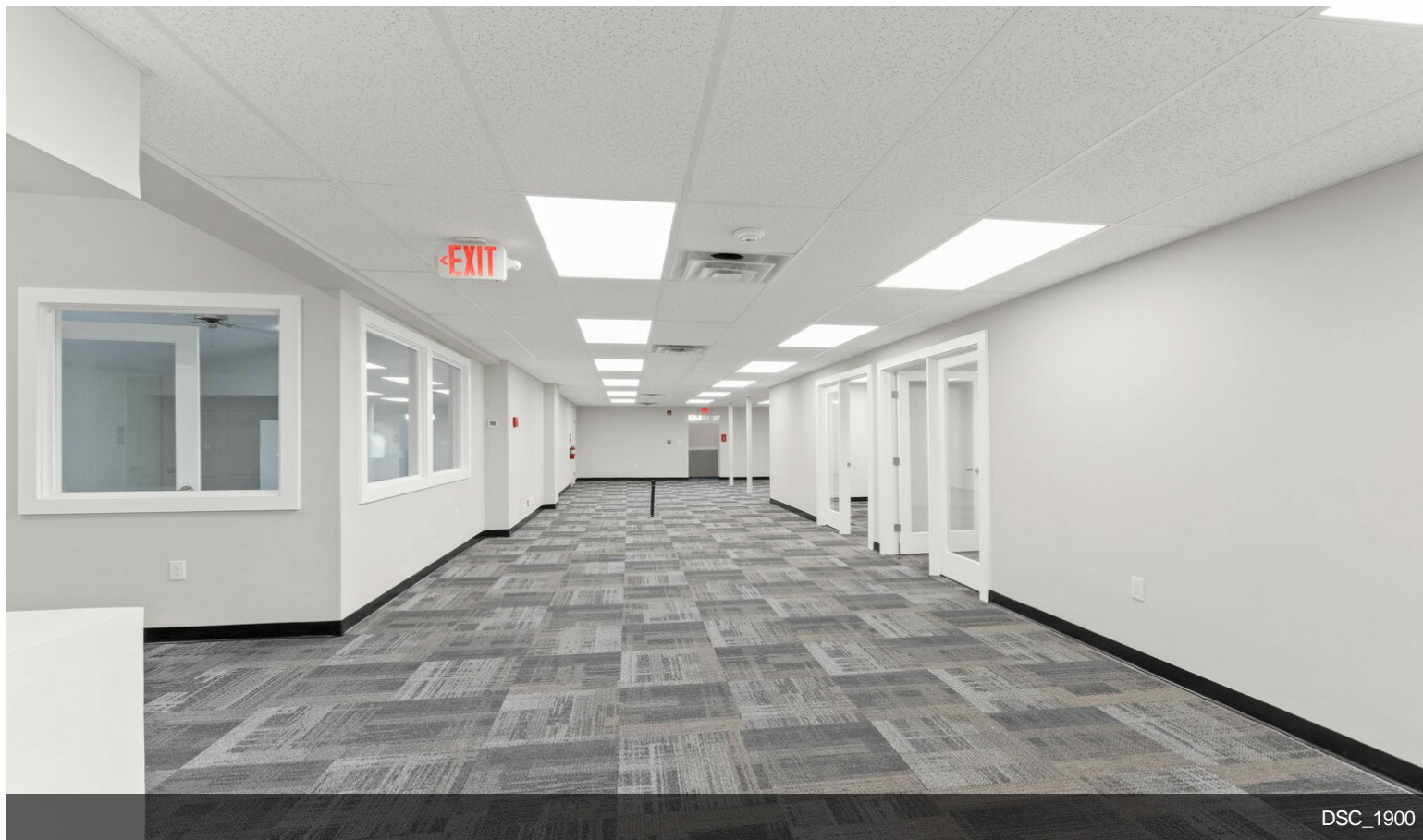
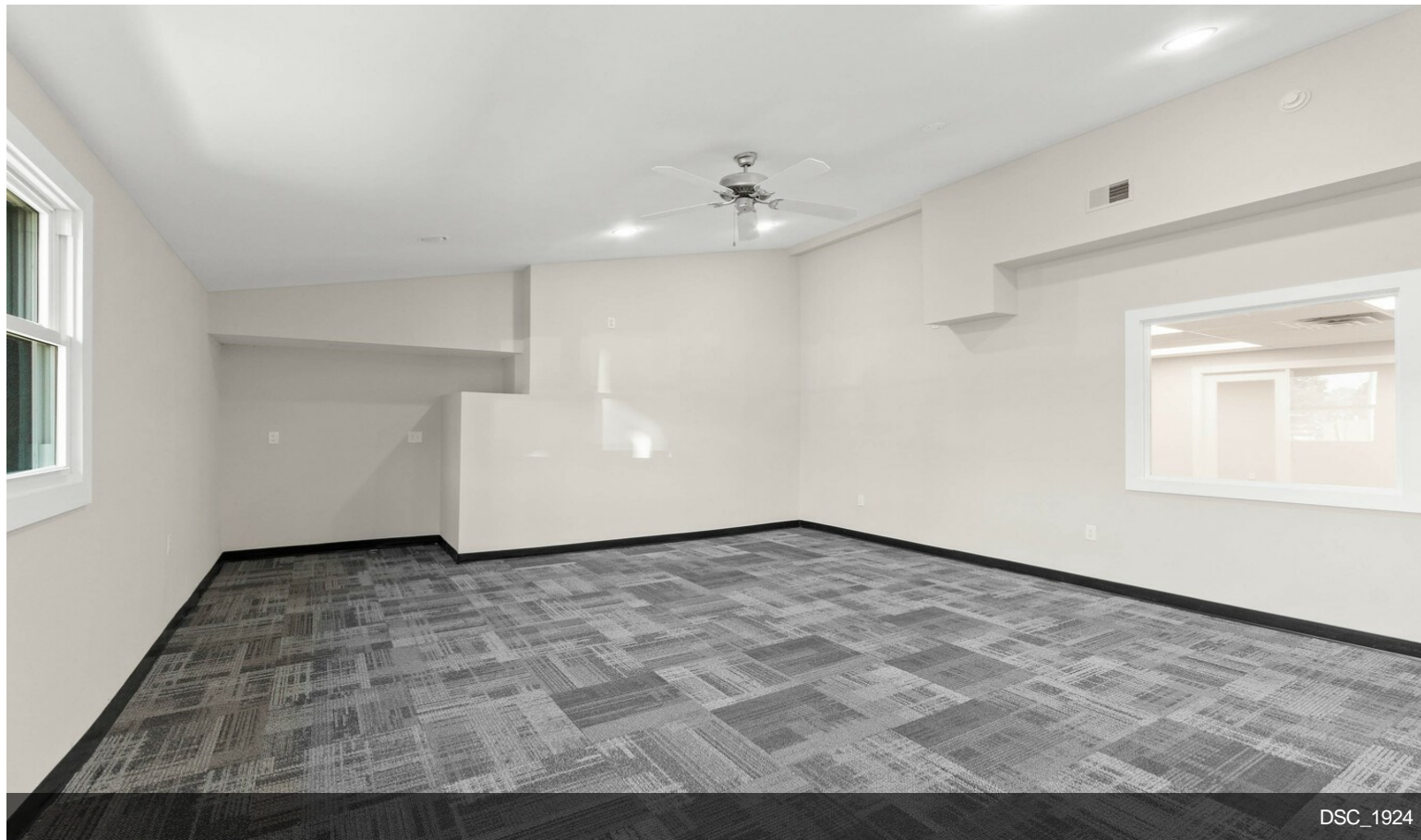


DSC_1928

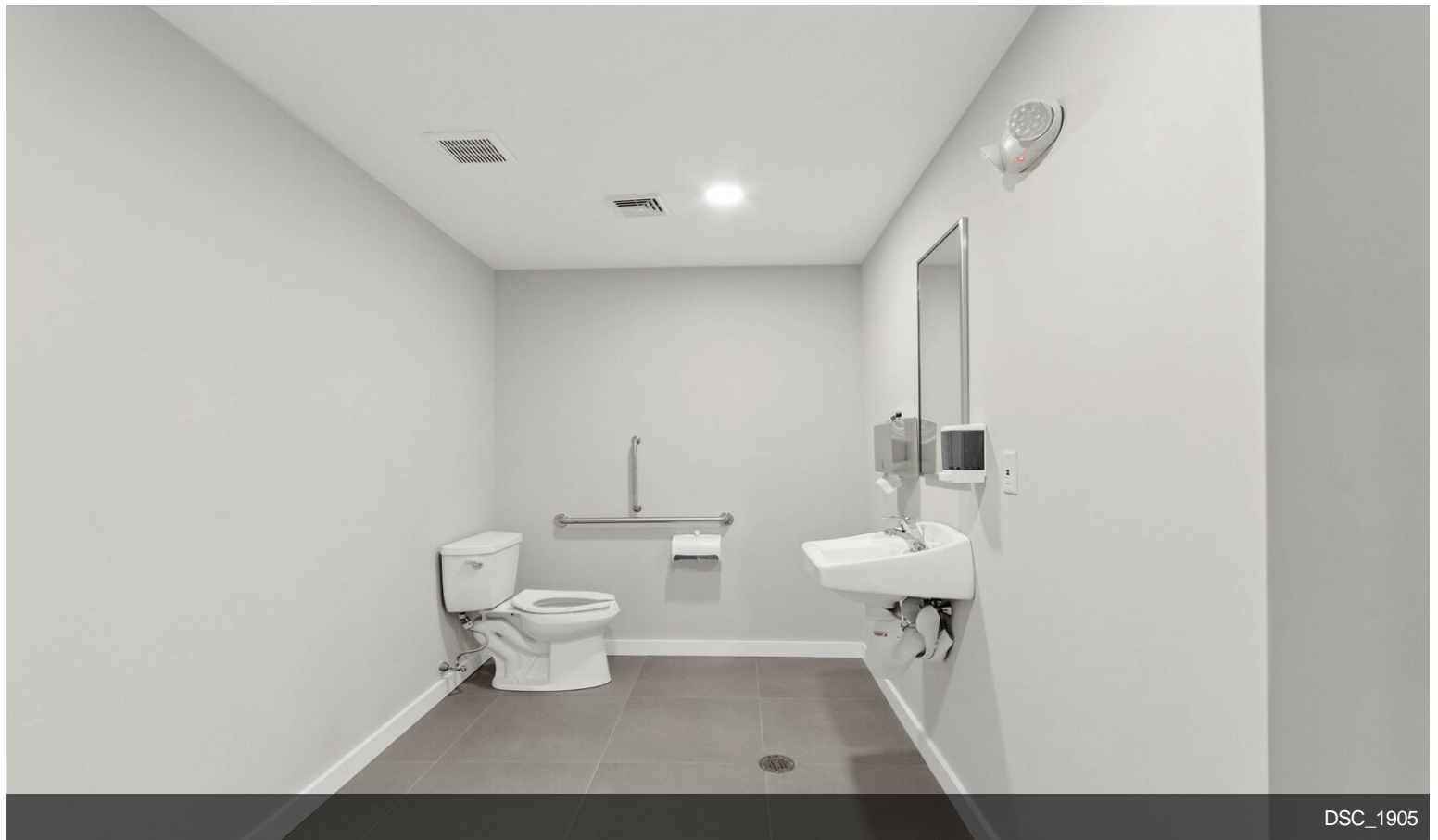
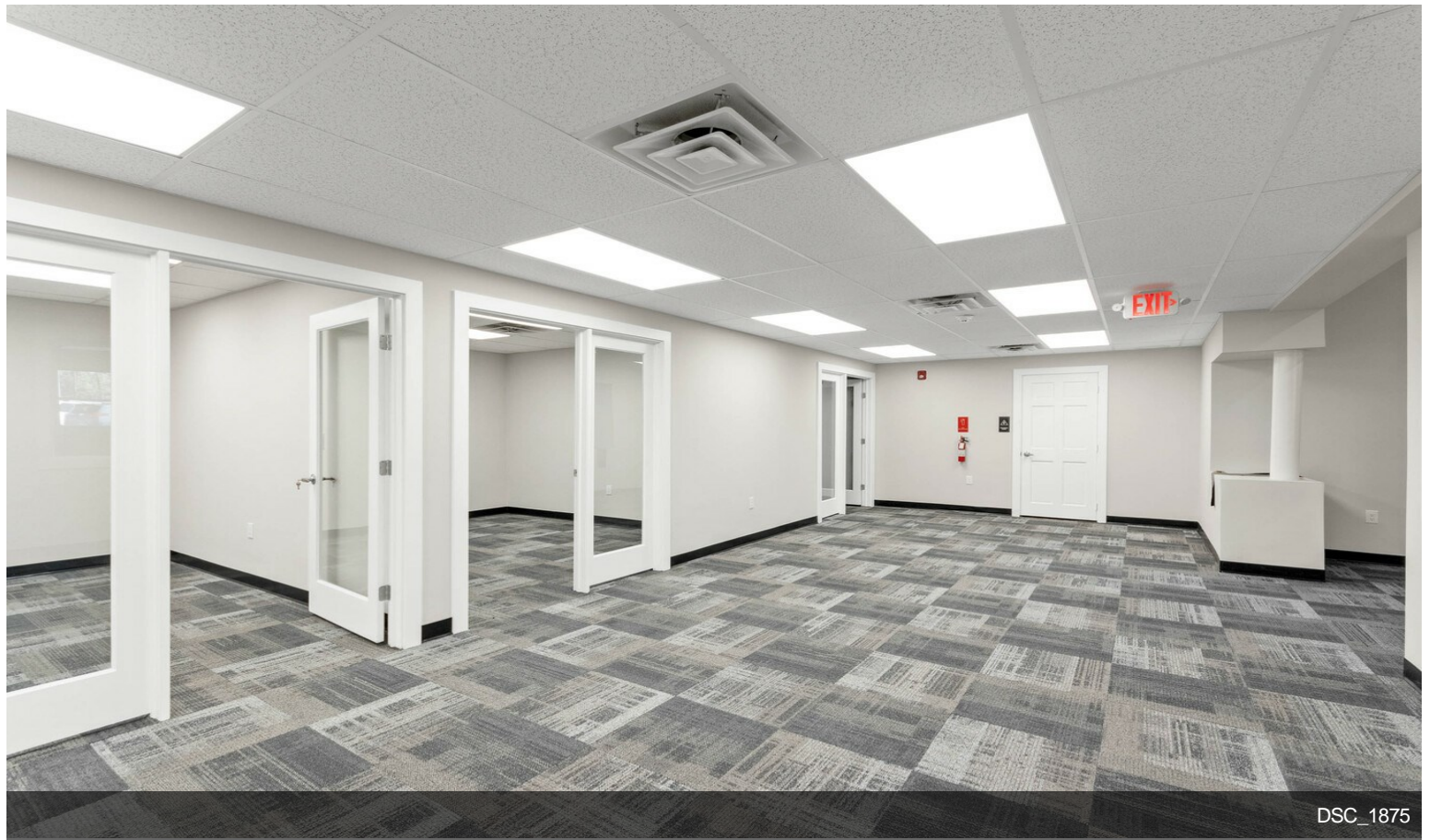


DSC_1920

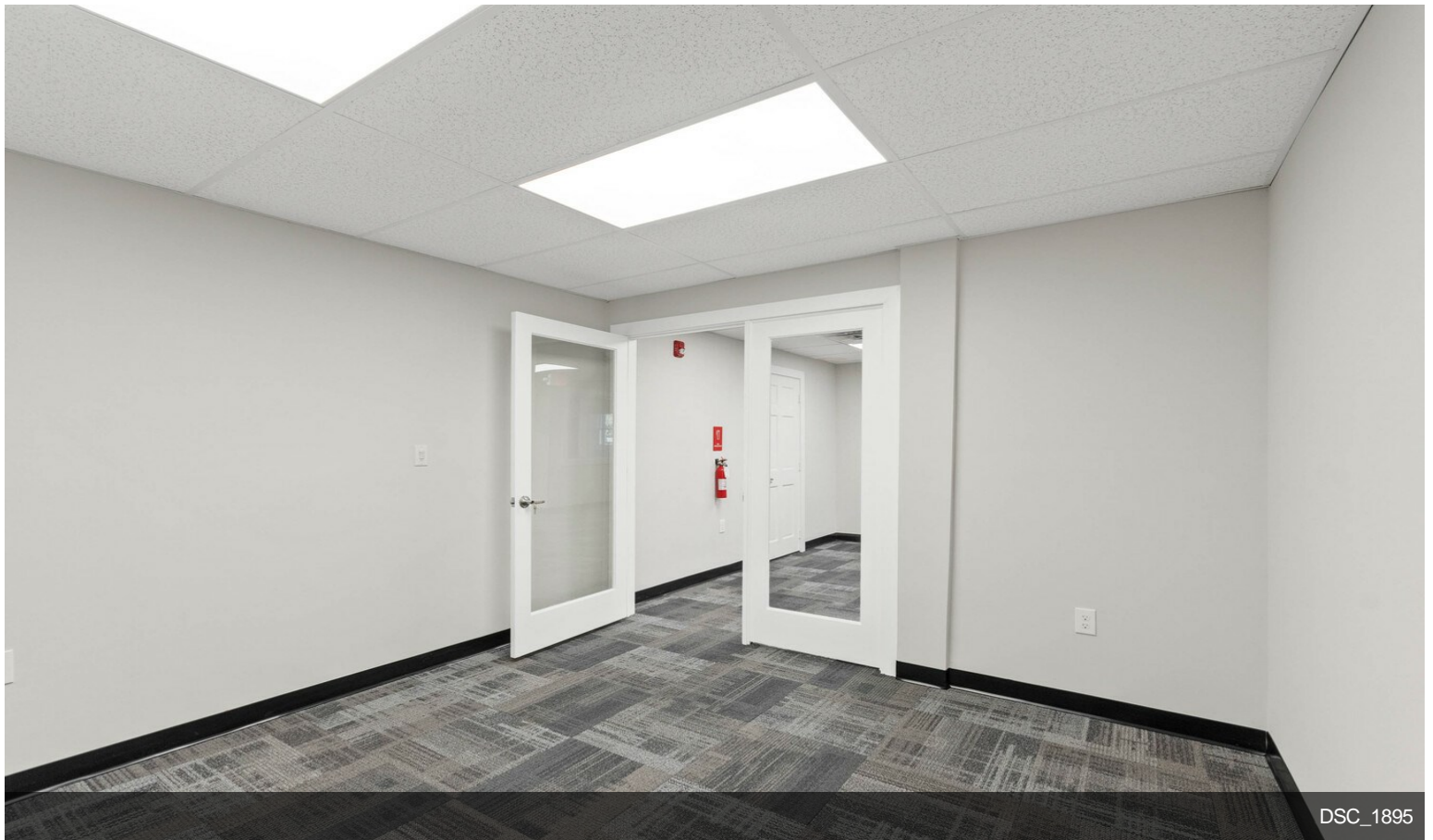
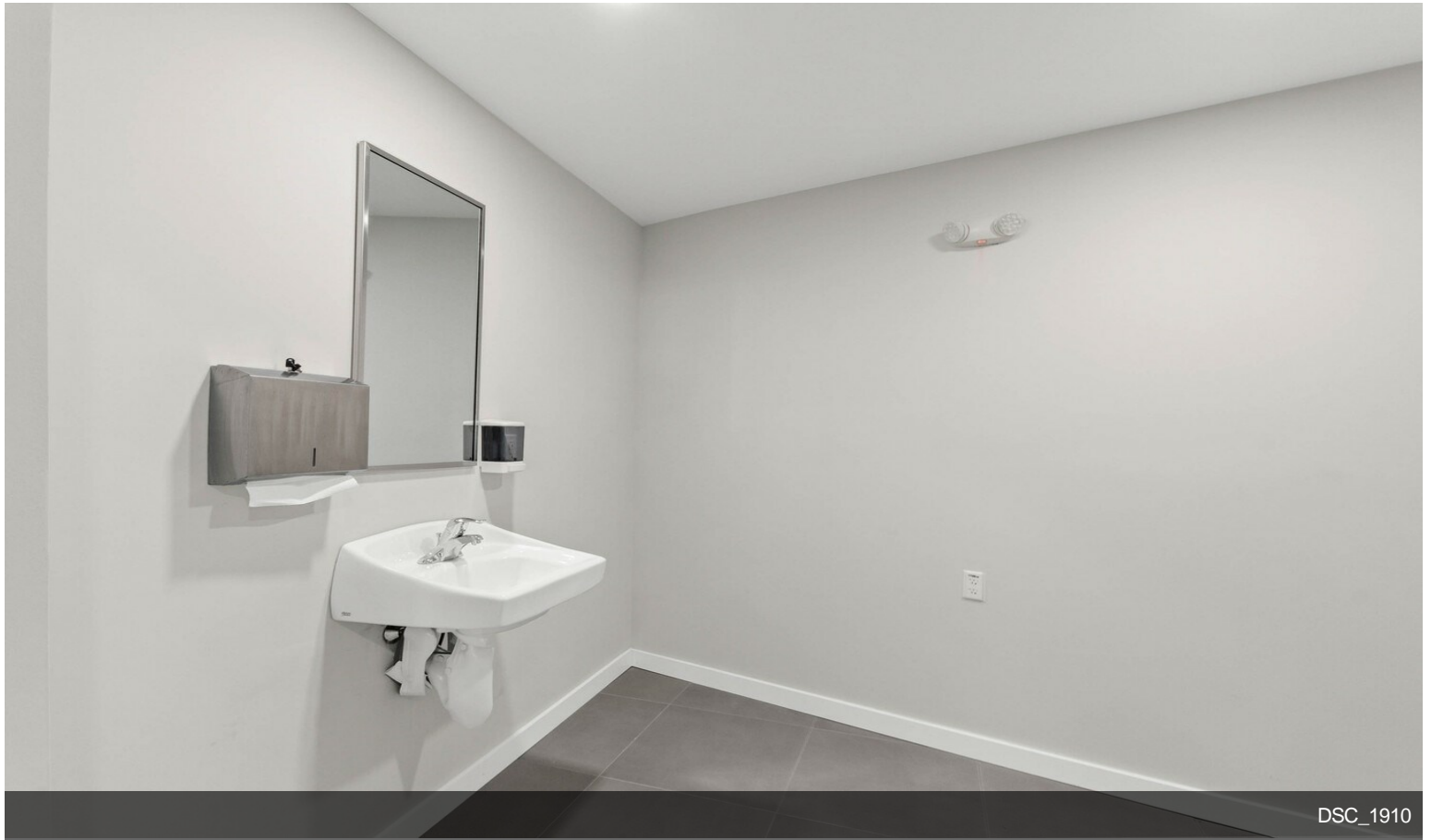
Property Photos



Property Photos



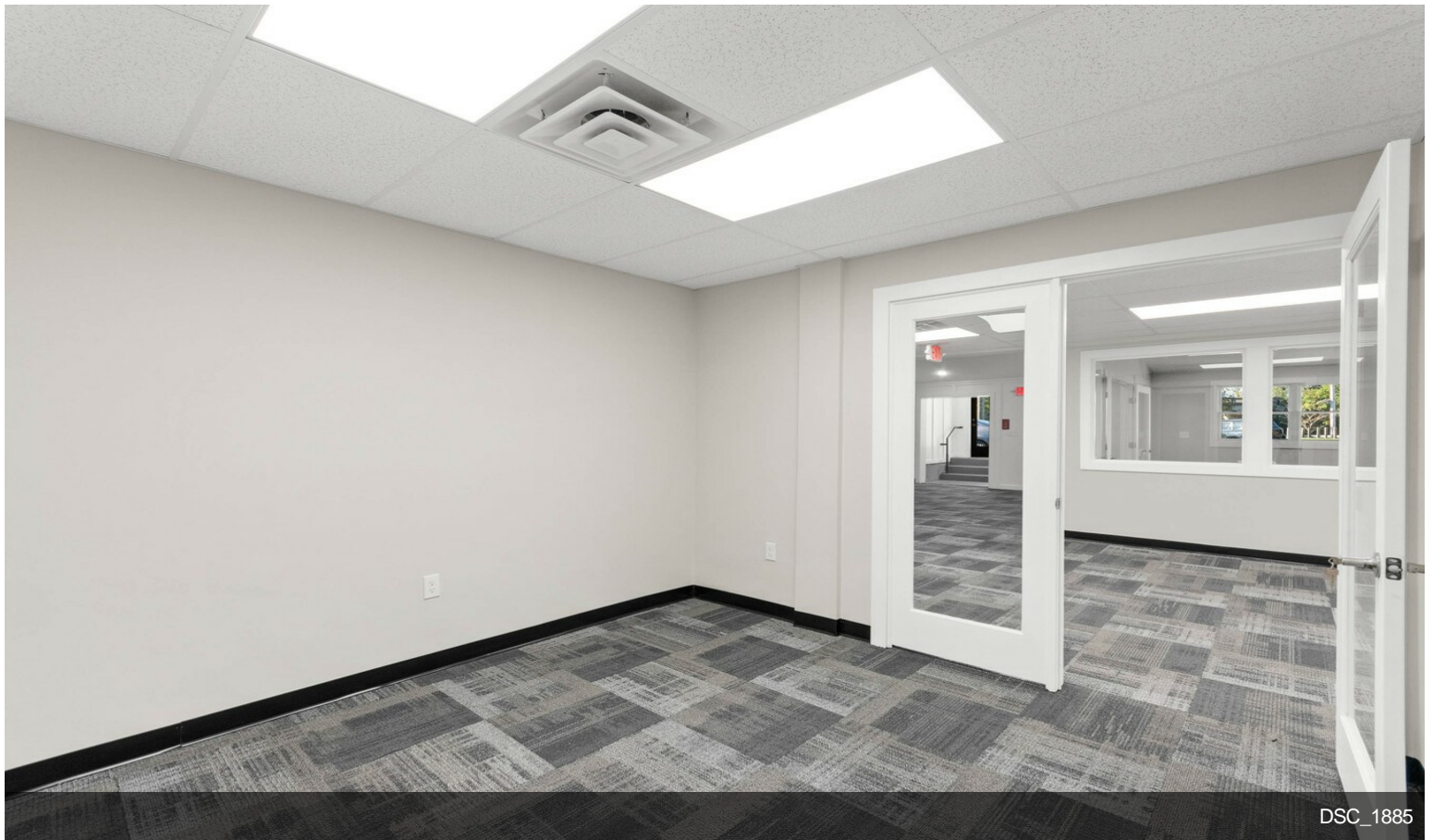
Property Photos



Property Photos

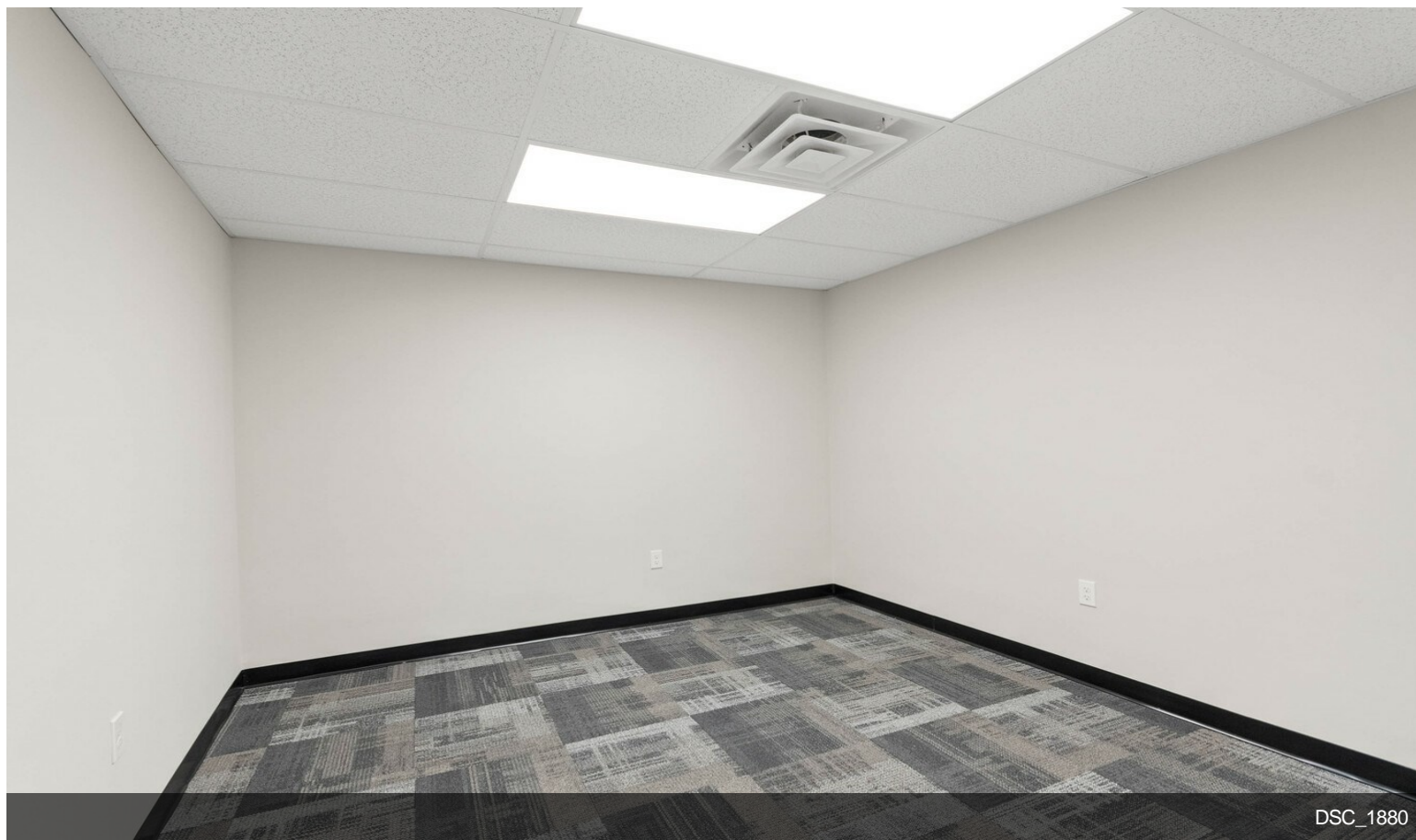


DSC_1890



DSC_1885

Property Photos

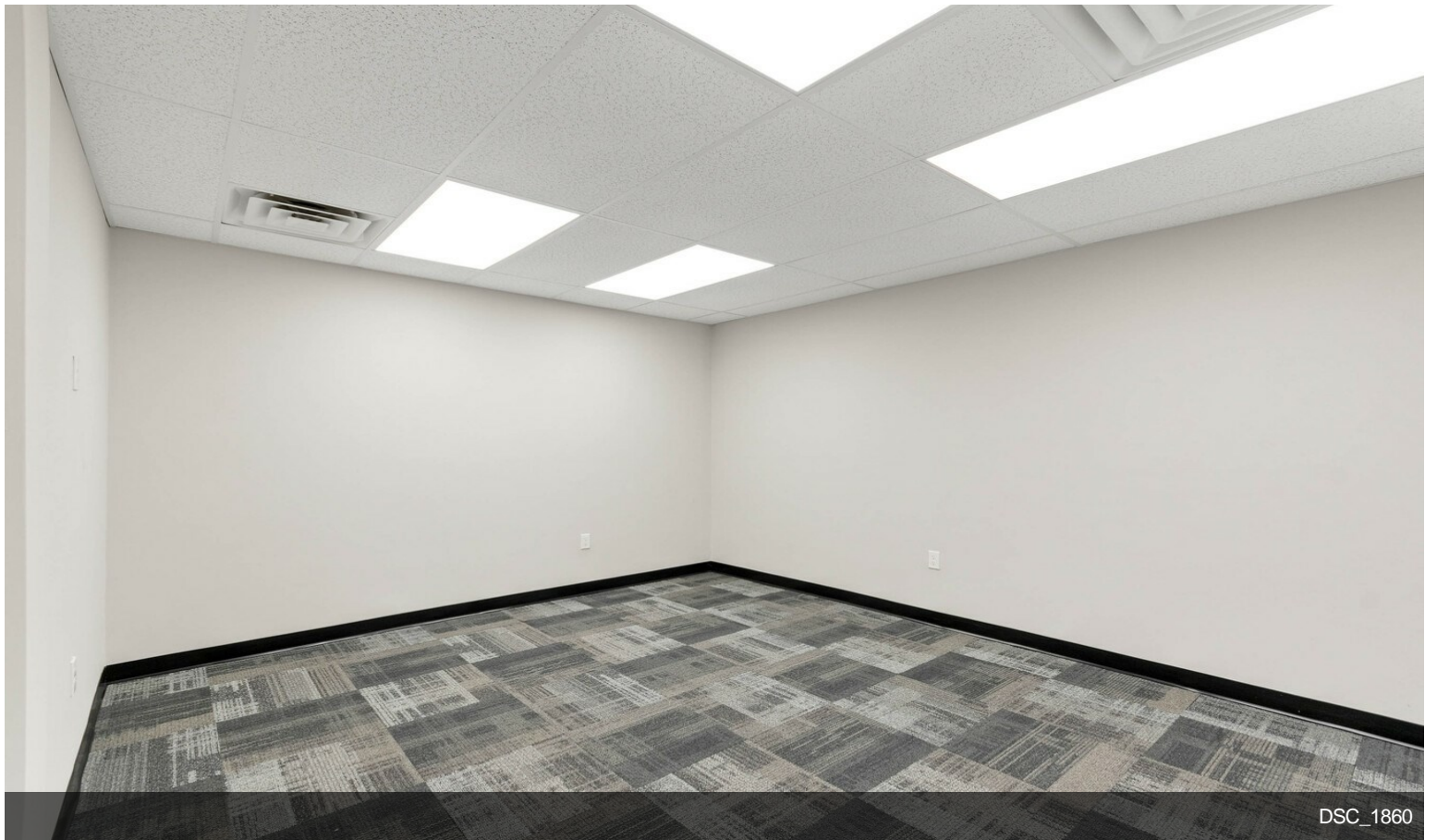
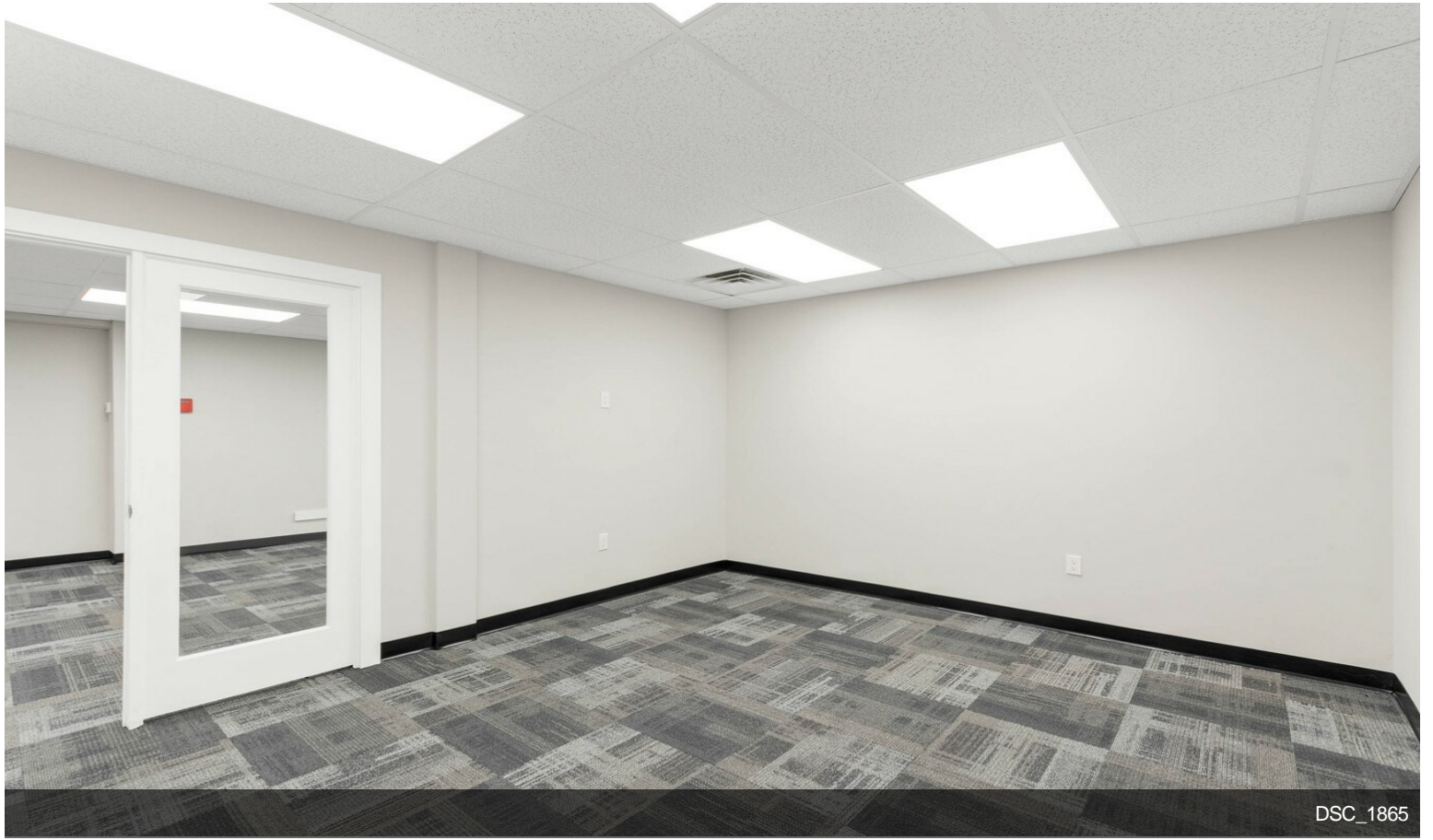


DSC_1880

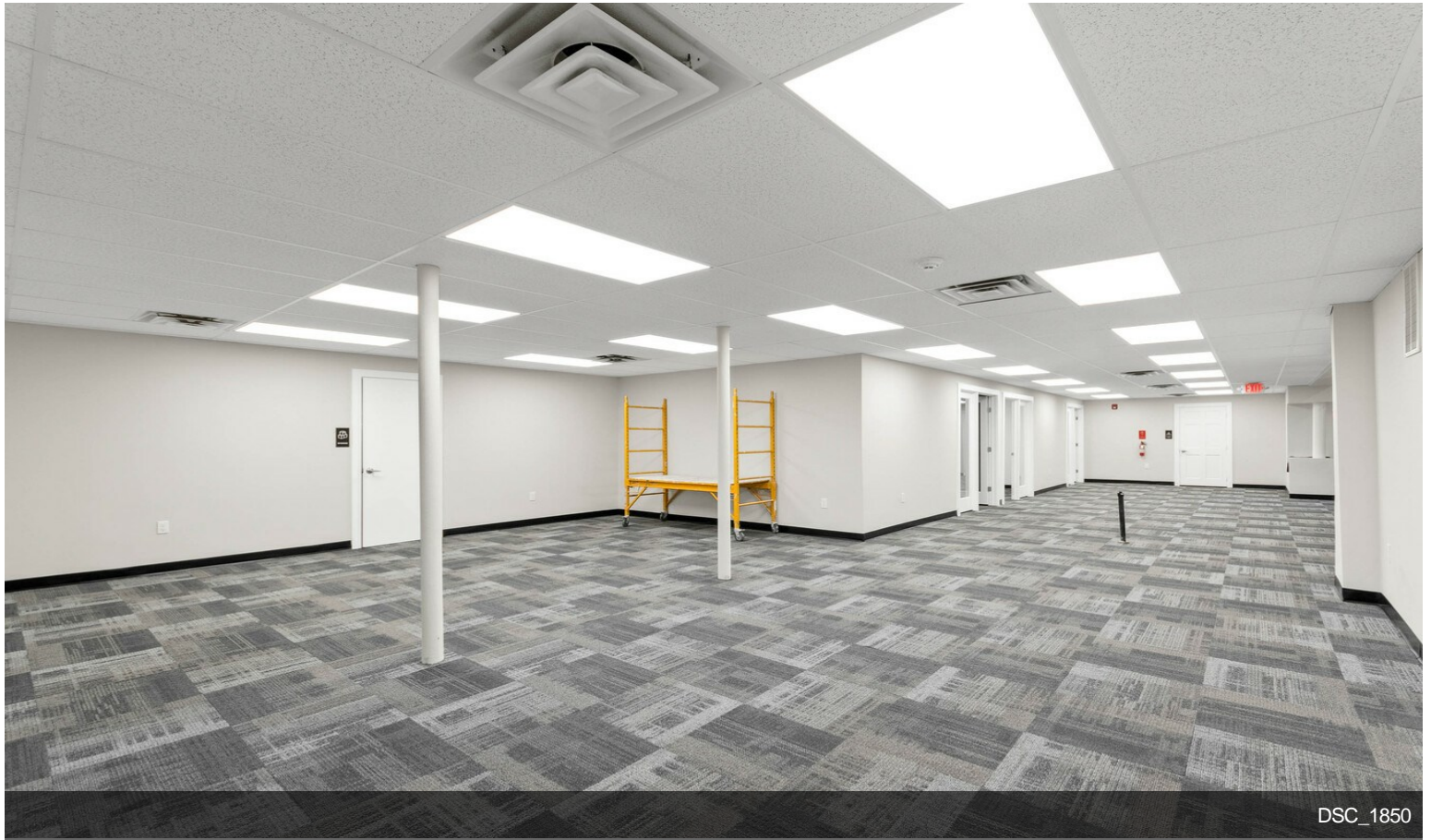


DSC_1870

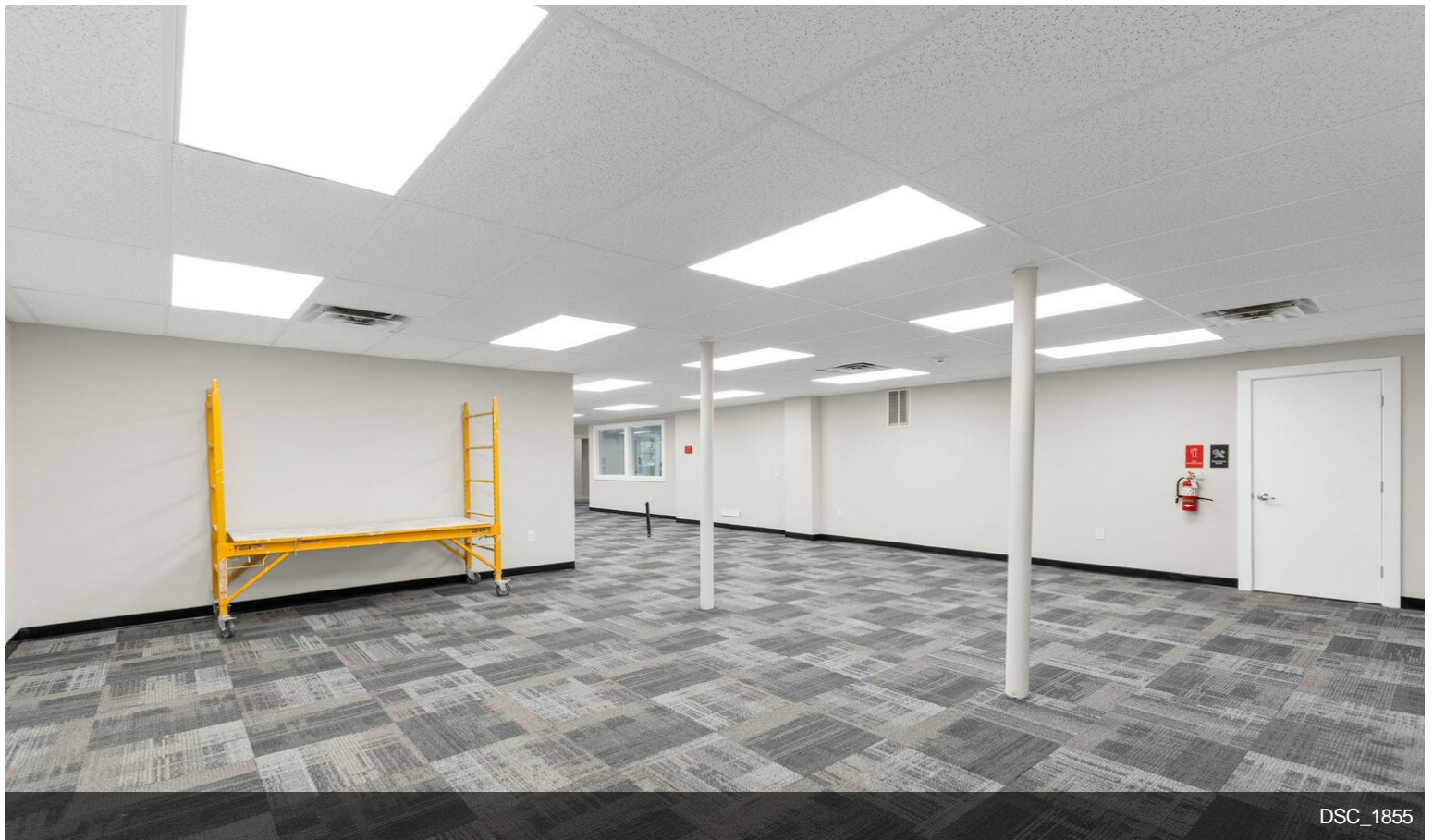
Property Photos



Property Photos



DSC_1850



DSC_1855

Property Photos



DSC_1846