

# HIGH VISIBILITY GENERAL COMMERCIAL PARCEL

60th St. S. & Southeast Blvd., SE/C, Wichita, KS 67037



**SALE PRICE:** \$155,000.00

**LOT SIZE:** 0.97 Acres

**ZONING:** General Commercial

**2024 TAXES:** Generals: \$443.51

## PROPERTY HIGHLIGHTS

- Excellent visibility on K-15 / Southeast Blvd.
- Access from either 55th St. (north of property) or via Commerce Drive off Patriot Ave. (southeast of property)
- General commercial zoning allows for a wide range of commercial and industrial uses.

DEMOGRAPHICS	1 MILE	3 MILES	5 MILES
<b>POPULATION</b>	4,183	32,592	71,929
<b>AVG. HH INCOME</b>	\$96,015	\$86,440	\$81,356
<b>MEDIAN AGE</b>	37	39	38
TRAFFIC COUNTS			
<b>ALONG K-15</b>	22,391 VPD		



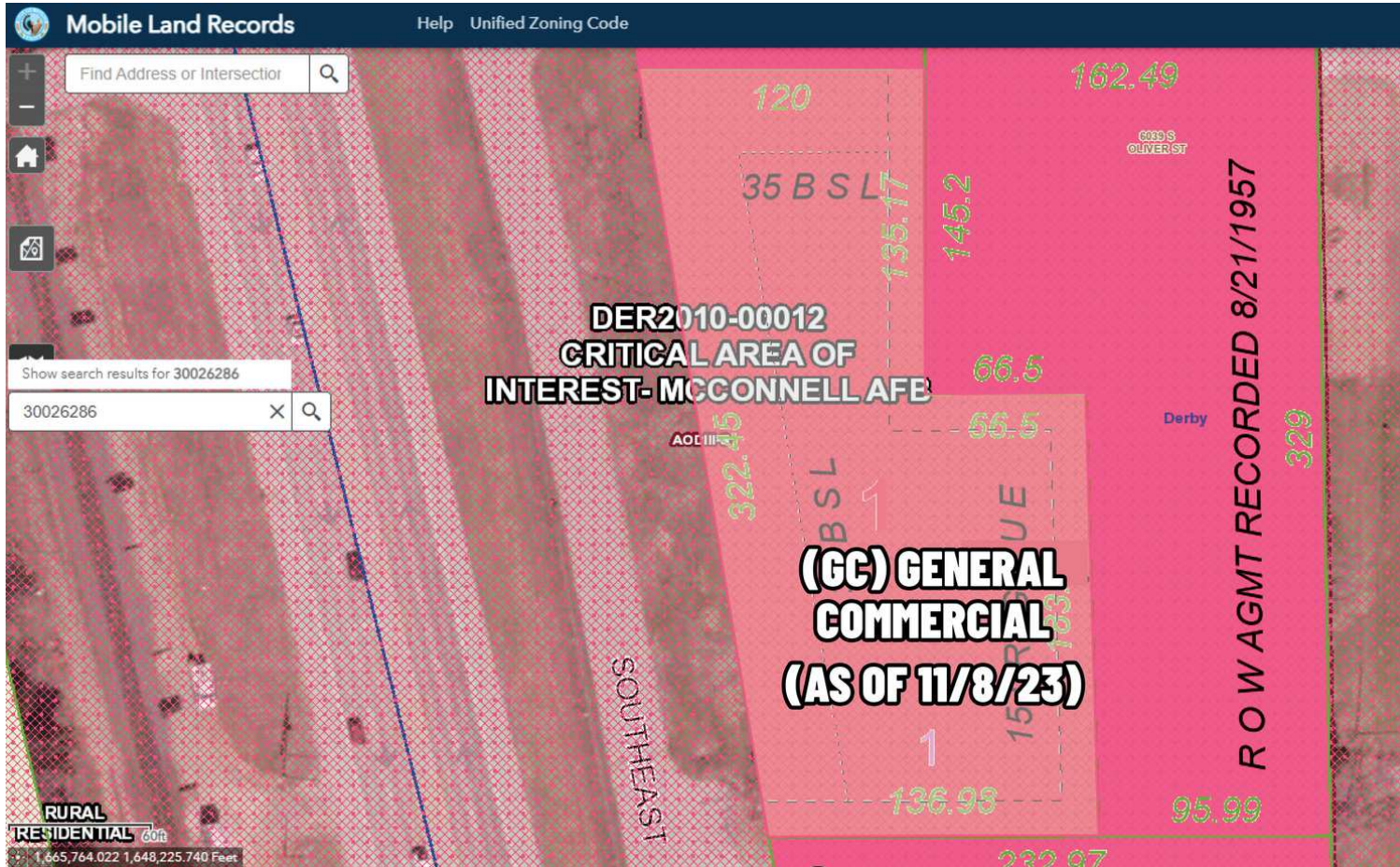
Offered exclusively by: Ben Gartner, CCIM | 316-292-3967 | bgartner@weigand.com





# HIGH VISIBILITY GENERAL COMMERCIAL PARCEL

60th St. S. & Southeast Blvd., SE/C, Wichita, KS 67037



Zoning changed from Limited Commercial (LC) to General Commercial (GC) on November 8th, 2023.

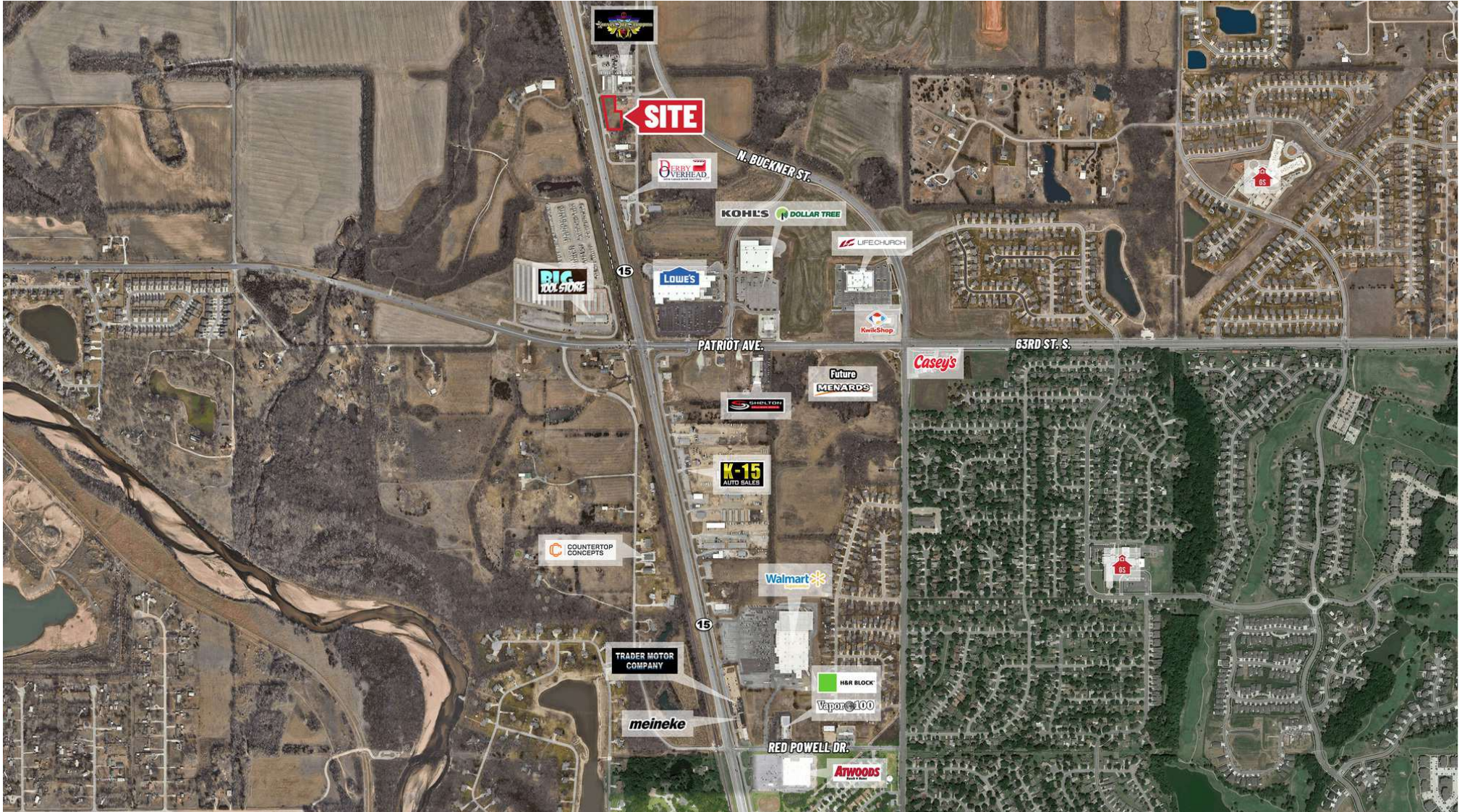


Offered exclusively by: Ben Gartner, CCIM | 316-292-3967 | bgartner@weigand.com



# HIGH VISIBILITY GENERAL COMMERCIAL PARCEL

60th St. S. & Southeast Blvd., SE/C, Wichita, KS 67037



Offered exclusively by: Ben Gartner, CCIM | 316-292-3967 | [bgartner@weigand.com](mailto:bgartner@weigand.com)

J.P. Weigand & Sons, Inc. Commercial | 150 N. Market Street, Wichita, KS 67202 | [WeigandCommercial.com](http://WeigandCommercial.com)