



1620 W Mineral King Ave - Suites C/D | Visalia, CA

Property For Lease

1005 N Demaree Street
Visalia, California 93291
O | 559.754.3020
F | 559.429.4016
www.mdgre.com

GRAHAM | **& ASSOCIATES**

to learn more, visit: www.mdgre.com

Lindsey TeVeide
Lic# 01990525
www.mdgre.com

1620 W Mineral King Ave | Visalia, CA

GRAHAM | & ASSOCIATES

Property For Lease

PROPERTY DETAILS

Address 1620 W Mineral King Ave - Suites C/D | Visalia, CA

Square Feet Available 2,350 +/- Sq. Ft.

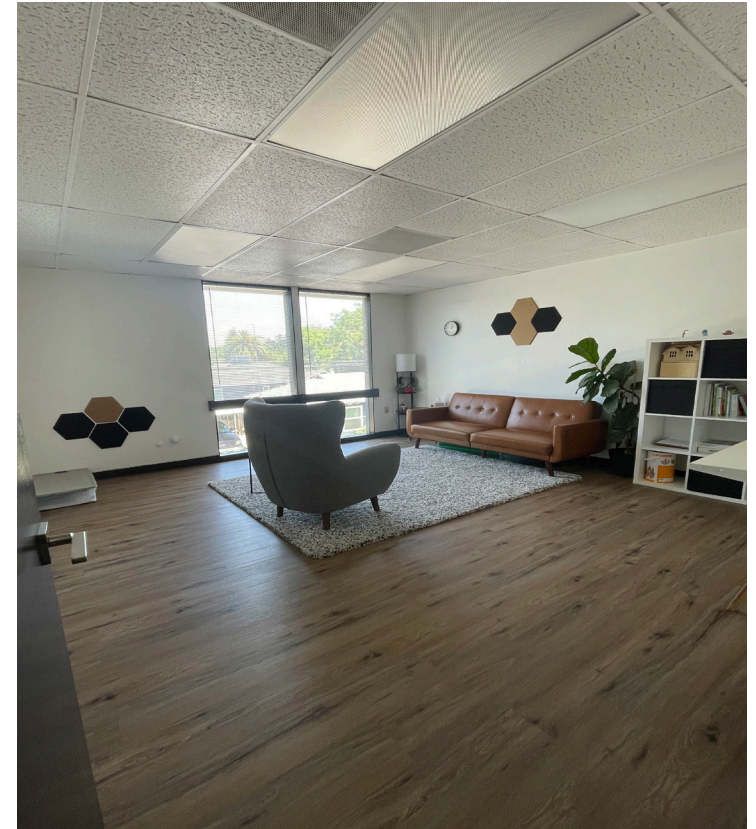
Zoning PA

Lease Rate \$1.06 Per Sq. Ft. | \$2,500.00 Per Month

Lease Type Gross

Additional Comments:

Second story office space sublease available in NW Visalia on Mineral King Ave. The space offers two separate entrances, good size reception area, large private offices/rooms throughout and private restroom. Please call for details.



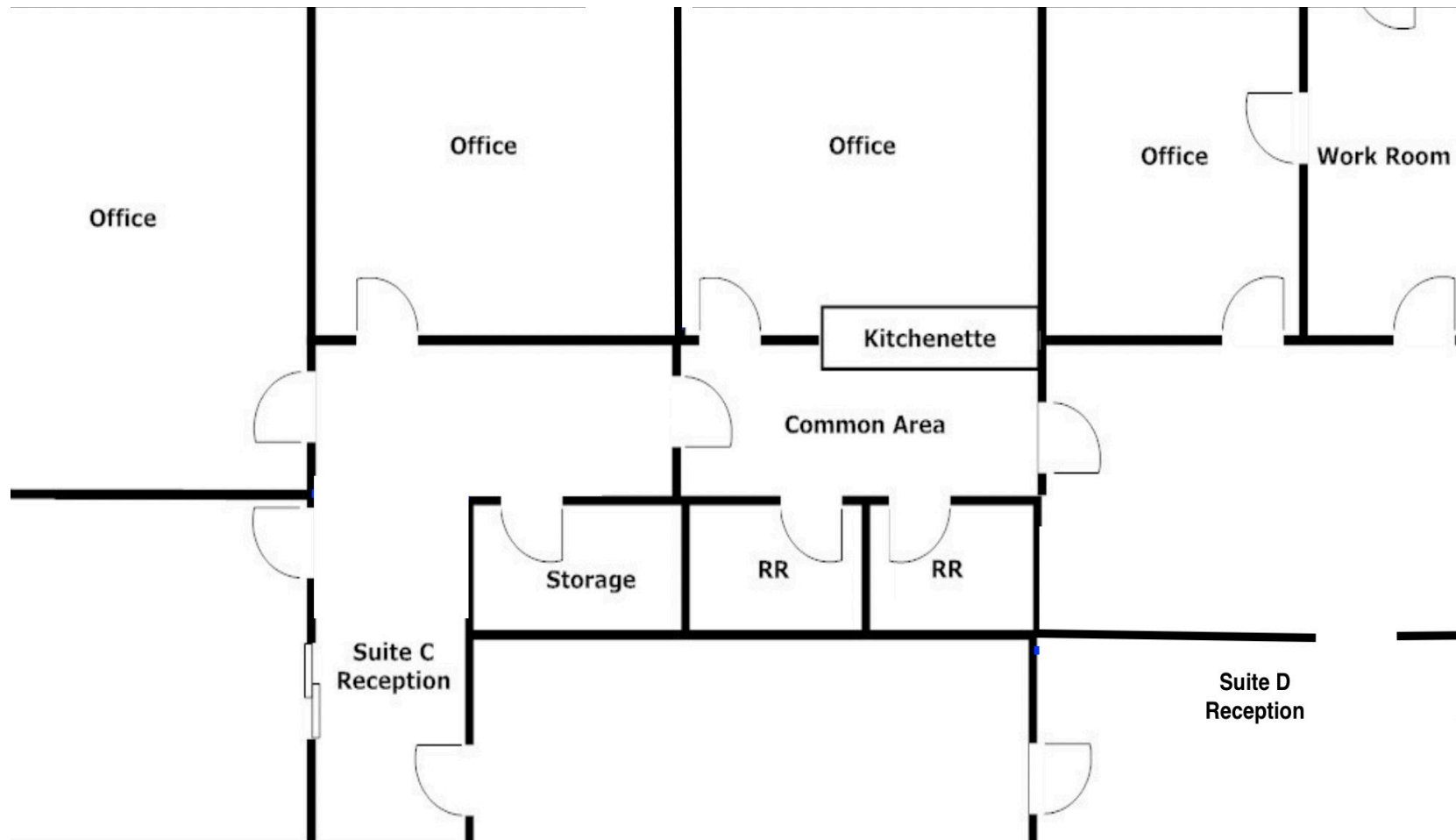
Contact Broker:
Matt Graham
Lic# 01804235

to learn more, visit: www.mdgre.com

1005 N Demaree Street
Visalia, California 93291
O | 559.754.3020

PLEASE NOTE: ALL INFORMATION AND REPRESENTATION MADE HEREIN, WHILE NOT GUARANTEED, HAVE BEEN SECURED FROM SOURCES WE BELIEVE TO BE RELIABLE, HOWEVER, THEY ARE NOT WARRANTED BY MATT GRAHAM & ASSOCIATES AND ARE SUBJECT TO CHANGE WITHOUT NOTICE.

FLOOR PLAN

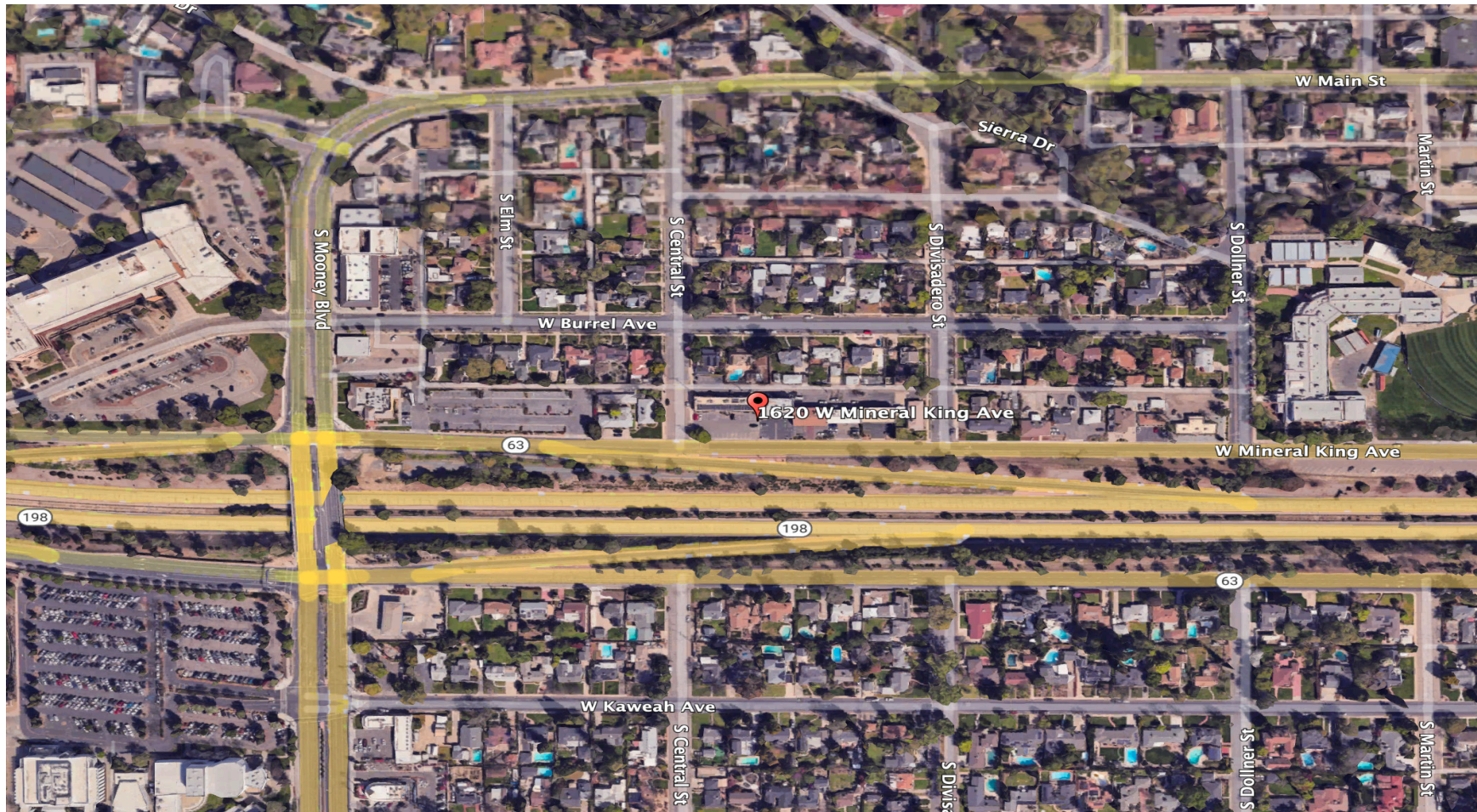


1620 W Mineral King Ave | Visalia, CA

GRAHAM & ASSOCIATES

Property For Lease

PROPERTY LAYOUT



PLEASE NOTE: ALL INFORMATION AND REPRESENTATION MADE HEREIN, WHILE NOT GUARANTEED, HAVE BEEN SECURED FROM SOURCES WE BELIEVE TO BE RELIABLE, HOWEVER, THEY ARE NOT WARRANTED BY MATT GRAHAM & ASSOCIATES AND ARE SUBJECT TO CHANGE WITHOUT NOTICE.

PROPERTY PHOTOS

