



FOR LEASE



## MACADAM PLACE

**Available Office Spaces: 1,032 - 7,239 SF**

**6915 SW Macadam Avenue, Portland, OR**

Macadam Place is located in the vibrant John's Landing Community of South Portland, walking distance to retail, restaurants, and parks nearby. This property offers Willamette River views and provides tenants with excellent proximity to Downtown Portland and the southwest suburbs.

**Brand new bike storage facility, tenant coffee lounge, and showers ready for Tenant use!**

**MCCOY DOERRIE, SIOR**  
Senior Vice President | Licensed in OR & WA  
503-523-7751 | [mccoy@capacitycommercial.com](mailto:mccoy@capacitycommercial.com)

**JEFF FALCONER, SIOR**  
Principal | Licensed in OR  
503-542-4346 | [jeff@capacitycommercial.com](mailto:jeff@capacitycommercial.com)



**BUILDING SPECS**

**FOR  
LEASE**



**PROPERTY DETAILS & AMENITIES**

<b>Address</b>	6915 SW Macadam Avenue, Portland, OR
<b>Total Available SF</b>	15,249 SF
<b>Renovated</b>	Lobby & Common Area Upgrades Recently Completed
<b>Free Parking</b>	<ul style="list-style-type: none"> <li>• 2.80/1,000 SF</li> <li>• 50 Surface Spaces</li> <li>• 20 Covered Spaces</li> </ul>



SHOWER



FREE PARKING



ESPRESSO MACHINE



FITNESS ROOM



BIKE ROOM

**AVAILABILITIES**

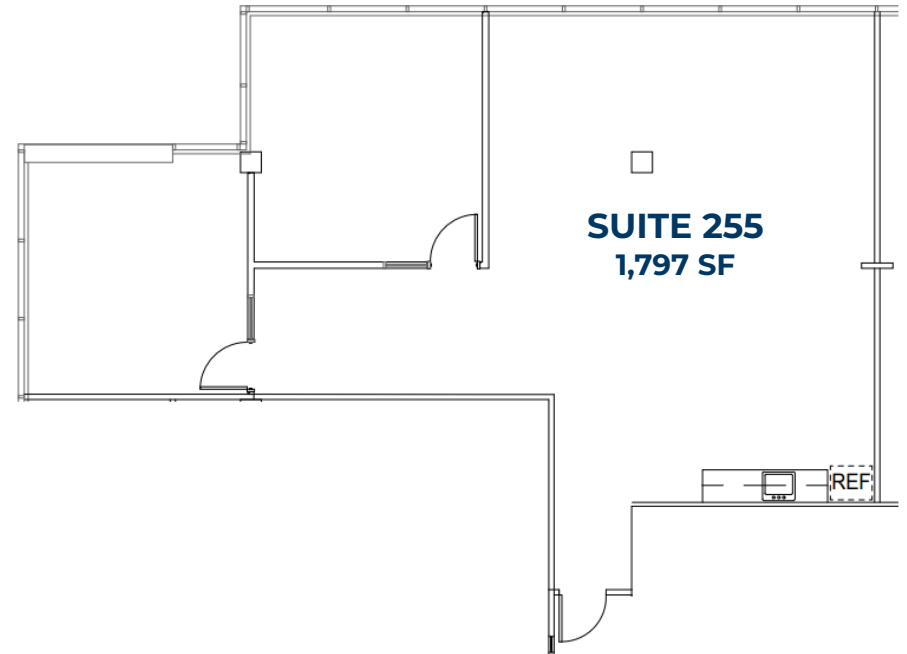
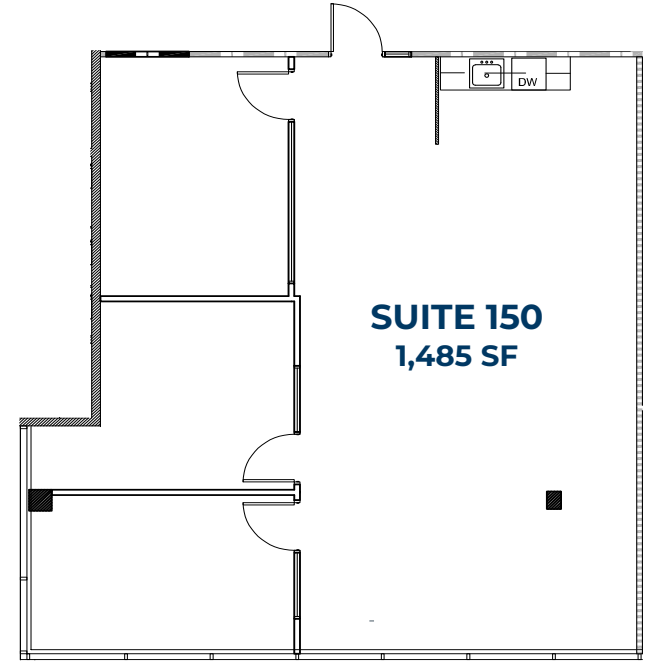
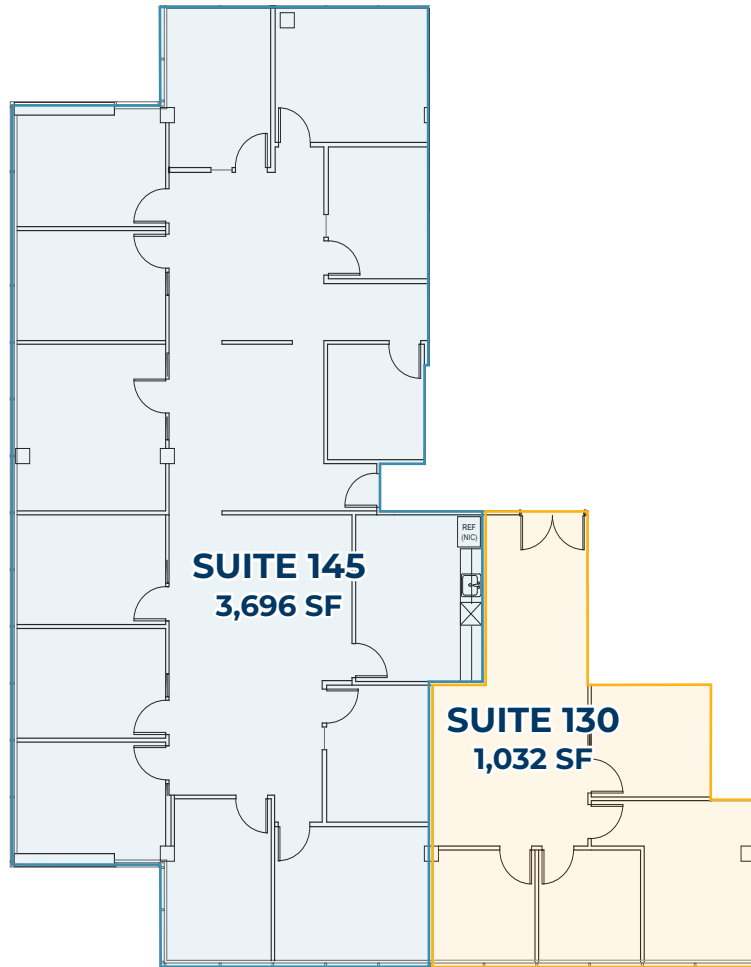
<b>Suite 130*</b>	1,032 RSF	\$32.50 RSF - Full Service
<b>Suite 145*</b>	3,696 RSF	\$32.50 RSF - Full Service
<b>Suite 150</b>	1,485 RSF	\$32.50 RSF - Full Service
<b>Suite 255</b>	1,797 RSF	\$32.50 RSF - Full Service
<b>Suite 300**</b>	4,459 RSF	\$36.00 RSF - Full Service
<b>Suite 325**</b>	2,780 RSF	\$36.00 RSF - Full Service

\* Suites Combinable to 4,728 RSF

\*\* Suites Combinable to 7,239 RSF

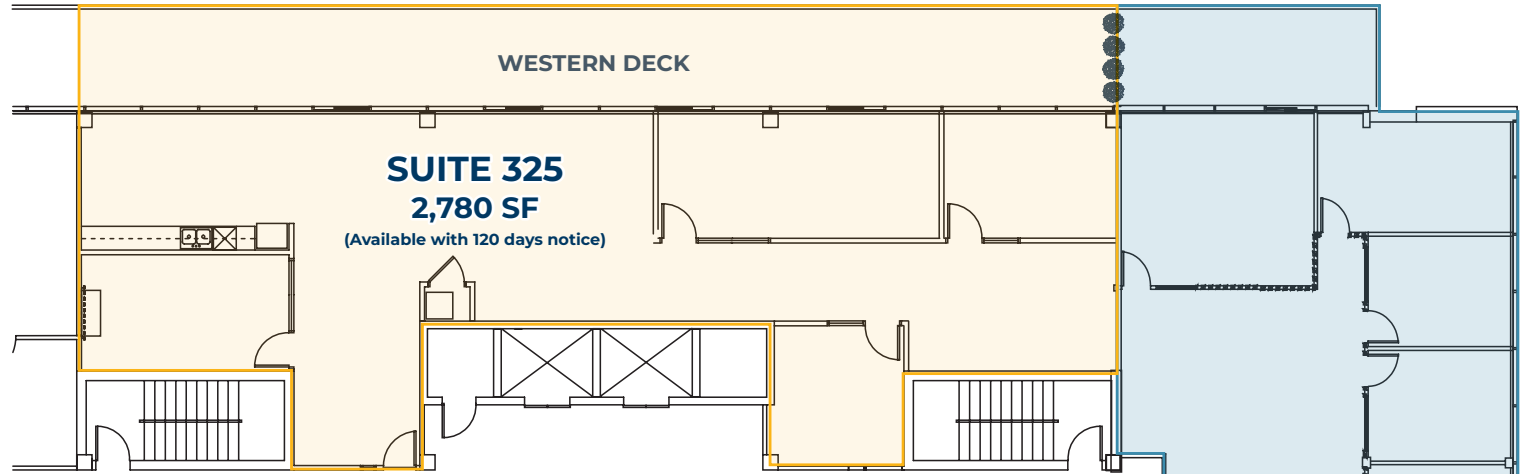


# AVAILABLE SUITES FLOORS 1 & 2

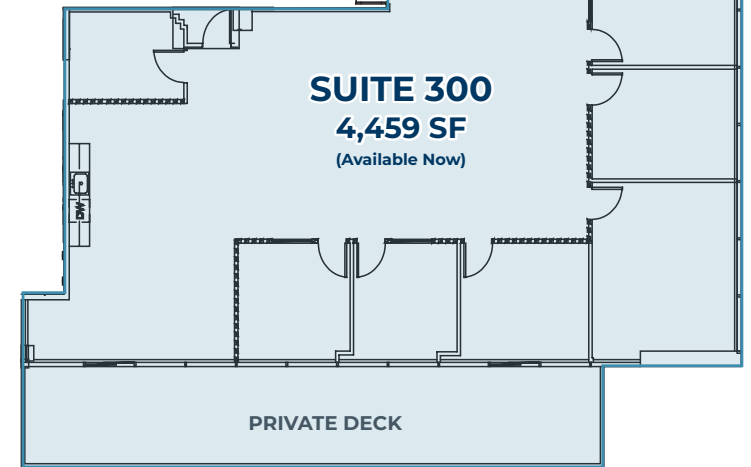




AVAILABLE SUITES  
FLOOR 3



Suite 300 Conference Room & Western View

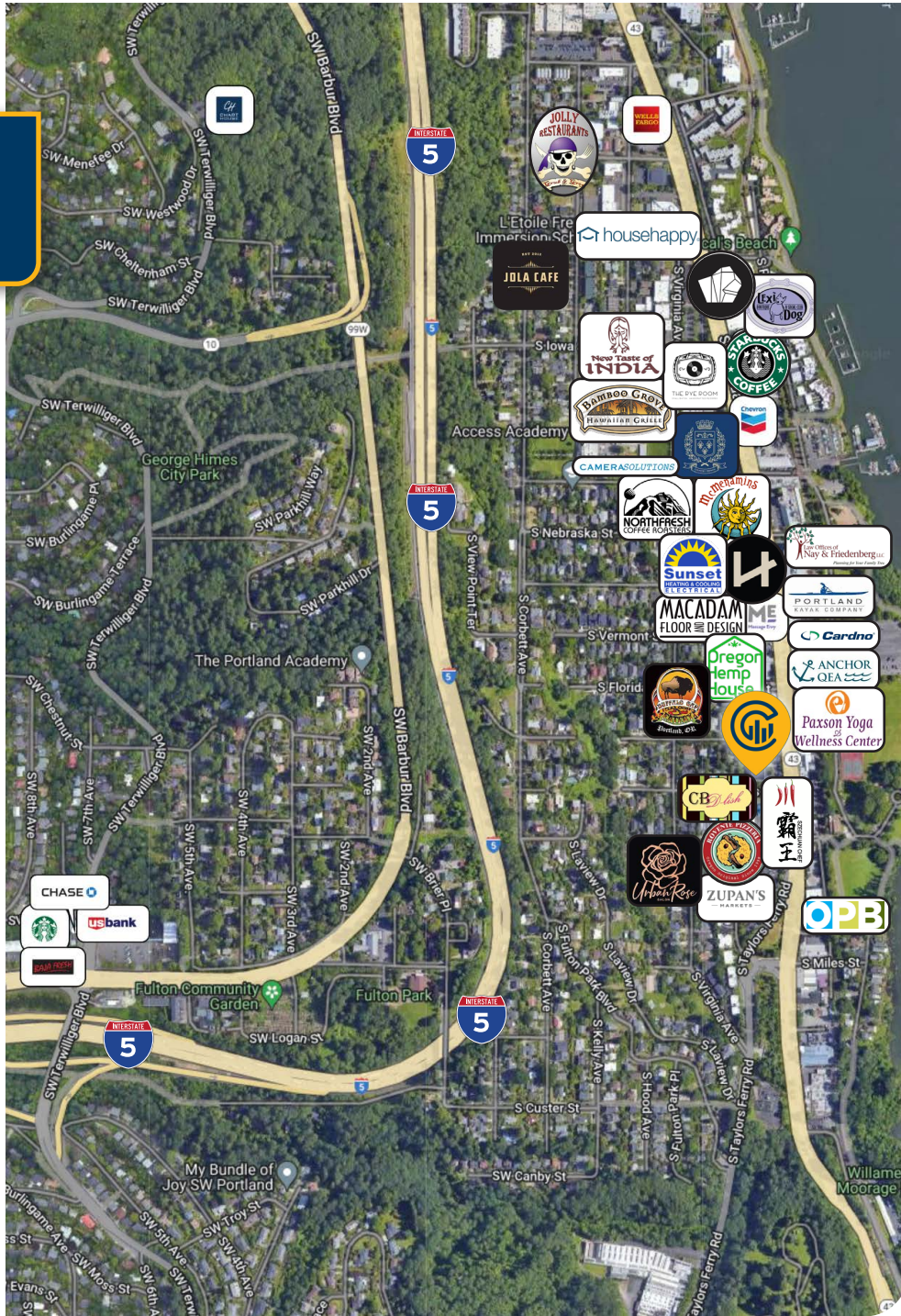


Suite 300 Conference Room & Western View

**Suite 300** has been fully remodeled to expose the ceiling in the common areas, new LED lighting throughout as well as a great kitchen and two private decks. Suite 300 can be combined with Suite 325 which also has an open ceiling/creative look, for a total of 7,239 RSF.



# AREA HIGHLIGHTS



**72**

Walk Score®  
"Walkable"

**90**

Bike Score®  
"Biker's Paradise"

**40**

Transit Score®  
"Good Transit"

Ratings provided by  
www.walkscore.com/

**MCCOY DOERRIE, SIOR**  
Senior Vice President | Licensed in OR & WA  
503-523-7751 | mccoym@capacitycommercial.com

**JEFF FALCONER, SIOR**  
Principal | Licensed in OR  
503-542-4346 | jeff@capacitycommercial.com

**MACADAM PLACE**