



REAL ESTATE ADVISORS

BROKERAGE . DEVELOPMENT CONSULTING . INVESTMENT SALES

FOR LEASE

11-B Barkingham Lane, Greenville, SC 29607



LEASE RATE:
\$20/sf + nnn

PROPERTY INFORMATION

- Approximately +/-1500sf
- Retail or Office Space Available
- Existing Retail Center
- Pre-leasing now (tenant is in the process of vacating)
- Ample parking, in front and behind building
- Signage on Butler Road
- Access off I-385
- Prime location off Butler Rd, near Woodruff Rd intersection

CONTACT:

Jason P. Klue, BIC
864.905.8401
Jason@KlueREA.com

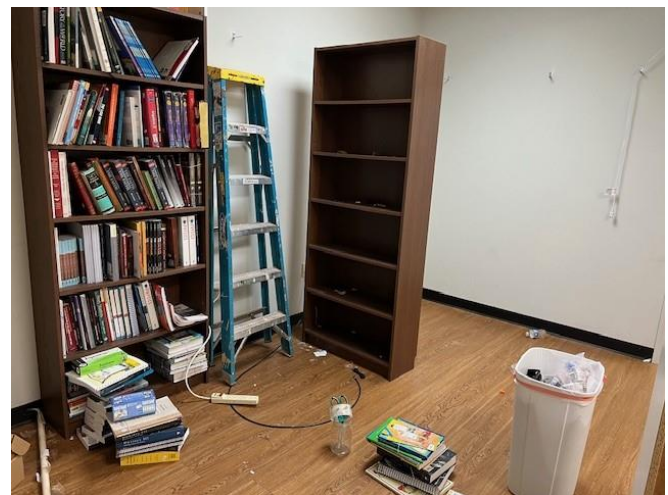
Klue Real Estate Advisors
P.O. Box 925
Simpsonville, SC 29681

WWW.KLUEREALESTATEADVISORS.COM

This information has been secured from sources we believe to be reliable, but we make no representations or warranties, expressed or implied, as to the accuracy of the information. The information is subject to the possibility of errors, omissions, change of price or other conditions, prior sale, lease or withdrawal without notice.

Photos

11-B Barkingham Lane, Greenville, SC 29607





REAL ESTATE ADVISORS

BROKERAGE . DEVELOPMENT CONSULTING . INVESTMENT SALES

MAP

11-B Barkingham Lane, Greenville, SC 29607



Jason P. Klue, BIC
864.905.8401
Jason@KlueREA.com

Klue Real Estate Advisors
P.O. Box 925
Simpsonville, SC 29681

