

±9.94 ACRES

FM 1960 & WELCOME LN.

HOUSTON, TEXAS

REDUCED: \$3.95 PSF



KRISTEN MCDADE

Managing Director

T: +1 713 331 1796

kristen.mcdade@cushwake.com

MATTHEW DAVIS

Senior Director

T: +1 713 331 1798

matthew.davis@cushwake.com

CHARLIE MCGAHREN

Associate

T: +1 713 331 1772

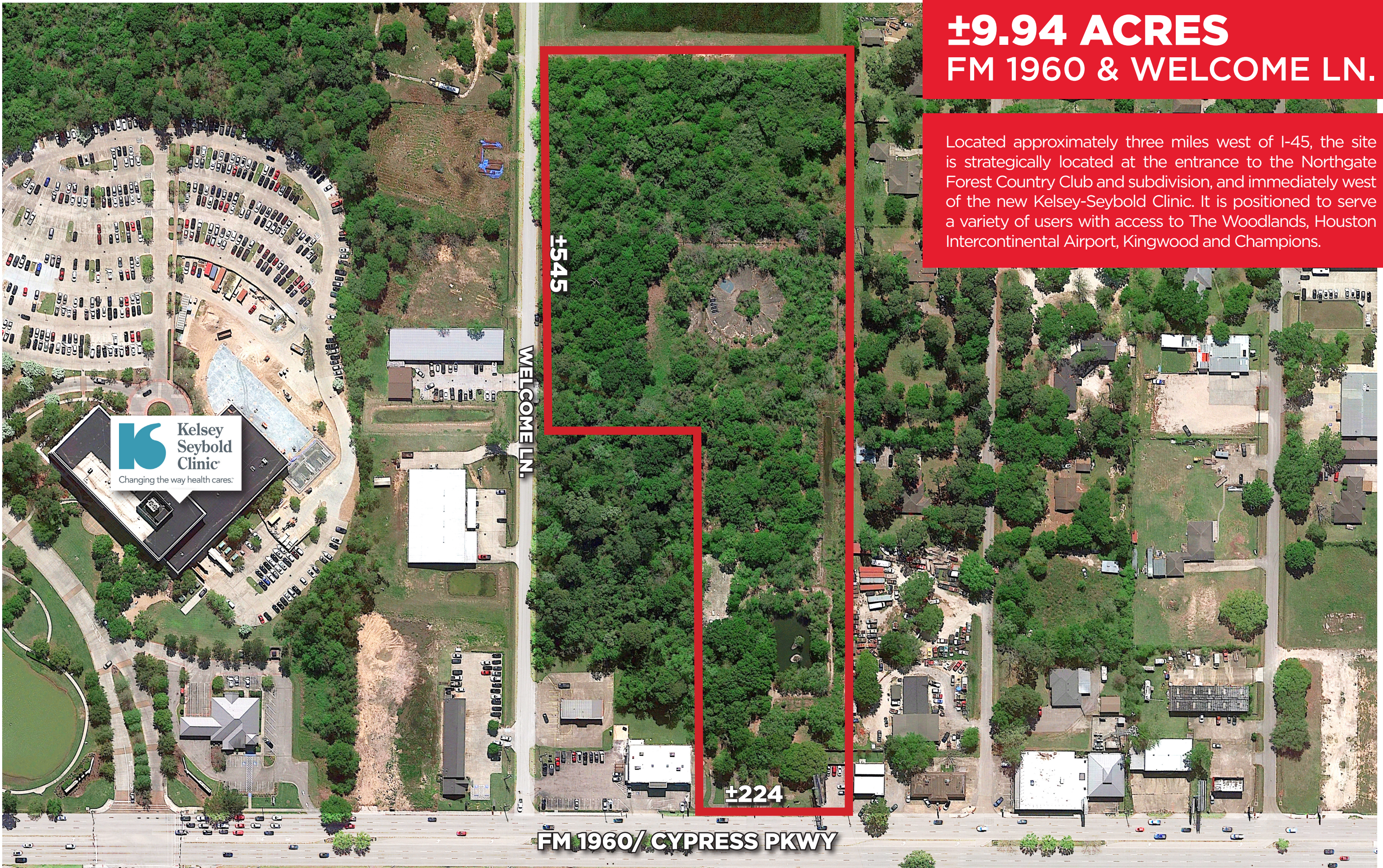
charlie.mcgahren@cushwake.com



CUSHMAN & WAKEFIELD

±9.94 ACRES FM 1960 & WELCOME LN.

Located approximately three miles west of I-45, the site is strategically located at the entrance to the Northgate Forest Country Club and subdivision, and immediately west of the new Kelsey-Seybold Clinic. It is positioned to serve a variety of users with access to The Woodlands, Houston Intercontinental Airport, Kingwood and Champions.



FM 1960/ CYPRESS PKWY

WELCOME LN.

±545

±224

±9.94 ACRES
FM 1960 & WELCOME LN.
HOUSTON, TEXAS



TC JESTER BLVD.

FM 1960/CYPRESS PKWY



WELCOME LN.



- ±9.94 acres of land, located directly on FM 1960/ Cypress Creek Parkway, the most trafficked street in Northwest Houston.
- ±224' frontage along FM 1960 and ±545' along Welcome Lane
- Traffic count: FM 1960 @ Welcome LN. - 48,598 VPD
- Spring ISD
- There are no pipelines, access or other easements bisecting the tract.
- **Nearby MUD 233 has utilities and has indicated they are willing to serve the site with a use preference that would complement the Kelsey Seybold next door.** Uses may include senior care/living, Memory Care, Nursing Facility or similar uses
- No zoning

REDUCED: \$3.95 PSF

KRISTEN MCDADE

Managing Director

T: +1 713 331 1796

kristen.mcdade@cushwake.com

MATTHEW DAVIS

Senior Director

T: +1 713 331 1798

matthew.davis@cushwake.com

CHARLIE MCGAHREN

Associate

T: +1 713 331 1772

charlie.mcgahren@cushwake.com

