

# 25395 RYE CANYON ROAD VALENCIA CA 91355



## FOR LEASE - 43,000 SF

**EXCLUSIVELY LISTED BY:**

**Eric Seidenglanz**

Vice President

d: 818-815-2426

eseidenglanz@naicapital.com

Cal DRE Lic #01975684

**NAI Capital - Encino**

15821 Centura Blvd., Suite 320E

Los Angeles, CA 91436

d: 818-905-2400

www.naicapital.com

**NAI Capital**  
COMMERCIAL REAL ESTATE SERVICES, WORLDWIDE

# PROPERTY HIGHLIGHTS

25395 RYE CANYON ROAD, VALENCIA CA 91355

|                            |   |
|----------------------------|---|
| Monthly Rent               | \$42,570  |
| Monthly Rent / SF          | \$0.99  |
| Monthly Operating Expenses | \$10,750  |
| Operating Expenses/SF      | \$0.25  |
| Unit Size                  | 43,000 SF   |
| Clear Height               | 20' – 22'   |
| Fenced Yard Space          | ± 25,000 SF (139' x 24')  |
| Power                      | 800 Amps : 277/480 Volt : 3<br>Phase : 4 Wire   |
| DH Doors                   | Four: Three (3) 14'x12' (24'<br>above grade), One (1) 12'x16'<br>with two dock high positions |
| GL Doors                   | One (1) 12'x10'   |
| Office SF                  | ± 5,849 SF  |
| Unfinished Office Mezz. SF | ± 1,900 SF  |



FENCED  
SECURE YARD



HEAVY  
POWER



MINIMUM  
OFFICE SPACE



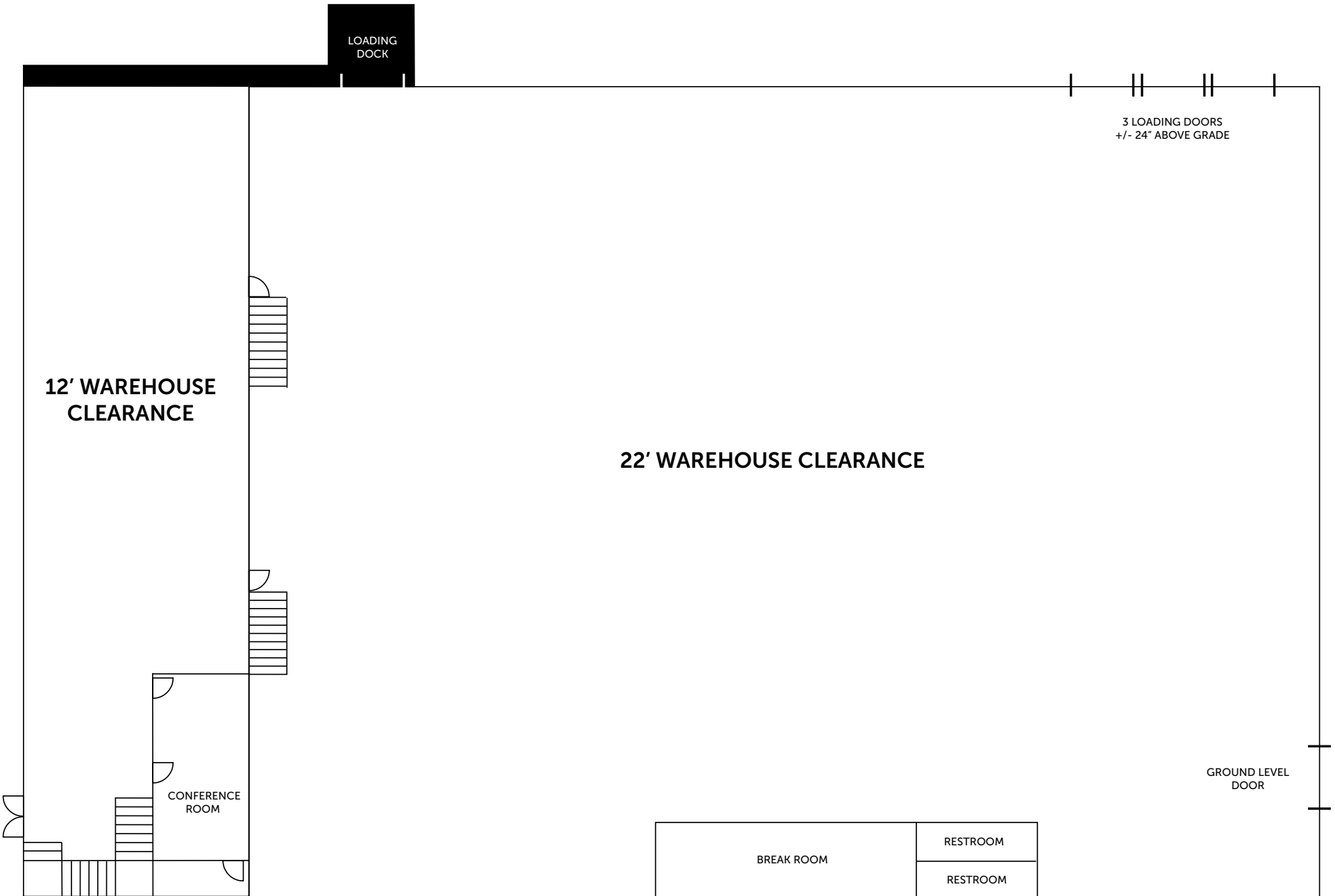
EXCELLENT  
LOADING



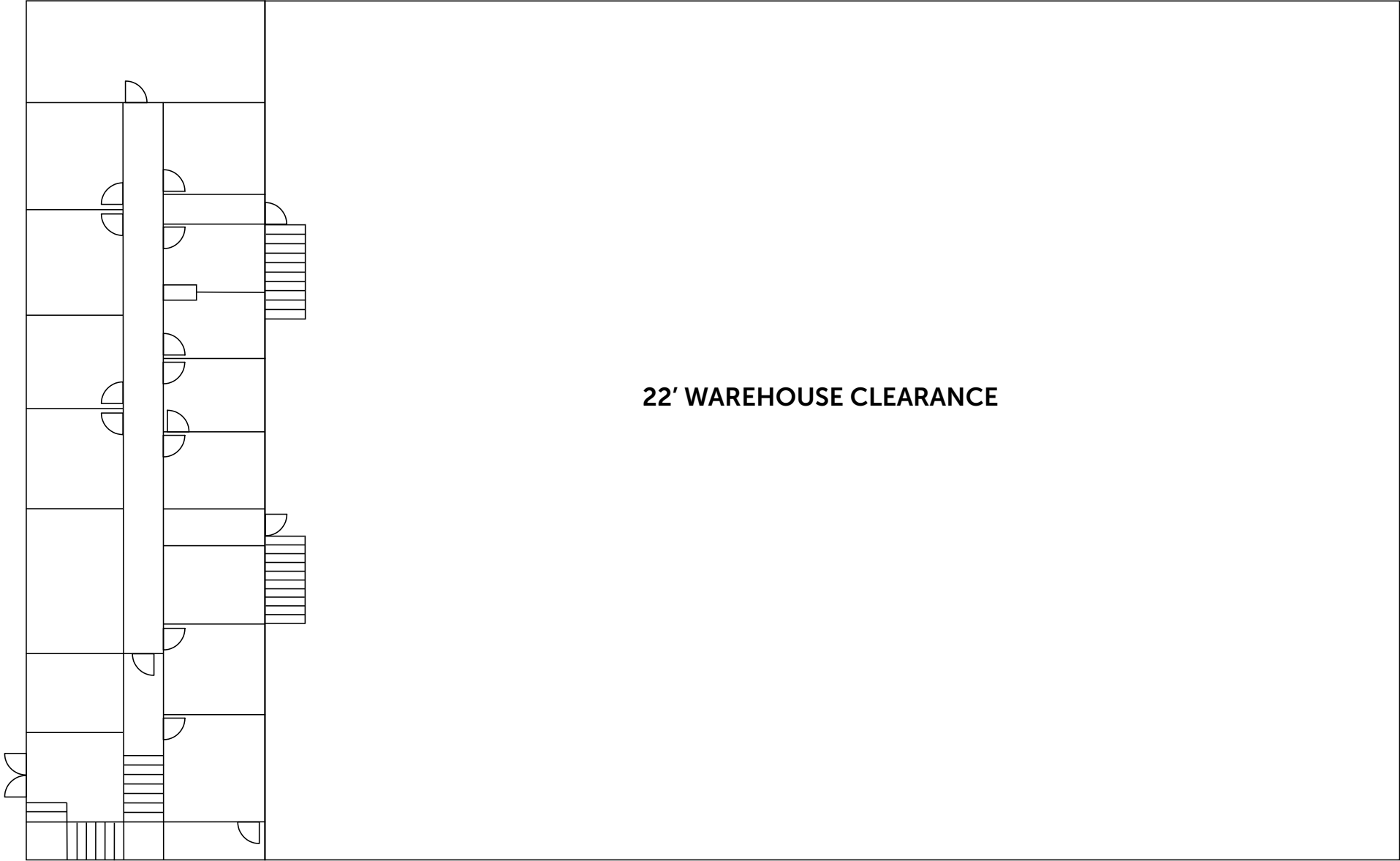
# PROPERTY PHOTOS



# FIRST FLOOR



# SECOND FLOOR



# PROPERTY PHOTOS



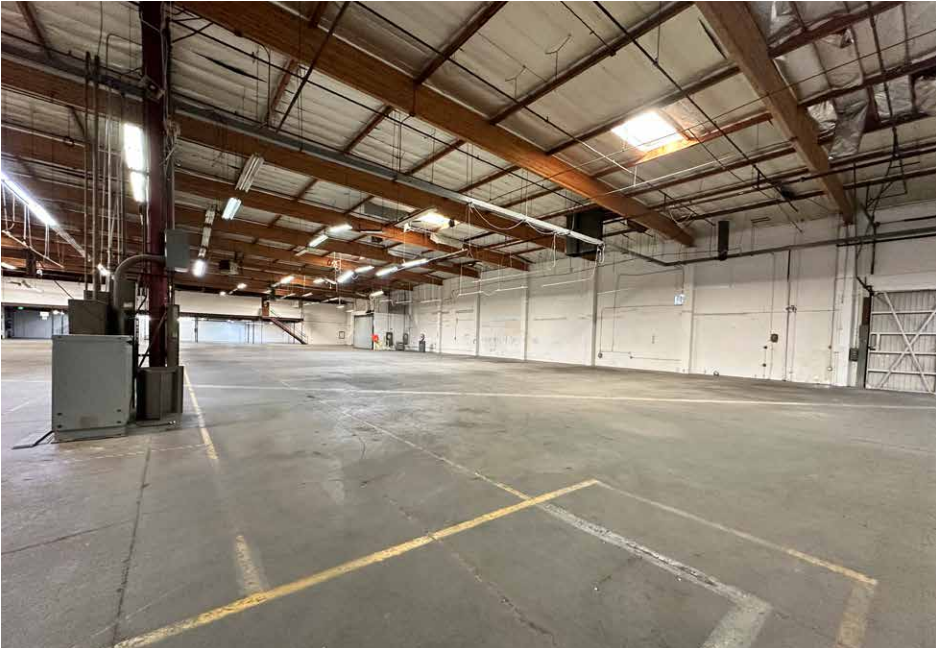
# PROPERTY PHOTOS



# PROPERTY PHOTOS



# PROPERTY PHOTOS



# AERIAL MAP



# 25395 RYE CANYON ROAD VALENCIA CA 91355



**FOR LEASE - 43,000 SF**

*No warranty, express or implied, is made as to the accuracy of the information contained herein. This information is submitted subject to errors, omissions, change of price, rental or other conditions, withdrawal without notice, and is subject to any special listing conditions imposed by our principals. Cooperating brokers, buyers, tenants and other parties who receive this document should not rely on it, but should use it as a starting point of analysis, and should independently confirm the accuracy of the information contained herein through a due diligence review of the books, records, files and documents that constitute reliable sources of the information described herein. Logos are for identification purposes only and may be trademarks of their respective companies. NAI Capital, Inc. Cal DRE Lic. #02130474.*

## EXCLUSIVELY LISTED BY:

### Eric Seidenglanz

Vice President

d: 818-815-2426

eseidenglanz@naicapital.com

Cal DRE Lic #01975684

### NAI Capital - Encino

15821 Centura Blvd., Suite 320E

Los Angeles, CA 91436

d: 818-905-2400

www.naicapital.com

**NAI**Capital  
COMMERCIAL REAL ESTATE SERVICES, WORLDWIDE