

# Jordan Road Business Center

6920 South Jordan Road, Centennial 80112

## AVAILABILITY

### UNIT L - 1,650 SF

- Available February 1, 2025
- 1 office, 75% warehouse
- Drive-In Door
- Monument Signage

### UNIT H - 1,313 SF

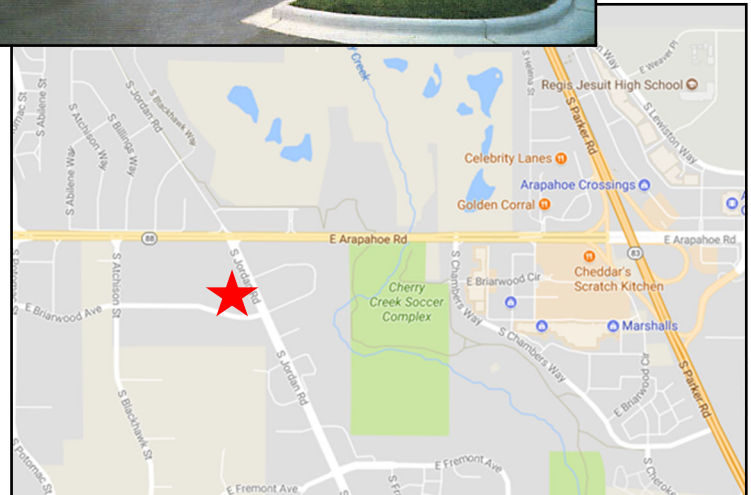
- Available January 1, 2025
- 1 office, kitchenette, 50% warehouse
- Corner Unit
- Drive-In Door

### UNIT O - 1,650 SF

- Available February 1, 2025
- 1 office, 75% warehouse
- Drive-In Door
- Monument Signage

## Property Highlights

- Ideal Access & Visibility
- Backlit signage opportunities
- Comcast Available
- Quick & Easy Access to I-25 & C-470
- New Parking Lot and Updated Façade



- **ZONING:** I-1, Light Industrial
- **PARKING:** 85 Free surface Spaces (2.39/1,000SF)
- **POWER:** 240v, 3p
- **CLEARANCE:** 10' x 10' drive-in  
12' warehouse clearance