



FOR LEASE

118 N Lewis St, Monroe WA 98272

Downtown Monroe's sole large-format retail space and parking lot are conveniently situated on the north end of Lewis Street, just two blocks away from the city's major retail centers and Hwy 2.

Property Highlights

1,263 SF spa/salon

249 SF spa/salon

Base rent: Upon Request

NNN rate: \$4.75/SF

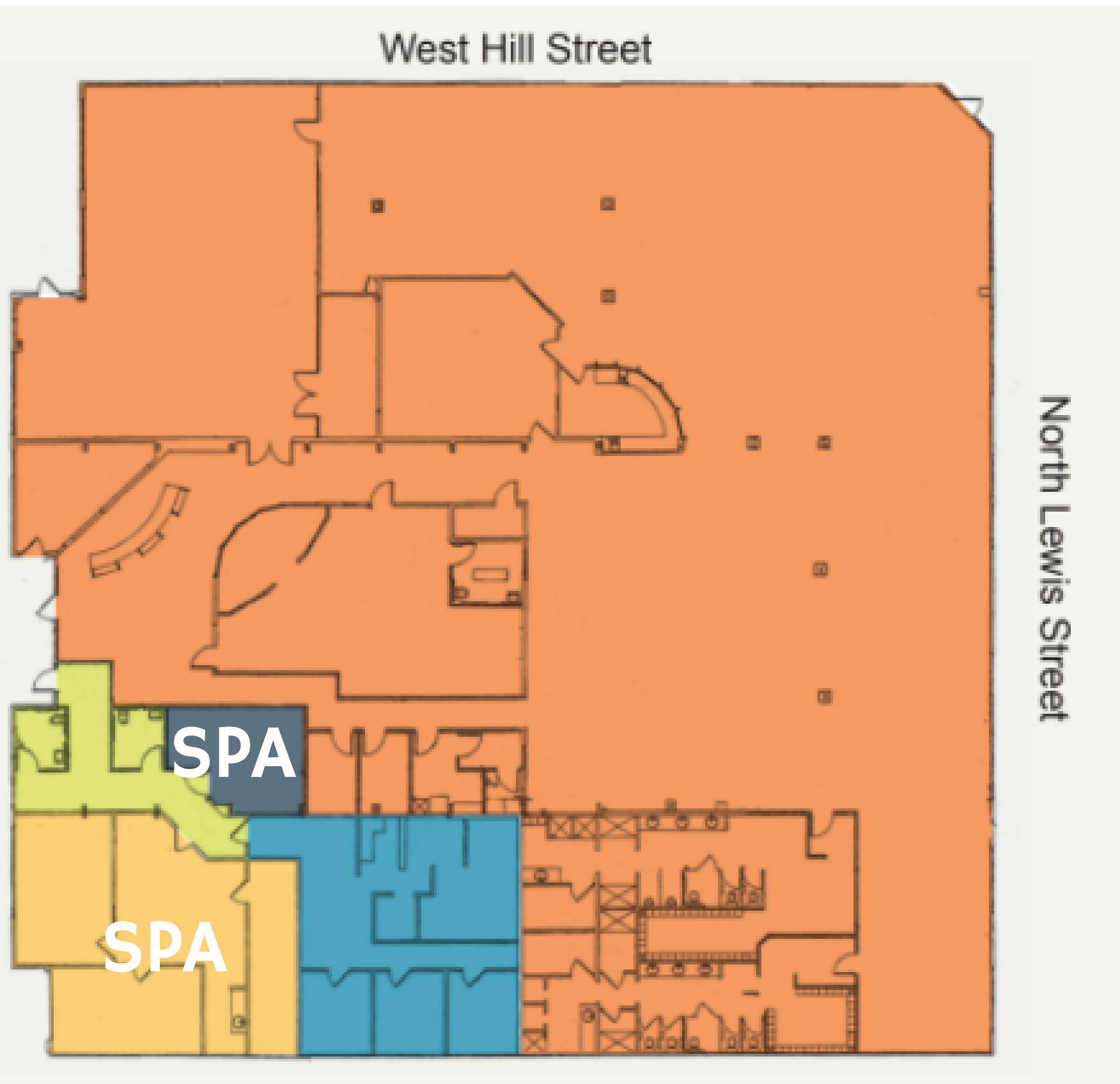
53 Parking Spots

Tall Ceilings

Located at the center of downtown
Monroe



Floor Plan



1,263 SF

Former Spa/Salon Available

249

Former Spa/Salon Available

17,924

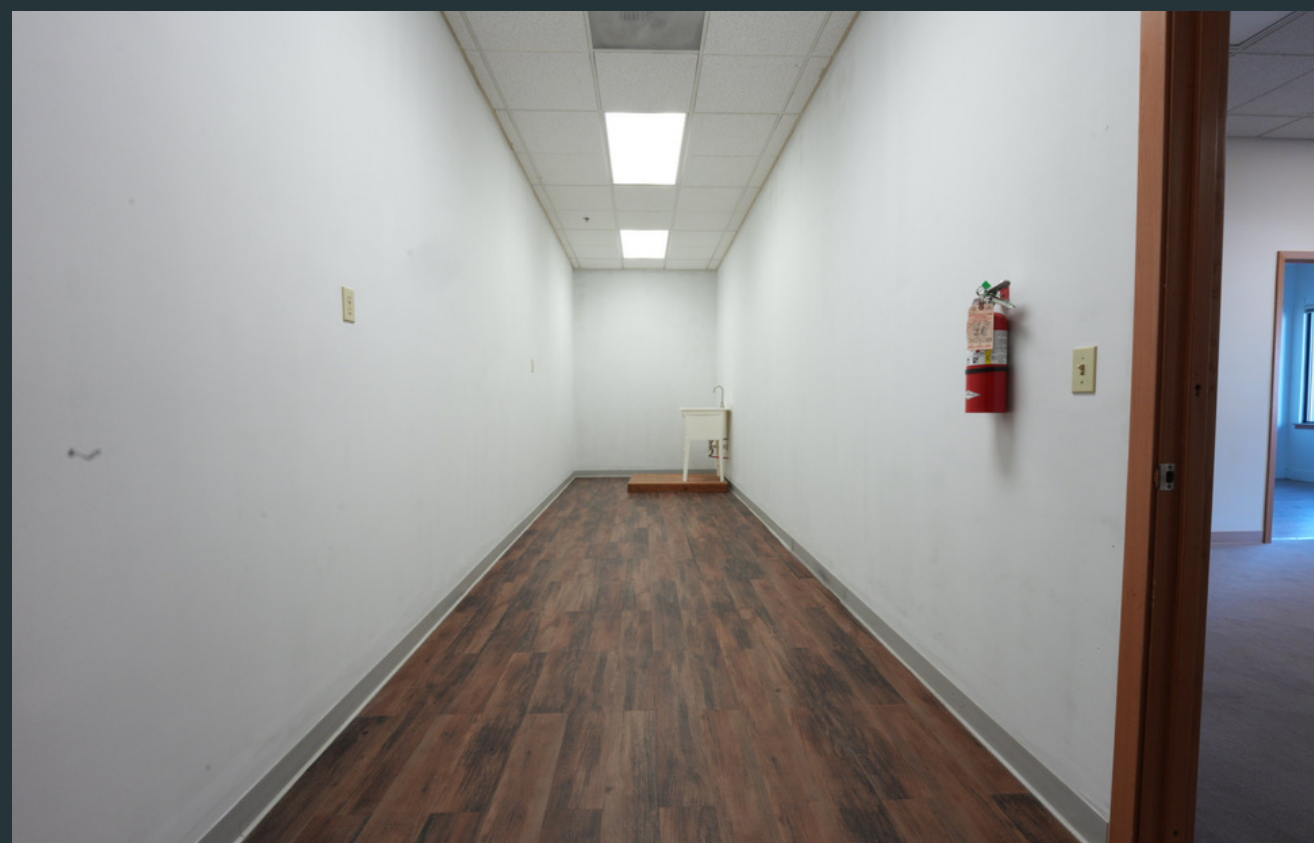
Total Size

Demographics

	Avg. H.H. Income	Population	Daytime Population
5 Minutes	\$94,492	17,968	45,830
10 Minutes	\$112,870	29,260	70,257
15 Minutes	\$125,892	44,732	151,742

Monroe WA

Monroe, Washington, is a scenic city located in Snohomish County, known for its stunning natural setting at the confluence of the Skykomish, Snohomish, and Snoqualmie rivers. Positioned near the Cascade foothills, approximately 30 miles northeast of Seattle, Monroe offers a blend of natural beauty and accessibility.



Please contact us for more information and to schedule a viewing

Todd Sims

310.429.3700

todd@lightspaceshadow.com

Salina Hernandez

951.500.8079

salina@lightspaceshadow.com

Jae Evans

425.890.9754

jae@jaeevans.com

The details provided here come from sources we consider trustworthy. However, this is given without any explicit or implicit assurance, warranty, or guarantee regarding its correctness. We advise prospective buyers or tenants to independently investigate and verify any material matters, which includes, but is not limited to, statements regarding income and expenses. It's recommended to seek advice from your lawyer, accountant, or another qualified professional.