



**MARTIN  
COMMERCIAL  
GROUP**

Commercial Real Estate Services

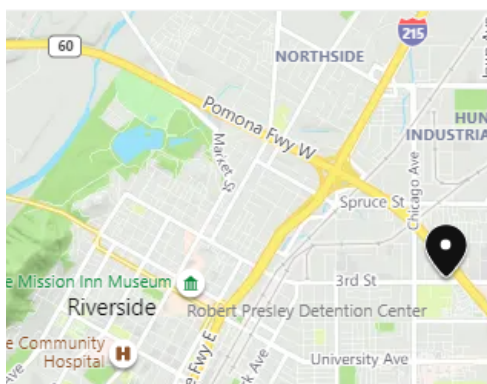
# AVAILABLE FOR LEASE

**1,610 SQ. FT Multi-Tenant Office Suite**



**1525 Third Street, Suite A101, Riverside**

- Multi-Tenant Office Building
- End Unit/First Floor
- Lobby
- Open Work Space
- Private Offices
- Breakroom
- Wet Bar
- Common Area Restrooms
- Easy Access to 60/91/215 Fwys



**For More Information  
Please Contact:**

**ERIN LAGOMARSINO**

[elagomarsino@mcgre.com](mailto:elagomarsino@mcgre.com)

**951.684.1251**

*Since 1953...  
Orange County ~ Inland Empire*

The information contained herein has been obtained from sources we deem reliable. While we have no reason to doubt its accuracy, we do not guarantee it.

**WWW.MCGRE.COM**



**MARTIN  
COMMERCIAL  
GROUP**

Commercial Real Estate Services

**For More Information  
Please Contact:**

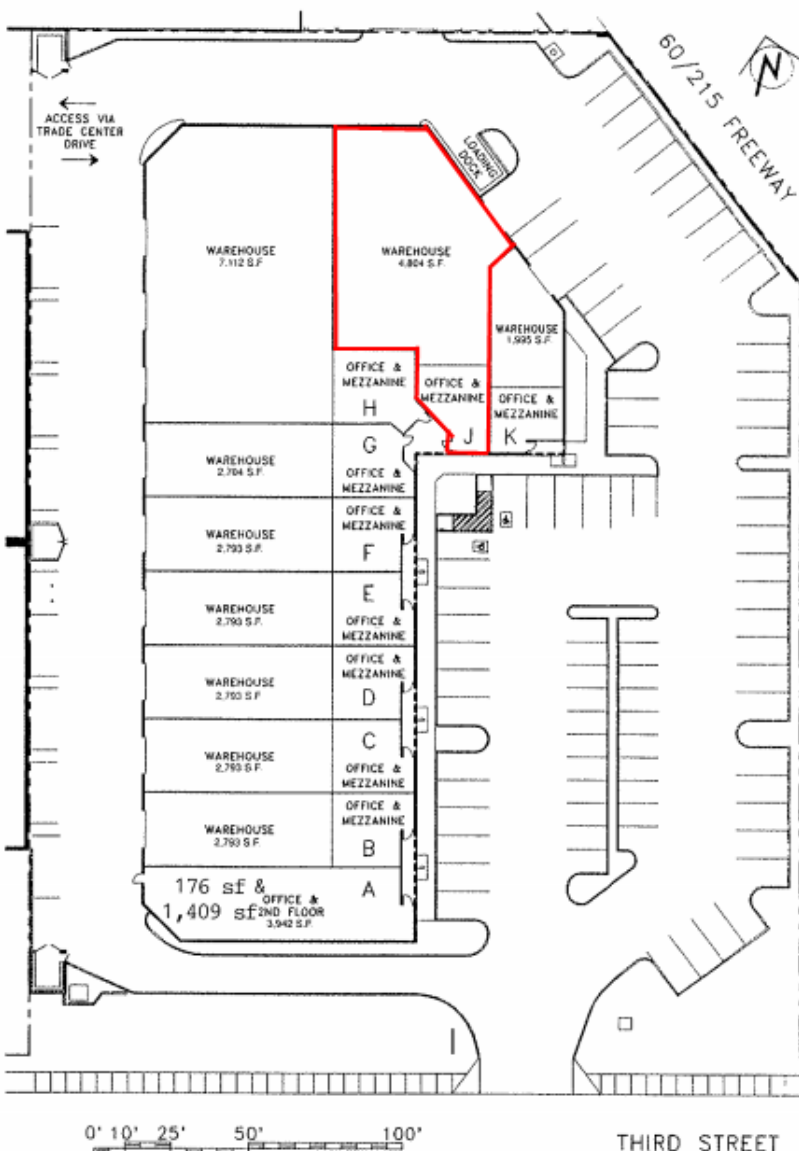
**ERIN LAGOMARSINO**

elagomarsino@mcgre.com  
DRE # 00992436

**951.684.1251**

*Since 1953...  
~Orange County~  
Inland Empire*

## RIVERSIDE TRADE CENTER



**WWW.MCGRE.COM**