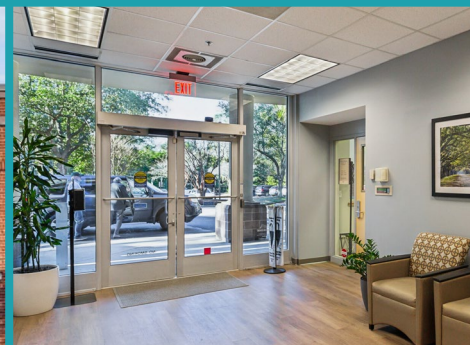


WE CREATE EXCEPTIONAL PLACES OF CARE

MOUNT PLEASANT MEDICAL OFFICE LONGPOINT

570 Long Point Road | Mount Pleasant, SC 29464



PROPERTY OVERVIEW

Mount Pleasant Medical Office Longpoint offers a modern, two-story medical facility in a prime location near Long Point Road and I-526. Designed for convenience and efficiency, the property provides a professionally managed environment with ample parking and excellent visibility. With easy access to Mount Pleasant and Charleston suburbs, plus nearby shopping, dining, and banking options, this property is ideal for healthcare professionals looking for a well-connected and high-exposure medical office space.

KEY FEATURES

- **Prime location** near Long Point Rd & I-526, ensuring accessibility
- **Signage opportunities** with strong visibility on Long Point Road
- **ENERGY STAR** certified for cost efficient operations
- **155 surface** parking spaces for tenants and visitors
- **Convenient** access to public transit via bus lines
- **Private** exterior entrance to suite
- **Surrounded** by dining, banking, and shopping options
- **Competitive** lease packages
- **Generous** tenant improvement allowances

Contact Lillibridge to Learn More

Erreca White, Regional Leasing Director
erreca.white@Lillibridge.com • 706.373.2889

