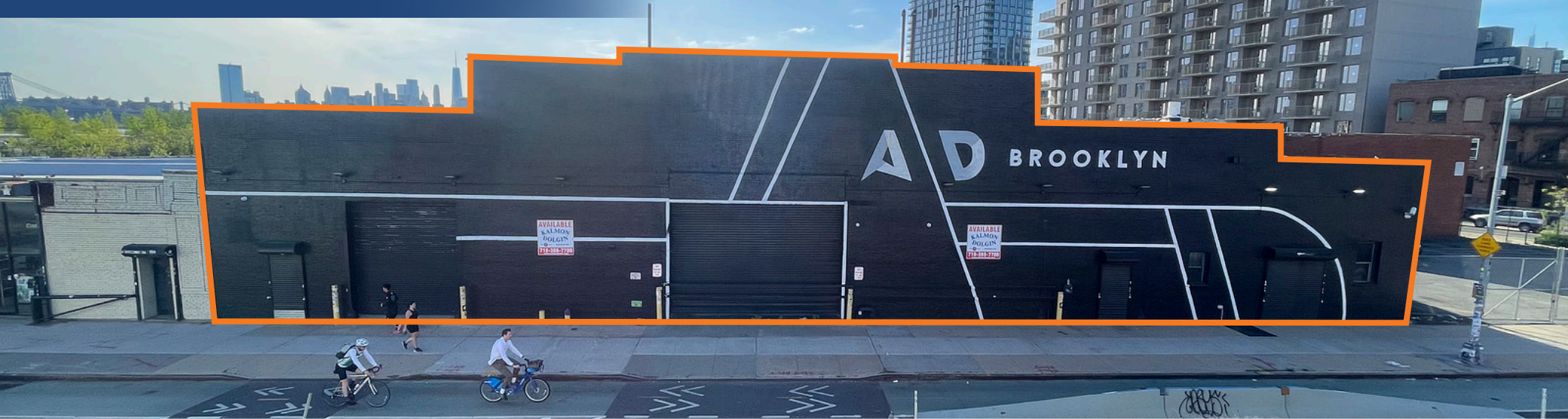


25 FRANKLIN STREET

WEST BLOCK BETWEEN MESEROLE AVENUE & QUAY STREET | GREENPOINT



25 FRANKLIN STREET

WEST BLOCK BETWEEN MESEROLE AVENUE & QUAY STREET | GREENPOINT

PROPERTY DETAILS

APPROXIMATE SIZE: 15,200 SF Ground Floor
10,000 SF Outdoor Space

FRONTAGE: 140'

CEILING HEIGHT: 20' - 30'

POSSESSION: Immediate

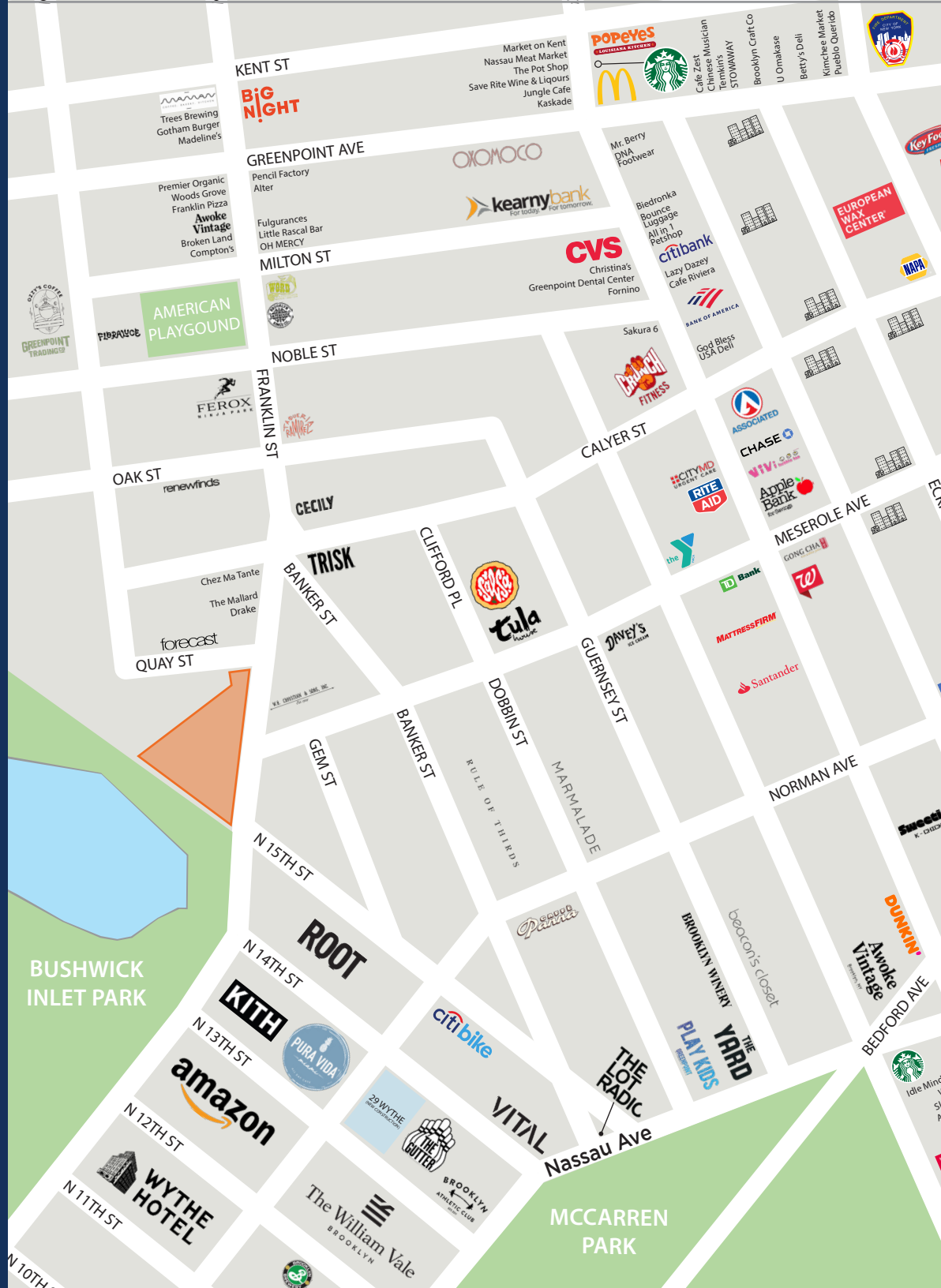
TRANSPORTATION:  

SITE STATUS: Formerly Vans Skatepark

ASKING RENT: Upon Request

HIGHLIGHTS

- One block from Greenpoint landing, which has 5,500 brand new residential apartments
- Private Outdoor Space
- Open Floorplan
- Tall Ceilings
- **Full Building Branding Opportunity**



WEST BLOCK BETWEEN MESEROLE AVENUE & QUAY STREET | GREENPOINT

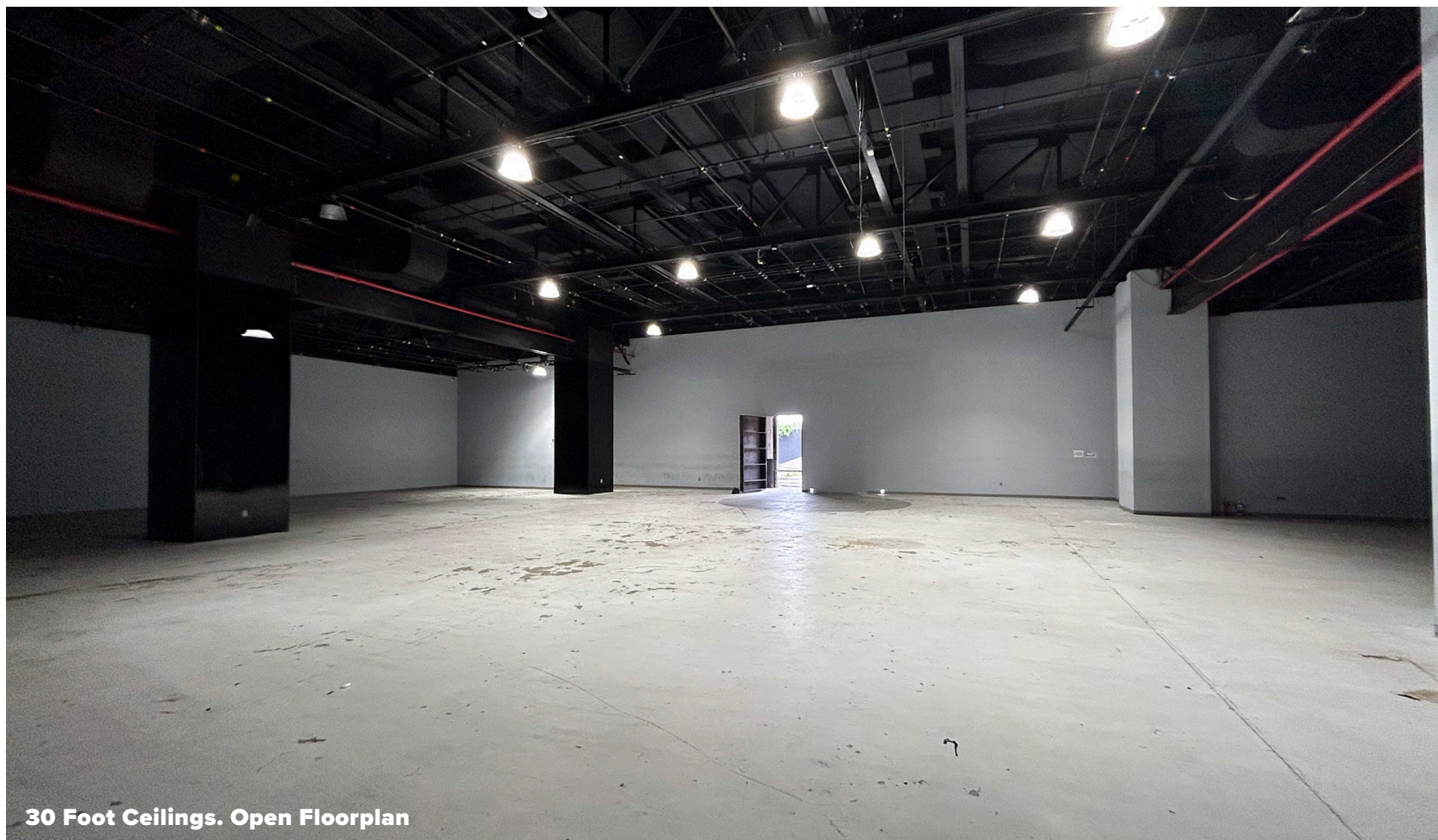
FLOOR PLANS:



**10,000 SF
Outdoor Space**

25 FRANKLIN STREET

WEST BLOCK BETWEEN MESEROLE AVENUE & QUAY STREET | GREENPOINT



30 Foot Ceilings. Open Floorplan

25 FRANKLIN STREET

WEST BLOCK BETWEEN MESEROLE AVENUE & QUAY STREET | GREENPOINT



25 FRANKLIN STREET

WEST BLOCK BETWEEN MESEROLE AVENUE & QUAY STREET | GREENPOINT

FOR MORE INFORMATION,
PLEASE CONTACT:

ALBERT HALAWANI

347.204.6578 | AHalawani@ksrny.com

DAVID GREEN

516.320.0260 | DDGreen@ksrny.com

