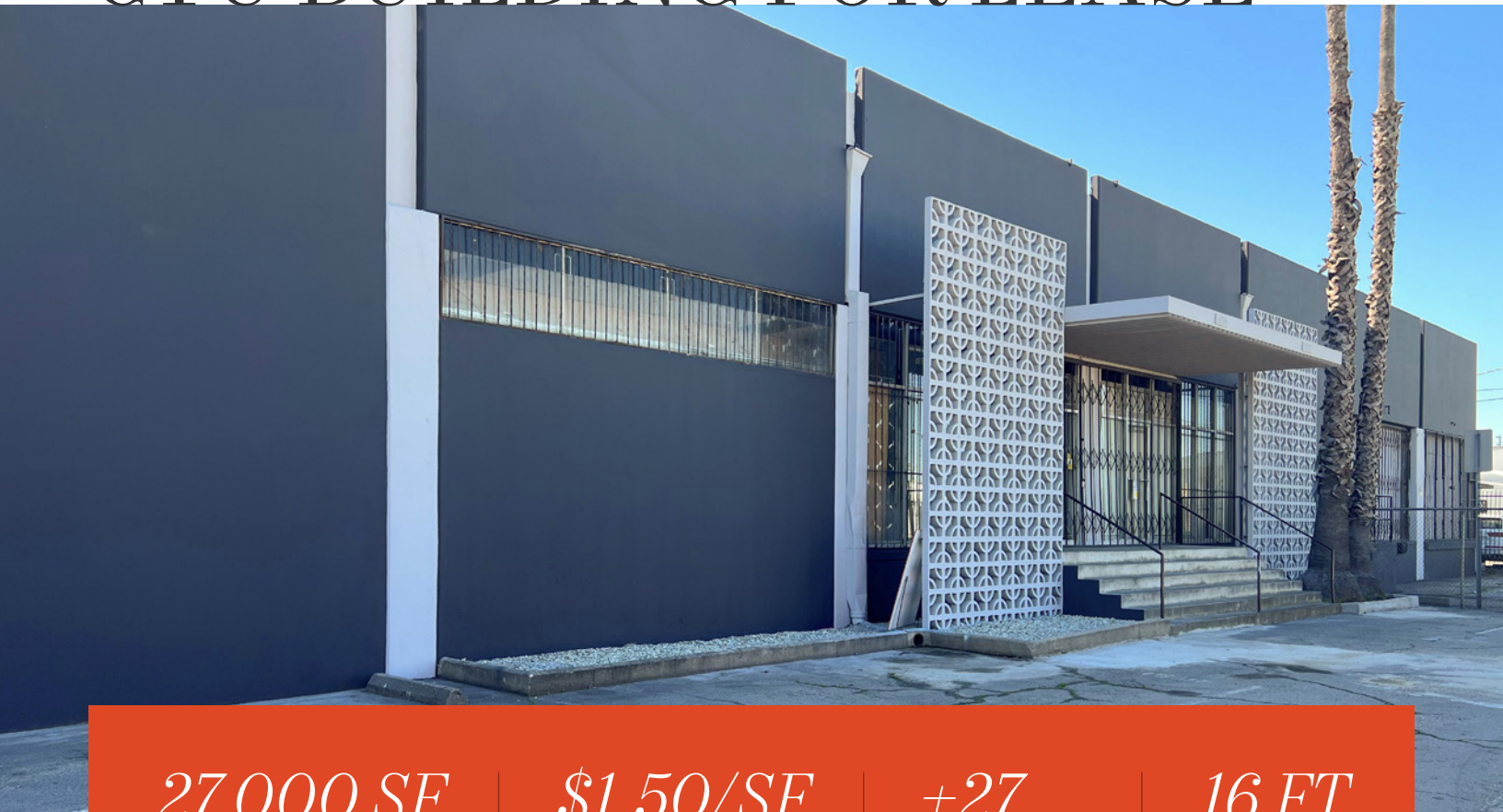


# CTU BUILDING FOR LEASE



*27,000 SF*

AVAILABLE

*\$1.50/SF*

LEASE RATE (GROSS)

*±27*

PARKING SPACES

*16 FT*

CLEAR HEIGHT

Ten (10) DH positions

2,544 SF well-appointed offices

16' minimum clear height

Outstanding column spacing - one row of interior posts  
(see floor plan)

Equipped with fire sprinklers

Two 200 amp-panels - one at 240 volts and one at  
480 volts (please verify)

Paved and fenced yard

Close proximity to DTLA and freeways

**TOM WILLIAMS**

213.225.7229

tom.williams@kidder.com

LIC N° 01270201

**NICK ARNST**

213.225.7226

nick.arnst@kidder.com

LIC N° 01927768

**LINDSAY PARK**

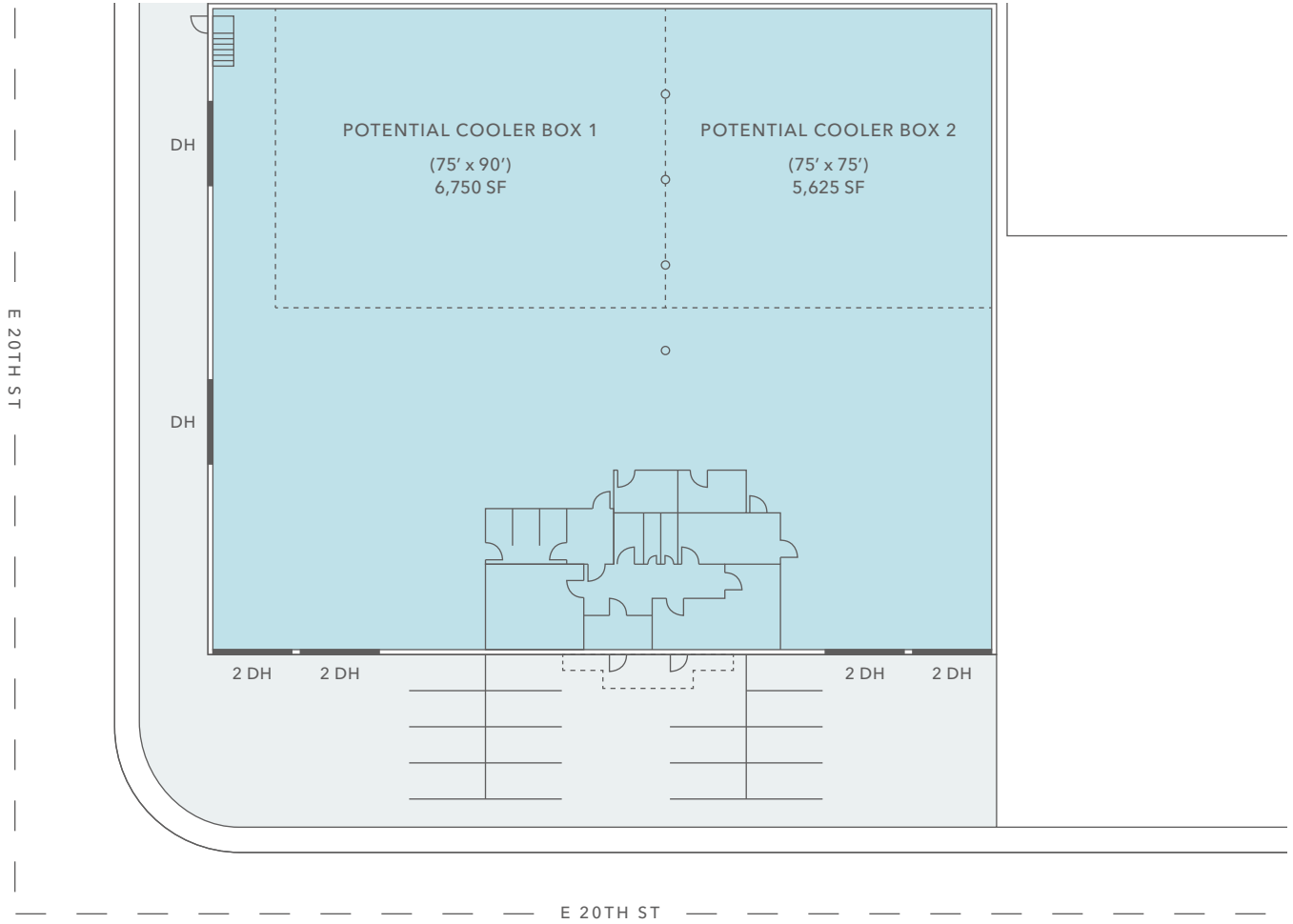
213.225.7234

lindsay.park@kidder.com

LIC N° 02178041

**KIDDER.COM**

This information supplied herein is from sources we deem reliable. It is provided without any representation, warranty, or guarantee, expressed or implied as to its accuracy. Prospective Buyer or Tenant should conduct an independent investigation and verification of all matters deemed to be material, including, but not limited to, statements of income and expenses. Consult your attorney, accountant, or other professional advisor.





**TOM WILLIAMS**  
213.225.7229  
tom.williams@kidder.com  
LIC N° 01270201

**NICK ARNST**  
213.225.7226  
nick.arnst@kidder.com  
LIC N° 01927768

**LINDSAY PARK**  
213.225.7234  
lindsay.park@kidder.com  
LIC N° 02178041

**KIDDER.COM**

This information supplied herein is from sources we deem reliable. It is provided without any representation, warranty, or guarantee, expressed or implied as to its accuracy. Prospective Buyer or Tenant should conduct an independent investigation and verification of all matters deemed to be material, including, but not limited to, statements of income and expenses. Consult your attorney, accountant, or other professional advisor.

