



INDUSTRIAL FOR LEASE

Brand New Flex Units BUILT 2025

MAX GROVER, CCIM
616 890 7794
maxg@workwithMOXIE.com

workwithMOXIE.com

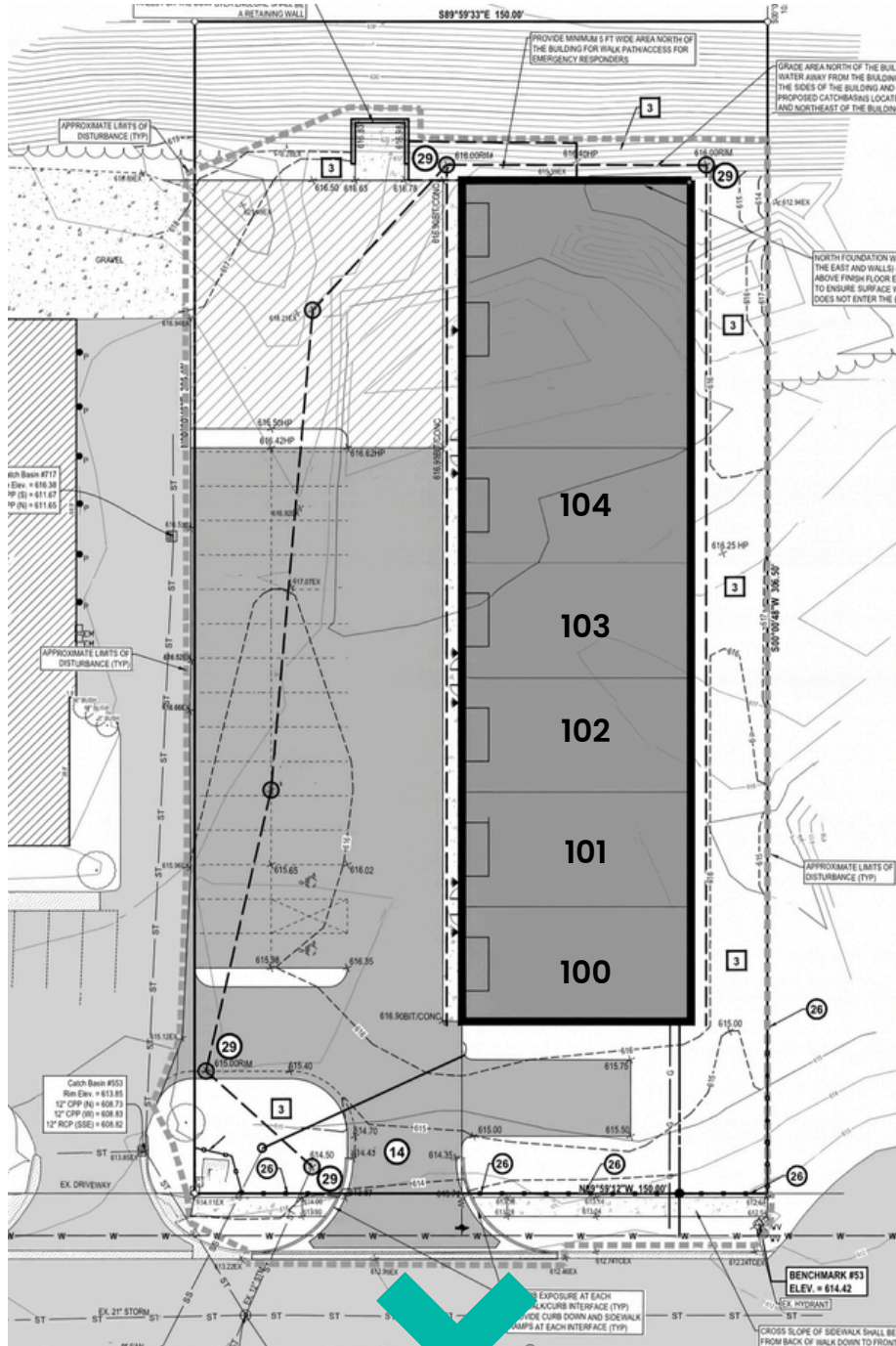


LISTING INFORMATION

1709 Dewent Drive Jenison, MI 49428



workwithMOXIE.com



Unit Rate
\$2,250
 Monthly

*All leases NNN

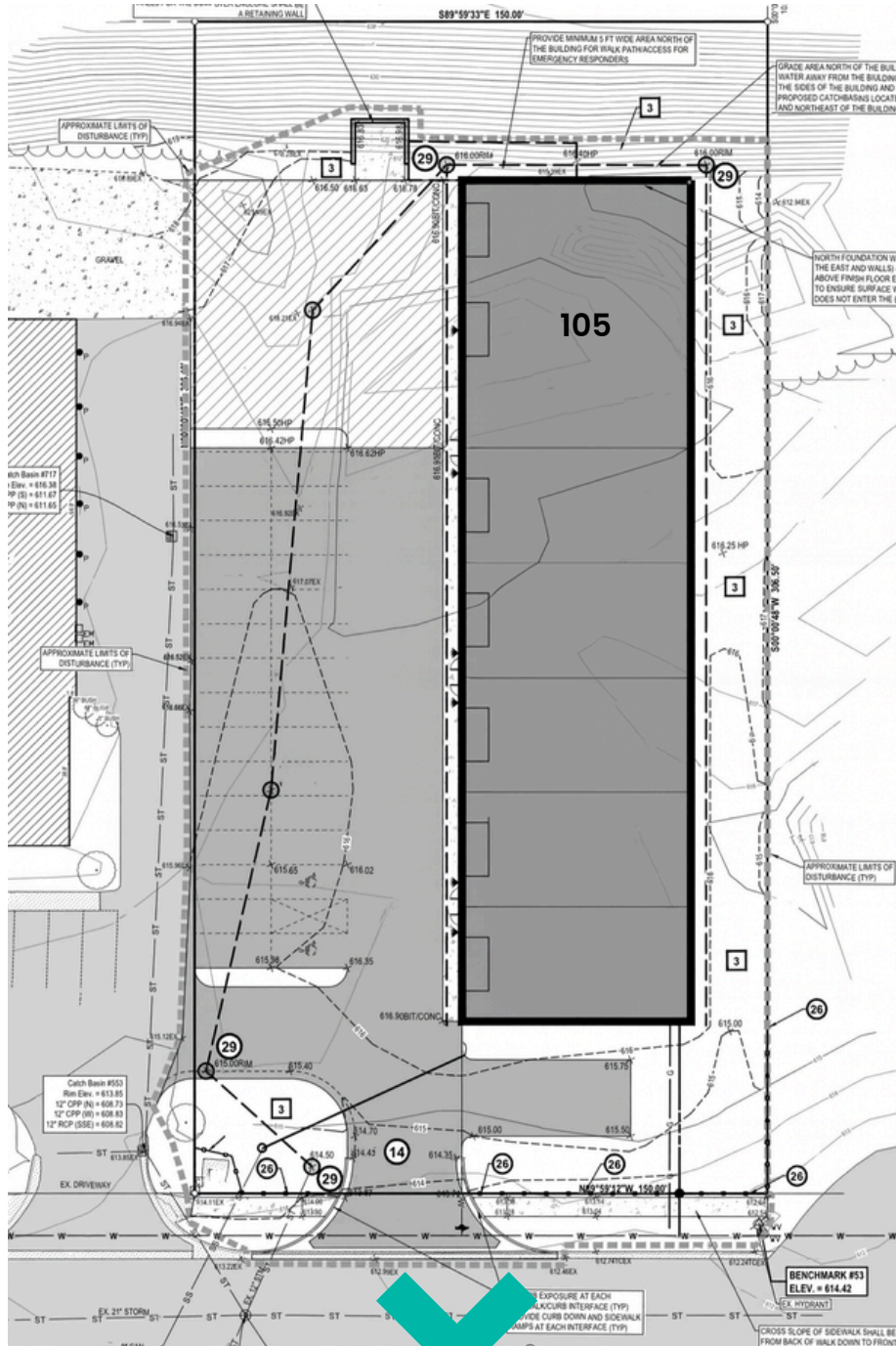
PRICING

Unit Size
1,800
 30'x 60'

Square Feet



workwithMOXIE.com



Unit Rate
\$4,750
 Monthly

*All leases NNN

PRICING

Unit Size
4,200
 30'x 60'

Square Feet



workwithMOXIE.com

PRIME LOCATION

Located in a bustling industrial node, the property benefits from proximity to active industrial neighbors like Dewent Redi-Mix, contractor supply companies, manufacturing facilities, warehousing operations, and logistics providers. The site offers excellent connectivity with quick access to Chicago Drive, I-196, and M-6, ensuring efficient transportation routes to Grand Rapids, Holland, and beyond.



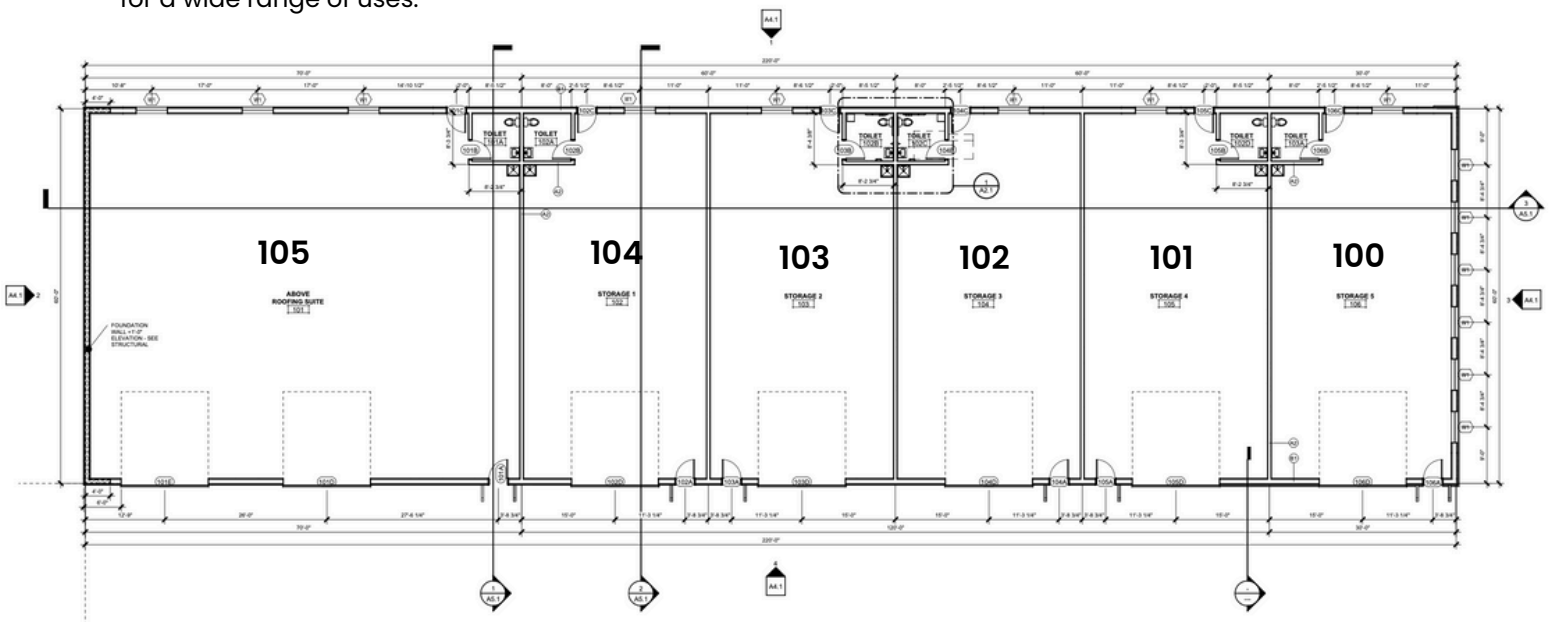
1 WEST ELEVATION
A.2 1/8" = 1'-0"

BUILDING HIGHLIGHTS

- ✗ 18' Clear Heights.
- ✗ 14' x 14' Overhead Doors
- ✗ Transom windows on overhead doors and warehouse
- ✗ Built to 2025 energy codes for enhanced energy savings

Versatile Layout

30'x60' floor plans with 18' ceilings and 14' overhead doors provide a rare, highly versatile flex space suitable for a wide range of uses.





IX

workwithMOXIE.com



workwithMOXIE.com



IX

workwithMOXIE.com



workwithMOXIE.com

CONTACT

MOXIE IS READY TO MOVE YOU FORWARD.



MOXIE

3437 Eastern Ave SE, Grand Rapids, MI 49508

MAX GROVER, CCIM

616 890 7794

maxg@workwithMOXIE.com

MOXIE Holdings, LLC DBA MOXIE Real Estate + Development (hereinafter referred to as "MOXIE") has prepared this Offering Memorandum (the "Memorandum") for informational purposes only. The information contained herein has been obtained from sources believed to be reliable; however, MOXIE makes no representations or warranties, express or implied, as to the accuracy or completeness of such information. All potential investors, tenants, buyers and/ or recipients of this Memorandum are hereby notified to conduct their own independent due diligence and verification of all information contained within. MOXIE shall not be liable for any errors or omissions in the information, or for any damages (whether direct, indirect, consequential, incidental, special, punitive, or otherwise) arising out of or in connection with the furnishing, use of, or reliance upon this Memorandum. This Memorandum is not intended to be, and should not be construed as, an offer to sell or a solicitation of an offer to buy any security or interest in any real estate. This Memorandum is presented in good faith and to the best of MOXIE's knowledge and understanding.