



LINLO PROPERTIES

# The Colonial Professional Center

4800 Linglestown Road, Suite 201  
Harrisburg, PA 17112



## Property Overview

Rental Rate:	\$20.95/SF/YR	Lot Size:	4.96 AC
Property Type:	Office	Rentable Building Area:	39,331 SF
Lease Type:	Gross (excl. in-suite janitorial)	Year Built/Renovated:	1987/2020
TI Allowance:	Available	Security:	Secured Access
Façade Signage:	Available	Parking:	4.0/1,000 SF

### Major Roadway(s) Access:

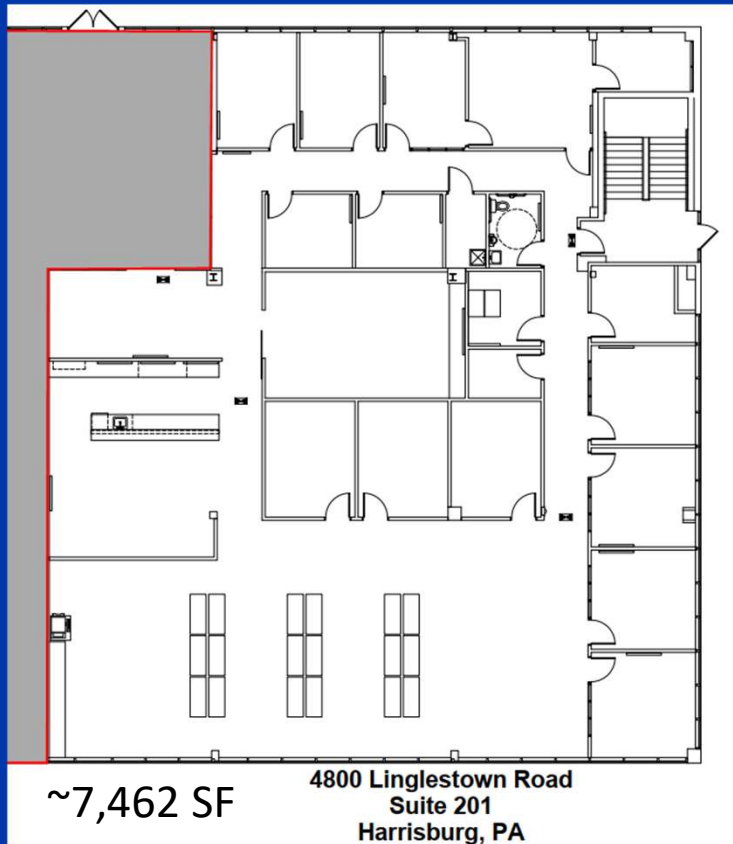
State Rt. 39, US Rts. 15 and 22, Interstates 81, 83, and 76 (PA Turnpike)

### Property Highlights:

Major renovations completed in 2020, excellent visibility from the main road, natural light, local ownership and property management, and conveniently located to major roadways.

# THANK YOU

Thank you for your interest in this office space and Linlo Properties. If you would like additional information on this property, please contact a member of our leasing team or visit our website at [www.linloproperties.com](http://www.linloproperties.com).



## Leasing Team Contacts:

**Tracey J. Tressler**

Sr. Director of Real Estate  
[ttressler@linloproperties.com](mailto:ttressler@linloproperties.com)  
(717) 307-2002 Ext. 16

**James R. Casey**

VP Leasing and Administration  
[jcasey@linloproperties.com](mailto:jcasey@linloproperties.com)  
(717) 307-2002 Ext. 19



# LINLO PROPERTIES

150 Corporate Center Drive; Suite 100  
Camp Hill, PA 17011  
(717) 307-2002