



# I-20 Business & Technology Park

500 Quitman Street  
Ruston, LA 71270

## SITE INFORMATION

**ACRES AVAILABLE:**

63.4 Acres

**PROPERTY TYPE:**

Manufacturing - Light Industrial

**TERRAIN:**

Gently Rolling

**SUB DIVIDABLE:**

Yes

**PRIOR/CURRENT USE:**

Agricultural

**OWNER:**

Judy Darby; Dud Hollard

**NEAREST MSA:**

Monroe

Population: 178,445

Distance: 11.4 miles

Shreveport/Bossier

Population: 440,933

Distance: 34.7 miles

**COORDINATES:**

32.537929, -92.609565

## UTILITIES

**ELECTRICITY:**

City of Ruston

**NATURAL GAS:**

CenterPoint Energy

**WATER:**

City of Ruston

**SEWER:**

City of Ruston

**TELECOM:**

AT&T

**FIBER OPTIC:**

AT&T



## TRANSPORTATION LOGISTICS

**INTERSTATE:**

I-20

Distance: 2.1 miles

**HIGHWAY:**

US-80

Distance: 0.1 mile

**RAIL:**

Kansas City Southern Railroad

Distance: 0.3 mile

**AIRPORT:**

Monroe Regional Airport (MLU)

Distance: 35.4 miles

**PORT:**

Greater Ouachita Parish

Port Commission

Distance: 32.3 miles

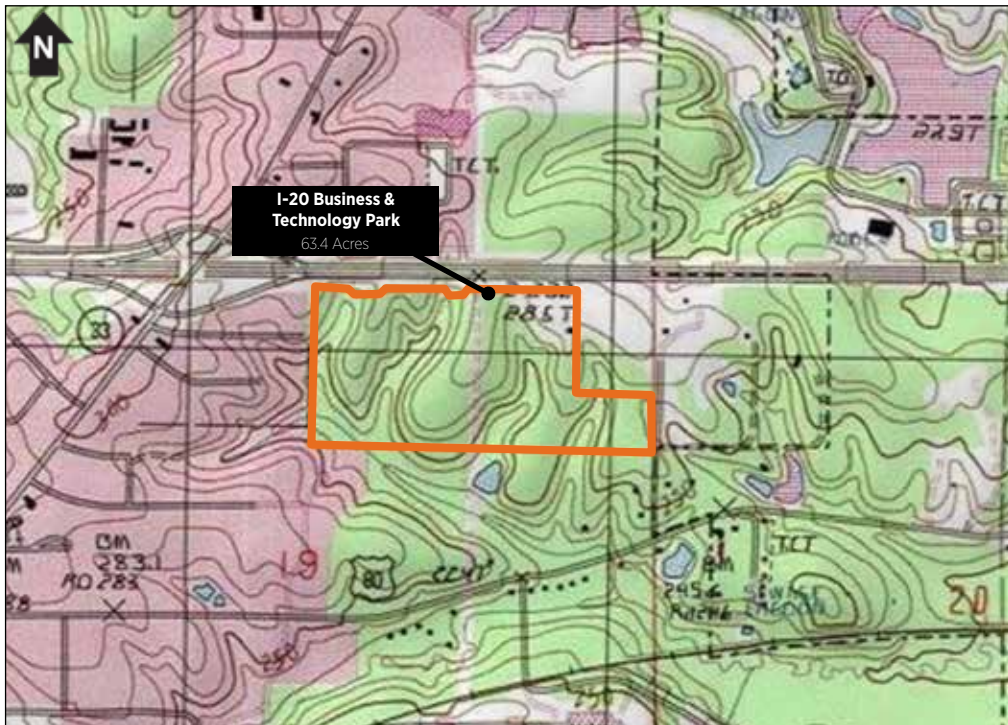


Site Located in  
Lincoln Parish

**FIND OUT MORE: OpportunityLouisiana.com**  
**800.450.8115**

# I-20 Business & Technology Park

500 Quitman Street  
Ruston, LA 71270



FIND OUT MORE: [OpportunityLouisiana.com](http://OpportunityLouisiana.com)  
800.450.8115