



500-502 E 167th St

500-502 E 167th St, Bronx, NY 10456



Fatema 'Faye' Samim

Douglas Elliman

575 Madison Ave, New York, NY 10022

faye.samim@elliman.com

(212) 735-1081

500-502 E 167th St

\$1,399,000

Welcome to an exceptional investment opportunity in the heart of the Bronx, brought to you by Douglas Elliman Commercial LLC. This offering features two adjacent mixed-use parcels, 500 and 502, each with a ground-level commercial space and a first floor suitable for residential or office use, along with a shared basement. Ideally sold together, these properties present a unique opportunity for investors looking to capitalize on a prime real estate in a thriving location.

This approximately 5,000 SF space includes two vacant rooms on the first level that can be used as offices or residential units, two separate retail spaces currently occupied, and a vacant shared basement ideal for storage. The spaces can potentially be merged into one, if needed.

Taxes: \$14,852...

- Two Parcel Mixed Use Buildings for Sale



Price:	\$1,399,000
Property Type:	Industrial
Property Subtype:	Warehouse
Building Class:	C
Sale Type:	Investment
Lot Size:	0.06 AC
Rentable Building Area:	4,953 SF
Rentable Building Area:	4,953 SF
Sale Conditions:	Redevelopment Project
No. Stories:	3
Year Built:	1931
Tenancy:	Multiple
Parking Ratio:	0/1,000 SF
No. Drive In / Grade-Level Doors:	2
Zoning Description:	M11R72

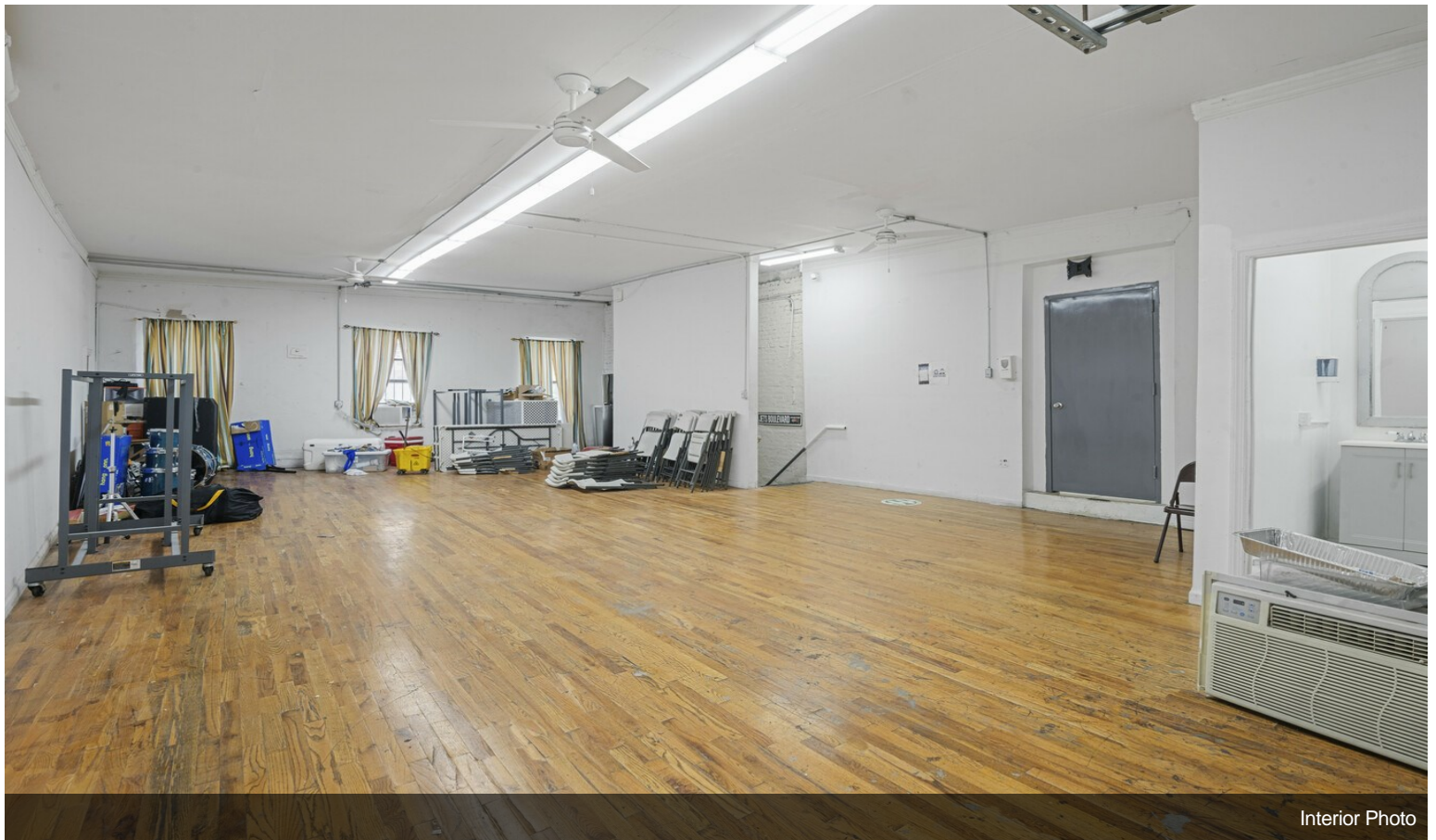


500-502 E 167th St, Bronx, NY 10456

Property Photos



Interior Photo

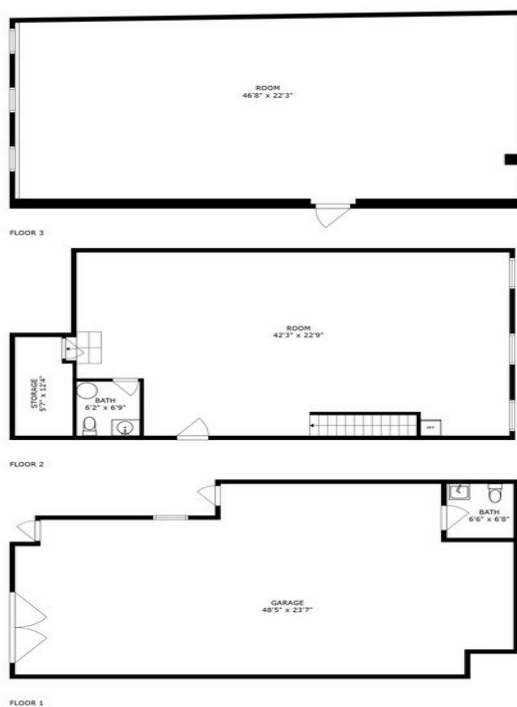


Interior Photo

Property Photos



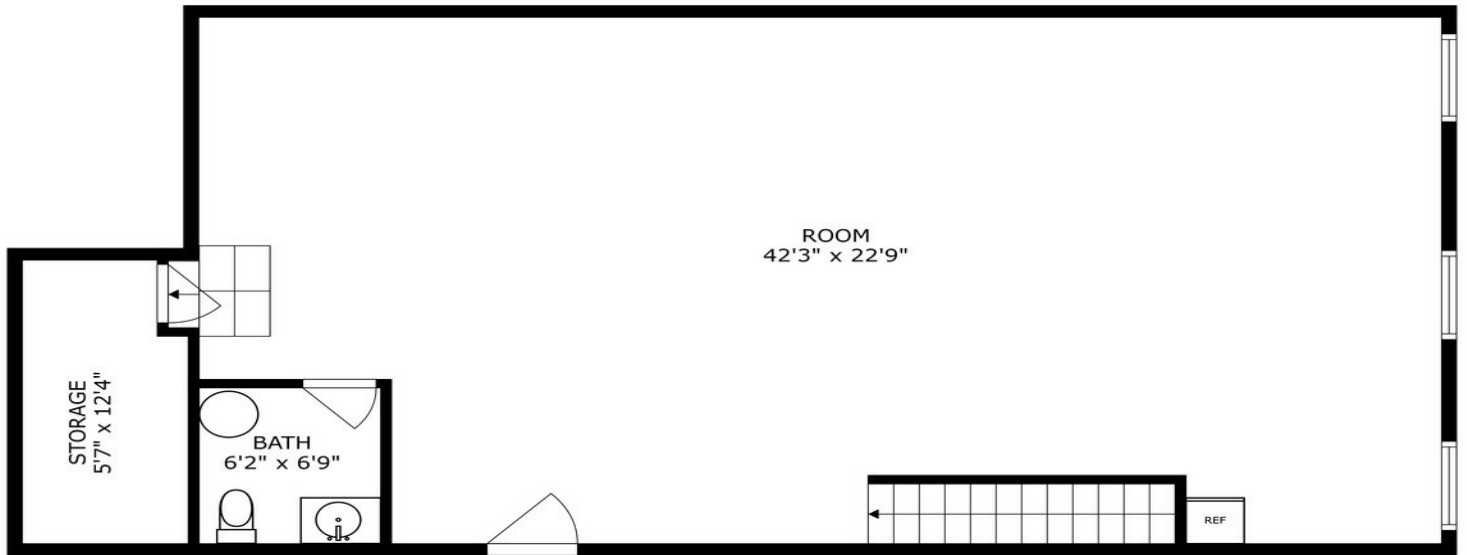
Interior Photo



SIZES AND DIMENSIONS ARE APPROXIMATE, ACTUAL MAY VARY.

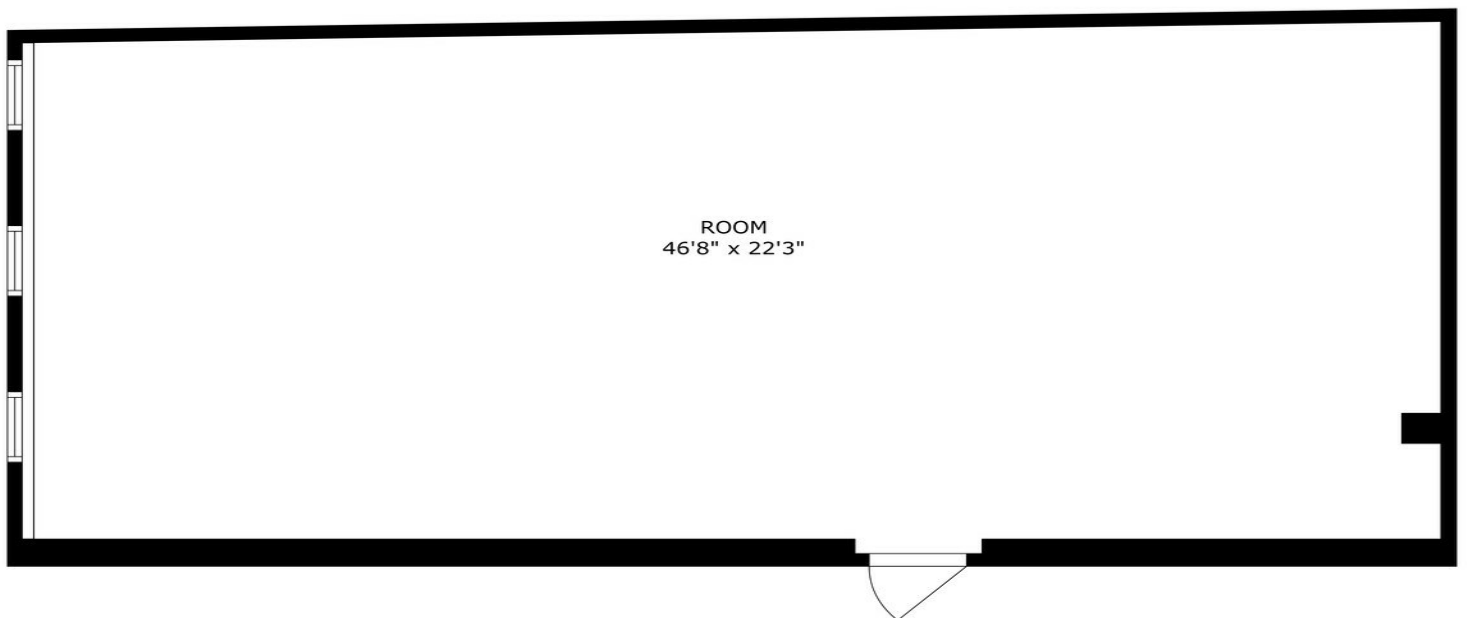
Floor Plan

Property Photos



SIZES AND DIMENSIONS ARE APPROXIMATE, ACTUAL MAY VARY.

Floor Plan



SIZES AND DIMENSIONS ARE APPROXIMATE, ACTUAL MAY VARY.

Floor Plan