

CAPITAL

Commercial Real Estate Group

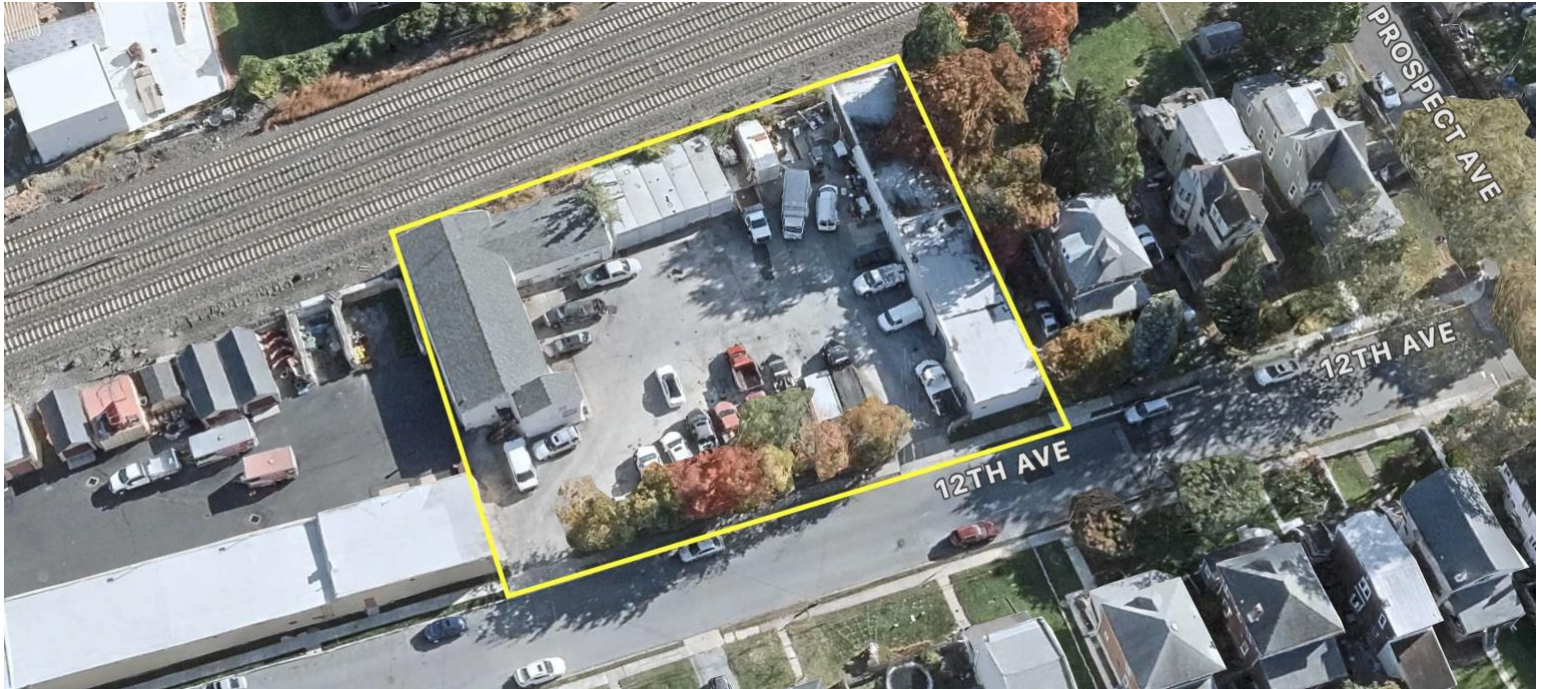
610-359-9700

www.CapitalComRe.com

AVAILABLE FOR LEASE

Multi-Tenant Industrial Building

Location: 800 12th Ave, Prospect Park, PA 19076



PROPERTY HIGHLIGHTS:

- ✓ 0.57-acre corner lot with 3 buildings totaling +-6,000 SF.
- ✓ Garage-style bays, office/shop space, and vehicle storage
- ✓ Fully enclosed site with gated entry and outdoor storage.
- ✓ Surrounded by dense residential and local traffic drivers.
- ✓ Minutes to I-95, Philadelphia Airport, and regional transit.



LEASE PRICE: \$1,590.00/mo + Utilities



Christopher Armas
561-945-2346
Armas888@gmail.com

AGENT CONTACT

www.capitalcomre.com

Contact Me For More Off-Market Opportunities

3748 West Chester Pike Newtown Square, PA 19073 * Phone: 561-945-2346 * Fax: 610-359-9750

The information above has been obtained from sources believed reliable. While we do not doubt its accuracy, we have not verified it and make no guarantee, warranty or representation about it. It is Buyer/Lessee responsibility to independently confirm its accuracy and completeness. This is not intended to solicit another Broker's listing.

CAPITAL

Commercial Real Estate Group

610-359-9700

www.CapitalComRe.com

AVAILABLE FOR LEASE

Multi-Tenant Industrial Building

Location: 800 12th Ave, Prospect Park, PA 19076



LEASE PRICE: \$1,590.00/mo + Utilities



Christopher Armas

561-945-2346

Armas888@gmail.com

AGENT CONTACT

www.capitalcomre.com

Contact Me For More Off-Market Opportunities

3748 West Chester Pike Newtown Square, PA 19073 * Phone: 561-945-2346 * Fax: 610-359-9750

The information above has been obtained from sources believed reliable. While we do not doubt its accuracy, we have not verified it and make no guarantee, warranty or representation about it. It is Buyer/Lessee responsibility to independently confirm its accuracy and completeness. This is not intended to solicit another Broker's listing.