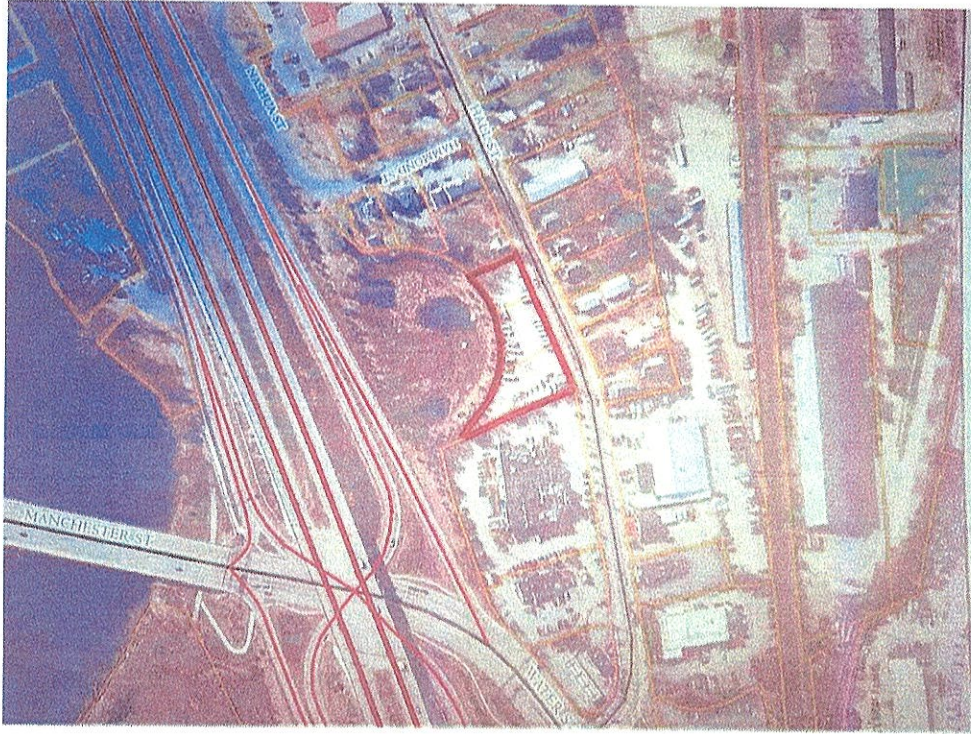


DEVELOPMENT SITE FOR SALE



31-35-39 Hall Street
Concord, NH

PREMIERE PROPERTIES, INC.

255 SO. MAIN ST.

CONCORD, NH 03301

603-224-3373

The information contained herein is from sources deemed reliable, but is not guaranteed by Premiere Properties, Inc. (PPI). PPI assumes no responsibility for matters legal in character, nor does it render an opinion as to the title, which is assumed to be good. All data is subject to change of price, omissions, error, or other conditions or withdrawals without notice. PPI is the acting Seller's/Lessor's agent in the marketing of this property.

**31-35-39 Hall St
Concord, NH**

LOCATION: Just off I-93 at Exit 13. Site abuts Granite State College. Neighbors include Burger King, KFC, Common Man, CVS, and New England Kenworth.

LAND AREA: .85 Acres +/- acres

FRONTAGE: 300 +/- Feet

ZONING: GWP-Gateway Performance (retail and other commercial uses)

UTILITIES: Municipal water and sewer
Natural Gas

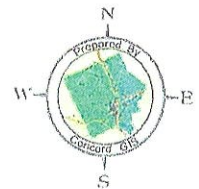
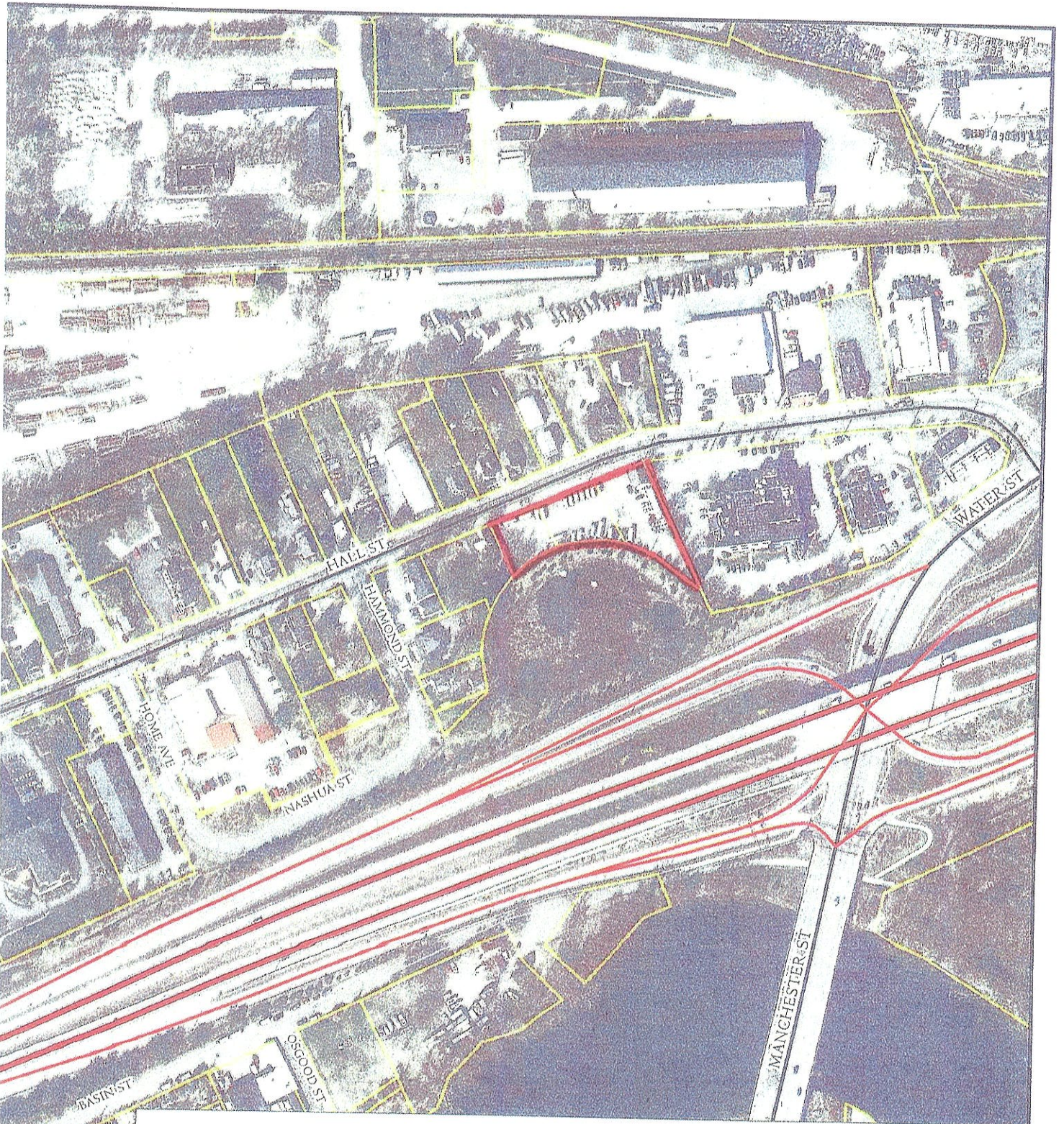
CURB CUTS: Three (3) current

PREVIOUS USE: Auto and Truck Sales

PARKING: The site is almost entirely paved.

DEED: Bk 2332 Pg 0234
Bk 1001 Pg 1262
Bk 3119 Pg 0983

SALE PRICE: \$1,200,000.00



These maps were prepared for use by the City of Concord. The City makes no representations or guarantees of their accuracy or suitability for use other than by the City. Users other than the City, do so at their own risk. Copyright © 2017 City of Concord, NH

Printed on: 9/13/2017

31-39 Hall St Concord NH

st Terrill Park

William A. Healy Memorial Pa

EXIT 13

93

The Common Man

Water St

Hall St

New England Kenworth • Concord

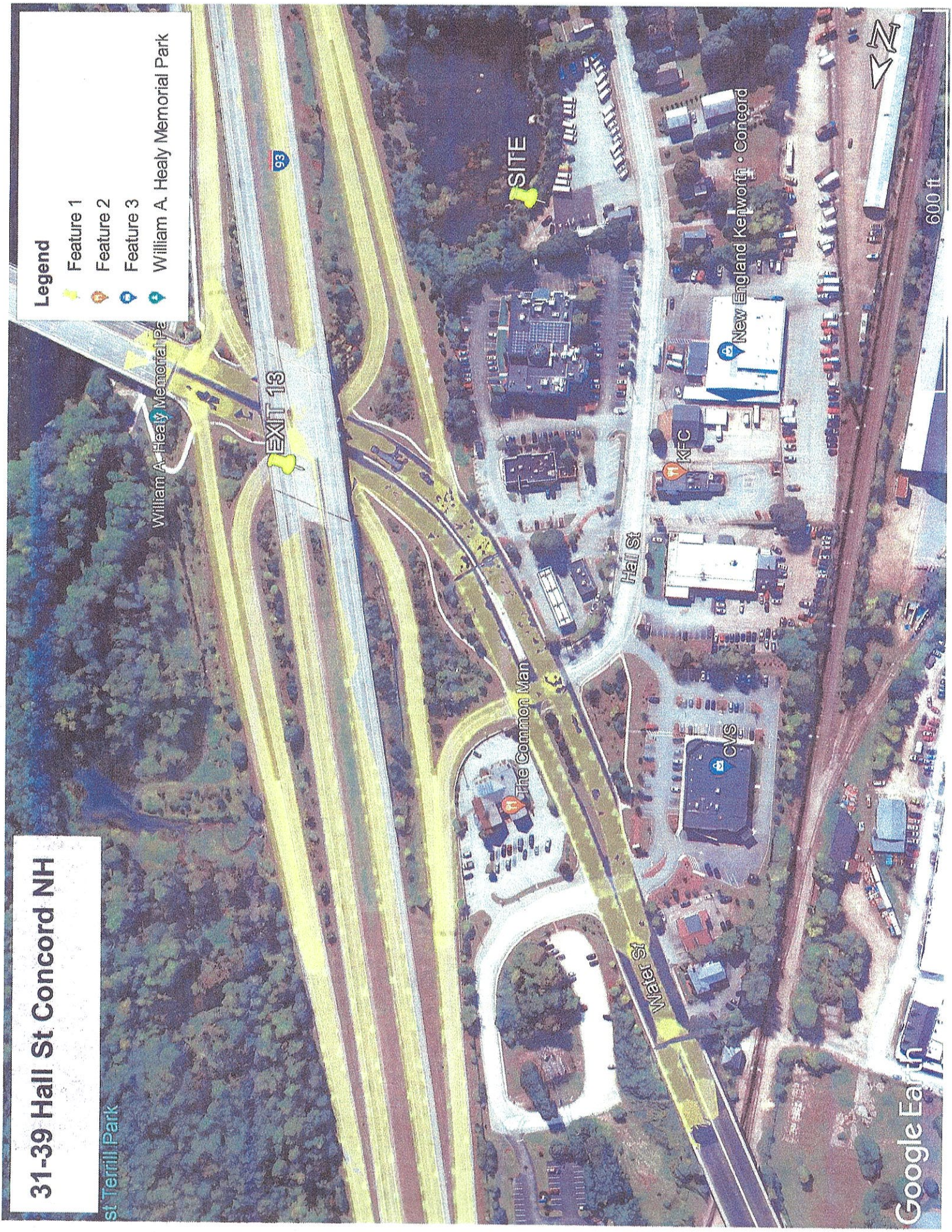
Legend

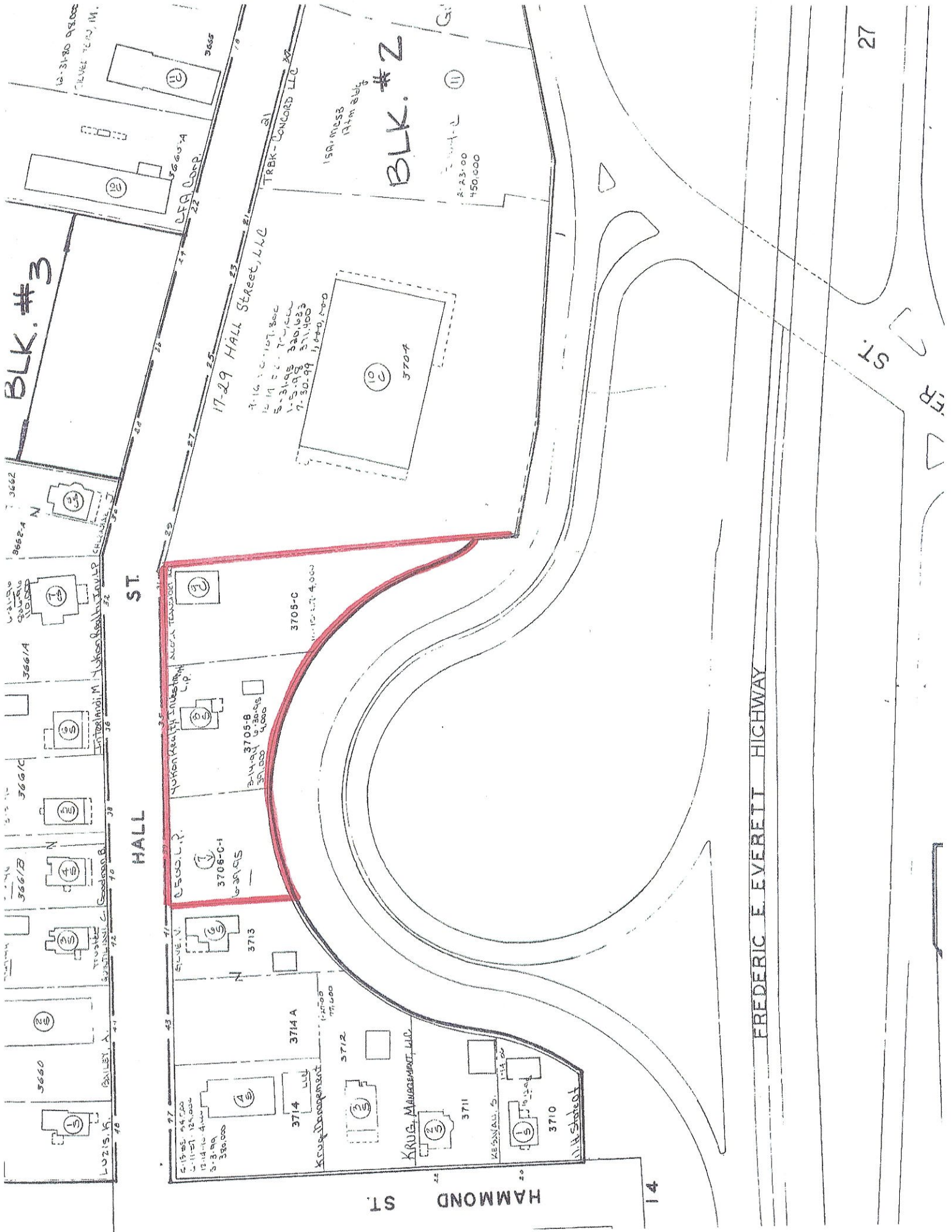
- Feature 1
- Feature 2
- Feature 3
- William A. Healy Memorial Park

SITE

Google Earth

600 ft





BLK. #3

BLK. #2

17-29 HALL STREET, LLC

HALL ST.

HALL ST.

HAMMOND ST.

FREDERIC E. EVERETT HIGHWAY

27

FR ST.

14

3662
3662-A
3662-B
3662-C
3662-D
3662-E
3662-F
3662-G
3662-H
3662-I
3662-J
3662-K
3662-L
3662-M
3662-N
3662-O
3662-P
3662-Q
3662-R
3662-S
3662-T
3662-U
3662-V
3662-W
3662-X
3662-Y
3662-Z

3705-C
3705-B
3705-A
3704
3703
3702
3701
3700

TRBK CONCORD LLC
150,000 sq. ft. approx.
12,141 sq. ft. approx.
5,314 sq. ft. approx.
1,519 sq. ft. approx.
7,308 sq. ft. approx.
1,440 sq. ft. approx.

KRUG, Management, LLC
4,230,000
150,000

FR ST.
27