



FOR LEASE: 1,435 SF – 37,306 SF

800 N. King Street

WILMINGTON, DE 19801

PROPERTY HIGHLIGHTS

- Availabilities:
 - Floor 1: 1,436 SF
 - Floor 4: 4,000 to 18,580 (full floor)
 - Floor 5: 4,000 to 18,580 (full floor)
- On-site parking and security
- Building signage available
- Direct neighbors with the U.S. Bankruptcy Court and the United States District Court for the District of Delaware
- Less than one mile from I-95
- Within walking distance to Amtrak's Wilmington Station
- Just off Rodney Square with easy access to the Market Street retail corridor



For information, please contact:

Brett DiClemente

Associate Director

t 302-472-8035

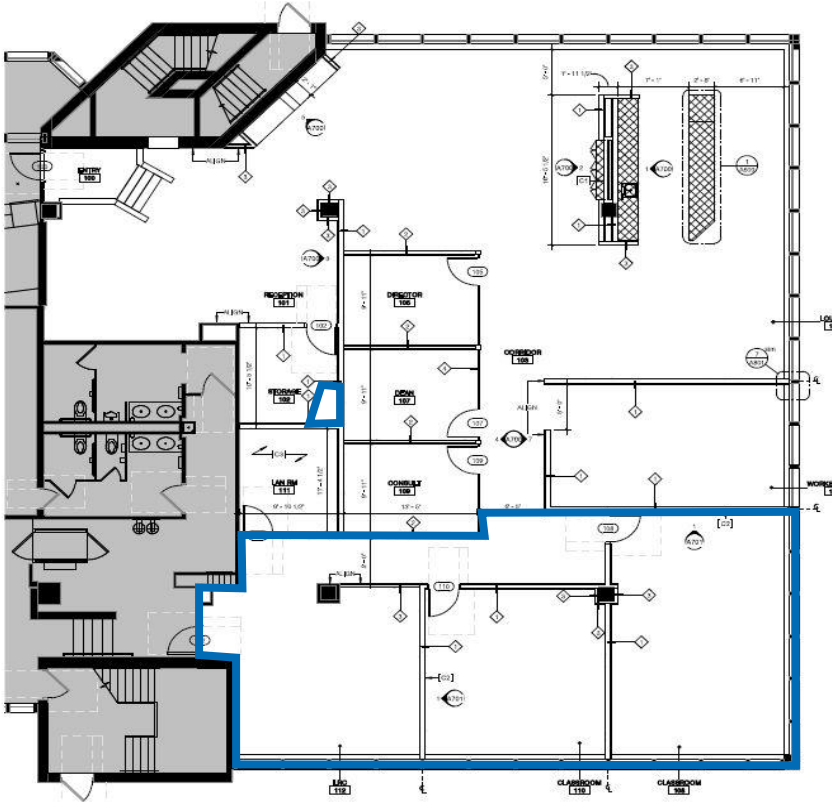
Brett.diclemente@nrmk.com

1521 Concord Pike
Suite 301
Wilmington, DE 19803
t 302-655-0600

NEWMARK

FOR LEASE: 1,435 SF – 37,306 SF

800 N. King Street

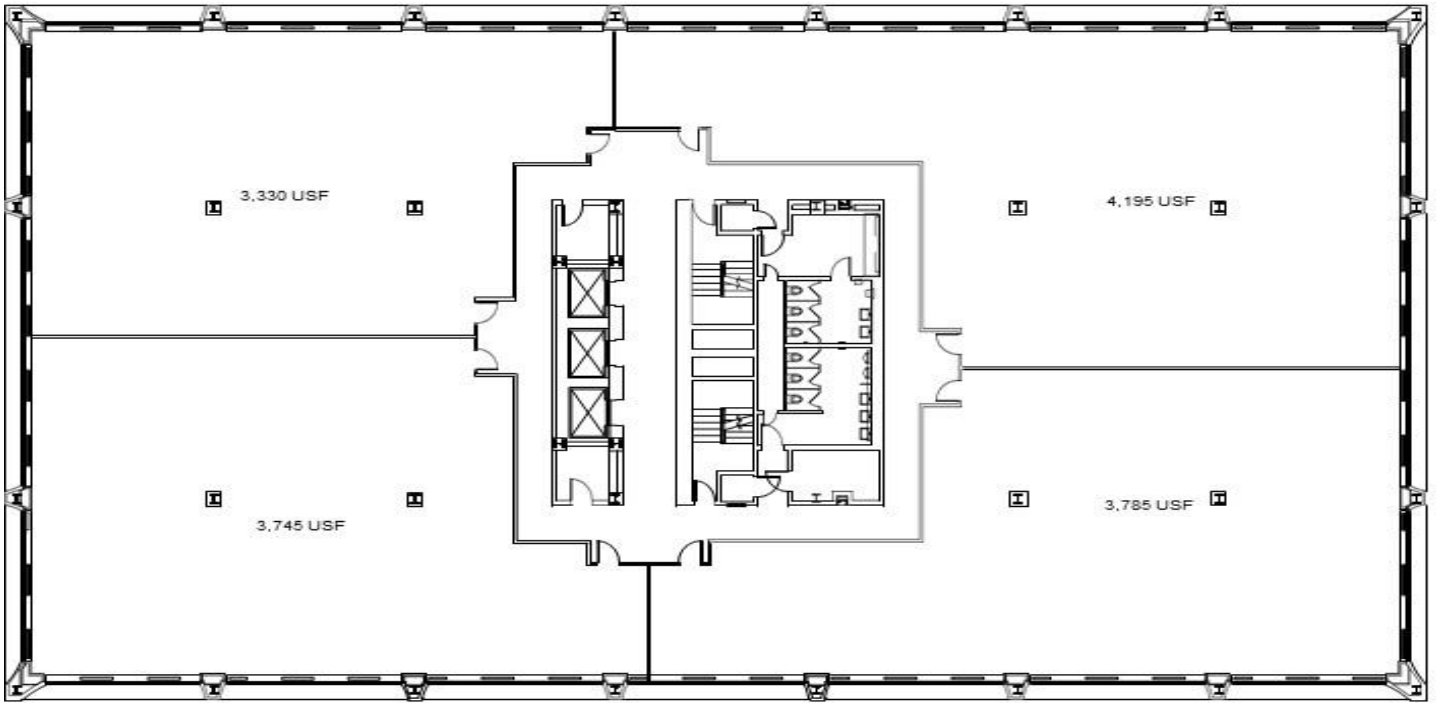


1ST FLOOR AVAILABILITY: 1,436 SF

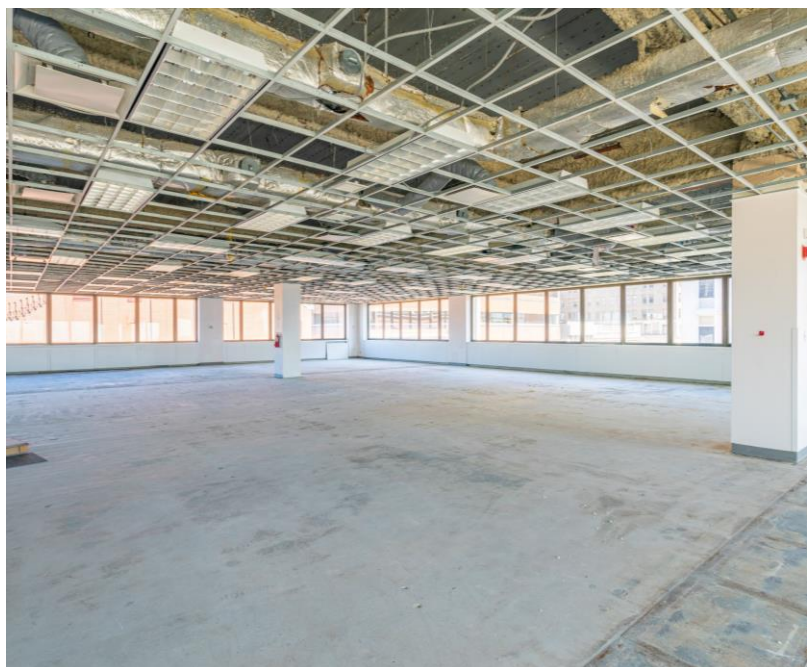


FOR LEASE: 1,435 SF – 37,306 SF

800 N. King Street



4TH & 5TH FLOORS: UP to 18,580 SF – FULL FLOORS AVAILABLE (DIVISIBLE)



FOR LEASE: 1,435 SF – 37,306 SF

800 N. King Street



800 N. KING STREET IS IDEALLY LOCATED NEXT TO ALL US FEDERAL COURTS IN THE CITY OF WILMINGTON AND WITHIN 2 BLOCKS FROM ALL DELAWARE STATE AND NEW CASTLE COUNTY COURTS.