



# For sublease

3232 S Fair Lane, Tempe, AZ

±5,320 RSF

Lease Expiration: 12/31/2026

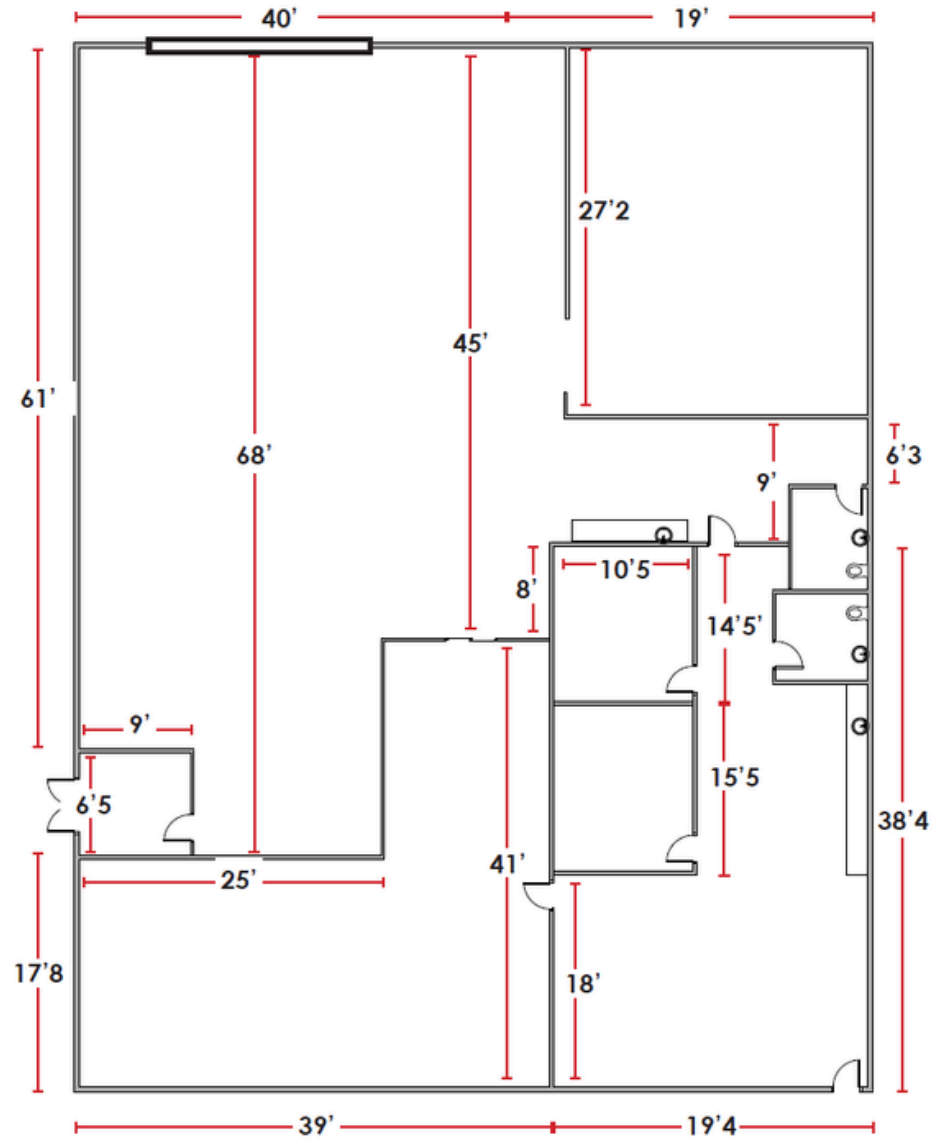
# Property Highlights

- ±5,320 sf available
- Zoning: GID, City of Tempe
- 100% A/C Cooled Warehouses
- Secured Parking
- LED Lighting
- Near Sky Harbor International Airport
- New Flooring & Paint in Interior Units
- 10' x 10" Roll Up Doors

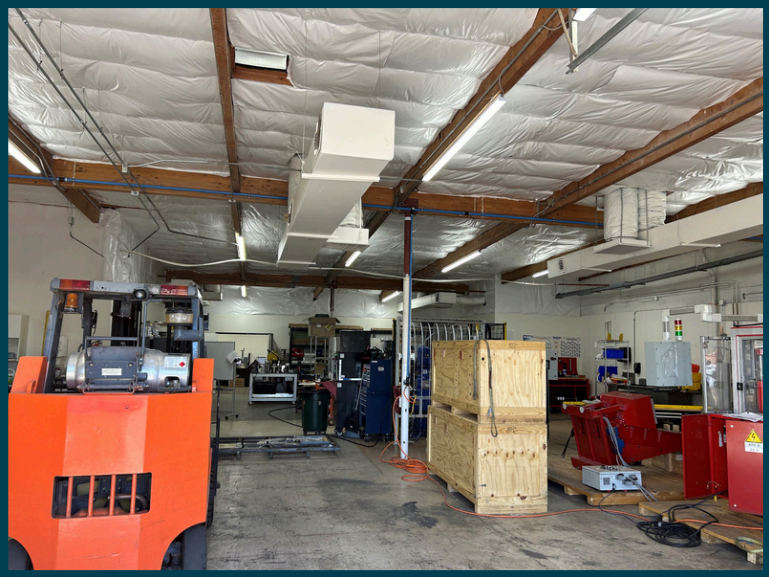


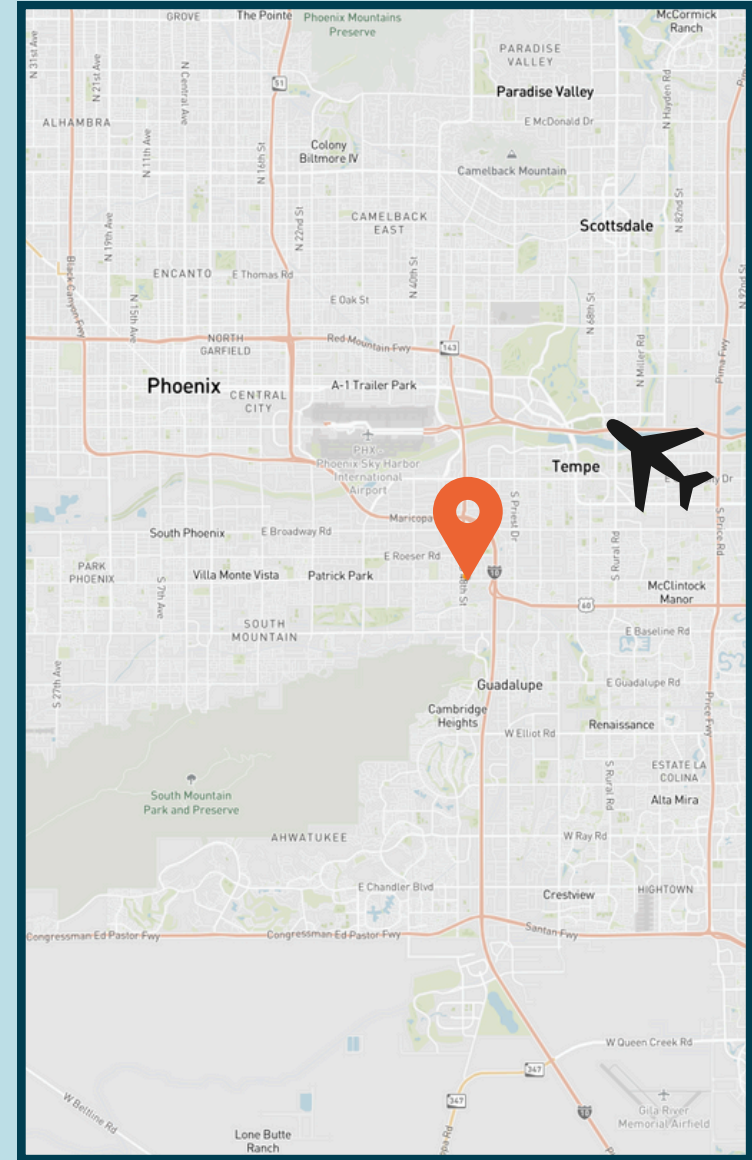
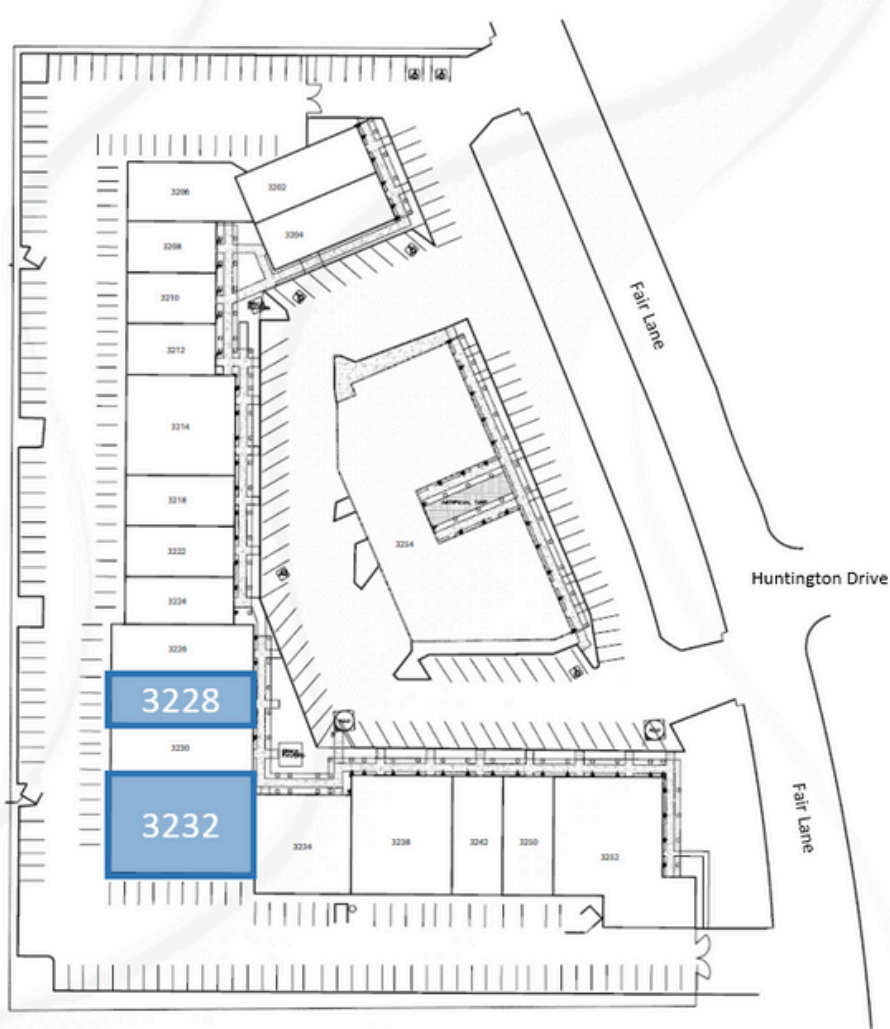
# Floor Plan

±5,320 SF



# 3232 S Fair Lane Photos





Steve Sayre  
Sr. Managing Director  
602 999 7720  
Steve.Sayre@jll.com