

# Medical Office For Lease

111 Union Valley Rd | Monroe | New Jersey



## DEMOGRAPHICS

Radius	1 Miles	3 Miles	5 Miles
Population	7,610	29,210	78,051
Households	4,202	13,925	31,036
Average House-hold Income	\$105,593	\$117,752	\$133,579

## MEDICAL OFFICE FOR LEASE:

Suite 201– A– 2,480 SF

**Medical - \$21.00 NNN/SF**

**READY TO GO  
PHYSICAL THERAPY UNIT!**

## FEATURES

- Located in the Medical Hub of a rapidly growing area
- Fully stabilized medical arts building
- Site has ample parking and protected portico patient drop off area
- Excellent nearby transportation options
- Located near Robert Wood Johnson, St. Peters & Princeton Medical Center Office Hub

Listed By: Anita Singh, *Executive Director, Medical Division*

Contact: 📞 (908) 295-9640 ✉ anita.singh@cbmoves.com



**COLDWELL  
BANKER  
COMMERCIAL**

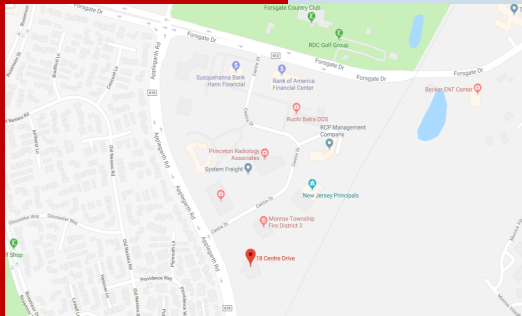
**NRT**



# Medical Office For Lease

111 Union Valley Rd | Monroe | New Jersey

## Photos



Listed By: Anita Singh, *Executive Director, Medical Division*

Contact:  (908) 295-9640  [anita.singh@cbmoves.com](mailto:anita.singh@cbmoves.com)



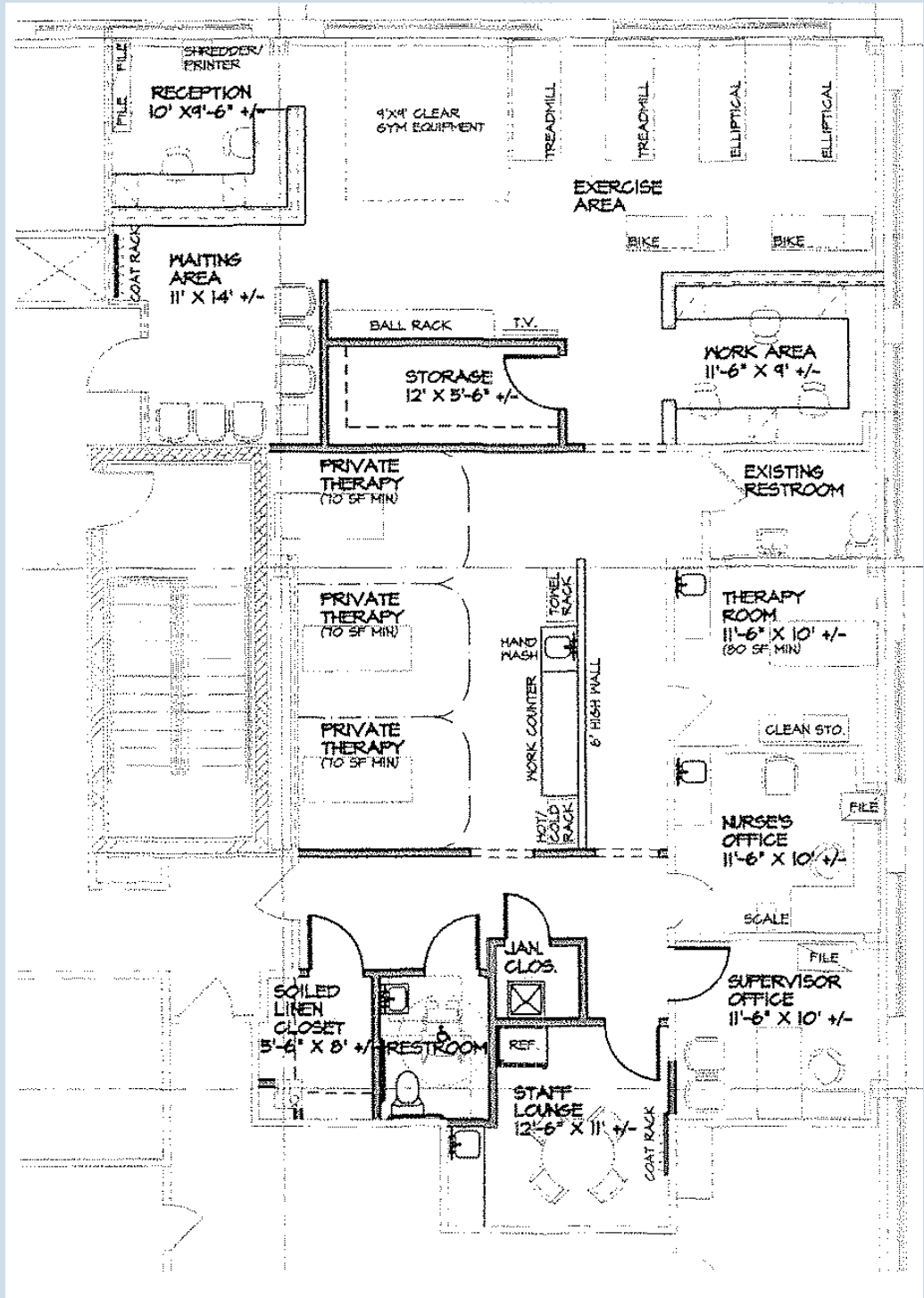
**COLDWELL  
BANKER  
COMMERCIAL**

**NRT**

# Medical Office For Lease

111 Union Valley Rd | Monroe | New Jersey

## Floor Plans



Listed By: Anita Singh, *Executive Director, Medical Division*

Contact:  (908) 295-9640  [anita.singh@cbmoves.com](mailto:anita.singh@cbmoves.com)



**COLDWELL  
BANKER  
COMMERCIAL**

**NRT**