

# 320 ROCBAAR DR Romeoville, IL

free standing industrial building

MATT GARLAND  
(312) 339-9015  
mgarland@cawleycre.com

ANDREW MALETICH, SIOR  
(630) 729-7942  
amaletich@cawleycre.com

DUSTIN ALBERS  
(773) 930-6306  
dalbers@cawleycre.com

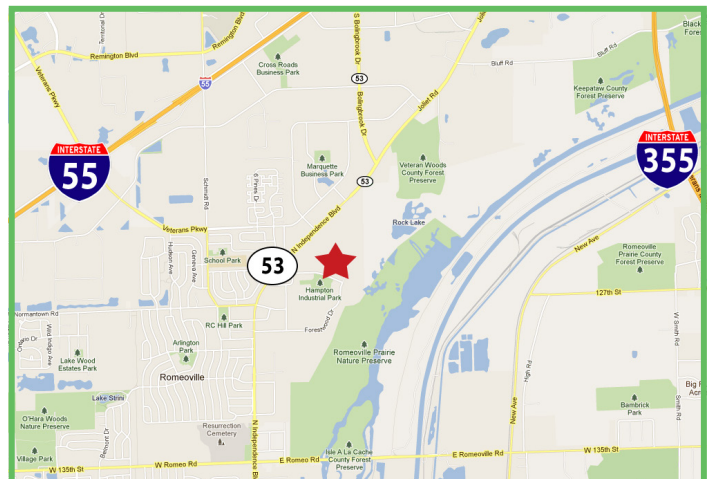


## details

<b>Total Building:</b>	7,436 SF
<b>Office Space:</b>	To Be Constructed
<b>Ceiling Height:</b>	16' Clear
<b>Power:</b>	200 Amp / 480 Volt / 3 Phase
<b>Year Built:</b>	1994
<b>Lot Size:</b>	0.58 Acres
<b>Construction:</b>	Masonry
<b>Column Spacing:</b>	27' x 27'
<b>Loading:</b>	One (1) Exterior Loading Dock Two (2) Drive in Doors

## pricing

<b>Sale Price:</b>	Subject to Offer
<b>R.E. Taxes:</b>	\$15,197 (2023 payable 2024)



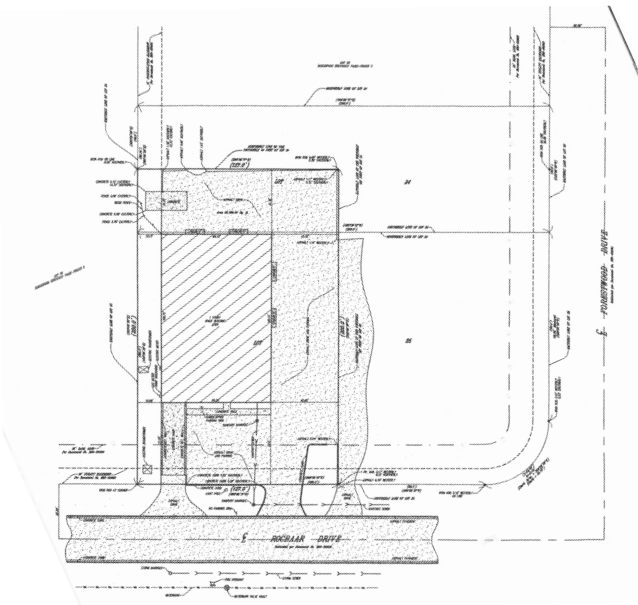
# 320 ROCBAAR DR Romeoville, IL

free standing industrial building

MATT GARLAND  
(312) 339-9015  
mgarland@cawleycre.com

ANDREW MALETICH, SIOR  
(630) 729-7942  
amaletich@cawleycre.com

DUSTIN ALBERS  
(773) 930-6306  
dalbers@cawleycre.com



- ✓ Rare free-standing building
- ✓ Located in the I-55 corridor
- ✓ Great access to I-55 and I-355 from Joliet Road or Route 53
- ✓ T-8 Lighting