

OFFICE SPACE FOR LEASE

UP TO ±45,228 SF
OFFICE AVAILABLE

9127 JAMAICA STREET

ENGLEWOOD, COLORADO 80112



PROPERTY FEATURES

AVAILABLE SF	Suite 100	±25,200 SF
	Suite 250	±8,332 SF
	Suite 300	±11,696 SF
	TOTAL	±45,228 SF

COMMENTS

- Walking distance to Lincoln Station Light Rail
- Close proximity to Park Meadows Mall, Meridian and Inverness Golf Clubs, & Centennial Regional Airport
- Located at the confluence of I-25 and E-470
- 4 : 1,000 Surface parking
- 10' Ceilings throughout
- Large efficient floor plate
- LEED Silver: Energy Star Building
- Electrical and HVAC capacity to support today's tenant demand
- State-of-the-art telephone and data connectivity

LEASE RATE \$26.00/SF Full Service Gross



JR BITZER

+1 303 501 8778

jr.bitzer@lee-associates.com

W. RYAN STOUT

+1 303 886 3327

ryan.stout@cushwake.com

ZACH WILLIAMS

+1 303 813 6474

zach.williams@cushwake.com

CAITLIN ELLENSON

+1 303 312 1914

caitlin.ellenson@cushwake.com

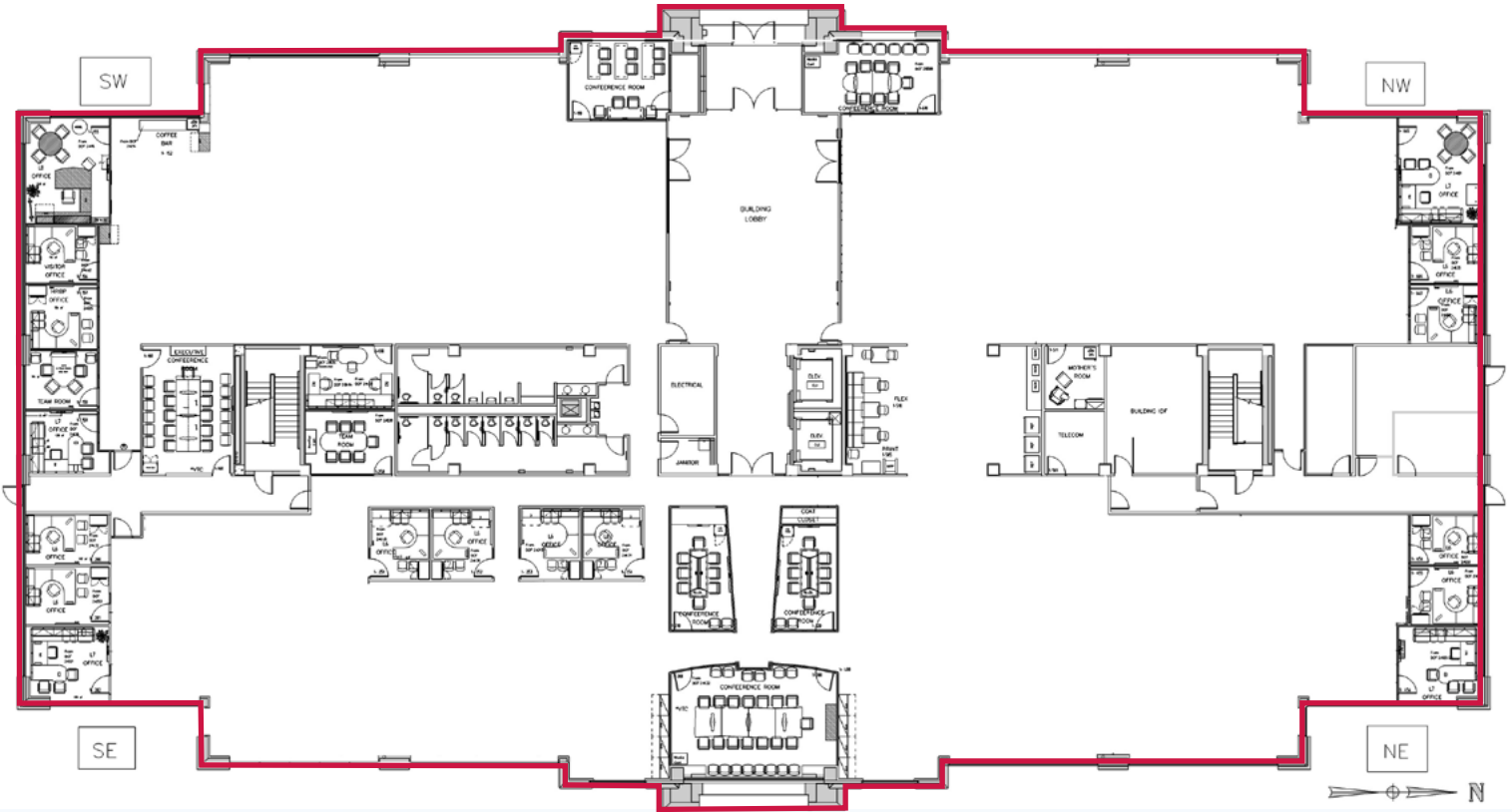


OFFICE SPACE FOR LEASE

9127 JAMAICA STREET
ENGLEWOOD, COLORADO 80112



FIRST FLOOR: 25,200 SF AVAILABLE



**Hypothetical layouts*



OFFICE SPACE FOR LEASE

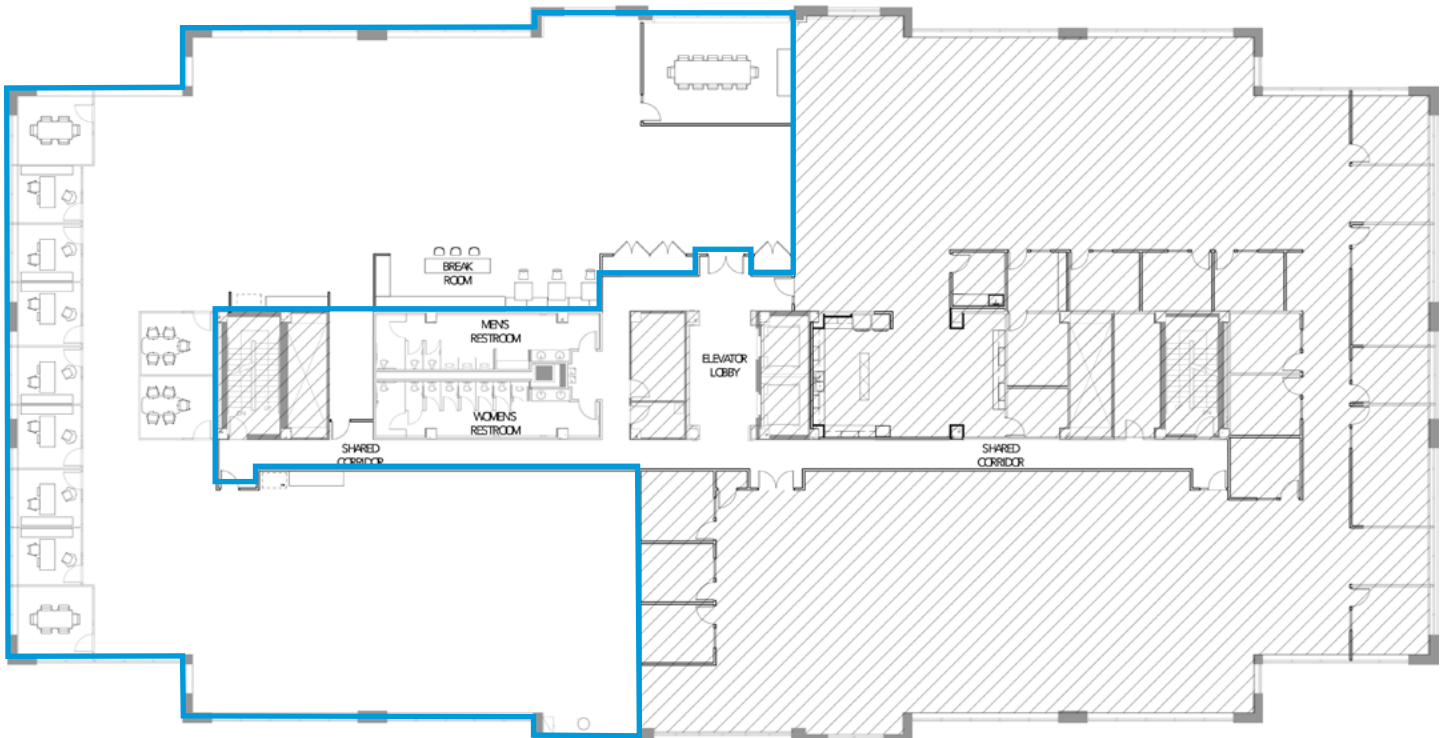
9127 JAMAICA STREET
ENGLEWOOD, COLORADO 80112



2ND FLOOR: 8,332 SF AVAILABLE



THIRD FLOOR: 11,696 SF AVAILABLE

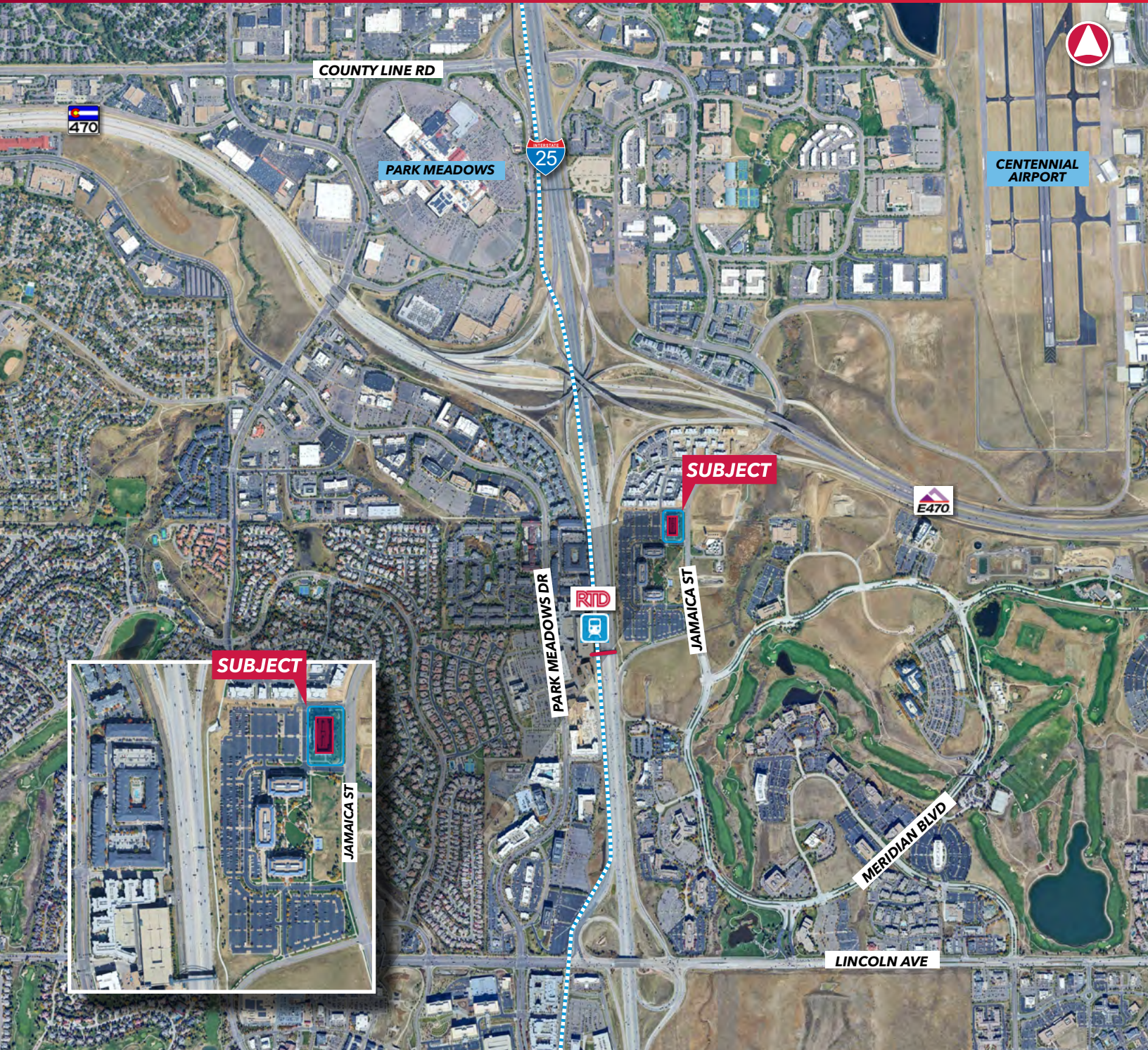


OFFICE SPACE FOR LEASE

UP TO ±45,228 SF
OFFICE AVAILABLE

9127 JAMAICA STREET

ENGLEWOOD, COLORADO 80112



JR BITZER

+1 303 501 8778

jr.bitzer@lee-associates.com

W. RYAN STOUT

+1 303 886 3327

ryan.stout@cushwake.com

ZACH WILLIAMS

+1 303 813 6474

zach.williams@cushwake.com

CAITLIN ELLENSON

+1 303 312 1914

caitlin.ellenson@cushwake.com

