

**16557 GALWAY PARK
HUDSON, FL 34677**



FOR LEASE NEWLY BUILT INDUSTRIAL WAREHOUSE SPACE

Property Summary

Be the FIRST!!!

Brand-New Warehouse with Offices for Lease

This newly constructed warehouse offers a perfect blend of modern design and functional efficiency, making it an ideal solution for businesses seeking a versatile and well-connected space. Strategically positioned in Hudson, FL, with seamless access to major highways and public transportation.

- **Built for Efficiency:** Includes a high-capacity loading dock for streamlined logistics and operations.
- **Office Spaces:** Designed for productivity, these offices provide the perfect environment for managing operations, paperwork, and meetings.
- **Spacious Design:** Generous warehouse floor space to accommodate storage, distribution, or manufacturing needs.

Located in a rapidly growing area with a strong sense of community, home to numerous local and national businesses.

PROPERTY FEATURES



Phase 3
electric



Warehouse Space



Office Space



Roll Up Doors & Drive in
Dock



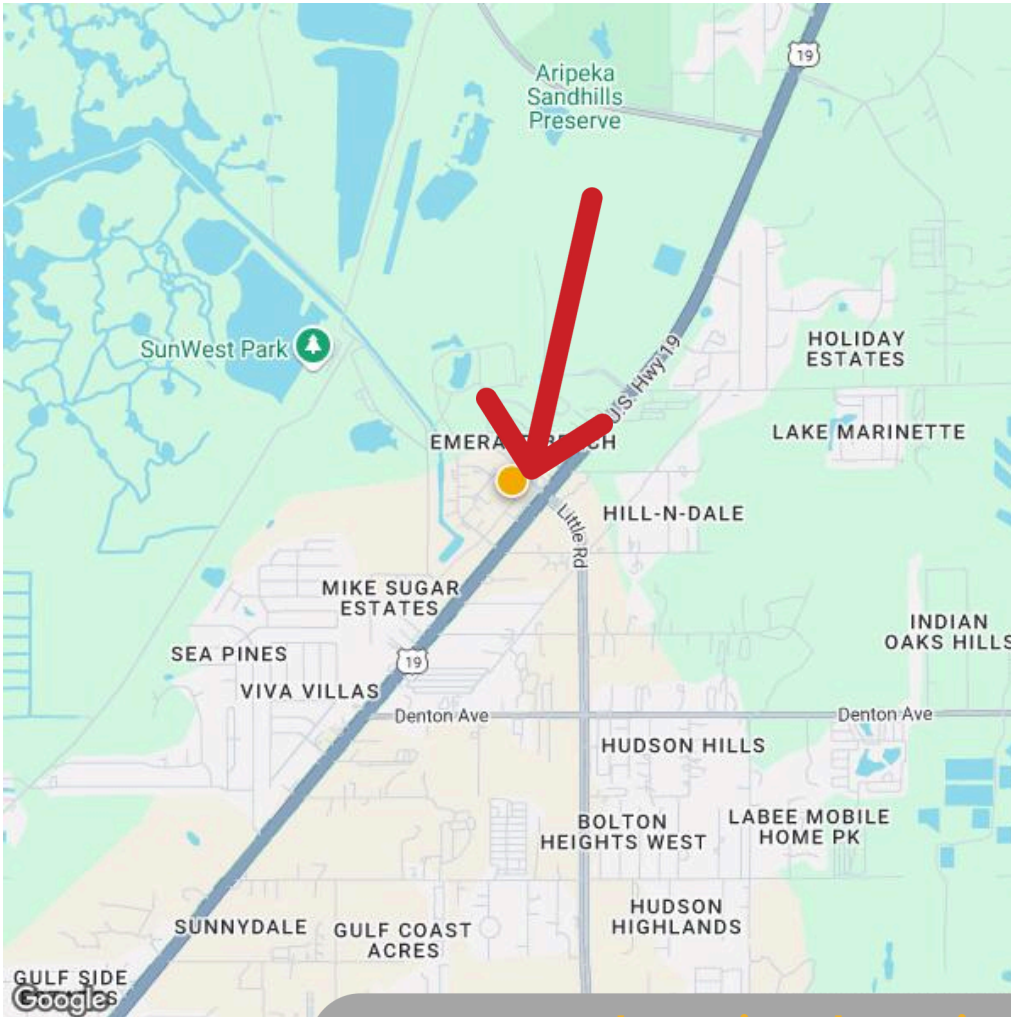
John T. Bast III
Commercial Real Estate Advisor
727-999-1644
john@bastcommercialgroup.com
www.bastcommercialgroup.com



Schedule your tour today!

BAST COMMERCIAL GROUP
19006 1ST ST SW LUTZ, FL 33548

Map



Around the Neighborhood

Zoned: C2

Allowable Use:

Warehouse (Industrial)
Commercial, Distribution,
Warehouse

Year built:

2022

20,000 SQFT

Lot Size:

1.25 ACRE

Location, Location, Location

100' on Galway Park Rd. (with 2 curb cuts)

Runs Parallel with US-19 between Emerald Blvd & Scheer

AADT Traffic Count: Blvd

US-19 39,000



Airport Tampa International

59 min drive 42.1 mi

St Pete-Clearwater International

70 min drive 41.5 mi



BAST COMMERCIAL GROUP

19006 1ST ST SW LUTZ, FL 33548



Demographics



Average HH Size



Median Age



Median HH Income - \$60,671

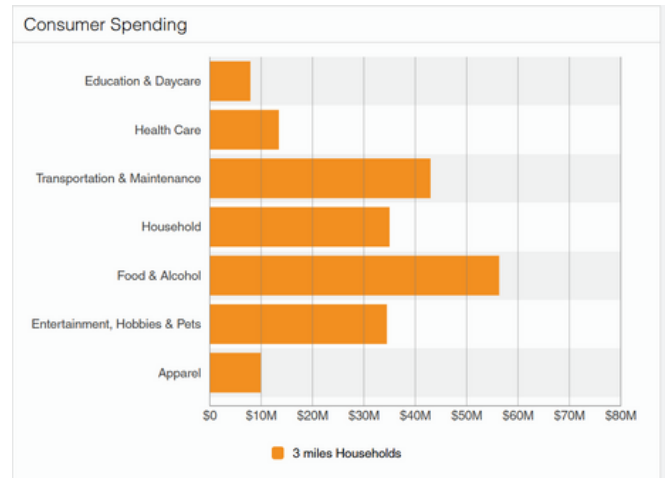
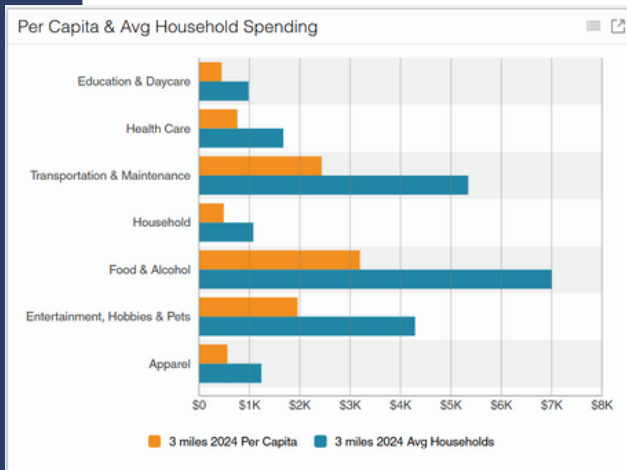


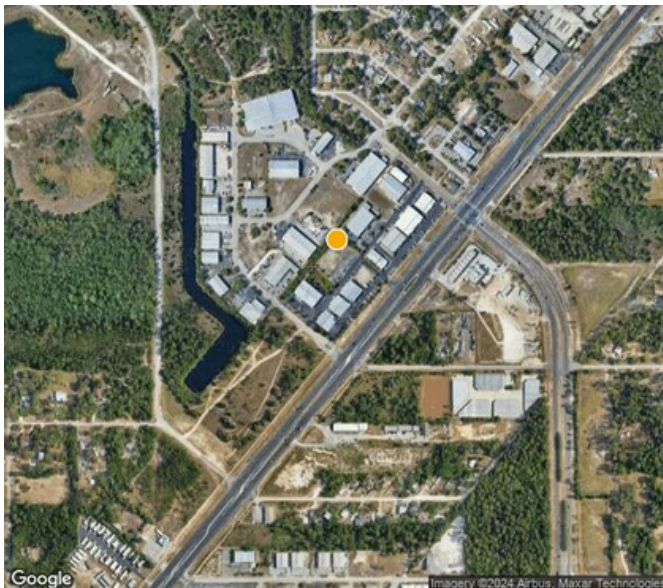
2022 Population - 17,624



Leading Industry - Service Producing Trade & Transportation Industries

16557 Galway Park Rd
Hudson, FL 34667





**16557 Galway Park Rd
Hudson, FL 34667**

**BAST COMMERCIAL GROUP
1906 1ST ST SW LUTZ, FL 33548**

**16557 Galway Park Rd
Hudson, FL 34667**



**BAST COMMERCIAL GROUP
19006 1ST ST SW LUTZ, FL 33548**



**16557 Galway Park Rd
Hudson, FL 34667**

**BAST COMMERCIAL GROUP
19006 1ST ST SW LUTZ, FL 33548**



**16557 Galway Park Rd
Hudson, FL 34667**

