

Oviedo Mall / Target Parcel Zoned Commercial For Sale

Orlando, FL. MSA

REAL PROPERTY SPECIALISTS, INC.
Appraisers • Brokers • Consultants



878-898 Oviedo Mall Blvd, Oviedo, FL 32765

Property Highlights

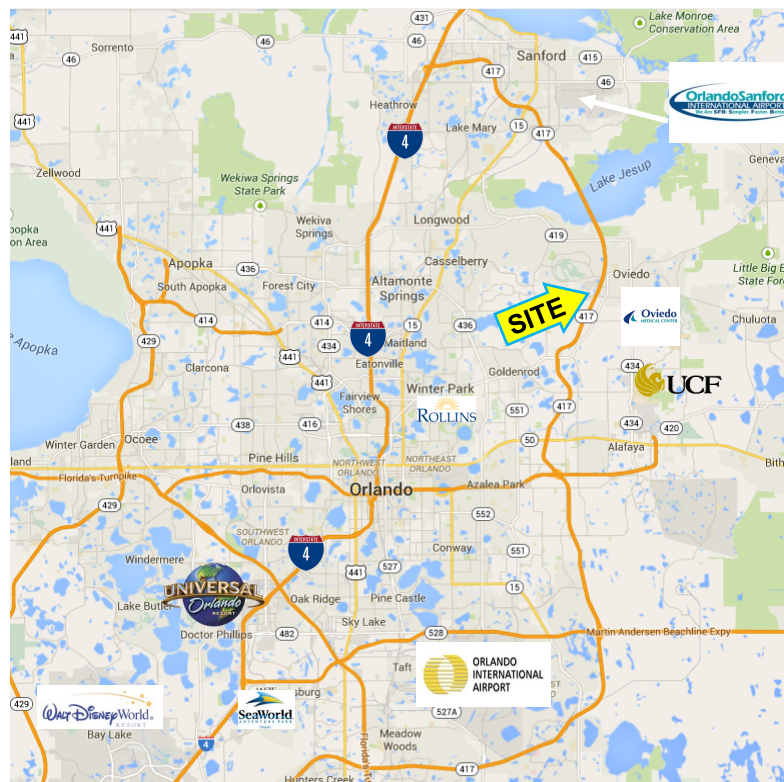
- 3.75+/- acre Commercially Zoned shadow anchor parcel to newly revamped Oviedo Mall & Target. Fully vested & previously permitted for 30,000sq ft retail center.
- Contiguous to Target and Chili's and adjacent to many national big box tenants.
- Located at Hwy 417 interchange with Red Bug Lake Rd.
- Only 5 miles from UCF, nation's largest university with 70,000+ students.
- Sandwiched between Advent Health ER Hospital to the West and Oviedo Hospital to the East.

Land Area: 3.75 acres \pm

Traffic Count: 34,000 AADT \pm

Zoned: Commercial

Demographics	2 mile	5 mile	10 mile
Population (2022)	24,368	165,718	648,523
Population (2027)	25,758	174,350	685,156
Average HH Income	\$119,983	\$102,885	\$89,769



AVAILABLE FOR SALE

Orlando, FL. MSA

REAL PROPERTY SPECIALISTS, INC.
Appraisers • Brokers • Consultants



REAL PROPERTY SPECIALISTS, INC.
Appraisers • Brokers • Consultants

For More Information Call 407.812.8000

www.realpropertyspecialists.com

The information contained herein is submitted subject to errors, omissions, prior sale or lease, or withdrawal without notice

AVAILABLE FOR SALE

Orlando, FL. MSA

REAL PROPERTY SPECIALISTS, INC.
Appraisers • Brokers • Consultants



REAL PROPERTY SPECIALISTS, INC.
Appraisers • Brokers • Consultants

For More Information Call 407.812.8000

www.realpropertyspecialists.com

The information contained herein is submitted subject to errors, omissions, prior sale or lease, or withdrawal without notice

Orlando, FL MSA



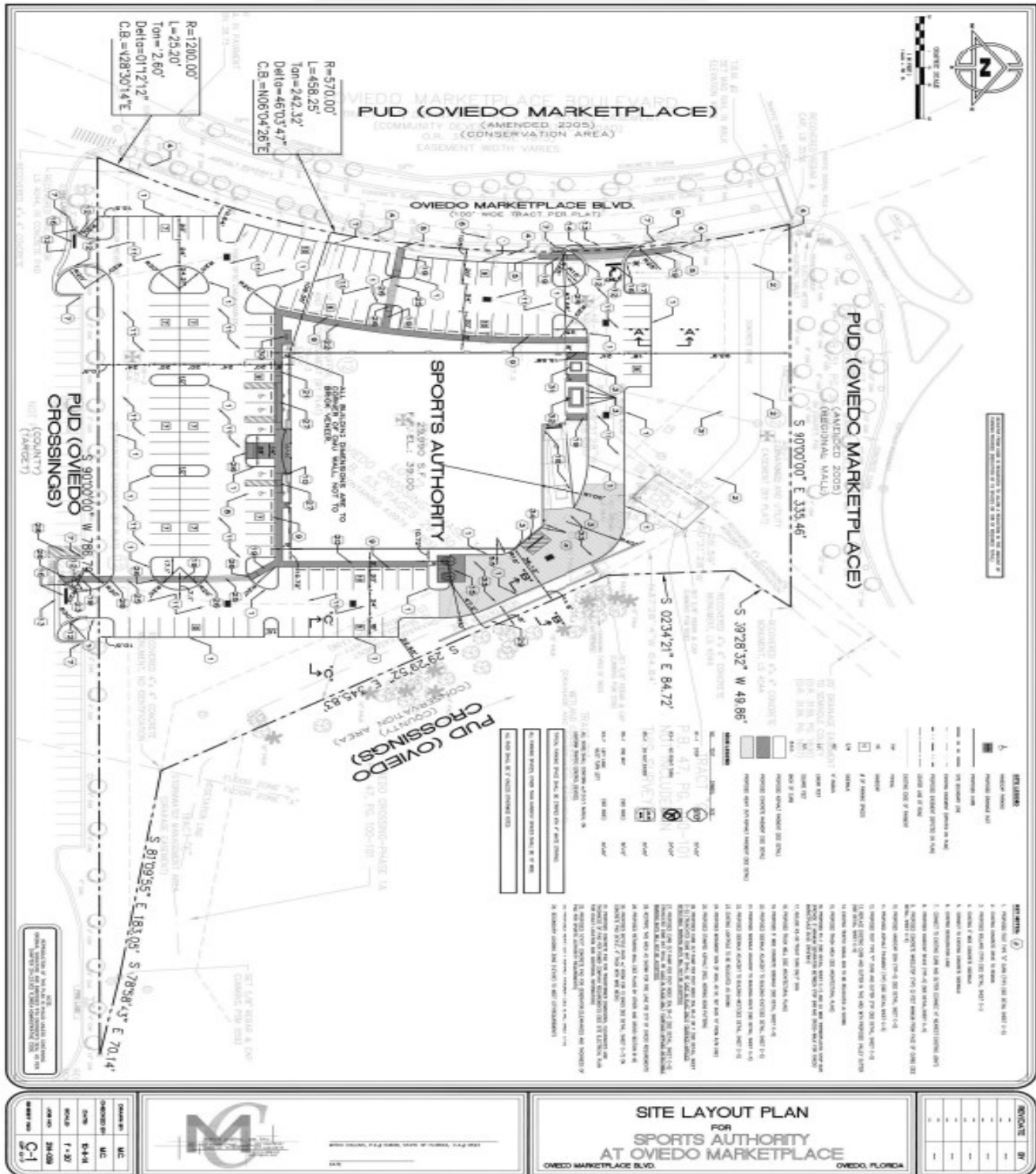
Appraisers • Brokers • Consultants



www.realpropertyspecialists.com

The information contained herein is submitted subject to errors, omissions, prior sale or lease, or withdrawal without notice

Big Box Concept Plan



Boundary Survey Plan

