



## Suite 503 - 1080 Howe Street Vancouver, BC

### Opportunity

Opportunity to lease 2,233 SF of fully-improved, premier office space in the heart of downtown Vancouver. Centrally situated at Howe and Helmcken, this building is within close proximity to public transportation, trendy restaurants and is within walking distance to all points on the downtown peninsula.

#### Brian Mackenzie

Vice President, Leasing & Sales  
604 691 6618  
bmackenzie@naicommercial.ca

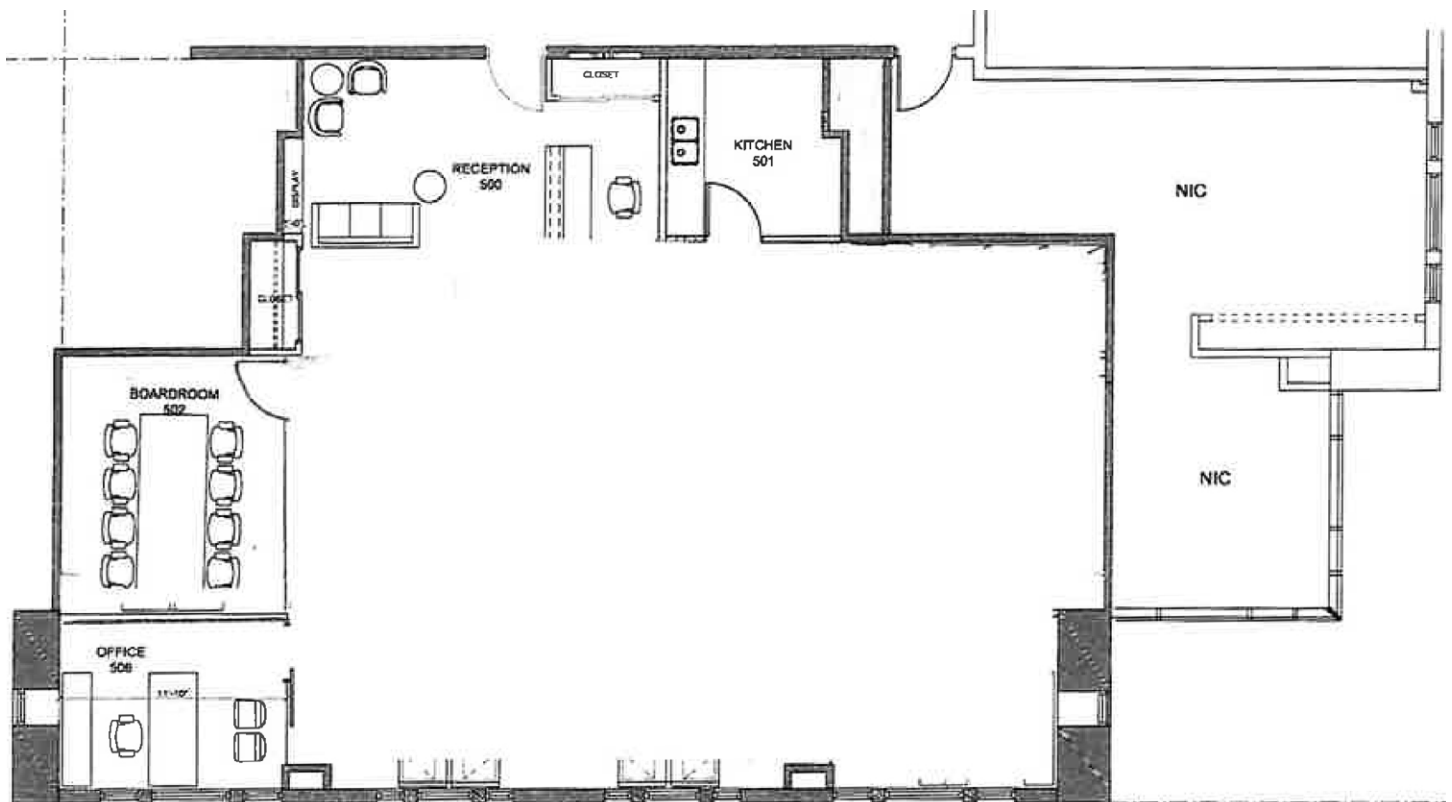
**NAI Commercial**  
1075 W Georgia St, Suite 1300  
Vancouver, BC V6E 3C9  
+1 604 683 7535  
naicommercial.ca

# Suite 503 - 1080 Howe Street Vancouver, BC

## Highlights

- ▶ Improved space with one office, kitchen, boardroom and open area
- ▶ Underground parking
- ▶ Gym, showers, kitchen and common boardroom
- ▶ Double glass door entry to the building
- ▶ Open area with lots of natural light

## Floor Plan



HELMCKEN STREET

## Property Details

Size  
2,233 SF

Base Rent  
\$19.00/SF

Op Cost and Taxes  
\$22.00/SF (2024 est)

Brian Mackenzie  
Vice President, Leasing & Sales  
604 691 6618  
bmackenzie@naicommercial.ca





VANCOUVER CITY CENTRE



COURTHOUSE

1080 HOWE

HOWE ST

HELMCKEN ST

GRANVILLE ST



NAI Commercial

NAI Commercial | 1300-1075 W Georgia St  
Vancouver, BC V6E 3C9 | [naicommercial.ca](http://naicommercial.ca)

©2024 NAI Commercial (BC) Ltd. All rights reserved. No warranty or representation, express or implied, is made as to the accuracy of the information contained herein, and the same is submitted subject to errors, omissions, change of price, rental or other conditions, prior sale, lease or financing, or withdrawal without notice, and of any special listing conditions imposed by our principals no warranties or representations are made as to the condition of the property or any hazards contained therein are any to be implied. Aerial image(s) courtesy of Google, Landsat/Copernicus, Autoprop.