

INDUSTRIAL LAND AVAILABLE • 53+ ACRES

SEGERS ROAD @ OLD HIGHWAY 20 • HUNTSVILLE, AL

SALE

Segers Road

(Just north of Old Highway 20)

Huntsville, AL

AVAILABLE

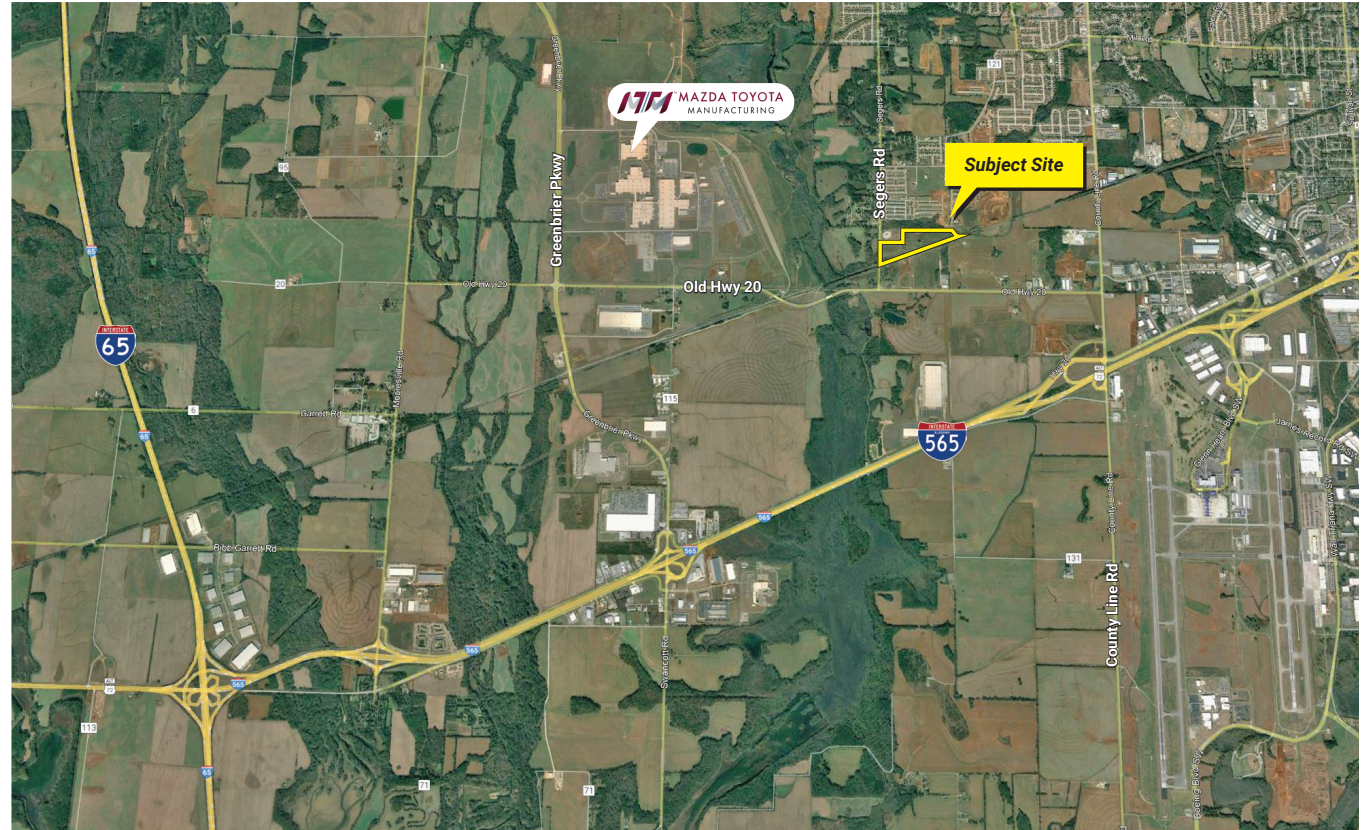
53.39 acres (52.4 usable acres)

COMMENTS

- Commercial Industrial Park Zoning (CIP)
- Located in Limestone County within Huntsville city limits
- Convenient access to major traffic thoroughfares including I-565
- Close proximity to MTMUS and many new speculative developments
- Potential rail access

THE PROPERTY

Currently used for agricultural purposes, the tract presents an attractive opportunity for development. It is well suited for industrial use or possibly residential/multi-family. The area has experienced tremendous growth with no signs of stopping.



CALL FOR PRICING INFORMATION

EXCLUSIVE AGENTS

Bart Smith, CCIM, SIOR
barts@grahamcompany.com

Tyler Fanning, SIOR
tylerf@grahamcompany.com

256.382.9010



305 Church Street SW
Suite 710
Huntsville, AL 35801

TEL 256.382.9010
FAX 256.382.9011
grahamcompany.com

Information deemed reliable, but not guaranteed.



INDUSTRIAL LAND AVAILABLE • 53+ ACRES

SEGERS ROAD @ OLD HIGHWAY 20 • HUNTSVILLE, AL



View looking west



Graham & Co

305 Church Street SW
Suite 710
Huntsville, AL 35801

TEL 256.382.9010
FAX 256.382.9011
grahamcompany.com

Information deemed reliable, but not guaranteed.



INDUSTRIAL LAND AVAILABLE • 53+ ACRES

SEGERS ROAD @ OLD HIGHWAY 20 • HUNTSVILLE, AL



Graham & Co

305 Church Street SW
Suite 710
Huntsville, AL 35801

TEL 256.382.9010
FAX 256.382.9011
grahamcompany.com

Information deemed reliable, but not guaranteed.