

FOR LEASE

3439 ROBIN LANE

±1,284 SF Available for Lease

CAMERON PARK, CA



KIDDER.COM

km Kidder
Mathews

Property Highlights

Available for lease

Located in a well established professional office park

Ready for immediate occupancy

Ideal for professional office or medical user

Abundant parking with well maintained common area

Modern amenities

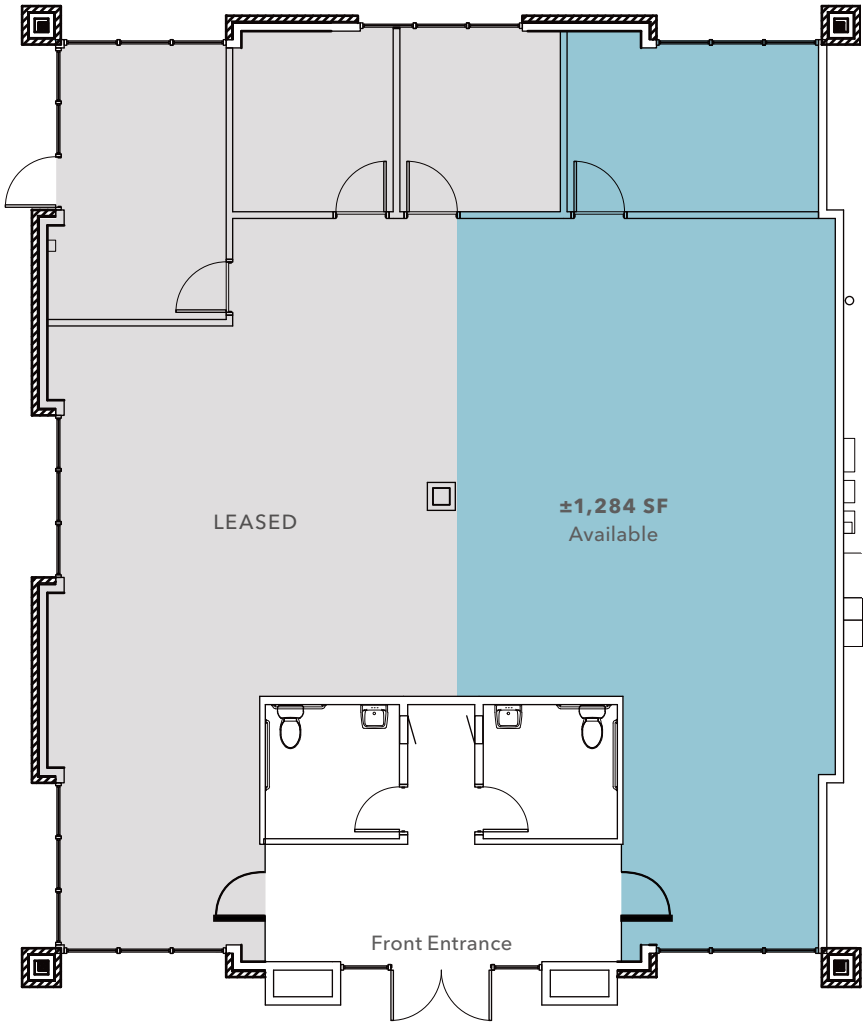
Located in the heart of Cameron Park with a wide variety of food, shopping and easy access to Hwy 50



KIDDER.COM

This information supplied herein is from sources we deem reliable. It is provided without any representation, warranty, or guarantee, expressed or implied as to its accuracy. Prospective Buyer or Tenant should conduct an independent investigation and verification of all matters deemed to be material, including, but not limited to, statements of income and expenses. Consult your attorney, accountant, or other professional advisor. All Kidder Mathews designs are the sole property of Kidder Mathews. Branded materials and layouts are not authorized for use by any other firm or person.

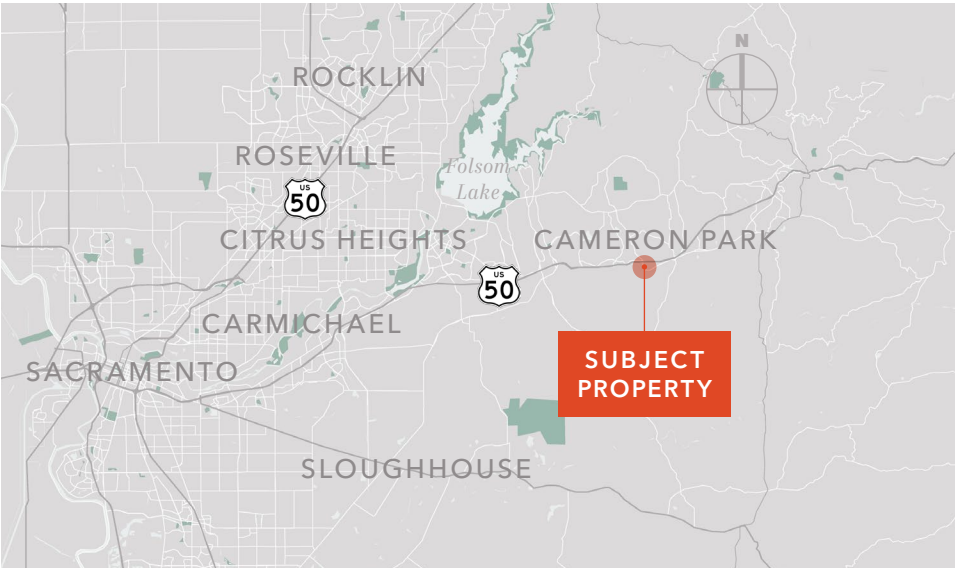
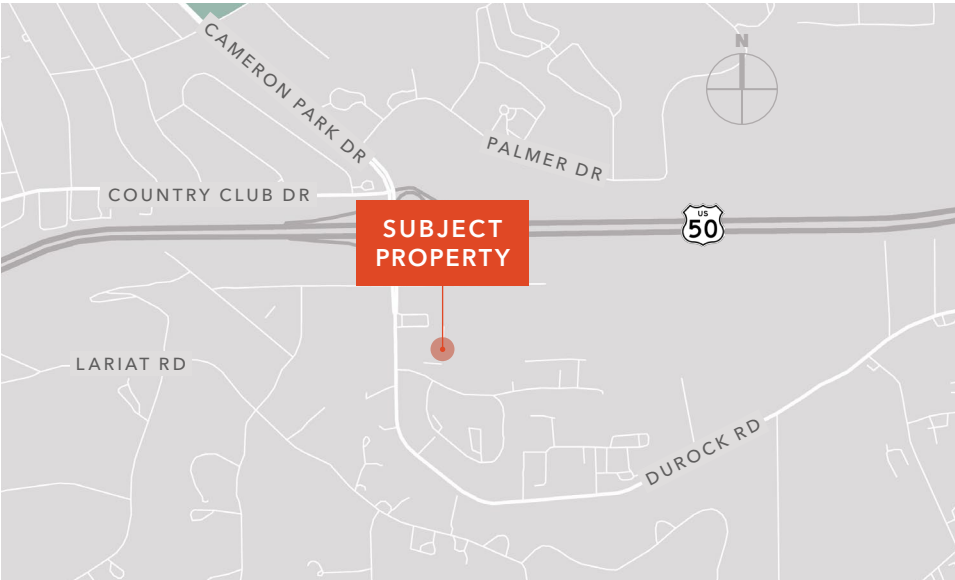
FLOOR PLAN



KIDDER.COM

This information supplied herein is from sources we deem reliable. It is provided without any representation, warranty, or guarantee, expressed or implied as to its accuracy. Prospective Buyer or Tenant should conduct an independent investigation and verification of all matters deemed to be material, including, but not limited to, statements of income and expenses. Consult your attorney, accountant, or other professional advisor. All Kidder Mathews designs are the sole property of Kidder Mathews. Branded materials and layouts are not authorized for use by any other firm or person.





3439 ROBIN LANE

Exclusively listed by

TOM CONWELL
916.751.3626
tom.conwell@kidder.com
LIC N° 01394155

KIDDER.COM

This information supplied herein is from sources we deem reliable. It is provided without any representation, warranty, or guarantee, expressed or implied as to its accuracy. Prospective Buyer or Tenant should conduct an independent investigation and verification of all matters deemed to be material, including, but not limited to, statements of income and expenses. Consult your attorney, accountant, or other professional advisor. All Kidder Mathews designs are the sole property of Kidder Mathews. Branded materials and layouts are not authorized for use by any other firm or person.

