



Fortune Plaza

6622 Southpoint Drive South
Jacksonville, Florida 32216

Spaces	Lease Rate	Space Size
165	\$22.50 SF/yr	1,344 SF
190	\$22.00 SF/yr	3,528 SF
310	\$22.00 SF/yr	6,635 SF

Property Highlights

- Landmark Southpoint building highly visible from JTB & I-95
- Four-story atrium with water features & lush indoor landscape
- On-site deli/cafe
- Conveniently located near retail, restaurants & banking
- Under new ownership
- Abundant parking available

Property Overview

Located in one of Jacksonville's best-performing submarkets, this world-class office and financial center sit on a 3.44-acre campus immediately accessible to the JTB/I-95 interchange.

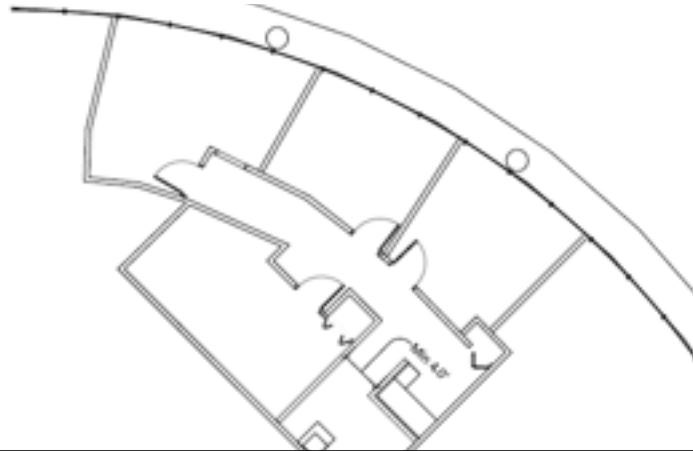


For More Information



Tiffany Wein

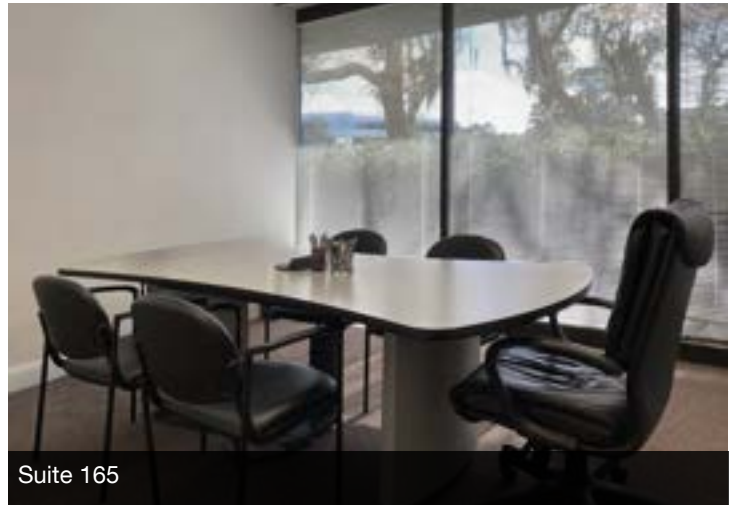
Senior Associate
O: 904 404 4453 | C: 904 315 7162
tw@naihallmark.com



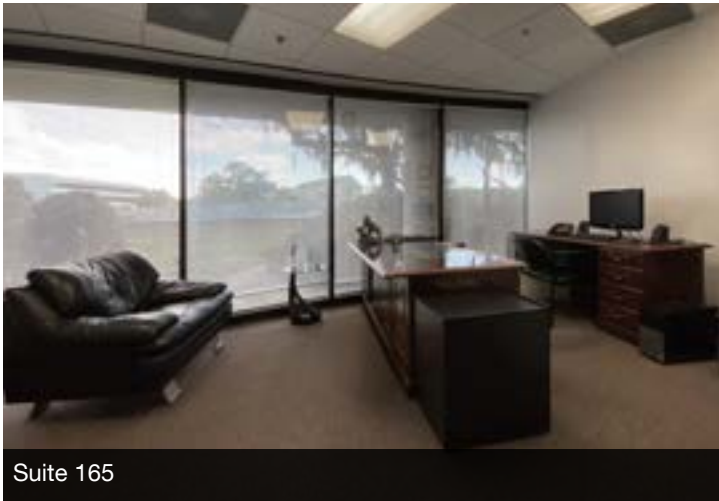
Suite 165 - 1,344 SF



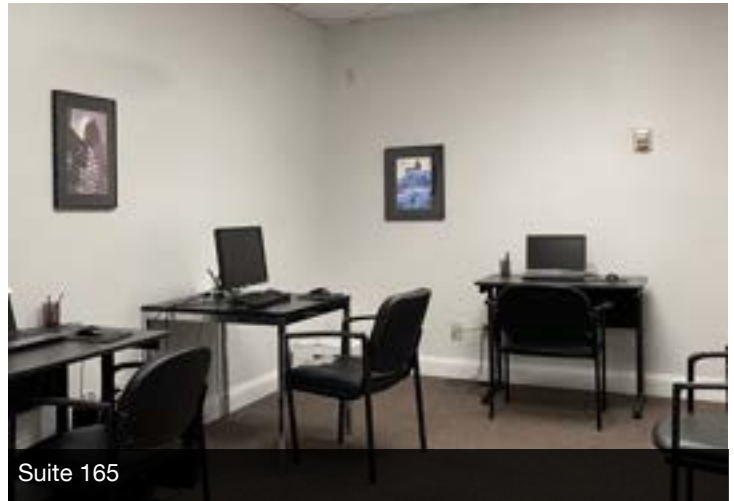
Suite 165



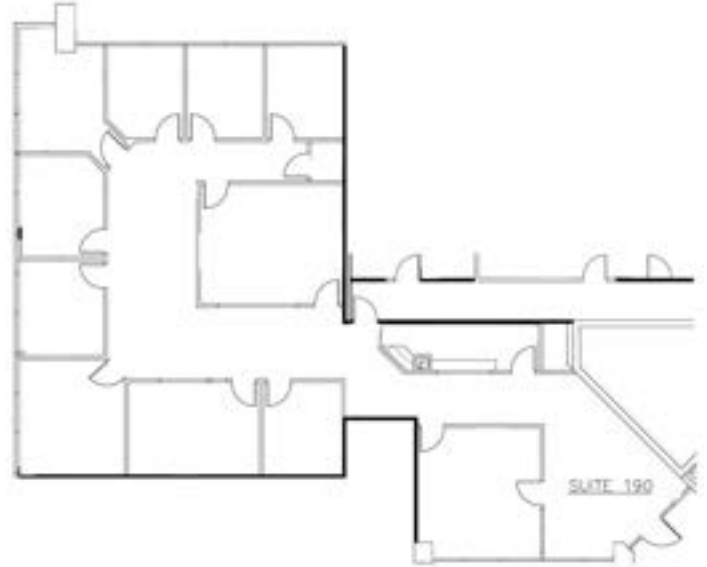
Suite 165



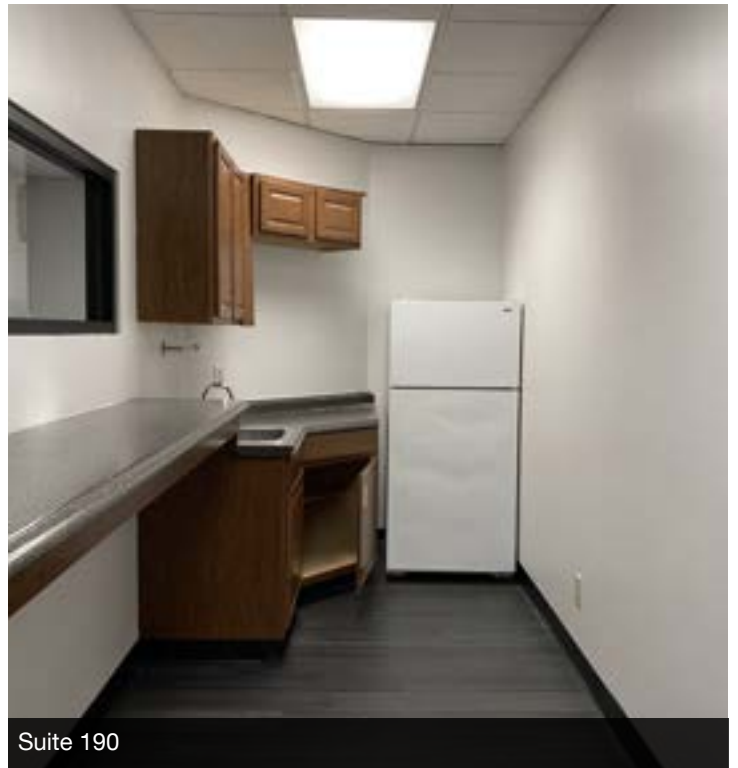
Suite 165



Suite 165



Suite 190 - 3,528 SF





Suite 190 rendering



Suite 190 rendering



Suite 190 rendering



Suite 190 rendering



Suite 190 rendering



Suite 190 rendering



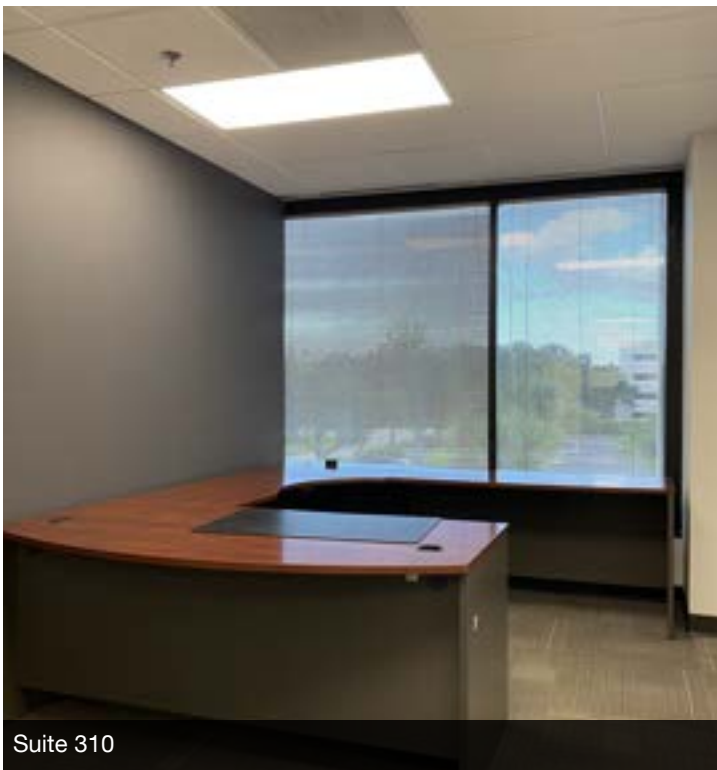
Suite 310 - 6,635 SF



Suite 310



Suite 310



Suite 310



Suite 310



Suite 310

