

Webster

Shops at Baybrook, SEC of Bay Area Blvd. and Gulf Freeway. One pad remaining plus 1,500 SF of retail. Several are now open!



Shops at Baybrook



TIRR Memorial
Hermann
Outpatient
Rehabilitation –
Southeast –
pediatric and adult
rehab. Open in
front of Costco in
Webster.



Webster

Axiom Space leased the former 146,000 SF Fry's Electronics building in Webster to house its engineering operations. 600 jobs!



Now open in Webster --



Proposed development at 18401 Egret Bay Blvd. in Webster. 36,000 SF mixed-use

Big new project! Redevelopment of **600 Gemini** – 365,000 SF!
Space available from 3,000 SF up.
AXIOM leased space to build space suits. 500 jobs!

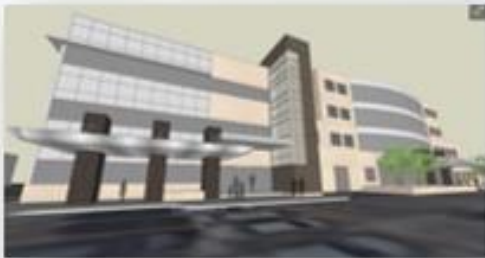


New medical office campuses are underway:

- **905 W. Medical Center Blvd.** | 100,000 square feet | CLS Health
- **507 N. Texas Ave.** | 60,000 square feet | Houston Physician's Hospital
- **750 N. Texas Ave.** | 20,000 square feet | Bayou City Dermatology and others
- **555 East NASA Parkway** | 60,000 square feet | Micro-Hospital—Dr. Kahn Le, Developer



555 East NASA Parkway Micro-Hospital Building



Houston Physicians' Hospital expansion project on Texas Ave. — now approx. 84,000 SF. Hospital starting soon on more projects on Texas Ave.



Webster's Flyway development

Great Wolf Resorts broke ground on Houston-area indoor waterpark in 2022.



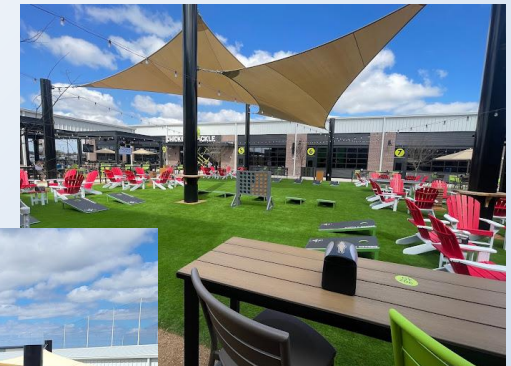
2nd Great Wolf Lodge in Texas!

- \$200M project
- 532 room resort , 95,000 SF indoor water park and 11,000 SF conference center on 27-acre site
- 600 construction workers
- 500 FT and PT jobs

Great Wolf Lodge in Houston



Vida Mariscos will open at Flyway! 13,000 SF on 2.11 acres



Chicken & Pickle – 3-acre indoor/outdoor entertainment complex is now open!

FLYWAY

WEBSTER'S PREMIER DESTINATION DEVELOPMENT



- 80+-acre destination
- Boardwalk, event lawn, and unique amenities
- Iconic entertainment, dining, recreation, and sports entertainment venues
- Anchored by the region's only **Great Wolf Lodge** indoor waterpark resort hotel and conference center