

*Industrial Space For Lease*

# 6408 & 6410 E Archer St

Tulsa, OK 74115

**WIGGIN**  
PROPERTIES, LLC



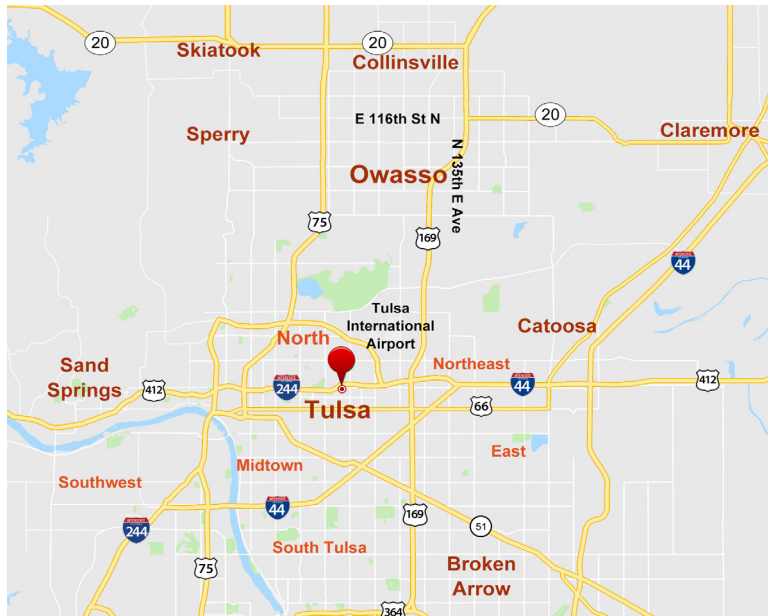
## Industrial Space for Lease

**Building SF:** 2,550 sf - 6,000 sf

**Lease Rate:** \$6.00 psf NNN

### Highlights:

- Highway Signage
- Multiple Spaces Available
- New Security Lighting
- New Exterior Paint
- Amazing Access to Highway 412 & 169
- Fenced and Graveled Private Parking Area
- Central Location Within 10 Minutes of South Tulsa
- 20' Clear Heights



Call Paul Bush at **918.287.7825**

[pbush@wigginprop.com](mailto:pbush@wigginprop.com) | [wigginprop.com](http://wigginprop.com)

This material is provided for information purposes only. It is from sources believed to be reliable. However, Wiggin Properties makes no warranties or representations, expressed or implied, as to the accuracy or sufficiency of the information. It is presented subject to errors, omissions, changes or withdrawal without notice. Square footage is provided by the local County Assessor or the Owner. Photos and graphics with copyrights by Costar, Google, Wiggin Properties and independent contractors are used with permission.

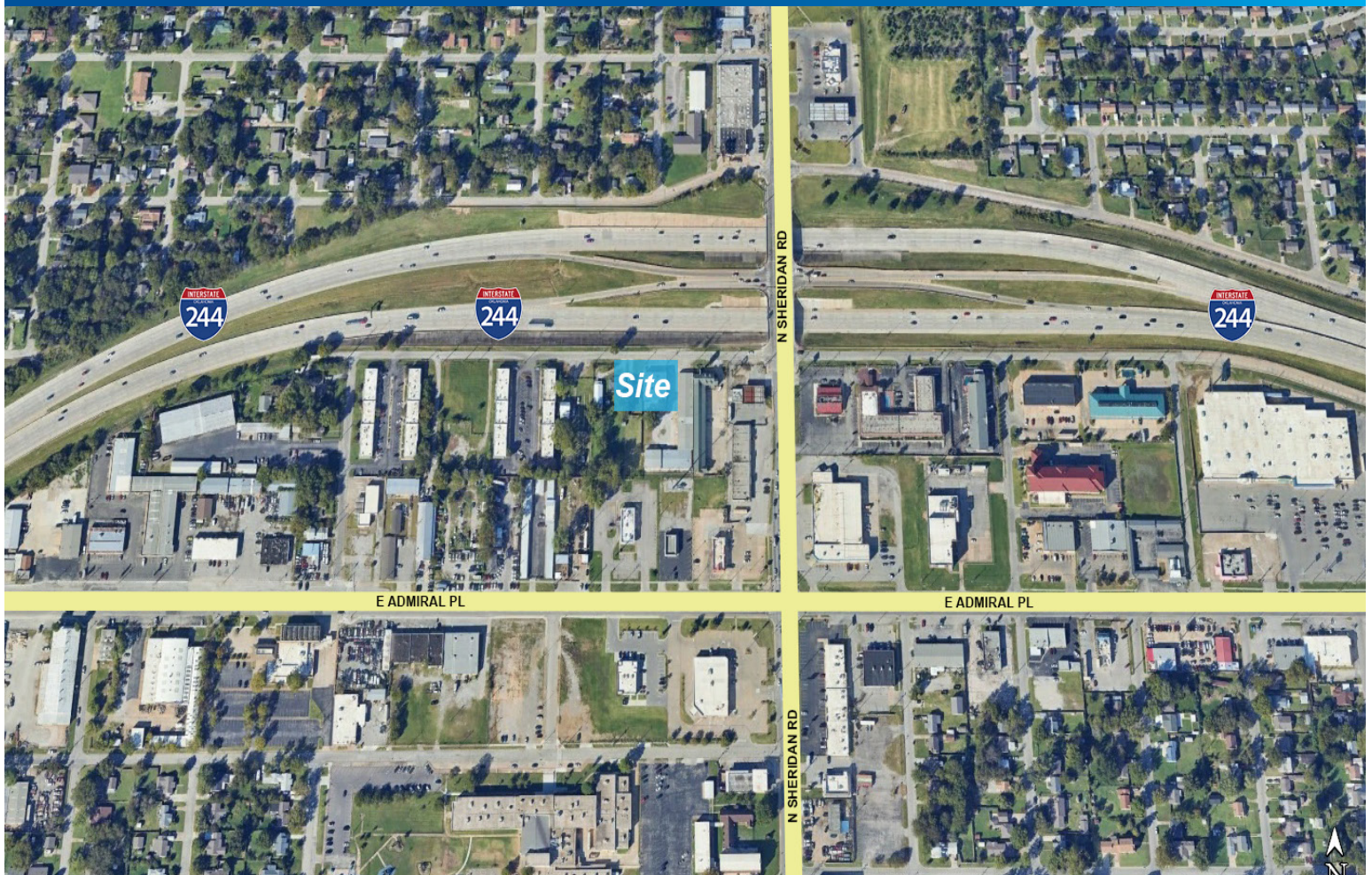


Industrial Space For Lease

# 6408 & 6410 E Archer St

Tulsa, OK 74115

**WIGGIN**  
PROPERTIES, LLC

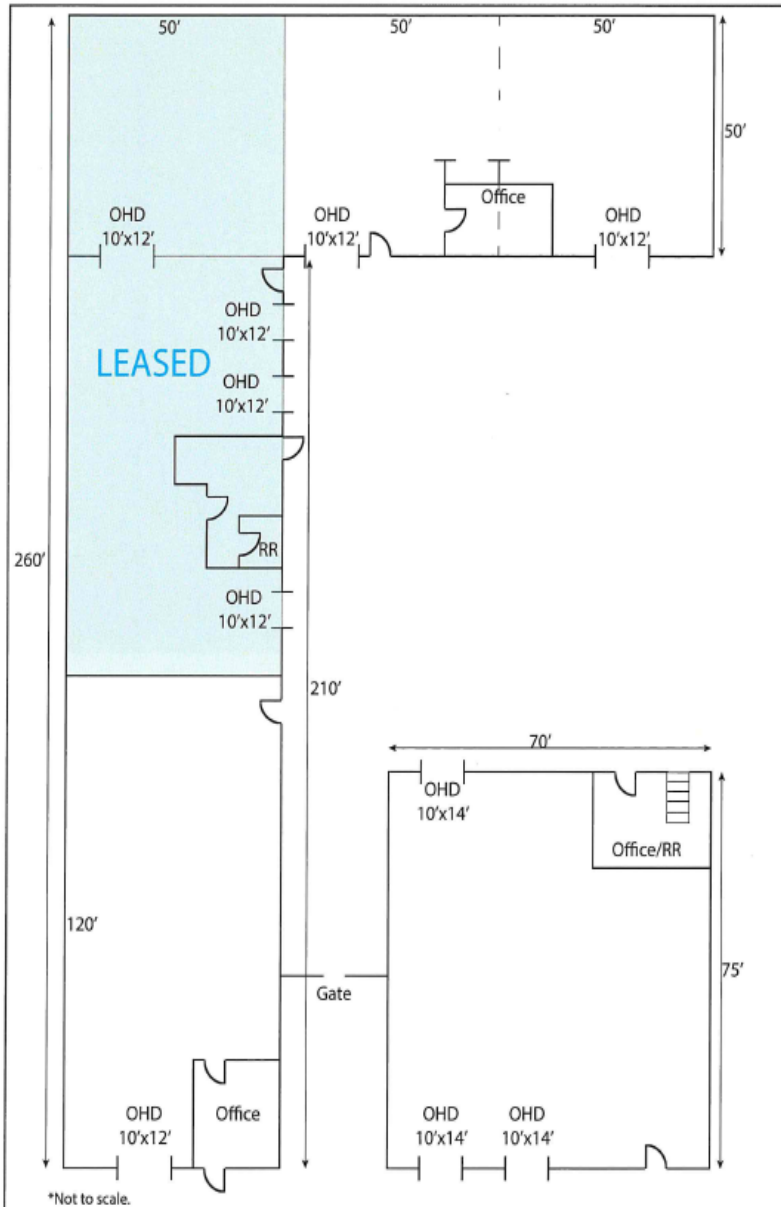


Call Paul Bush at **918.287.7825**

[pbush@wiggprop.com](mailto:pbush@wiggprop.com) | [wiggprop.com](http://wiggprop.com)

This material is provided for information purposes only. It is from sources believed to be reliable. However, Wiggin Properties makes no warranties or representations, expressed or implied, as to the accuracy or sufficiency of the information. It is presented subject to errors, omissions, changes or withdrawal without notice. Square footage is provided by the local County Assessor or the Owner. Photos and graphics with copyrights by Costar, Google, Wiggin Properties and independent contractors are used with permission.





## Availability:

### Space 1

- 6000 sf
- Reception
- Bathroom
- 15' Center Clear Height
- 10' Side Clear Height
- One (1) Roll-up Door

### Space 2 & 3

- 2500 sf or 5000 sf (Can be demised into 2500 sf spaces)
- New Lighting
- Renovated Bathroom
- Added Electricity

### Space 4

- 5250 sf
- 20' Ceiling Heights
- Three (3) 16' x 12' Roll-up Doors
- Fully Insulated
- Additional HVAC
- Upstairs One (1) Bedroom Apartment

Call Paul Bush at **918.287.7825**

[pbush@wigginprop.com](mailto:pbush@wigginprop.com) | [wigginprop.com](http://wigginprop.com)