

**1502**  
ANNAPOLIS ROAD  
ODENTON, MD

Meade Center Retail  
**NOW PRE-LEASING**

## NEW RETAIL DEVELOPMENT

Fronting Annapolis Road  
at corner of Berger St.

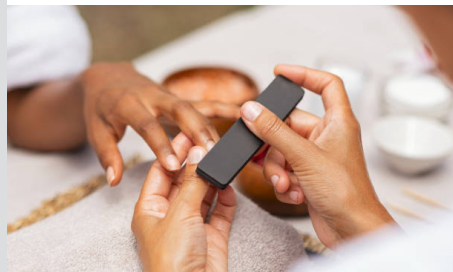
- 2,250 SF Stand-Alone, Drive-Thru Concept (Berger St)
- Up to 10,000 SF +/- Retail Building (Annapolis Rd)
- Asking Rent:** Contact Broker for More Details
- Seeking a variety of retail uses:** nail salon, quick-serve food options, insurance/real estate office, nail salon, drive-thru/fast food
- Nearby Fort Meade:** Fort George G. Meade, located mid-way between Baltimore and Washington, D.C., is home to all five branches of the military service – Army, Navy, Air Force, Marines and Coast Guard. Fort Meade is home to more than 115 government agencies and organizations including the National Security Agency. Fort Meade is Maryland's largest employer and has the third largest workforce of any Army installation in the continental United States. There are more than 56,000 military and civilians on the Installation.



NORTH ELEVATION



NORTH ELEVATION



**ROSSO**  
**COMMERCIAL**  
real estate services

# 1502

## ANNAPOLIS ROAD

ODENTON, MD



FORT MEADE



While we have no reason to doubt the accuracy of any of the information supplied, we cannot, and do not, guarantee its accuracy. All information should be independently verified prior to a purchase or lease of the property. We are not responsible for errors, omissions, misuse, or misinterpretation of information contained herein and make no warranty of any kind, express or implied, with respect to the property or any other matters.

MOVING COMMERCIAL REAL ESTATE GOALS **FORWARD.**

# 1502

## ANNAPOLIS ROAD

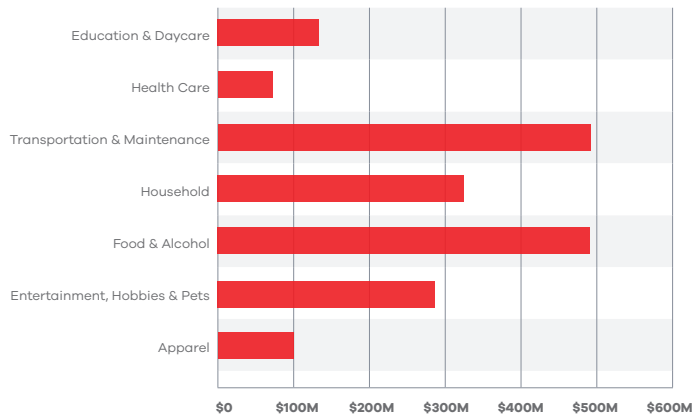
ODENTON, MD

### MARKET DEMOGRAPHICS

#### DEMOGRAPHICS

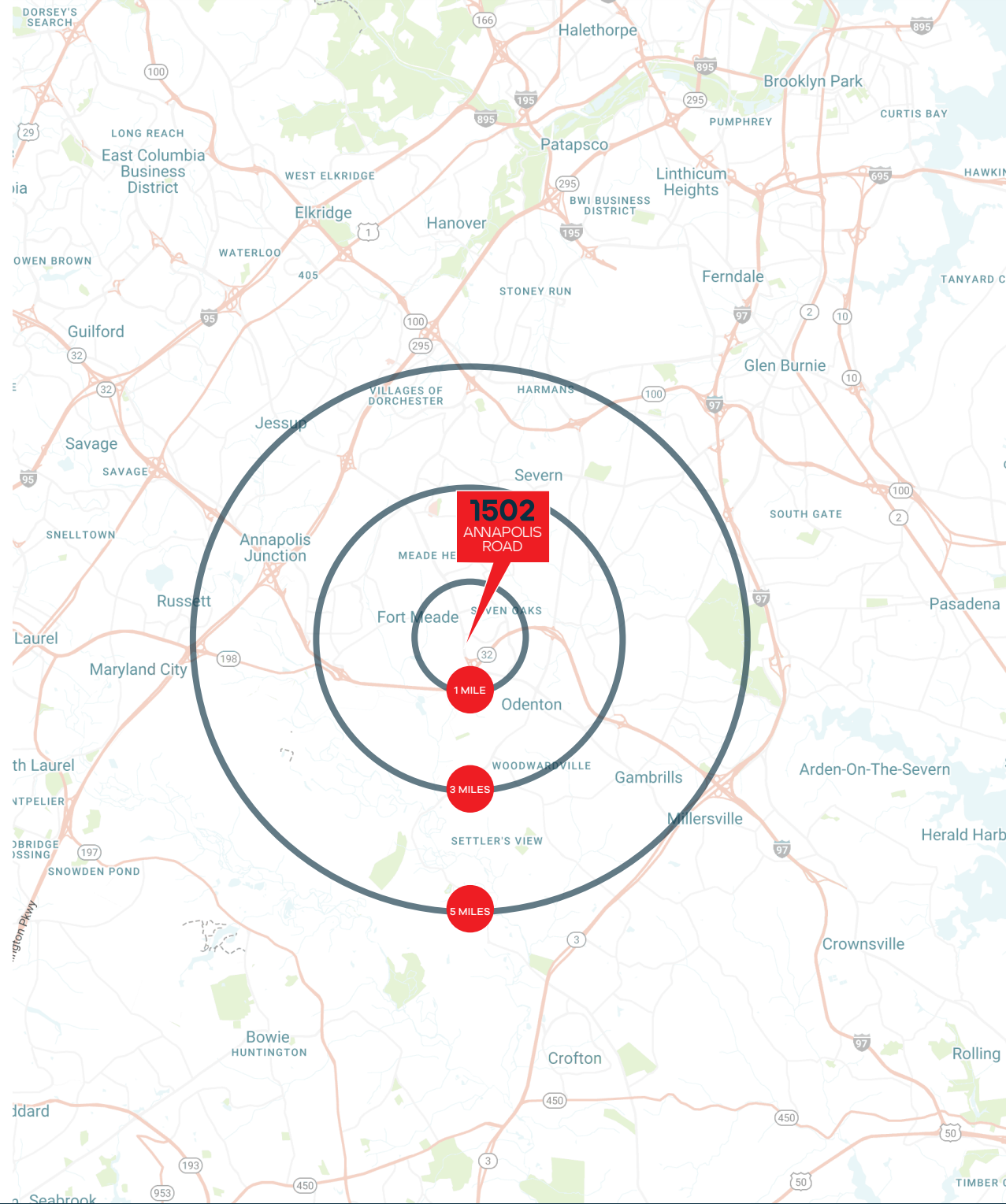
	2 mile	5 mile	10 mile
2023 Population	35,574	135,641	621,505
Average Household Income	\$118,388	\$129,382	\$127,772
Median Household Income	\$93,408	\$106,109	\$104,565
2023 Households	12,285	50,580	229,656

#### CONSUMER SPENDING



#### TRAFFIC

**Annapolis Road:** 19,811 cars per day



MOVING COMMERCIAL REAL ESTATE GOALS **FORWARD.**

While we have no reason to doubt the accuracy of any of the information supplied, we cannot, and do not, guarantee its accuracy. All information should be independently verified prior to a purchase or lease of the property. We are not responsible for errors, omissions, misuse, or misinterpretation of information contained herein and make no warranty of any kind, express or implied, with respect to the property or any other matters.

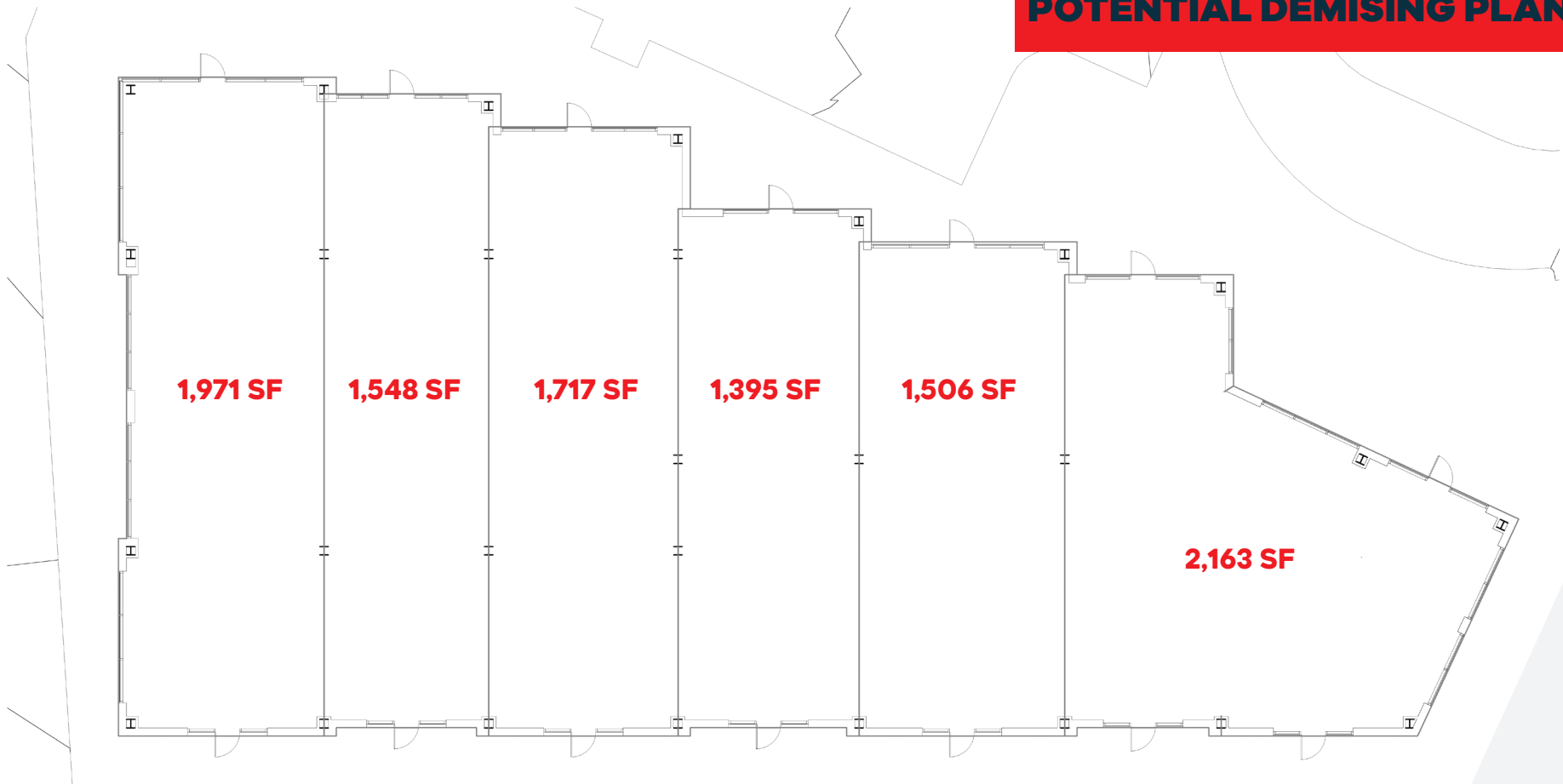


# 1502

## ANNAPOLIS ROAD

ODENTON, MD

### POTENTIAL DEMISING PLAN



ANNAPOLIS ROAD

BERGER STREET

# 1502

## ANNAPOLIS ROAD

ODENTON, MD



SEVEN OAKS SHOPPING CENTER

**weis** **BRU'STER'S** America's Best **WARIGS**

**1502**  
ANNAPOLIS ROAD  
ODENTON, MD

THE SHOPS AT THE VILLAGE AT ODENTON STATION

**RUTH'S CHRIS STEAK HOUSE** **Baltimore Coffee** **NAL HAVEN**

ODENTON SHOPPING CENTER

**Giant** **DOLLAR TREE** **SUBWAY**

**FIVE GUYS** **Little Caesars Pizza** **Advance! Auto Parts**

While we have no reason to doubt the accuracy of any of the information supplied, we cannot, and do not, guarantee its accuracy. All information should be independently verified prior to a purchase or lease of the property. We are not responsible for errors, omissions, misuse, or misinterpretation of information contained herein and make no warranty of any kind, express or implied, with respect to the property or any other matters.

MOVING COMMERCIAL REAL ESTATE GOALS **FORWARD.**

# 1502

## ANNAPOLIS ROAD

ODENTON, MD

**Ryan Brassel**  
ryan@rossocre.com  
C | 410.507.3144

**John A. Rosso, SIOR**  
john@rossocre.com  
C | 410.802.1909



[www.ROSSOCRE.com](http://www.ROSSOCRE.com)

One Annapolis Street | Suite 101 | Annapolis, MD 21401 | [www.RossoCRE.com](http://www.RossoCRE.com)

While we have no reason to doubt the accuracy of any of the information supplied, we cannot, and do not, guarantee its accuracy. All information should be independently verified prior to a purchase or lease of the property. We are not responsible for errors, omissions, misuse, or misinterpretation of information contained herein and make no warranty of any kind, express or implied, with respect to the property or any other matters.