

Thomas Creek Preserve & Fish Camp


Prime Recreation Acreage



Available Amenities

 **Boat Ramp**

 **Boat Trailer Parking**

 **Fishing Available**

 **Parking**

 **Picnic Shelters**

 **Restrooms**

 **Trash Barrels**

About Thomas Creek Preserve & Fish Camp

The Thomas Creek Preserve is located in upper northwestern Jacksonville, near and along Thomas Creek, which divides a portion of Duval and Nassau Counties. The southernmost battle of the American Revolutionary War, and the only one fought in present-day Duval County, took place at Thomas Creek on May 17, 1777. Most of the land was owned at one time by members of the Ogilvie family, who originally settled in the area from Scotland in the mid-1800's and established the Ogilvie Cemetery near the Preserve. During the period from 1999 to 2002, the City and the St. Johns River Water Management District purchased the property as part of Preservation Project Jacksonville. The site comprises part of the 46,000-acre Timucuan Ecological and Historic Preserve that was first established in 1988.

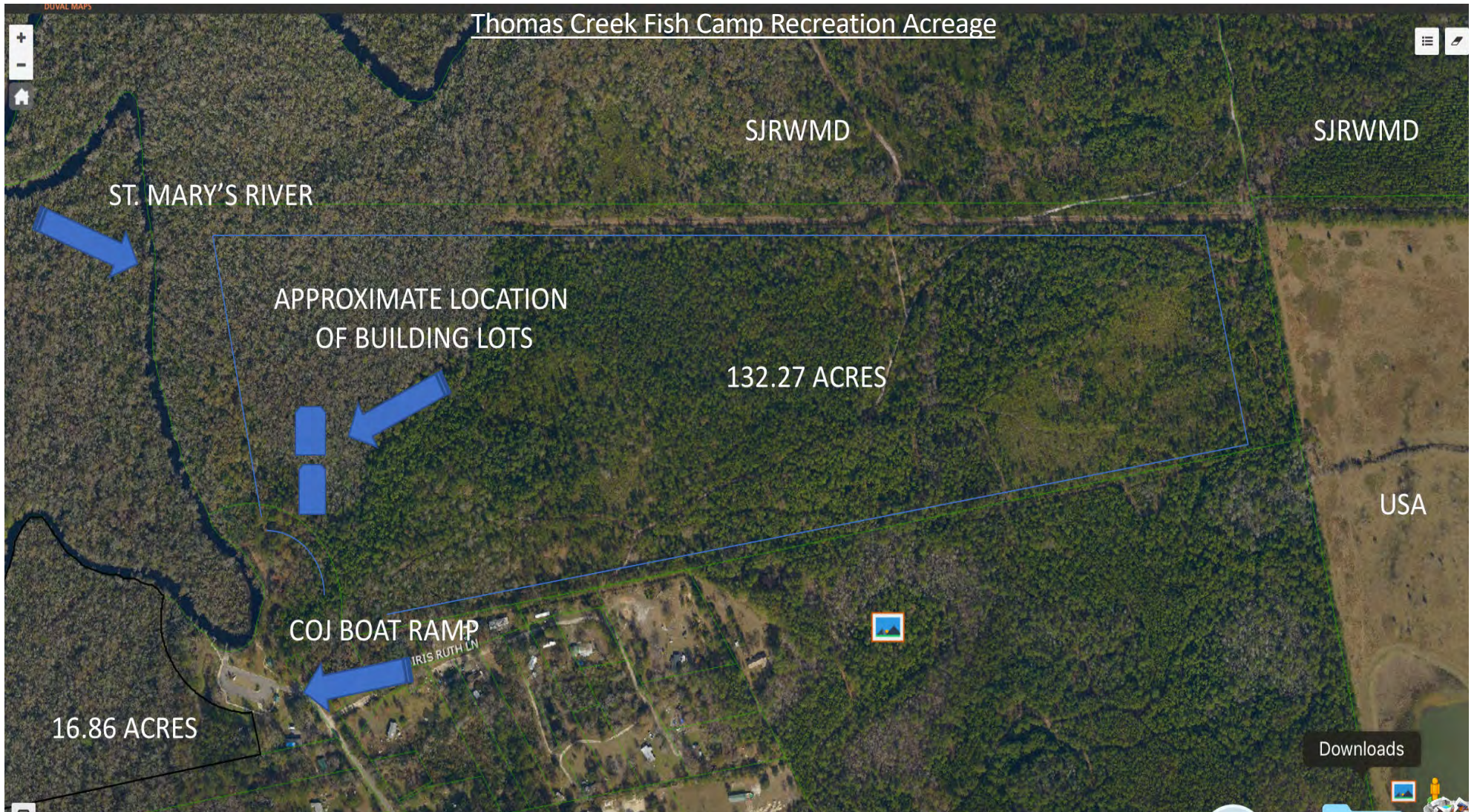
Thomas Creek Preserve & Fish Camp

Prime Recreation Acreage

17198 Ethel Road, Jacksonville, FL 32218

- 149 acres located on navigable Thomas Creek in north Jacksonville
- Mitigation bank land; subject to bank permit conditions
- Surrounded by extensive public land holdings
- Adjacent to City public boat ramp with amenities and public facilities
- Fish, hunt, kayak, swim, hike, bird watch and more
- Approximately 2 acres available for cabin construction
- Ideal for hunt camp, family retreat and group outings





Thomas Creek Fish Camp Recreation Acreage Land Use and Zoning Map

AGR-II

RR RR-Acre

019611 0000

AGR-III

AGR

PBFPBF-1

ROS

ROS

AGR-IV

