

**Lease Rate:**

\$5.50-\$12.00

PSF

CONTACT US

Justin Bentley, CCIM, SIOR
+1 501 850 0739
justin.bentley@ar.colliers.com

Claire Huchingson
+1 501 372 6161
claire.huchingson@ar.colliers.com

Colliers | Arkansas
1 Allied Drive, Suite 1500
Little Rock, AR 72202
P: +1 501 372 6161
F: +1 501 372 0671

FOR LEASE

1305-1317 N. Hills Blvd.

North Little Rock, AR

I-40 Industrial Space Crossroads Business Park

Features

- Lease rate: \$5.50/SF - \$12.00/SF
(available suites outlined on page 2)
- Dock-high doors and grade-level doors
- Newly renovated office
- Sprinkler system
- 20' clear height
- Quick access to Interstate 40

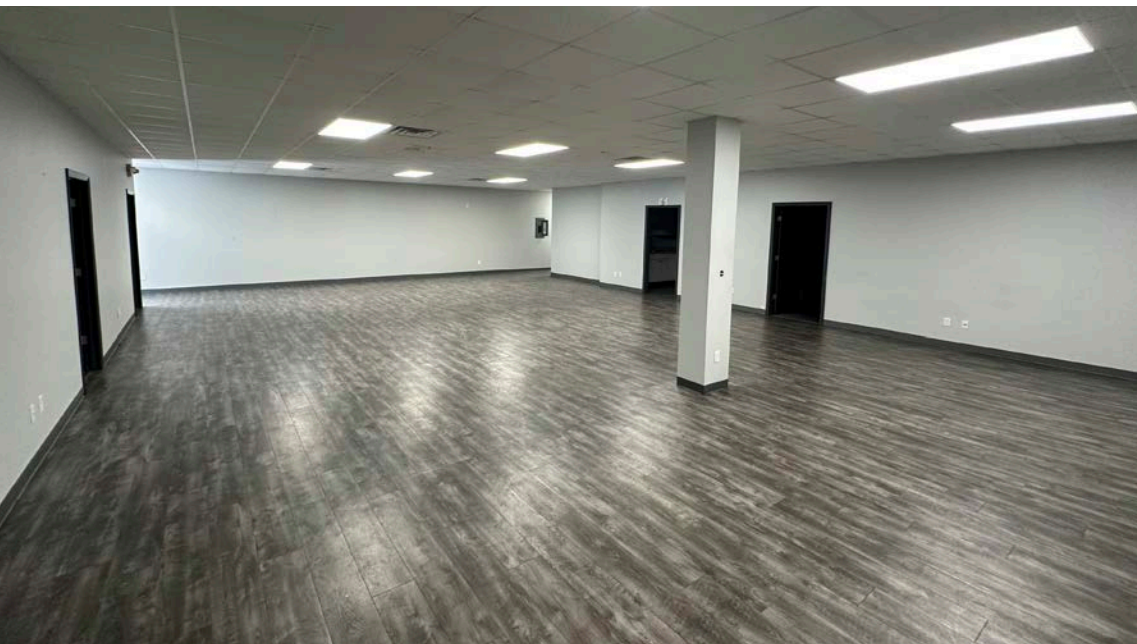
This document/email has been prepared by Colliers for advertising and general information only. Colliers makes no guarantees, representations or warranties of any kind, expressed or implied, regarding the information including, but not limited to, warranties of content, accuracy and reliability. Any interested party should undertake their own inquiries as to the accuracy of the information. Colliers excludes unequivocally all inferred or implied terms, conditions and warranties arising out of this document and excludes all liability for loss and damages arising there from. This publication is the copyrighted property of Colliers and / or its licensor(s). © 2025. All rights reserved. This communication is not intended to cause or induce breach of an existing listing agreement. Colliers International Group Inc.

FOR LEASE

Available Suites

Suites can be combined

Suite 109	4,356 SF @ \$6.35/SF	1 Dock High Door, 1 Ground Level Door	Available 2026 (TBD)
Suite 114-118	21,780 SF @ \$5.50/SF	3 Dock High Door, 5 Ground Level Door	Available to lease
Suite 119-120	8,712 SF @ \$6.35/SF	2 Dock High Door, 2 Ground Level Door	June 2026
Suite 201	4,356 SF @ \$6.35/SF	1 Dock High Door, 1 Ground Level Door	Available to lease
Suite 203	4,356 SF @ \$6.35/SF	1 Dock High Door, 1 Ground Level Door	Available to lease
Suite 204	4,356 SF @ \$6.35/SF	1 Dock High Door, 1 Ground Level Door	September 2026
Suite 205	4,356 SF @ \$6.35/SF	1 Dock High Door, 1 Ground Level Door	September 2026
Suite 206	4,356 SF @ \$6.35/SF	1 Dock High Door, 1 Ground Level Door	Available to lease
Suite 209-210	8,712 SF @ \$6.35/SF	2 Dock High Door, 2 Ground Level Door	Available to lease
Suite 304-305	1,600 SF @ \$12.00/SF	1 Ground Level Door	Available to lease
Suite 306	800 SF @ \$12.00/SF	1 Ground Level Door	Available to lease
Suite 308	1,600 SF @ \$12.00/SF	1 Ground Level Door	Available to lease
Suite 310	800 SF @ \$12.00/SF	1 Ground Level Door	Available to lease
Suite 311	800 SF @ \$12.00/SF	1 Ground Level Door	Available to lease
Suite 312	800 SF @ \$12.00/SF	1 Ground Level Door	Available to lease
Suite 313	1,600 SF @ \$12.00/SF	1 Ground Level Door	Available to lease
Suite 402	800 SF @ \$12.00/SF	1 Ground Level Door	Available 2026 (TBD)
Suite 404	800 SF @ \$12.00/SF	1 Ground Level Door	Available to lease
Suite 407	800 SF @ \$12.00/SF	1 Ground Level Door	Available to lease



CONTACT US

Justin Bentley, CCIM, SIOR
+1 501 850 0739
justin.bentley@ar.colliers.com

Claire Huchingson
+1 501 372 6161
claire.huchingson@ar.colliers.com

Colliers | Arkansas
1 Allied Drive, Suite 1500
Little Rock, AR 72202
P: +1 501 372 6161
F: +1 501 372 0671

FOR LEASE

Neighborhood Map



Area Demographics

CONTACT US

Justin Bentley, CCIM, SIOR
+1 501 850 0739
justin.bentley@ar.colliers.com

Claire Huchingson
+1 501 372 6161
claire.huchingson@ar.colliers.com

Colliers | Arkansas
1 Allied Drive, Suite 1500
Little Rock, AR 72202
P: +1 501 372 6161
F: +1 501 372 0671



Estimated Population (2025)

1 Mile	3 Mile	5 Mile
3,766	52,898	113,636



Estimated Households (2025)

1 Mile	3 Mile	5 Mile
1,843	24,899	51,644



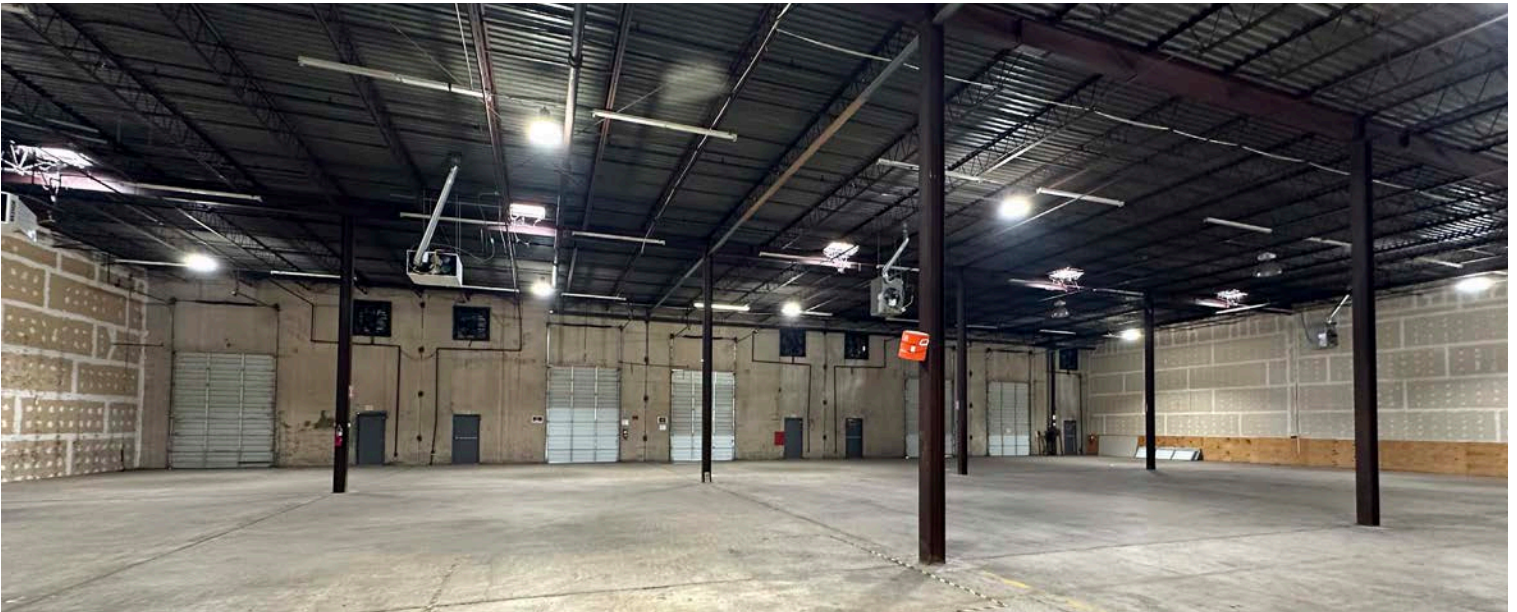
Est. Avg Household Income (2025)

1 Mile	3 Mile	5 Mile
\$57,028	\$75,799	\$88,855

This document/email has been prepared by Colliers for advertising and general information only. Colliers makes no guarantees, representations or warranties of any kind, expressed or implied, regarding the information including, but not limited to, warranties of content, accuracy and reliability. Any interested party should undertake their own inquiries as to the accuracy of the information. Colliers excludes unequivocally all inferred or implied terms, conditions and warranties arising out of this document and excludes all liability for loss and damages arising there from. This publication is the copyrighted property of Colliers and /or its licensor(s). © 2025. All rights reserved. This communication is not intended to cause or induce breach of an existing listing agreement. Colliers International Group Inc.

FOR LEASE

Property Photos



CONTACT US

Justin Bentley, CCIM, SIOR
+1 501 850 0739
justin.bentley@ar.colliers.com

Claire Huchingson
+1 501 372 6161
claire.huchingson@ar.colliers.com

Colliers | Arkansas
1 Allied Drive, Suite 1500
Little Rock, AR 72202
P: +1 501 372 6161
F: +1 501 372 0671



This document/email has been prepared by Colliers for advertising and general information only. Colliers makes no guarantees, representations or warranties of any kind, expressed or implied, regarding the information including, but not limited to, warranties of content, accuracy and reliability. Any interested party should undertake their own inquiries as to the accuracy of the information. Colliers excludes unequivocally all inferred or implied terms, conditions and warranties arising out of this document and excludes all liability for loss and damages arising there from. This publication is the copyrighted property of Colliers and /or its licensor(s). © 2025. All rights reserved. This communication is not intended to cause or induce breach of an existing listing agreement. Colliers International Group Inc.