

FOR LEASE

Carriage Plaza

2001 W Main Street, Norman, OK 73069

RETAIL

2,160 SF Available



Base Rent: \$18.00 psf
Estimated NNNs: \$6.06 psf

Property Features

- Upscale center on one of the primary streets in Norman
- Great visibility from Main Street; 30,000+/- vehicles pass daily
- 2 miles from University of Oklahoma campus
- Well located; easily accessible from both east and west Norman
- 121 parking spaces. Designated turn lane into shopping center.
- Shopping center tenants include: Cayman's, City Bites, Bella Rose Bridal, The Clothing Bar, Occasions, Edward Jones, Aura Beauty Studio, and Moxie Shop

Population

1 Mile	10,552
3 Mile	65,682
5 Mile	100,031

Average Household Income

1 Mile	\$55,194
3 Mile	\$62,100
5 Mile	\$61,122



FOR MORE INFORMATION:

Troy Humphrey (405) 219-7500 thumphrey@LRCRE.com

114 N.W. 6th Street, Suite 206
Oklahoma City, OK 73102
Office: 405.231.5700
www.LRCRE.com

The information above is believed to be accurate and reliable but is not warranted and may change without notice. Land Run Commercial Real Estate Advisors, LLC makes no guarantees, warranties or representations about the property and recommends tenants independent investigation as to the accuracy thereof.

FOR LEASE

Carriage Plaza

2001 W Main Street, Norman, OK 73069

RETAIL

2,160 SF Available



FOR MORE INFORMATION:

Troy Humphrey (405) 219-7500 thumphrey@LRCRE.com

114 N.W. 6th Street, Suite 206
Oklahoma City, OK 73102
Office: 405.231.5700
www.LRCRE.com

The information above is believed to be accurate and reliable but is not warranted and may change without notice. Land Run Commercial Real Estate Advisors, LLC makes no guarantees, warranties or representations about the property and recommends tenants independent investigation as to the accuracy thereof.

FOR LEASE

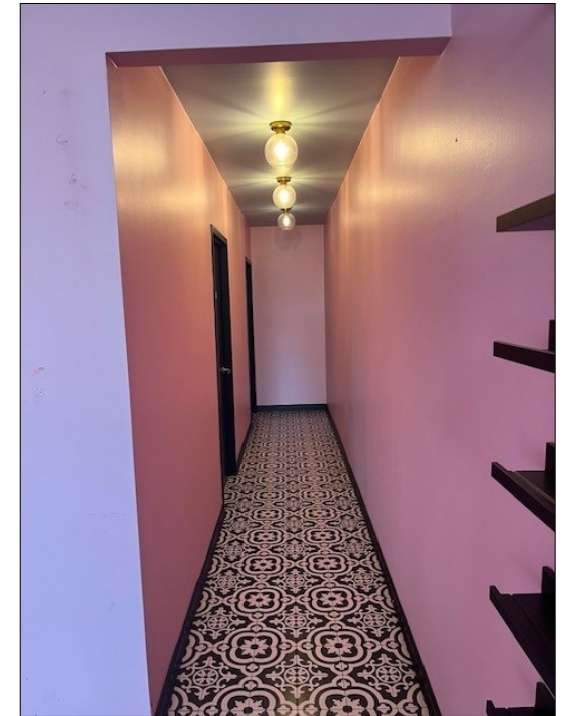
Carriage Plaza

2001 W Main Street, Norman, OK 73069

RETAIL

2,160 SF Available

Suite 111



FOR MORE INFORMATION:

Troy Humphrey (405) 219-7500 thumphrey@LRCRE.com

The information above is believed to be accurate and reliable but is not warranted and may change without notice. Land Run Commercial Real Estate Advisors, LLC makes no guarantees, warranties or representations about the property and recommends tenants independent investigation as to the accuracy thereof.

114 N.W. 6th Street, Suite 206
Oklahoma City, OK 73102
Office: 405.231.5700
www.LRCRE.com

FOR LEASE

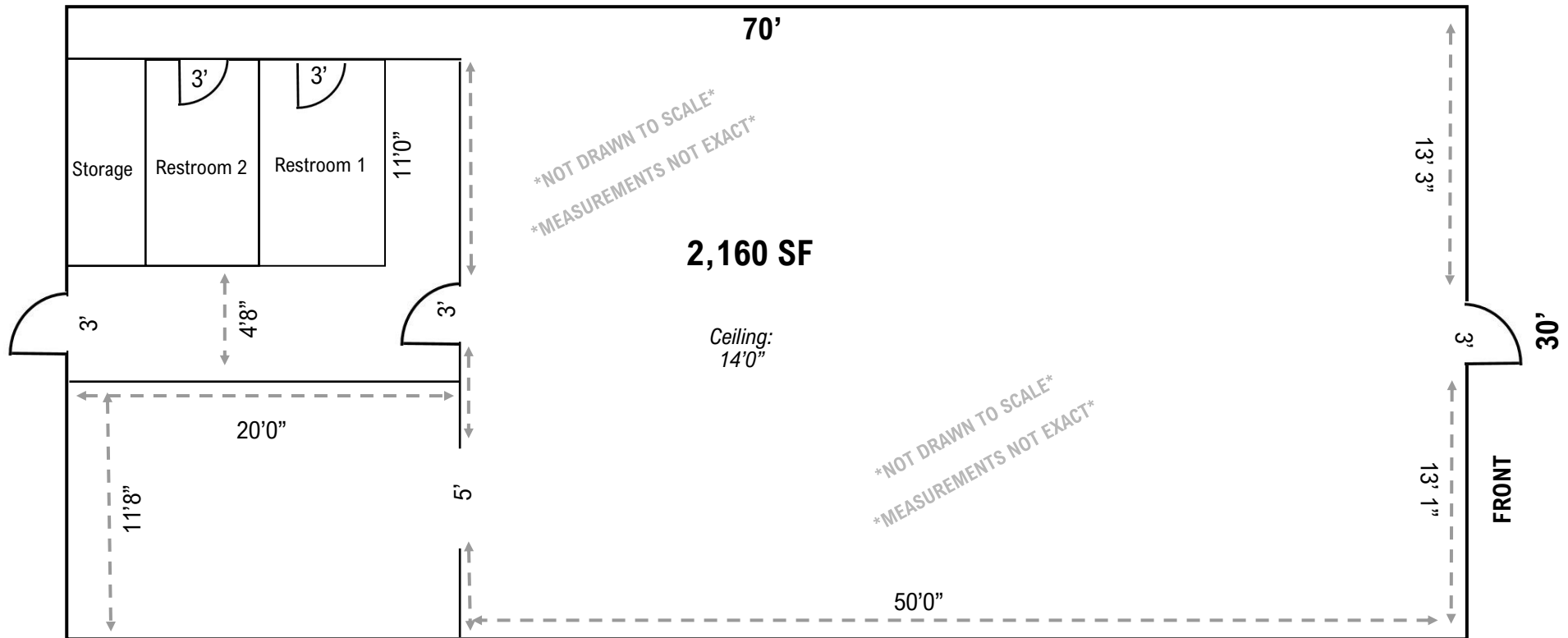
Carriage Plaza

2001 W Main Street, Norman, OK 73069

RETAIL

2,160 SF Available

Floor Plan



FOR MORE INFORMATION:

Troy Humphrey (405) 219-7500 thumphrey@LRCRE.com

114 N.W. 6th Street, Suite 206
Oklahoma City, OK 73102
Office: 405.231.5700
www.LRCRE.com

The information above is believed to be accurate and reliable but is not warranted and may change without notice. Land Run Commercial Real Estate Advisors, LLC makes no guarantees, warranties or representations about the property and recommends tenants independent investigation as to the accuracy thereof.

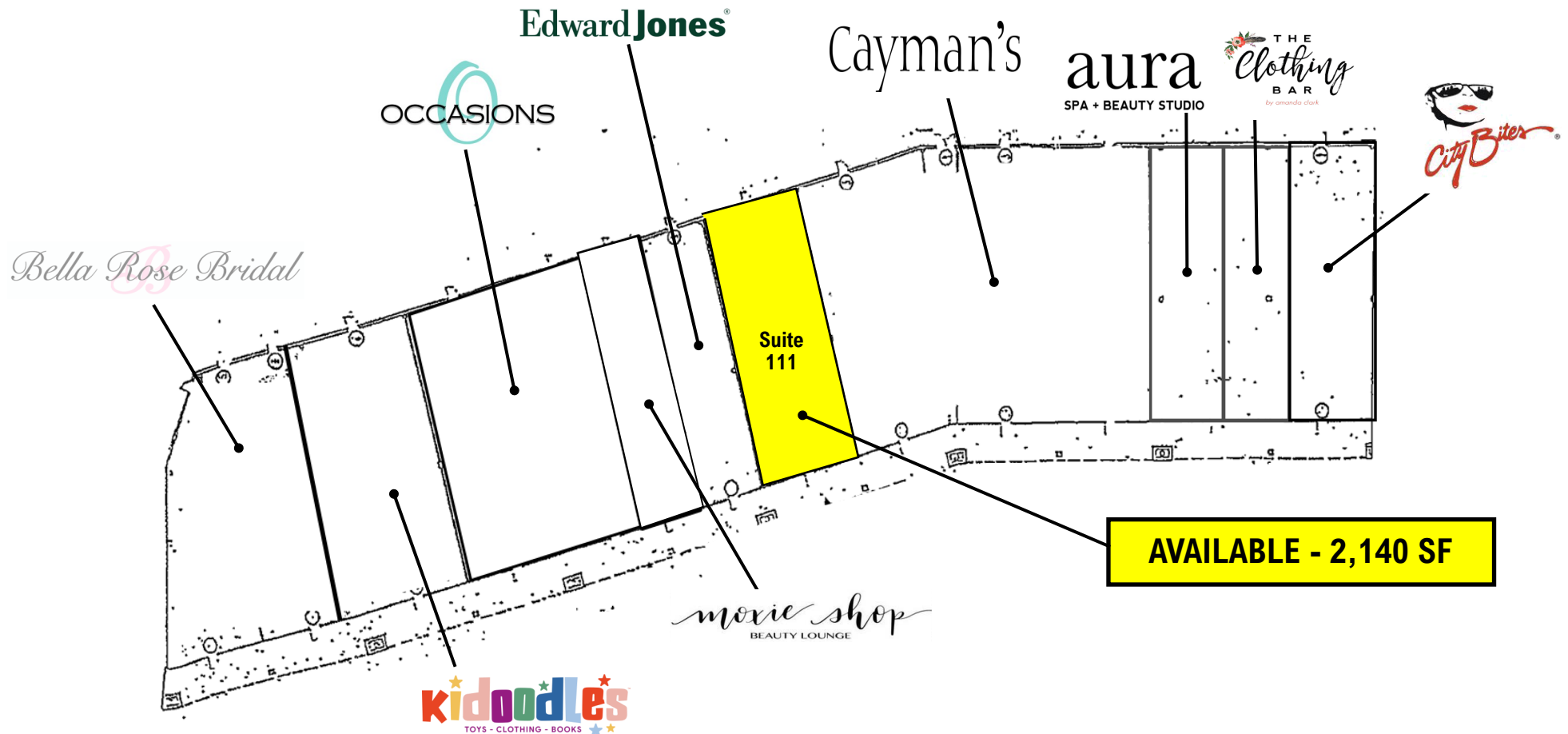
FOR LEASE

Carriage Plaza

2001 W Main Street, Norman, OK 73069

RETAIL

2,160 SF Available



FOR MORE INFORMATION:

Troy Humphrey (405) 219-7500 thumphrey@LRCRE.com

114 N.W. 6th Street, Suite 206
Oklahoma City, OK 73102
Office: 405.231.5700
www.LRCRE.com

The information above is believed to be accurate and reliable but is not warranted and may change without notice. Land Run Commercial Real Estate Advisors, LLC makes no guarantees, warranties or representations about the property and recommends tenants independent investigation as to the accuracy thereof.

FOR LEASE

Carriage Plaza

2001 W Main Street, Norman, OK 73069

RETAIL

2,160 SF Available



FOR MORE INFORMATION:

Troy Humphrey (405) 219-7500 thumphrey@LRCRE.com

114 N.W. 6th Street, Suite 206
Oklahoma City, OK 73102
Office: 405.231.5700
www.LRCRE.com

The information above is believed to be accurate and reliable but is not warranted and may change without notice. Land Run Commercial Real Estate Advisors, LLC makes no guarantees, warranties or representations about the property and recommends tenants independent investigation as to the accuracy thereof.