



# TURNKEY OFFICE FOR PROFESSIONAL FIRM

2 North 20th Street, Birmingham, AL 35203



Visit Our Website

**2NORTH**  
twentieth street



**ASKING RATE:**  
\$22.50/rsf Full Service



**AVAILABLE SPACE:**  
4,360 SF - 10th Floor



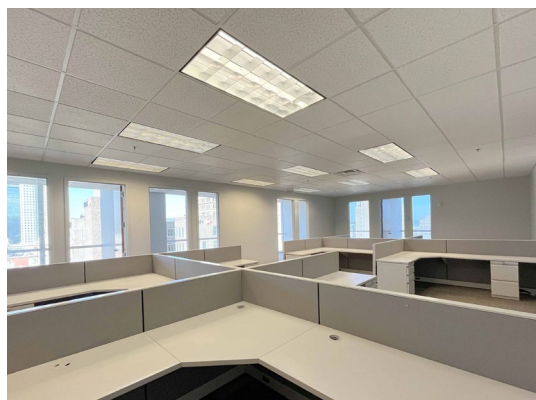
**LOCATION:**  
Centrally located  
between CBD and  
UAB with easy highway  
interstate access



**PARKING:**  
1:1000 RSF ratio  
Additional off-site  
parking can be  
accommodated



**ON-SITE  
MANAGEMENT:**  
On-site security,  
engineer & management



**TANNER SUMNERS**

tsumners@harbertrealty.com | 205.458.8103

**For More Information: HarbertRealty.com**  
2 North 20th Street, #1700, Birmingham, AL 35203

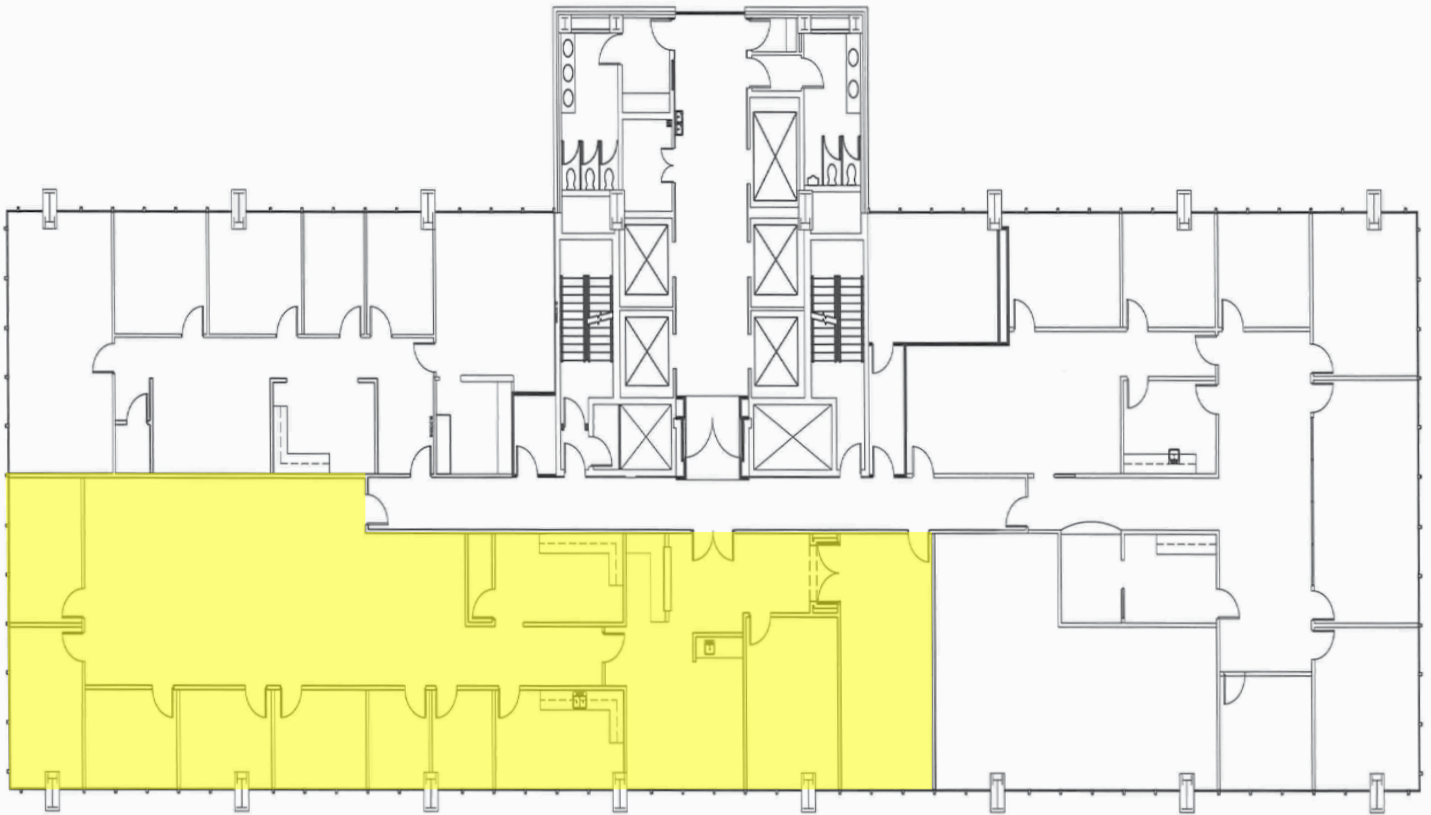
The information contained herein has been obtained from sources deemed reliable, however, HRS makes no guarantees, warranties or representation as to its completeness or accuracy thereof. The presentation of this property is submitted subject to errors, omissions, change of price or conditions, prior to sale or lease or withdrawal without notice.



# OFFICE SPACE FOR LEASE

2 North 20th Street, Birmingham, AL 35203

**2NORTH**  
twentieth street



**4,360 SF - 10TH FLOOR**



**HARBERT**  
REALTY SERVICES

**TANNER SUMNERS**

tsumners@harbertrealty.com | 205.458.8103

**For More Information: [HarbertRealty.com](http://HarbertRealty.com)**

**2 North 20th Street, #1700, Birmingham, AL 35203**

The information contained herein has been obtained from sources deemed reliable, however, HRS makes no guarantees, warranties or representation as to its completeness or accuracy thereof. The presentation of this property is submitted subject to errors, omissions, change of price or conditions, prior to sale or lease or withdrawal without notice.



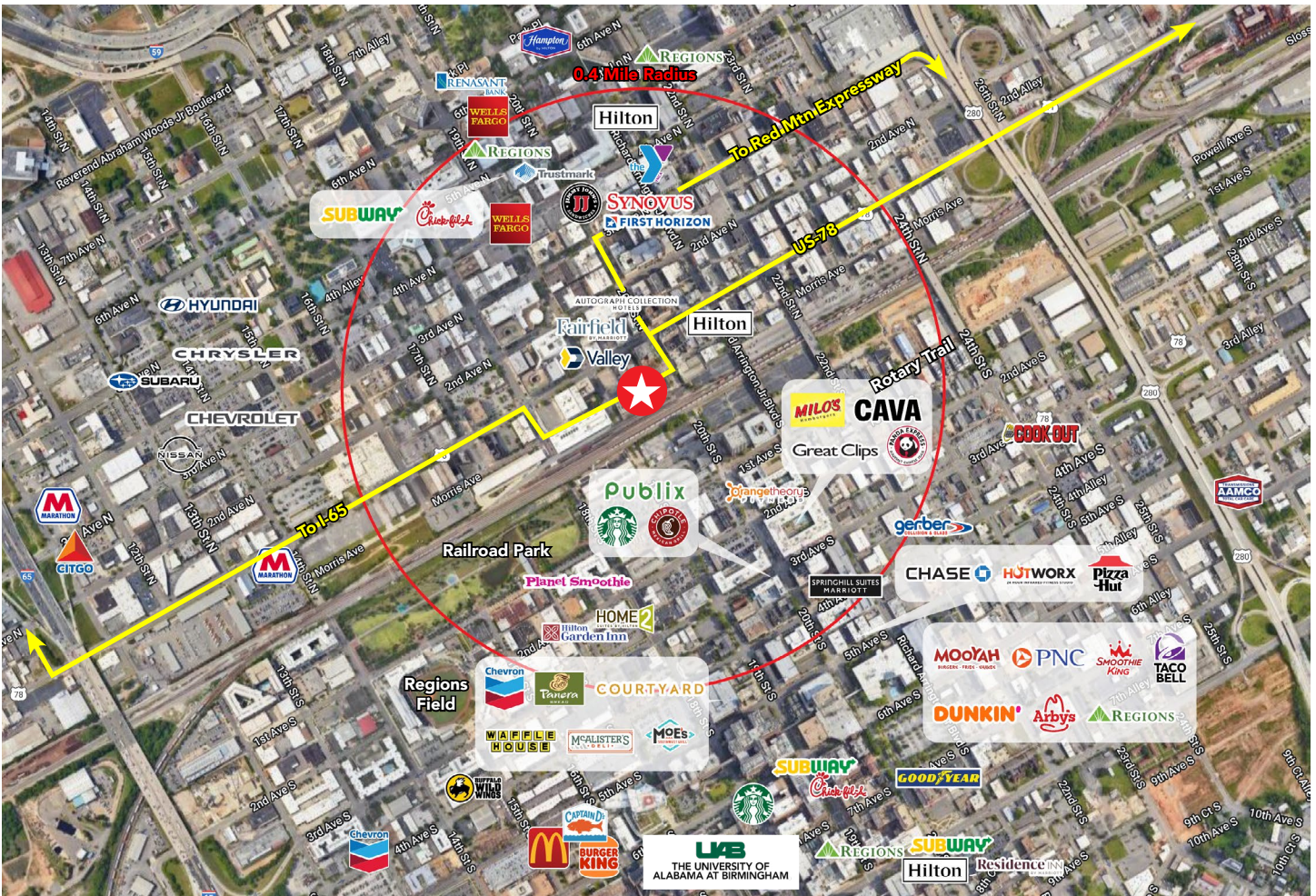
# OFFICE SPACE FOR LEASE

2 North 20th Street, Birmingham, AL 35203

2NORTH  
twentieth street

## IDEAL LOCATION POSITIONED CENTRALLY BETWEEN UAB AND CBD

LESS THAN 4 BLOCKS (0.4 MILES) FROM GROCERY, COFFEE, FITNESS, FINE DINING, FAST CASUAL DINING, BANKS, HOTELS, ENTERTAINMENT, PARKS, TRANSPORTATION, AND MORE!



"WALKERS PARADISE"  
SCORE OF 90 ACCORDING  
TO WALKSCORE.COM

63K

PRIMARY JOBS  
IN DOWNTOWN

\$12.1B

UAB 2022 ECONOMIC  
IMPACT IN AL



HARBERT  
REALTY SERVICES

TANNER SUMNERS

tsumners@harbertrealty.com | 205.458.8103

For More Information: [HarbertRealty.com](http://HarbertRealty.com)  
2 North 20th Street, #1700, Birmingham, AL 35203

The information contained herein has been obtained from sources deemed reliable, however, HRS makes no guarantees, warranties or representation as to its completeness or accuracy thereof. The presentation of this property is submitted subject to errors, omissions, change of price or conditions, prior to sale or lease or withdrawal without notice.