

SOUTHEASTERN

DEVELOPMENT • BROKERAGE • CONSULTING



AUGUSTA CORPORATE CENTER

2743 Perimeter Pkwy | Augusta, GA 30909

----- **FOR LEASE** -----

2,500 SQFT TO 16,000 SQFT | Starting at \$24.00/SF/YR

Jonathan M. Crawford, *CCIM, MBA*

706.854.6738

Jonathan.Crawford@southeastern.company

CONTACT:



SOUTHEASTERN

DEVELOPMENT • BROKERAGE • CONSULTING

2743 Perimeter Pkwy | Augusta, GA 30909 | 706.722.5565 | www.southeastern.company

EXECUTIVE SUMMARY



OFFERING SUMMARY

Space Available: 2,500 to 16,000 SF

Starting Rate: \$24.00/SF/YR (Full Service)

Base Term: 60 Months

Parking: 585 Spaces (Surface & Covered)

Load Factor: Yes (1.20)

PROPERTY OVERVIEW

Augusta Corporate Centre is Augusta's largest suburban Class A multi-tenant office buildings. Our buildings offer the flexibility to lease smaller suites from 1,500 SF. Conveniently located off of I-20 (88,411 VPD) and I-520 (87,100), Augusta Corporate Centre provides tenants with easy access to the entire Central Savannah River Area, Fort Gordon, numerous amenities, the airport, and local workforce.

LOCATION OVERVIEW

DIRECTIONS: Coming from Atlanta, take I-20 East and exit onto I-520 East. Take first exit onto Wheeler Road. From Columbia, take I-20 West to exit-195 and turn left onto Wheeler Road. Continue to Perimeter Parkway. The Centre is located adjacent to the Double Tree hotel along Perimeter Parkway.

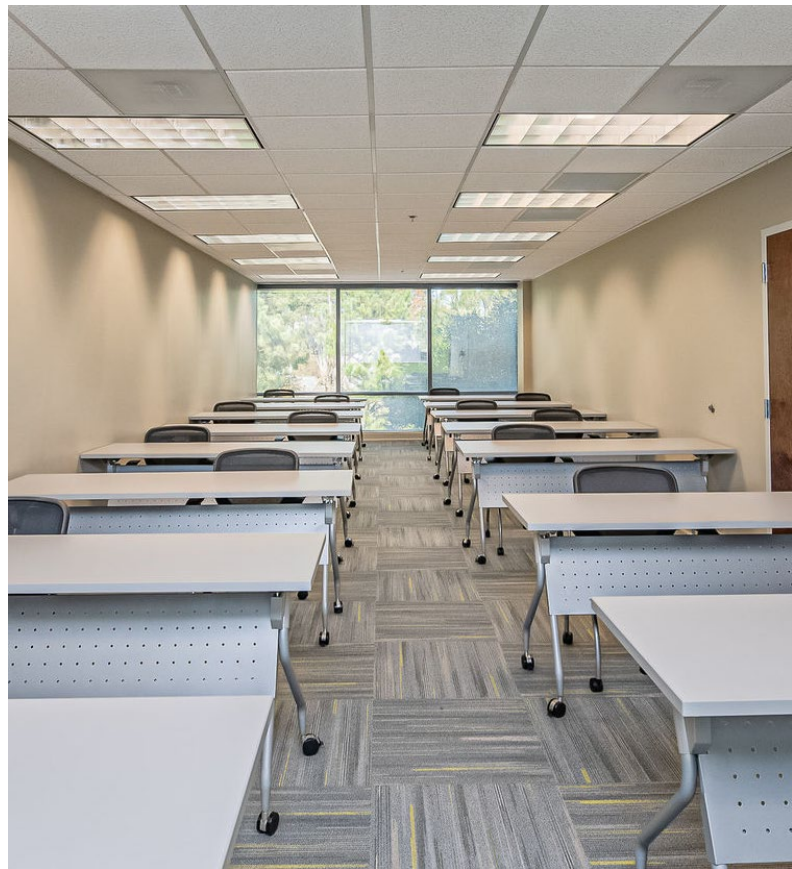


[**Augusta Corporate Centre Video – Click Here!**](#)

INTERIOR BUILDOUTS

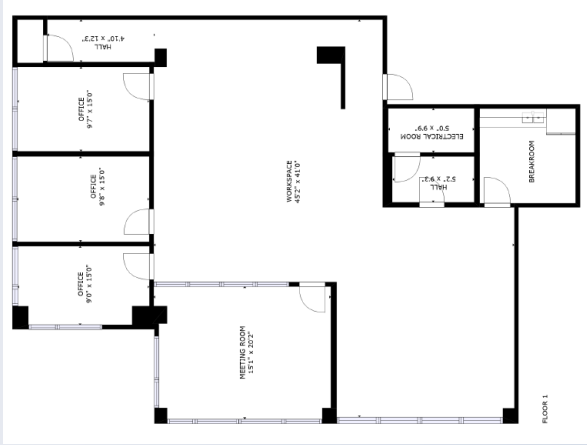


INTERIOR BUILDOUTS



AVAILABLE SUITES

BLDG 200, SUITE 125 | 2,572 RSF



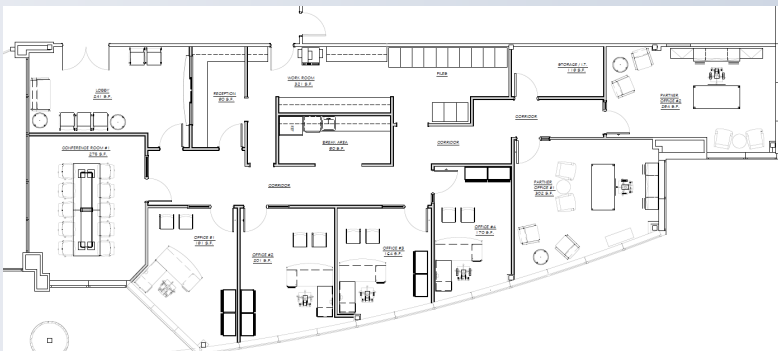
Suite 125 features three (3) private offices, conference room, large workspace, storage /IT room, and breakroom that can be customized to fit tenant's specific needs.

BLDG 200, SUITE 102 | 3,580 RSF



Suite 102 features several large offices, conference room, kitchen and storage room that can be customized to fit tenant's specific needs.

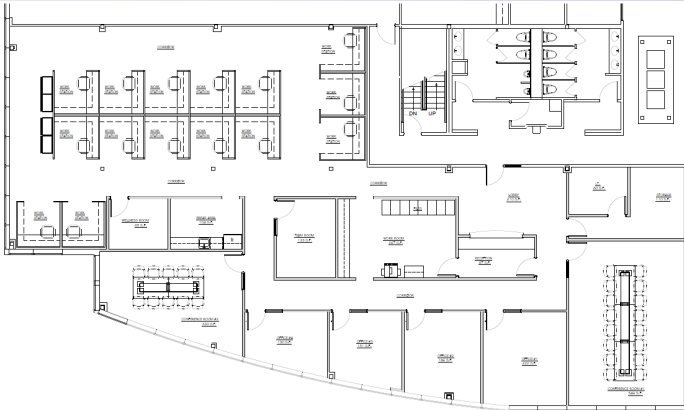
BLDG 200, SUITE 200 | 3,571 RSF



Suite 200 was recently vacated and can be customized to fit tenant's specific needs.

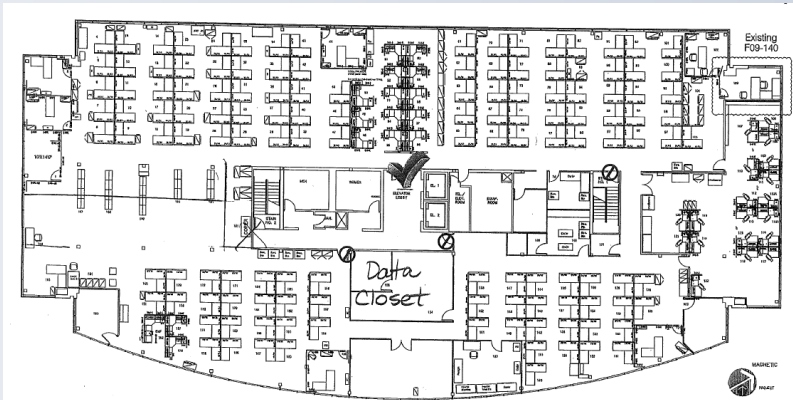
AVAILABLE SUITES

BLDG 200, SUITE 300 | 6,275 RSF



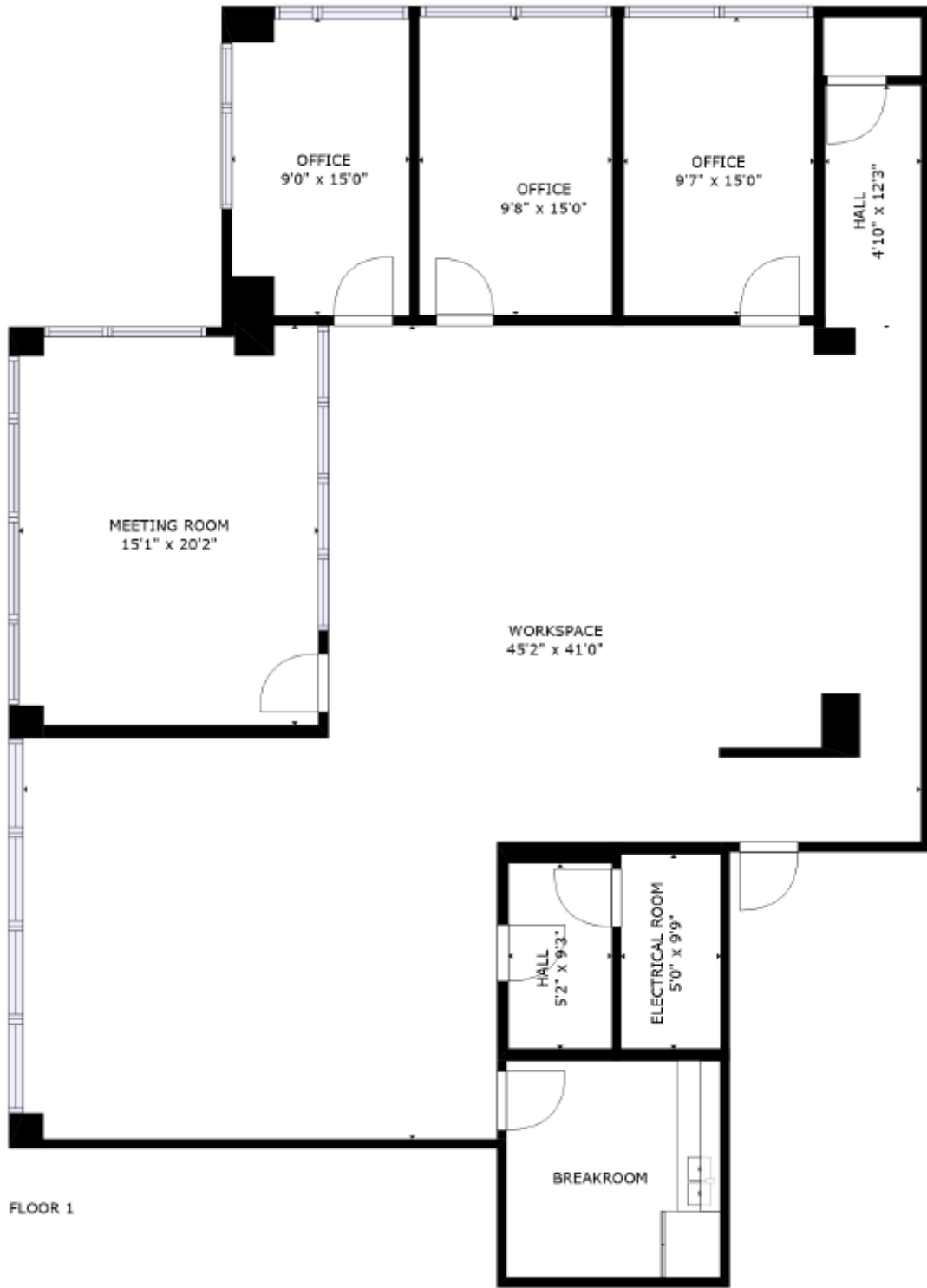
Suite 300 can be customized to fit tenant's specific needs.

BLDG 200, SUITE 301 | 18,020 RSF

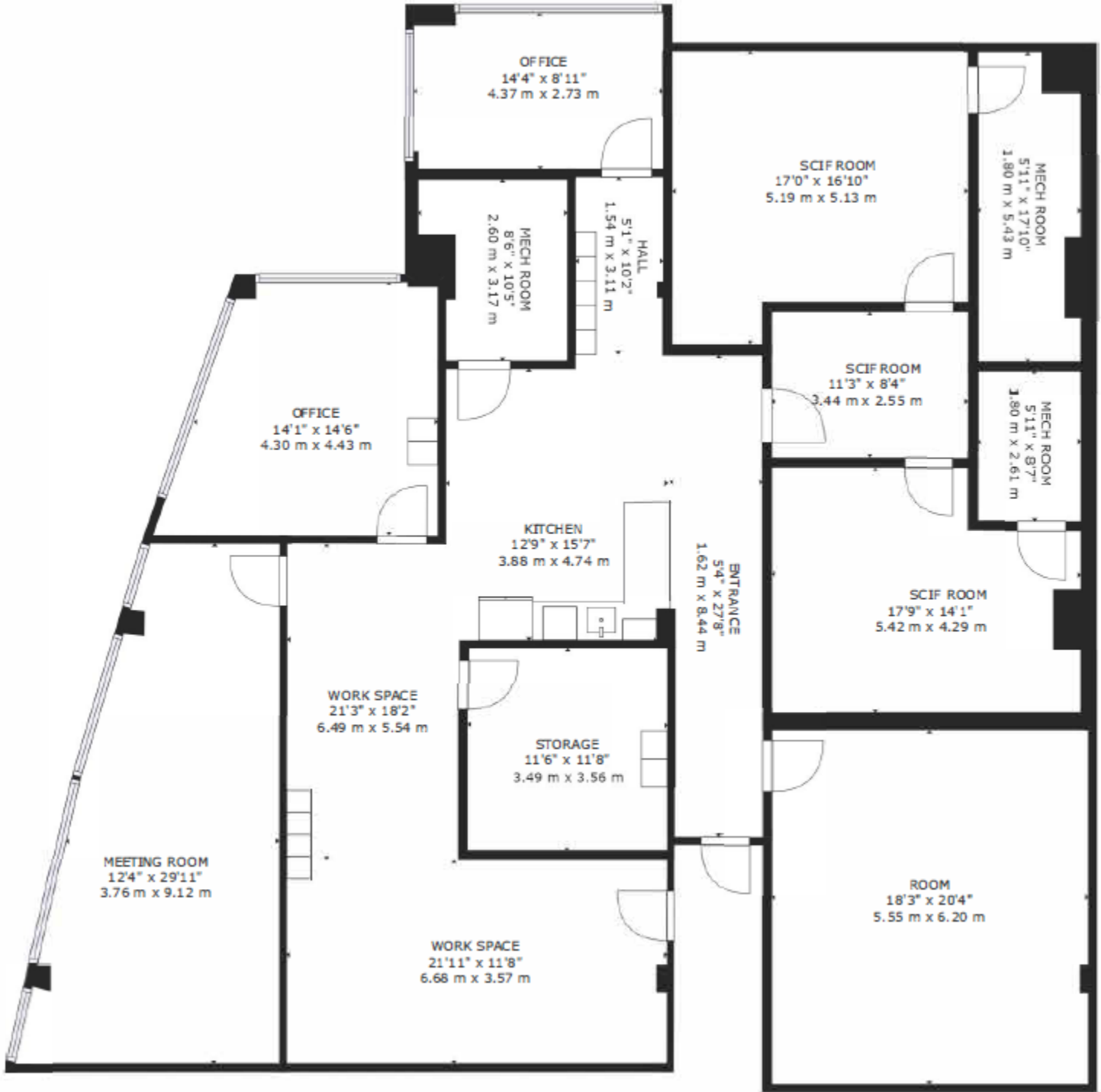


Suite 301 can be customized to fit tenant's specific needs.

[Virtual Tour – Click Here!](#)



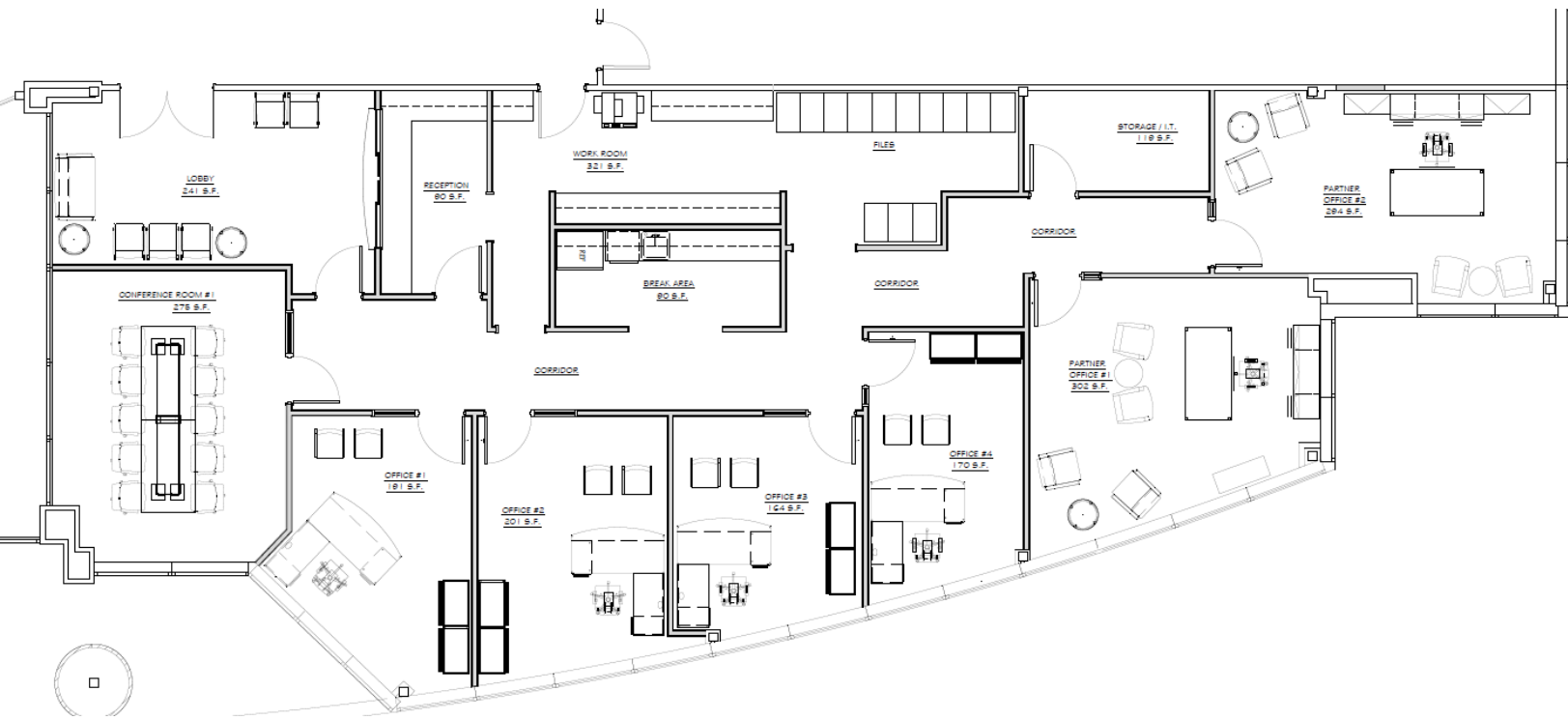
[Virtual Tour – Click Here!](#)



BLDG 200, SUITE 102 | 3,580 RSF

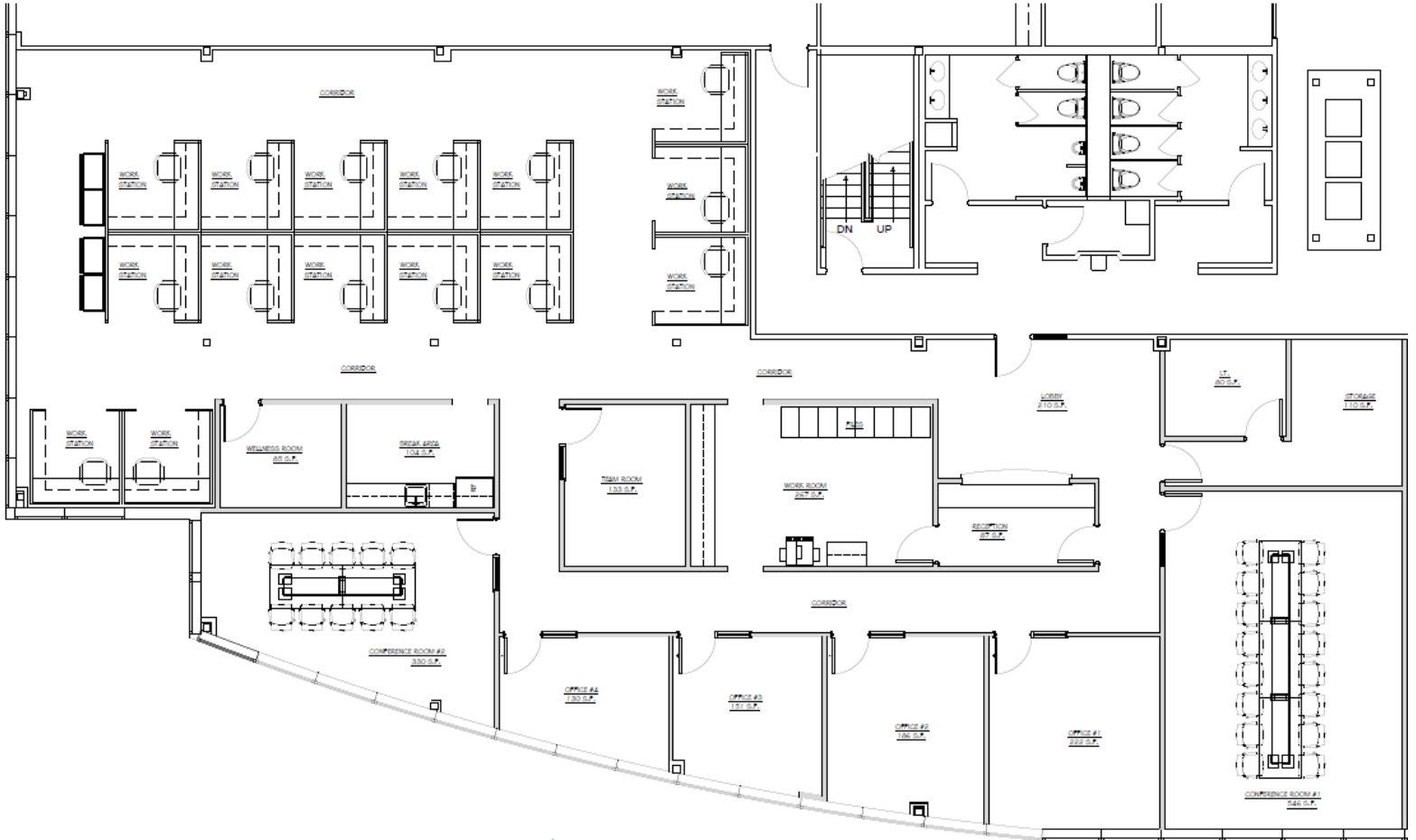
SUITE 200 FLOOR PLAN

[Virtual Tour – Click Here!](#)



BLDG 200, SUITE 200 | 3,571 RSF

CONCEPT SPACE PLAN



AERIAL MAP



AUGUSTA CORPORATE CENTER

2743 Perimeter Pkwy

Augusta, GA 30909



AUGUSTA CORPORATE CENTER

2743 Perimeter Pkwy | Augusta, GA 30909

----- **FOR LEASE** -----

2,500 SQFT TO 16,000 SQFT | Starting at \$24.00/SF/YR

Jonathan M. Crawford, CCIM, MBA

706.854.6738

Jonathan.Crawford@southeastern.company

CONTACT:



SOUTHEASTERN

DEVELOPMENT • BROKERAGE • CONSULTING

2743 Perimeter Pkwy | Augusta, GA 30909 | 706.722.5565 | www.southeastern.company