

FRANKLIN VILLAGE PLAZA



32716 & 32734 Franklin Road
Franklin, MI 48025



Retail Opportunity
5,960 ± SF

FOR SALE/LEASE

PROPERTY HIGHLIGHTS



Description

Rare value-add owner/user opportunity available for purchase in the Village of Franklin. Franklin is a highly affluent and desirable area known for its charm, high income levels, and dense population. This property is uniquely positioned to service its local community with adequate parking for its tenants and customers.

Address

32716 & 32734 Franklin Road
Franklin, MI 48025

Property Features

- 5,960 ± SF/.75 Acre Lot
- 1,464 ± SF & 952 ± SF Available for Lease
- Affluent Community
- Excellent Road Visibility
- 25 ± Parking Spaces Available
- Zoning - General Commercial

Sale Price

\$1,200,000

Asking Rent

\$22/SF plus NNN

Traffic Counts

W. 14 Mile Rd - 5,430+ cpd

Franklin Rd - 6,382+ cpd

Demographics

	1 MILE	3 MILES	5 MILES
POPULATION:	4,124	53,886	172,065
HOUSEHOLDS:	1,553	23,430	71,641
AVG. HOUSEHOLD INCOME:	\$300,617	\$173,140	\$184,427
DAYTIME POPULATION:	2,334	66,652	204,929

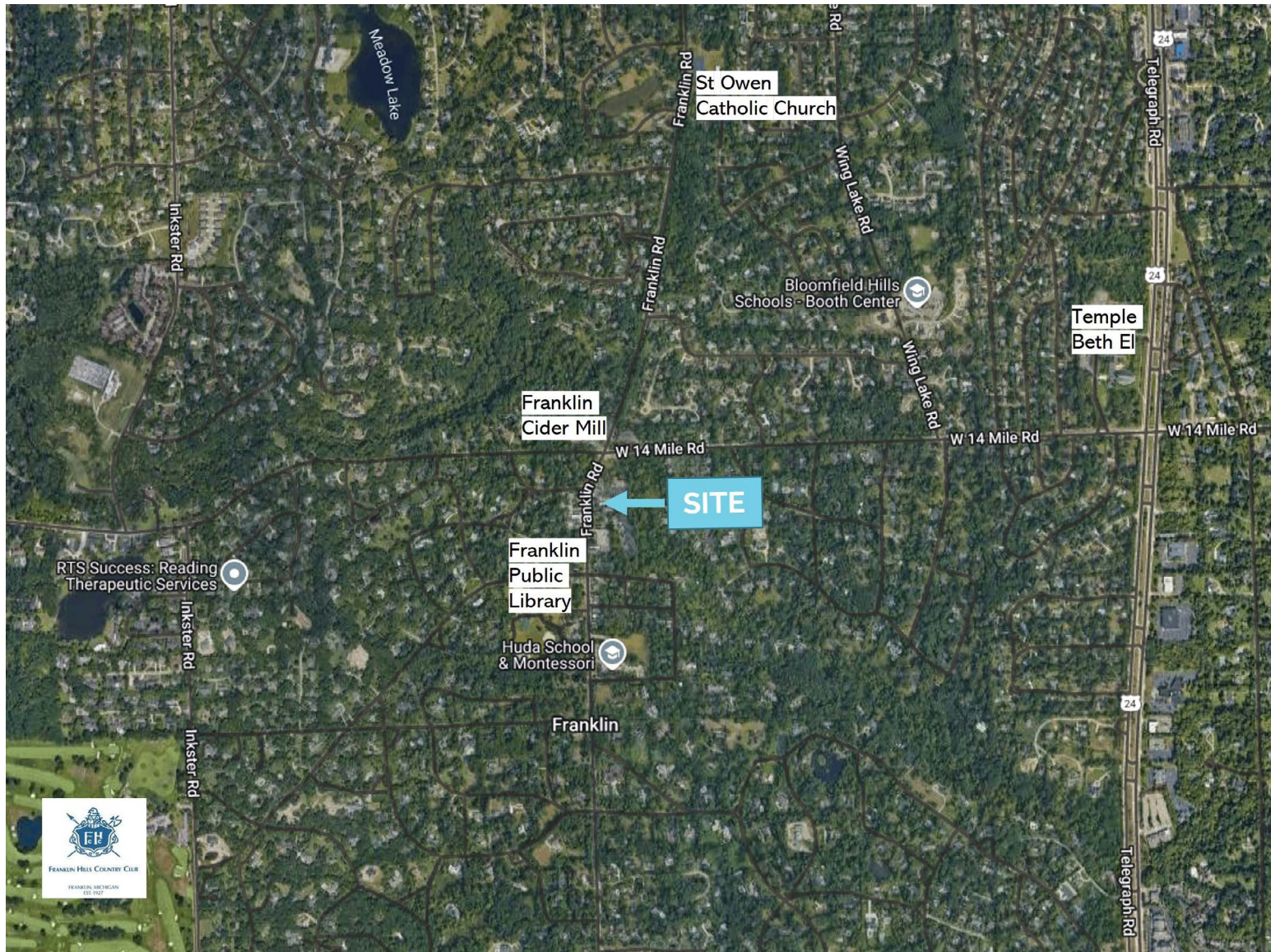
The information contained herein has been obtained through sources deemed reliable by On Q Commercial Real Estate but cannot be guaranteed for its accuracy. We recommend to the buyer or lessee that any information, which is of special interest, should be obtained through independent verification. ALL MEASUREMENTS ARE APPROXIMATE.

MICRO AERIAL



The information contained herein has been obtained through sources deemed reliable by On Q Commercial Real Estate but cannot be guaranteed for its accuracy. We recommend to the buyer or lessee that any information, which is of special interest, should be obtained through independent verification. ALL MEASUREMENTS ARE APPROXIMATE.

MACRO AERIAL



The information contained herein has been obtained through sources deemed reliable by On Q Commercial Real Estate but cannot be guaranteed for its accuracy. We recommend to the buyer or lessee that any information, which is of special interest, should be obtained through independent verification. ALL MEASUREMENTS ARE APPROXIMATE.



OnQ
COMMERCIAL
REAL ESTATE

JOE QONJA

Principal Broker

C: (248) 977-7799

O: (248) 712-3300

E: joe@onqcre.com

LEO ALLUS

Associate

C: (248) 321-3325

O: (248) 712-3300

E: leo@onqcre.com

100 W. Long Lake Rd. Suite 122 Bloomfield Hills, MI 48304

www.onqcre.com

The information contained herein has been obtained through sources deemed reliable by On Q Commercial Real Estate but cannot be guaranteed for its accuracy. We recommend to the buyer or lessee that any information, which is of special interest, should be obtained through independent verification. ALL MEASUREMENTS ARE APPROXIMATE.