

PROPERTY DETAILS

- 5 offices, conference room, kitchenette, and reception spaces.
- Prime location in downtown Fort Lauderdale.
- High visibility and easy access.
- Surface and covered parking available.
- Close proximity to courthouses and legal facilities.
- Signage available in lobby and on tenant floor.
- Walking distance to Las Olas Blvd amenities (dining, etc.).

ABOUT PROPERTY



PRICE

\$35.00 SF/yr (MG)



YEAR BUILT

1985



AVAILABLE SF

2,310



PARKING

Surface Parking



LOCATION

Downtown Ft. Lauderdale, FL

For more information:

Keith R. Graves, CCIM, SIOR

954.652.2031 | Kgraves@Bergercommercial.Com
bergercommercial.com

Lawrence Oxenberg

954.652.2017 | Loxenberg@Bergercommercial.Com

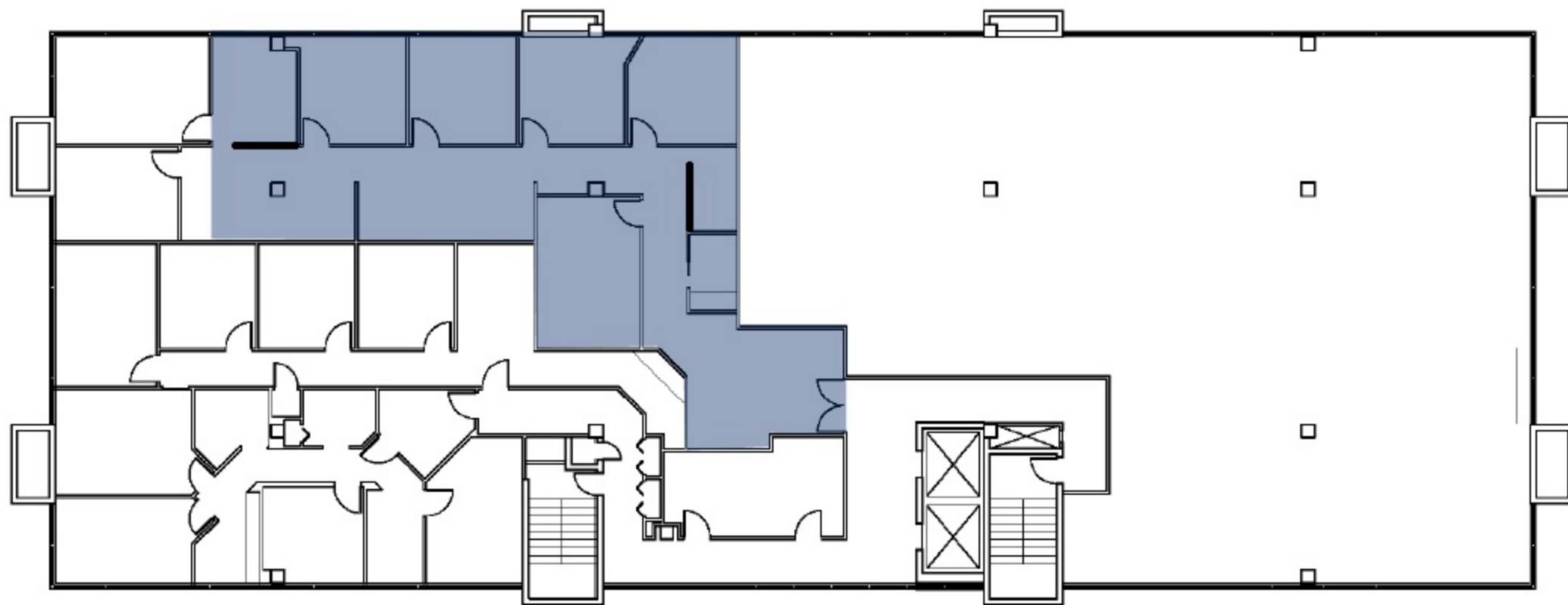


COMMERCIAL BROKERAGE AND PROPERTY MANAGEMENT

888 SE 3rd Avenue, Suites 202 – Floor Plan

+/- 2,310 Square Feet

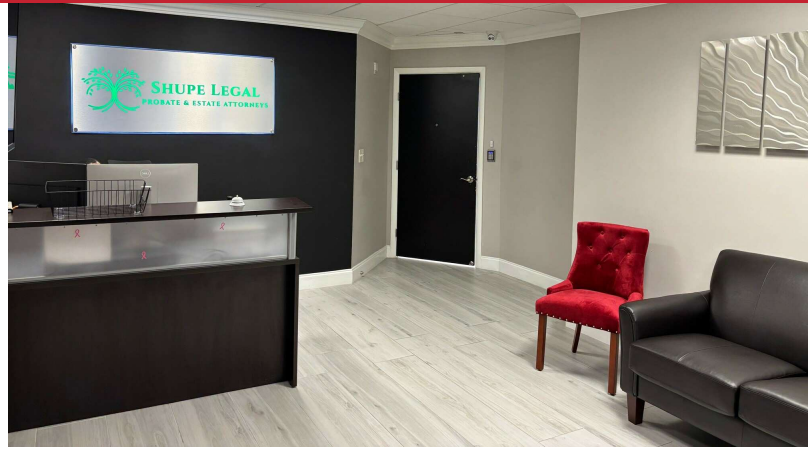
■ Available Area



Not-to-scale/Approximate
(For illustration purposes only)

LEGAL CENTRE

ADDITIONAL PHOTOS



For more information:

Keith R. Graves, CCIM, SIOR

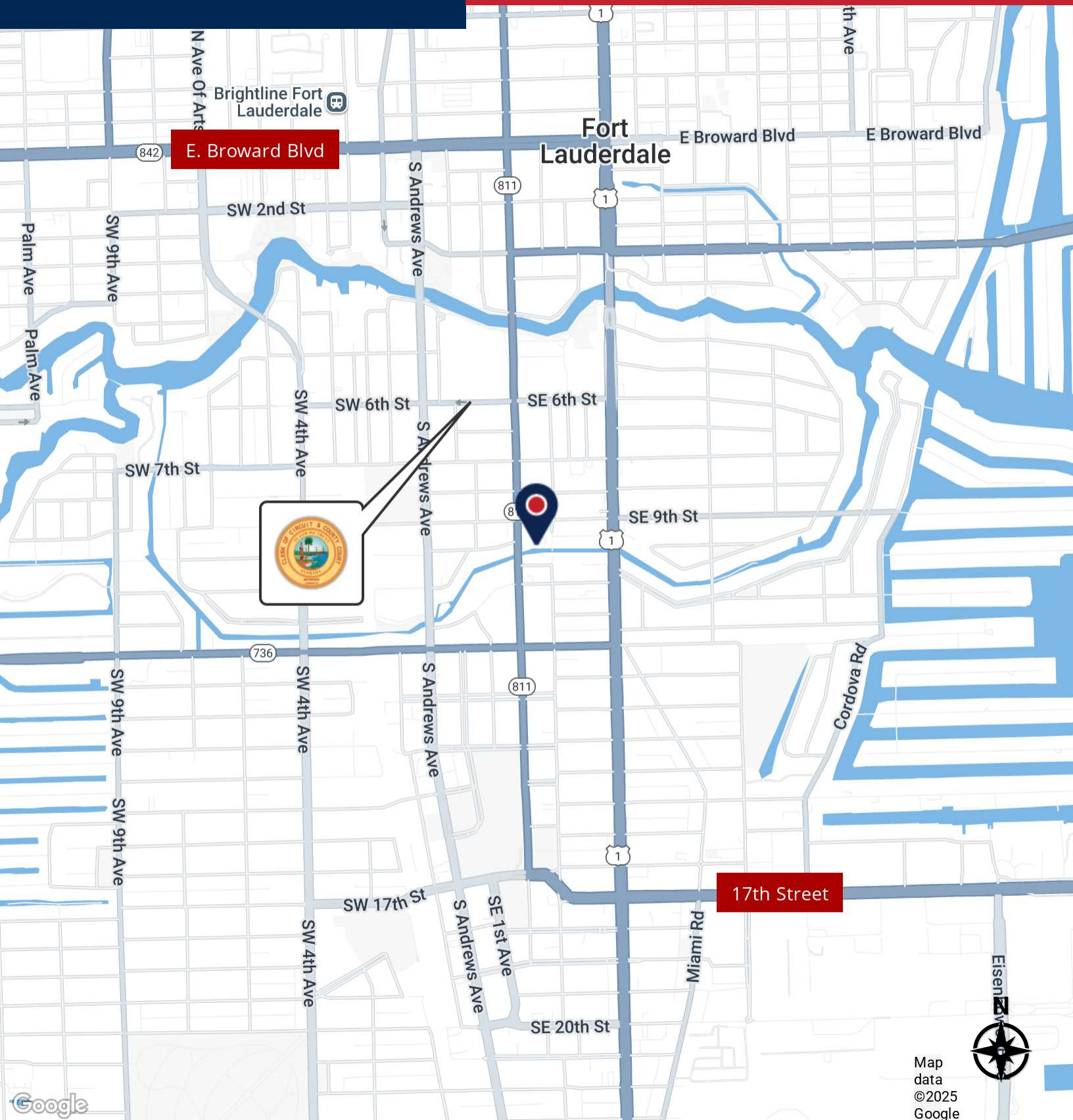
954.652.2031 | Kgraves@Bergercommercial.com
bergercommercial.com

Lawrence Oxenberg

954.652.2017 | Loxenberg@Bergercommercial.com



COMMERCIAL BROKERAGE AND PROPERTY MANAGEMENT



For more information:

Keith R. Graves, CCIM, SIOR

954.652.2031 | Kgraves@Bergercommercial.Com
bergercommercial.com

Lawrence Oxenberg

954.652.2017 | Loxenberg@Bergercommercial.Com



COMMERCIAL BROKERAGE AND PROPERTY MANAGEMENT