



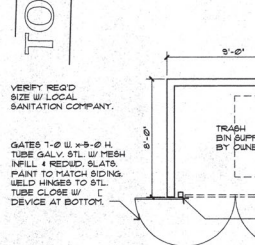
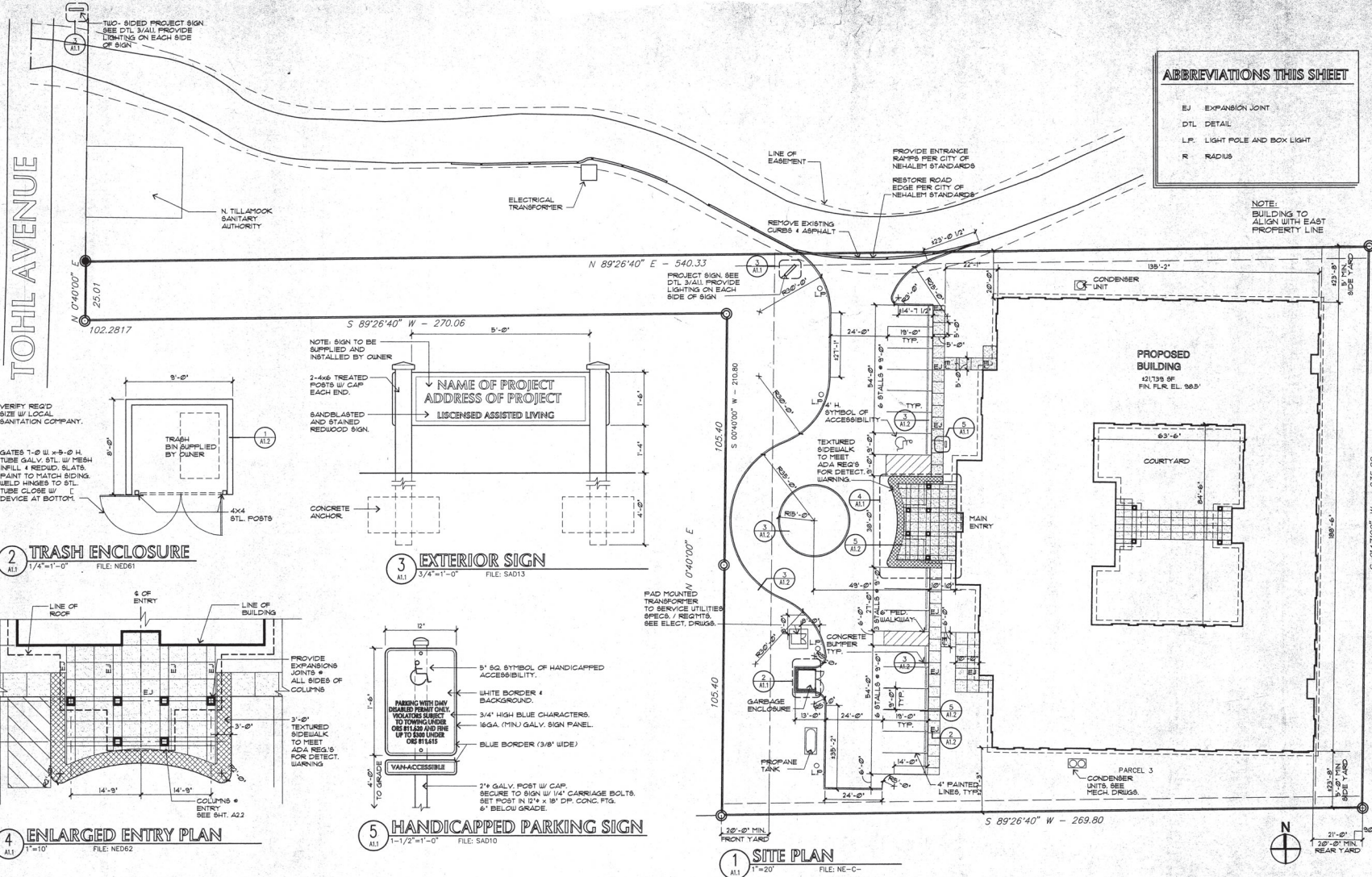
**CHILLES NIELSEN
+ ASSOCIATES
ARCHITECTS**

pc
333 SW FIFTH AVENUE
SUITE 201
PORTLAND, OREGON
97204
503 / 227-1751
FAX: 503 / 274-8634

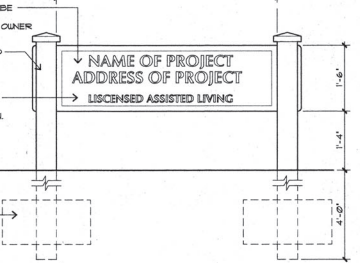
**NEHALEM
ASSISTED LIVING
FACILITY**
for
C.A.R.E., Inc.
NEHALEM, OREGON

ABBREVIATIONS THIS SHEET	
EJ	EXPANSION JOINT
DTL	DETAIL
L.P.	LIGHT POLE AND BOX LIGHT
R	RADIUS

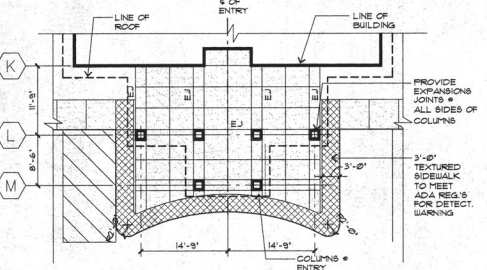
NOTE:
BUILDING TO
ALIGN WITH EAST
PROPERTY LINE



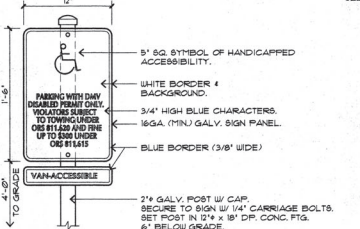
2 TRASH ENCLOSURE
A11 1/4"-1'-0"
FILE: NED61



3 EXTERIOR SIGN
A11 3/4"-1'-0"
FILE: SADI3

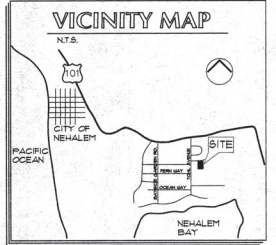


4 ENLARGED ENTRY PLAN
A11 1"-1'-0"
FILE: NED62



5 HANDICAPPED PARKING SIGN
A11 1-1/2"-1'-0"
FILE: SADI0

1 SITE PLAN
A11 1"-20"
FILE: NE-C-



PROJECT INFORMATION	
LEGAL DESCRIPTION	DUELLING UNITS
PARCEL 3, OF PARTITION PLAT 1991-13, NE 1/4, SE 1/4 SECTION 28 T. 3 N., R13 W. WM, TILLAMOOK COUNTY, OREGON	ONE BEDROOM 10
ZONING: R-3 - MEDIUM DENSITY RESIDENTIAL	STUDIO 24
BUILDING CODE: UBC 1994 - OSBC 1996	TOTAL 34
OCCUPANCY: BR-2 BLOW (LARGE) 4 A3 (ASSEMBLY)	PARKING
CONSTRUCTION TYPE: TYPE V - 1 HR. RATED W/ RULL SPRINKLERS PER CBC OSBC 1996	ACCESSIBLE 1
ALLOWABLE AREA	STANDARD 19
TABLE 5-C BASE ALLOW 10,500 SF	TOTAL 16
INCREASE FOR 1 STORY (x3) 3,022 SF ALLOWABLE	SITE AREA
9,744 SF ACTUAL (BR-2)	16,431 SF (162 ACRES) 100%
9,585 SF ACTUAL (A3)	BUILDING FOOTPRINT 1,139 SF 3%
	PARKING / LEAVING 10,295 SF 15%
	WALKS 2850 SF 4%
	LANDSCAPE 39,574 SF (21011 SF) 50%

DRAWING INDEX	
ARCHITECTURAL	PLUMBING
A11 SITE PLAN 4 PROJECT INFORMATION	P21 FLOOR PLAN WASTE PLUMBING
A12 TOPOGRAPHIC SURVEY	P22 FLOOR PLAN H4 CU PLUMBING
A13 GRADINGS 4 EROSION CONTROL PLAN	P23 FLOOR PLAN GAS PLUMBING
A14 UTILITY PLAN	P24 DETAILS 4 SCHEDULES PLUMBING
A15 CIVIL NOTES 4 DETAILS	MCHANICAL
A16 SITE DETAILS	M11 HVAC PLAN
A17 FLOOR PLAN	M12 ENLARGED PLANS, DETAILS 4 SCHEDULE
A18 ROOF PLAN	ELECTRICAL
A19 EXTERIOR ELEVATIONS	E116 SITE PLAN
A20 EXTERIOR ELEVATIONS	E12 SCHEDULES NOTES SYMBOLS
A21 BUILDING SECTIONS	E13 LIGHTING FLOOR PLAN
A22 WALL SECTIONS	E14 POWER FLOOR PLAN
A23 WALL TYPES	E15 TYPICAL UNIT PLANS
A24 ENLARGED PLANS 4 DETAILS	E16 ENLARGED KITCHEN LAUNDRY PLAN
A25 INTERIOR ELEVATIONS 4 DETAILS	E17 DETAILS
A26 INTERIOR ELEVATIONS 4 DETAILS	FIRE SPRINKLER
A27 INTERIOR ELEVATIONS 4 DETAILS	F11 FIRST FLOOR PIPING PLAN
A28 INTERIOR ELEVATIONS	F21 ROOF SYSTEM PIPING PLAN
A29 INTERIOR ELEVATIONS	
A30 INTERIOR ELEVATIONS	
A31 INTERIOR ELEVATIONS	
A32 INTERIOR ELEVATIONS	
A33 INTERIOR ELEVATIONS	
A34 INTERIOR ELEVATIONS	
A35 INTERIOR ELEVATIONS	
A36 INTERIOR ELEVATIONS	
A37 INTERIOR ELEVATIONS	
A38 INTERIOR ELEVATIONS	
A39 INTERIOR ELEVATIONS	
A40 INTERIOR ELEVATIONS	
A41 INTERIOR ELEVATIONS	
A42 INTERIOR ELEVATIONS	
A43 INTERIOR ELEVATIONS	
A44 INTERIOR ELEVATIONS	
A45 INTERIOR ELEVATIONS	
A46 INTERIOR ELEVATIONS	
A47 INTERIOR ELEVATIONS	
A48 INTERIOR ELEVATIONS	
A49 INTERIOR ELEVATIONS	
A50 INTERIOR ELEVATIONS	
A51 INTERIOR ELEVATIONS	
A52 INTERIOR ELEVATIONS	
A53 INTERIOR ELEVATIONS	
A54 INTERIOR ELEVATIONS	
A55 INTERIOR ELEVATIONS	
A56 INTERIOR ELEVATIONS	
A57 INTERIOR ELEVATIONS	
A58 INTERIOR ELEVATIONS	
A59 INTERIOR ELEVATIONS	
A60 INTERIOR ELEVATIONS	
A61 INTERIOR ELEVATIONS	
A62 INTERIOR ELEVATIONS	
A63 INTERIOR ELEVATIONS	
A64 INTERIOR ELEVATIONS	
A65 INTERIOR ELEVATIONS	
A66 INTERIOR ELEVATIONS	
A67 INTERIOR ELEVATIONS	
A68 INTERIOR ELEVATIONS	
A69 INTERIOR ELEVATIONS	
A70 INTERIOR ELEVATIONS	
A71 INTERIOR ELEVATIONS	
A72 INTERIOR ELEVATIONS	
A73 INTERIOR ELEVATIONS	
A74 INTERIOR ELEVATIONS	
A75 INTERIOR ELEVATIONS	
A76 INTERIOR ELEVATIONS	
A77 INTERIOR ELEVATIONS	
A78 INTERIOR ELEVATIONS	
A79 INTERIOR ELEVATIONS	
A80 INTERIOR ELEVATIONS	
A81 INTERIOR ELEVATIONS	
A82 INTERIOR ELEVATIONS	
A83 INTERIOR ELEVATIONS	
A84 INTERIOR ELEVATIONS	
A85 INTERIOR ELEVATIONS	
A86 INTERIOR ELEVATIONS	
A87 INTERIOR ELEVATIONS	
A88 INTERIOR ELEVATIONS	
A89 INTERIOR ELEVATIONS	
A90 INTERIOR ELEVATIONS	
A91 INTERIOR ELEVATIONS	
A92 INTERIOR ELEVATIONS	
A93 INTERIOR ELEVATIONS	
A94 INTERIOR ELEVATIONS	
A95 INTERIOR ELEVATIONS	
A96 INTERIOR ELEVATIONS	
A97 INTERIOR ELEVATIONS	
A98 INTERIOR ELEVATIONS	
A99 INTERIOR ELEVATIONS	
A100 INTERIOR ELEVATIONS	

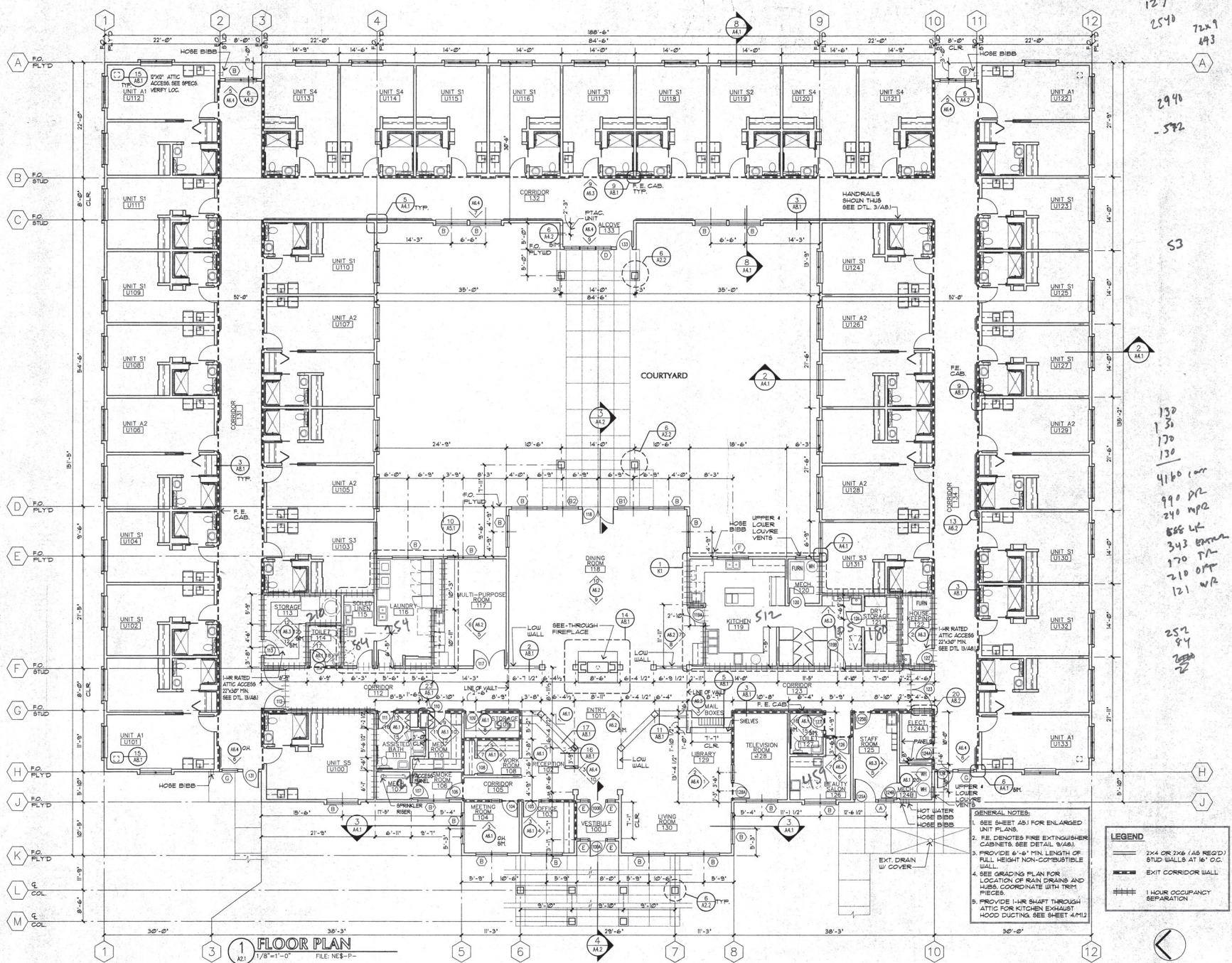
ISSUE
7/26/1991

REVISIONS

DRAWN BY
MN
JOB NO.
9712
SITE
PLAN
SHEET

A1.1

UPDATE: 12/16/97
FILE: 185-C1
© 1997 CHILLES NIELSEN + ASSOCIATES ARCHITECTS PC



127
2540
72x9
893

2940
-582

S3

130
130
170
130
4160 car
990 P/R
240 MP/R
808 LF
343 BRN
170 PA
210 O/P
121 W/R

252
84
2500
2



GN+
CHILLESS NIELSEN
+ ASSOCIATES
ARCHITECTS
pc
333 SW FIFTH AVENUE
SUITE 201
PORTLAND, OREGON
97204
503 / 227-1751
FAX: 503 / 274-8634

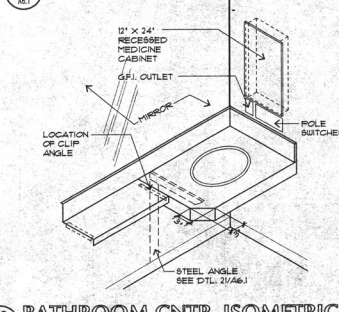
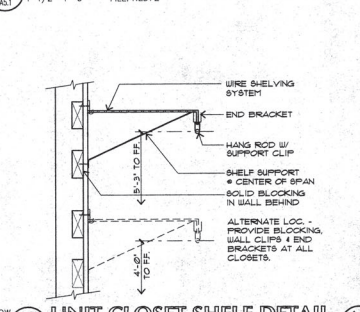
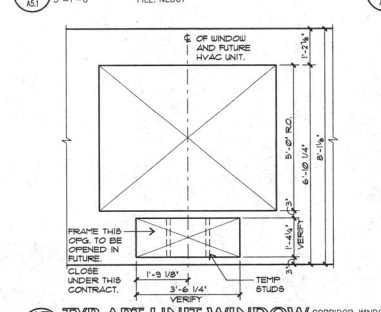
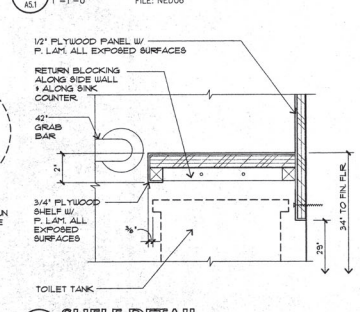
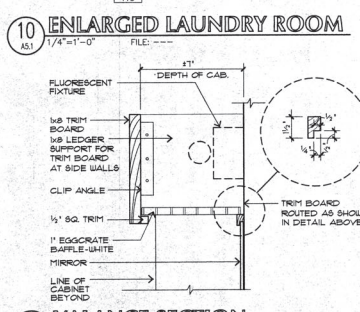
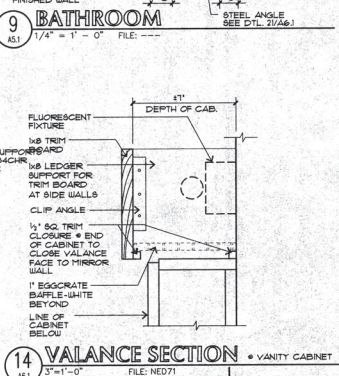
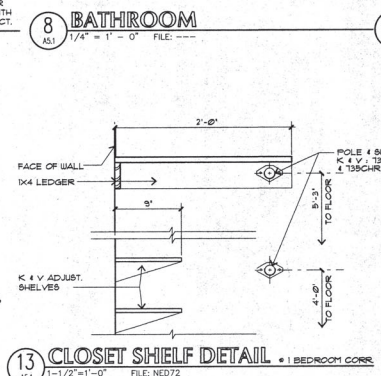
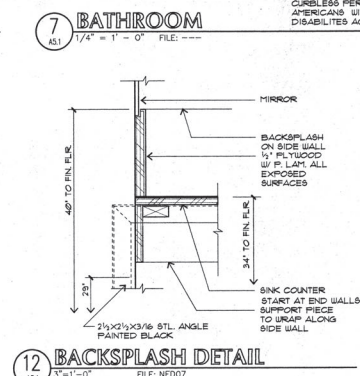
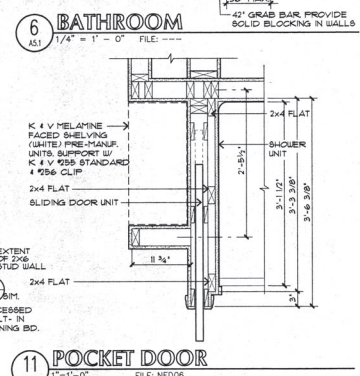
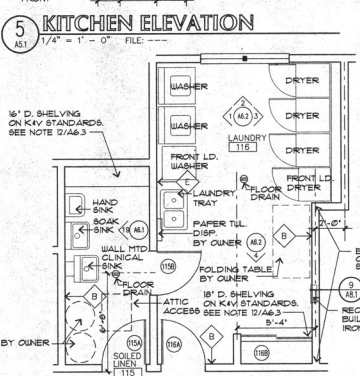
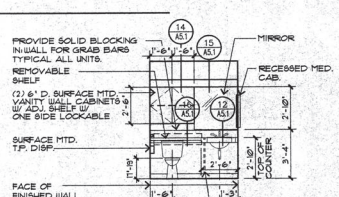
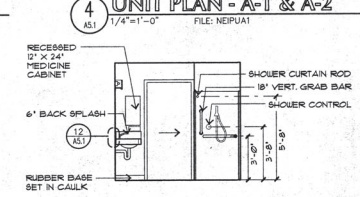
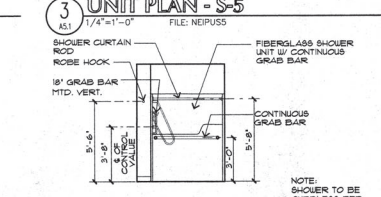
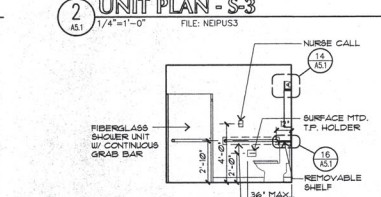
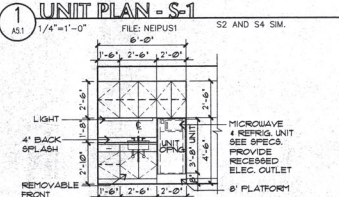
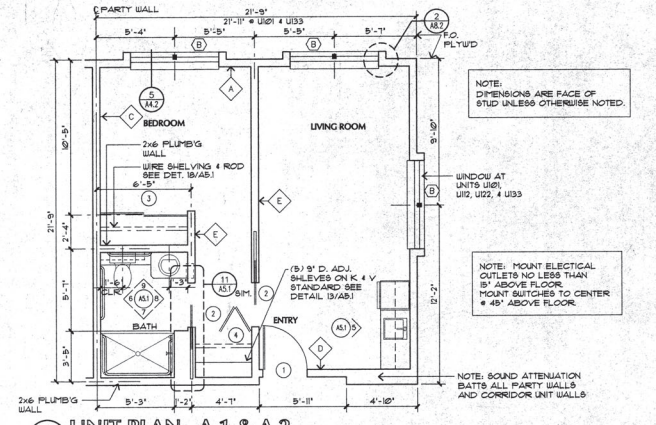
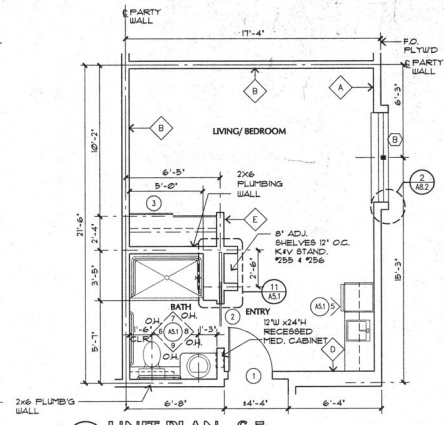
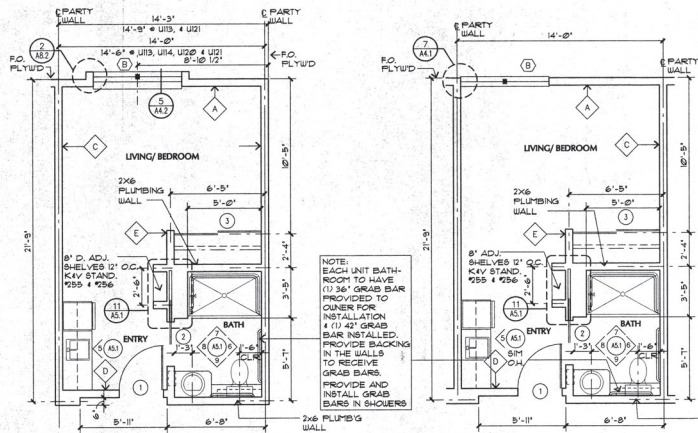
NEHALEM
ASSISTED LIVING
FACILITY
for
C.A.R.E., Inc.
NEHALEM, OREGON

GENERAL NOTES:
1. SEE SHEET A81 FOR ENLARGED UNIT PLANS.
2. P.E. DENOTES FIRE EXTINGUISHER CABINETS. SEE DETAIL 9(AA).
3. PROVIDE 6'-6" MIN. LENGTH OF FULL HEIGHT NON-COMBUSTIBLE WALL.
4. SEE GRADING PLAN FOR LOCATION OF MAIN DRAINING AND HUBS. COORDINATE WITH TRM1 PIECES.
5. PROVIDE 1-HR SHAFT THROUGH ATTIC FOR KITCHEN EXHAUST HOOD DUCTING. SEE SHEET 4(M)2.

LEGEND
— 2x4 OR 2x6 (AS REQ'D) STUD WALLS AT 16" O.C.
--- EXIT CORRIDOR WALL
--- 1 HOUR OCCUPANCY SEPARATION

FLOOR PLAN
1/8"=1'-0"
FILE: NE8-P-

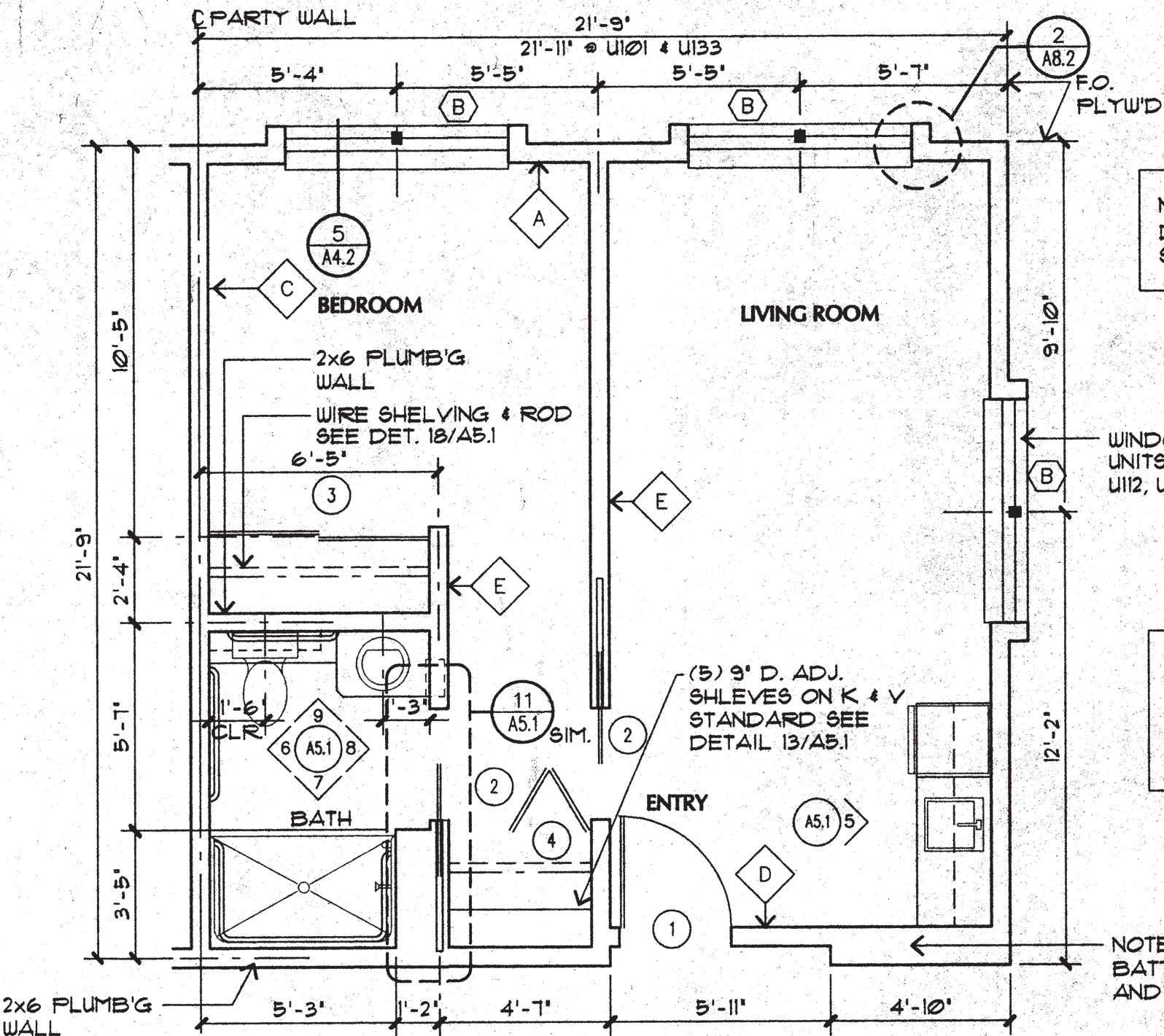
ISSUE
12/04/99
REVISIONS
DRAWN BY
TY, MN
JOB NO.
9712
FLOOR PLAN
SHEET
A2.1
UPDATE:
FILE:
© 1997 CHILLESS NIELSEN + ASSOCIATES ARCHITECTS PC
12/15/97
NE8-P



CHILLESE NIELSEN + ASSOCIATES ARCHITECTS
 pc
 333 SW FIFTH AVENUE
 SUITE 201
 PORTLAND, OREGON
 97204
 503 / 227-1751
 FAX: 503 / 274-8634

NEHALEM ASSISTED LIVING FACILITY
 for
C.A.R.E., Inc.
 NEHALEM, OREGON

ISSUE
 2/24/2021
 REVISIONS
 DRAWN BY
 TY, MN
 JOB NO.
 9712
 ENLARGED PLANS & DETAILS
 SHEET
A5.1
 UPDATE 12/16/97
 FILE: NESA-
 © 1997 CHILLESE NIELSEN + ASSOCIATES ARCHITECTS PC



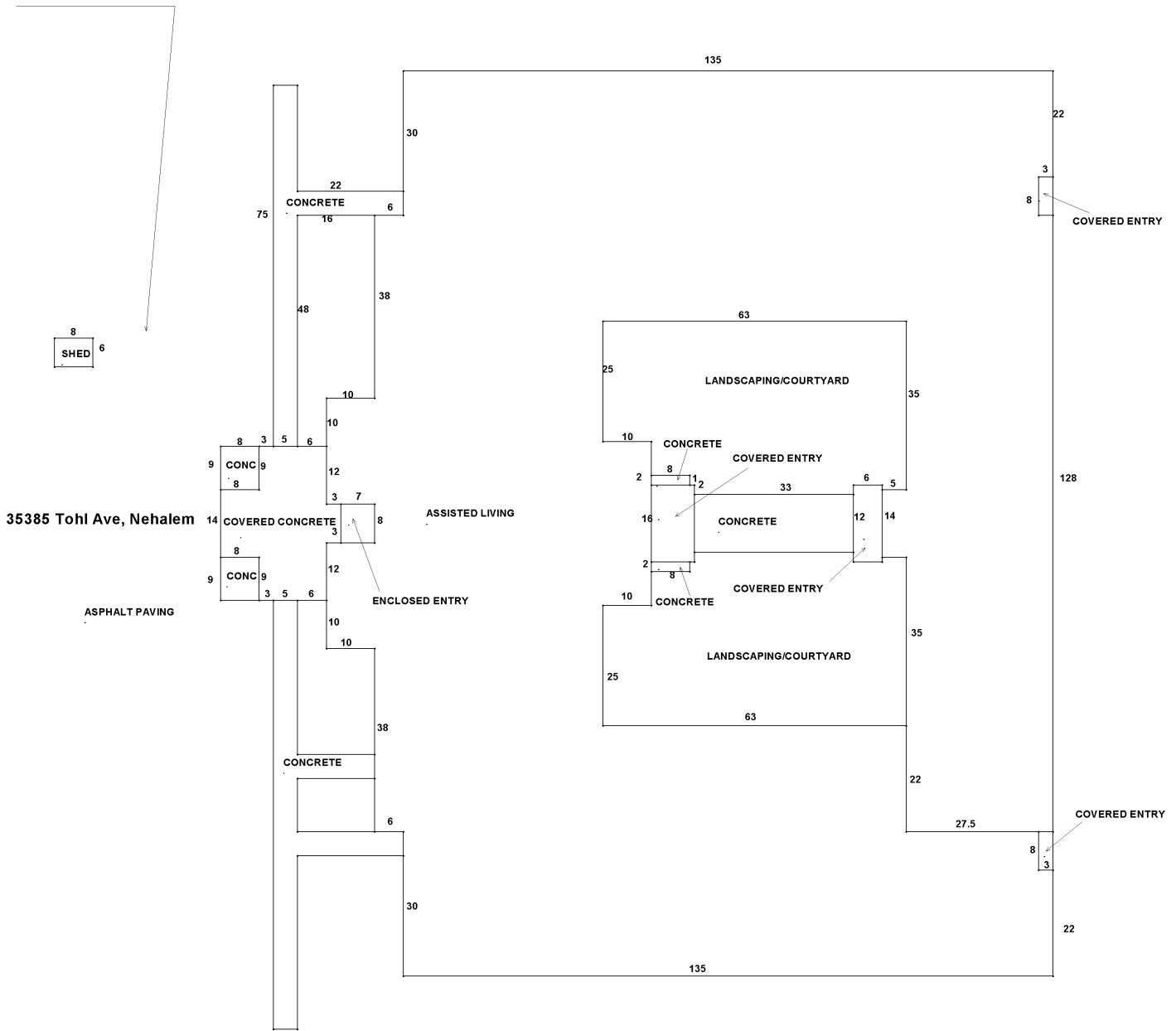
NOTE:
DIMENSIONS ARE FACE OF
STUD UNLESS OTHERWISE NOTED.

NOTE: MOUNT ELECTRICAL
OUTLETS NO LESS THAN
15" ABOVE FLOOR
MOUNT SWITCHES TO CENTER
@ 45" ABOVE FLOOR.

NOTE: SOUND ATTENUATION
BATTS ALL PARTY WALLS
AND CORRIDOR UNIT WALLS

4 UNIT PLAN - A-1 & A-2
A5.1 1/4" = 1'-0" FILE: NEIPUA1

BUILDING DIAGRAM AND OUTBUILDINGS



Appraiser
KF

Date
10/23/2008

Bldg	Description	SqFt	Dimension
1	ASSISTED LIVING	21658	
1	ENCLOSED ENTRY	56	
1	COVERED ENTRY	24	
1	COVERED ENTRY	24	
1	COVERED ENTRY	96	
1	COVERED ENTRY	144	
1	COVERED CONCRETE	584	
1	CONCRETE	396	
1	CONCRETE	16	
1	CONCRETE	16	
1	CONCRETE	485	
1	CONCRETE	635	
1	CONC	72	
1	CONC	72	
1	ASPHALT PAVING	10850	
1	SHED	48	