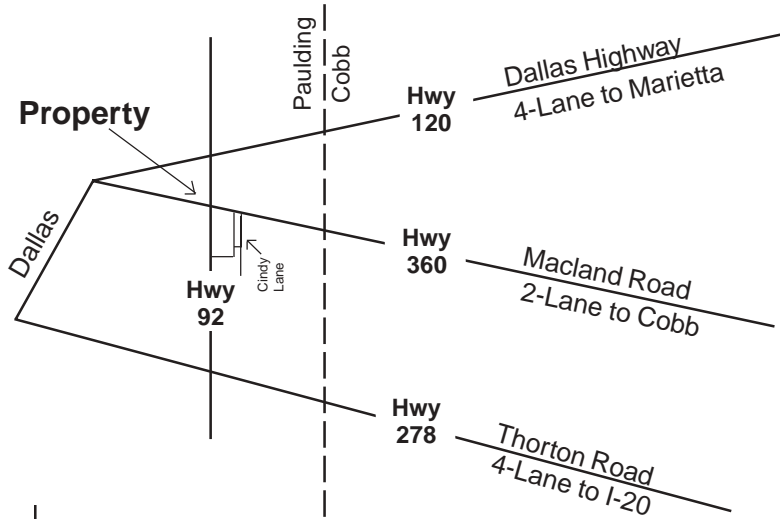




**Dave Harris Commercial Realty, Inc.**

**Prime Location — 20+- Acres**  
**Cobb Pky and Hwy 92**



**Just 1 Mile North of Hiram**  
**Hwy 360 is The Major 2-lane artery**  
**from Cobb into Paulding**

**2 Acre Tract on Corner \$600,000:**

Road Frontage = Approx. 300' on Hwy 92  
Approx. 300' on Macland Road

**18 Acres to finish the Corner \$2,430,000:**

Road Frontage = Approx. 900' on Hwy 92  
Approx. 300' on Macland Road

**Both Properties:** *Seller has stipulated to sell together*

**3 Homes on this Entire Estate**  
*(Sellers may want to relocate homes)*

Zoned Residential

**Sewer** is in lower southeast corner of the 18 acre tract.

**3 Acres @ Cindy Lane also Available.**

**Corners to North are both Commercial.**

***Dave Harris Realty***

**Jim Shurling**  
**Pat Braithwaite**

**770-445-2127**

Information herein deemed reliable, but is subject to change without prior notice. Drawings are not to scale.