

Office | For Sale

CBRE

2540 & 2530 Kensington Rd NW

Stuart Watson

Senior Vice President

+1 403 750 0540

stuart.watson@cbre.com

Katie Sapieha

Senior Vice President

+1 403 750 0529

katie.sapieha@cbre.com

Sara Atchison

Sales Associate

+1 403 750 0526

sara.atchison@cbre.com



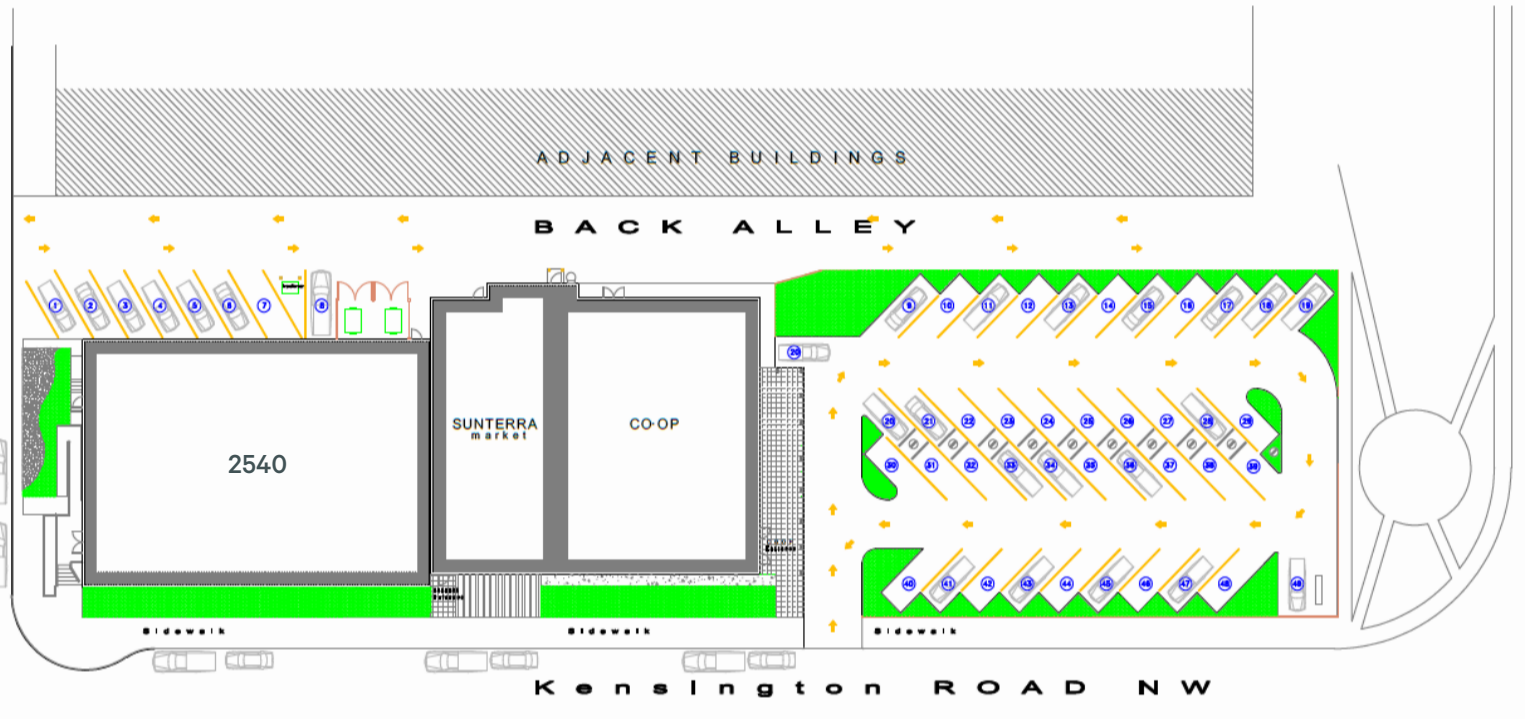
2540 & 2530 Kensington

Property Information

Year Built	1970/2012		
Legal Address	2540:	3807GK:1:7 3807GK:1:8	2530: 3807GK:1:4 3807GK:1:5 3807GK:1:6 3807GK:1:7
Zoning	C-COR2		
Available Area	2540:	Lower Level: 5,951 SF Main Floor: 6,083 SF Second Floor: 7,040 SF Third Floor: 6,984 SF Total: 26,058 SF	2530: Co-op: 5,059 SF Sunterra: 4,664 SF Total: 9,723 SF
Site Size	0.85 Acres		
Parking	49 Parking Stalls. \$100/month/stall		
Operating Costs	2540: \$5.74 PSF 2530: Co-op: \$10.87 PSF Sunterra: \$5.50 PSF		
Sale Price	Contact Agent		
Property Tax	2540: \$80,519/year 2530: Co-op: \$63,000/year Sunterra: \$31,000/year		
Power	1600 amps & 120/209 volts		

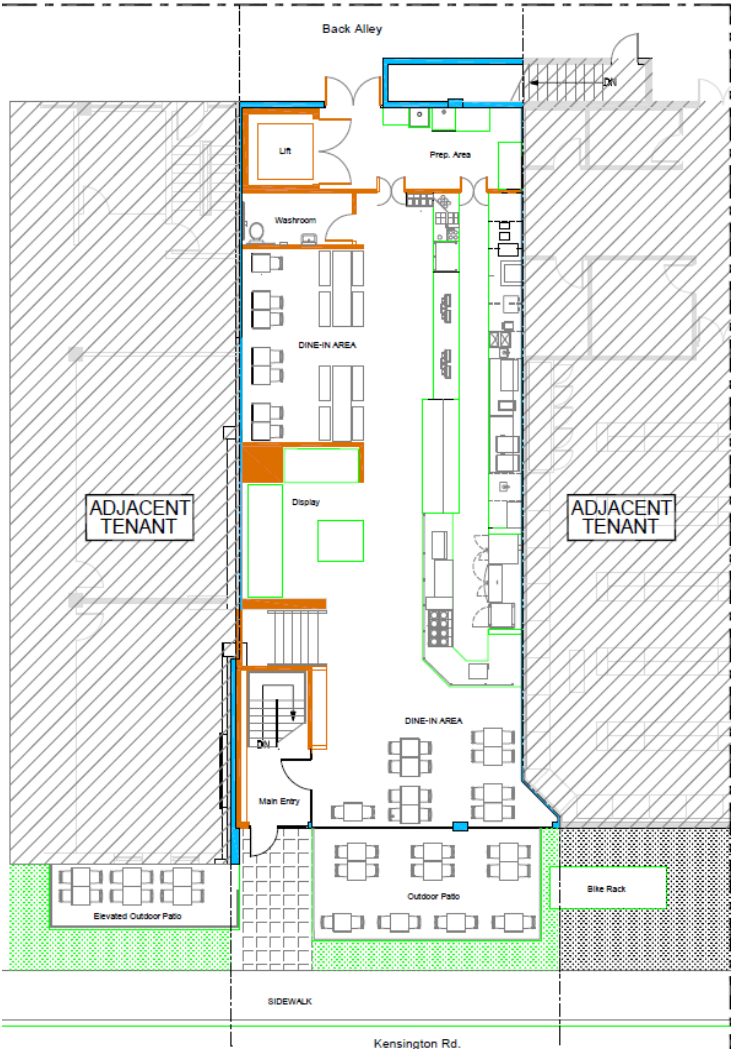
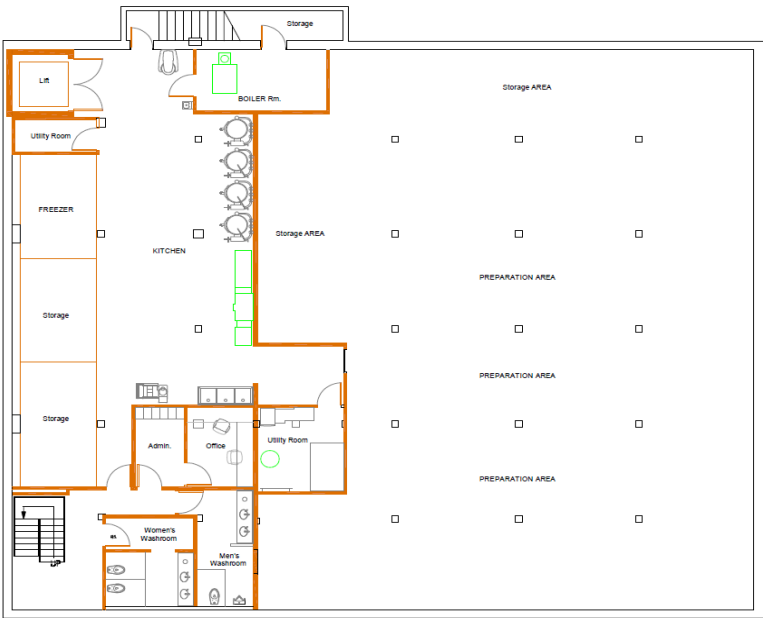


Site Plan

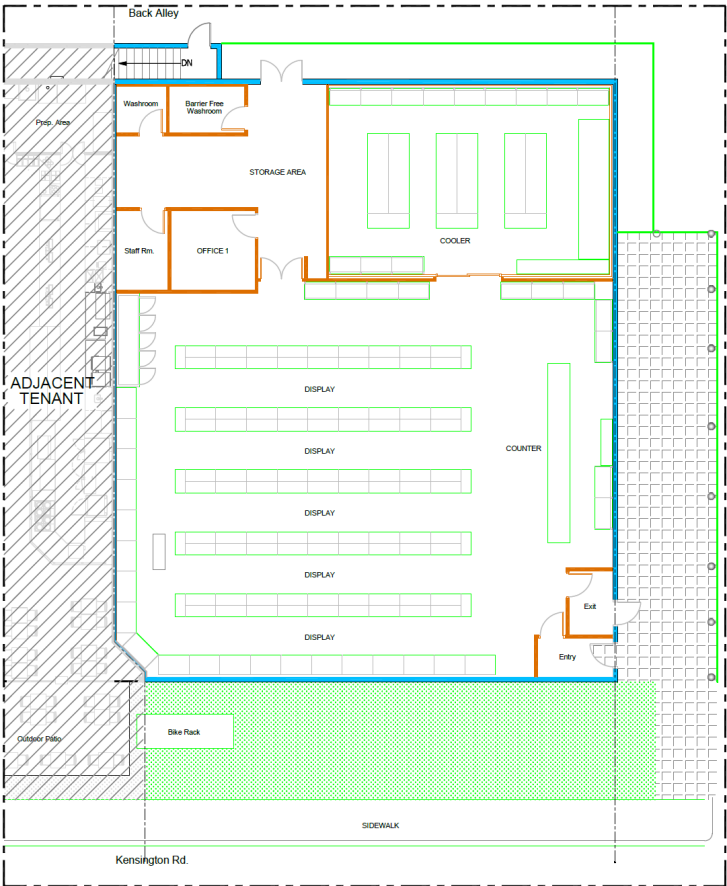


Retail Building - 2530 Kensington

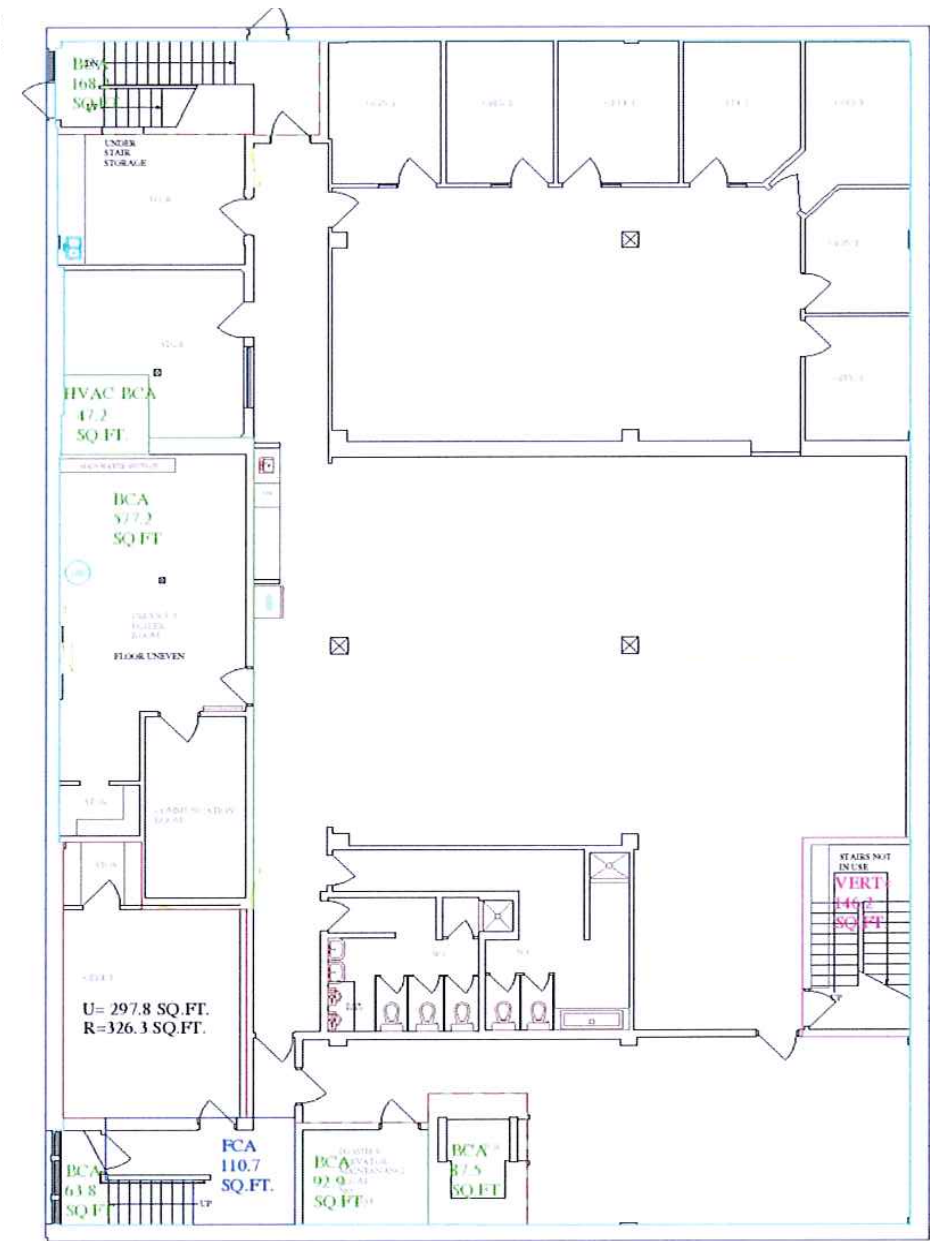
Sunterra Market



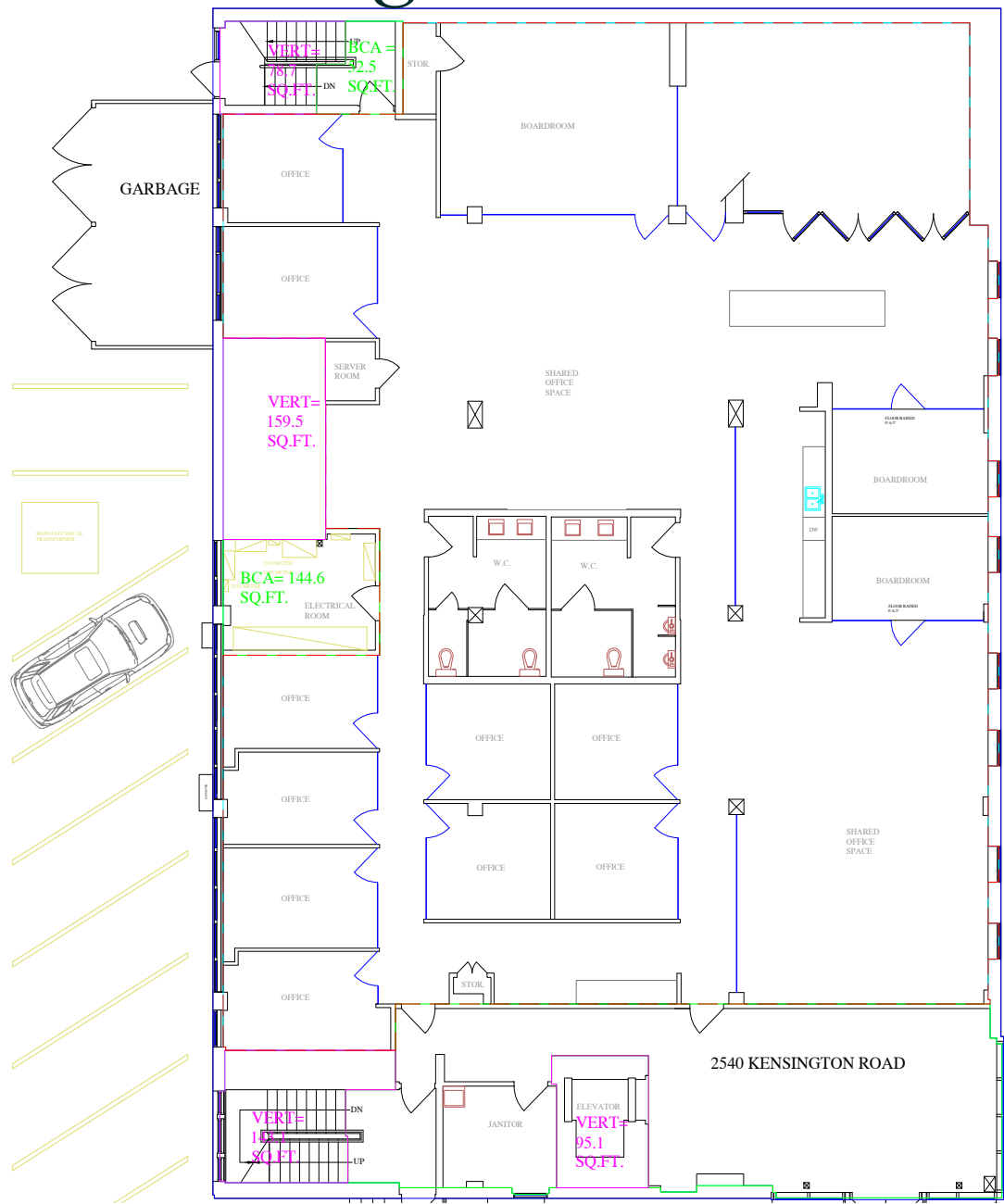
Co-op Liquor



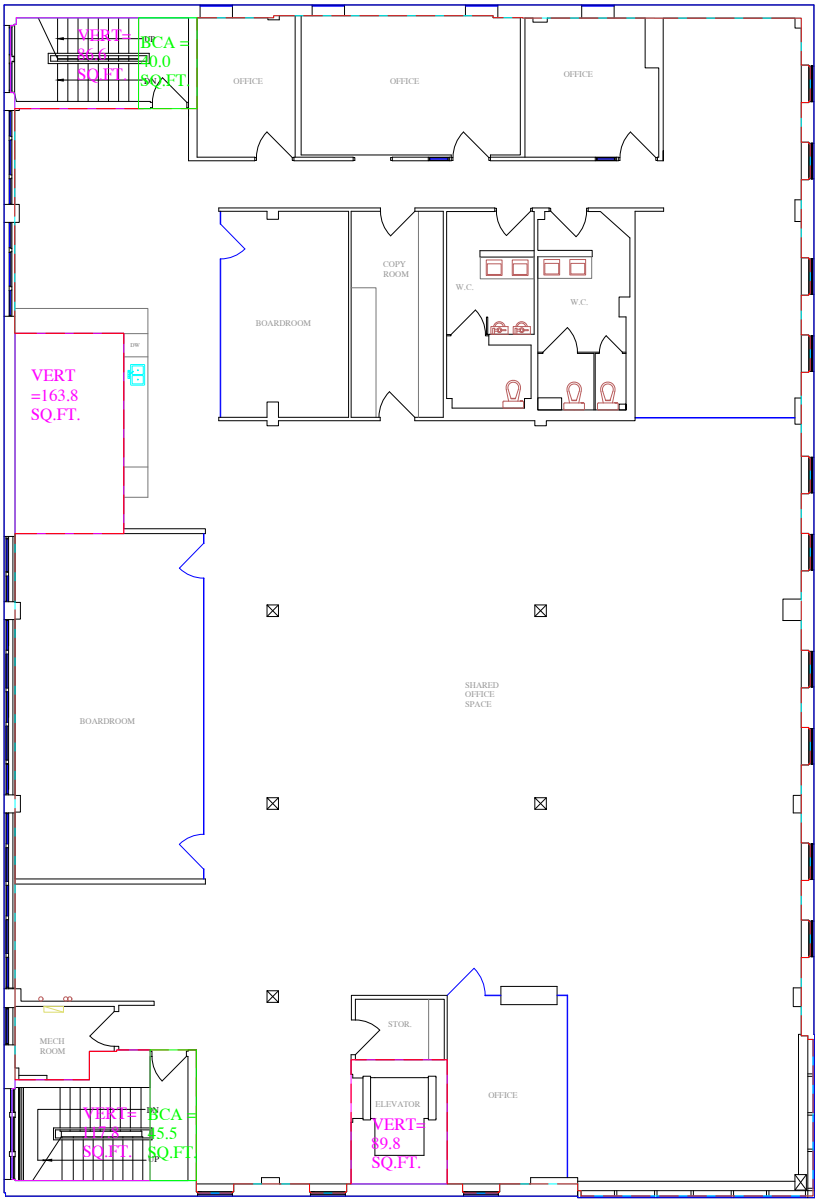
Office Building - Lower Level



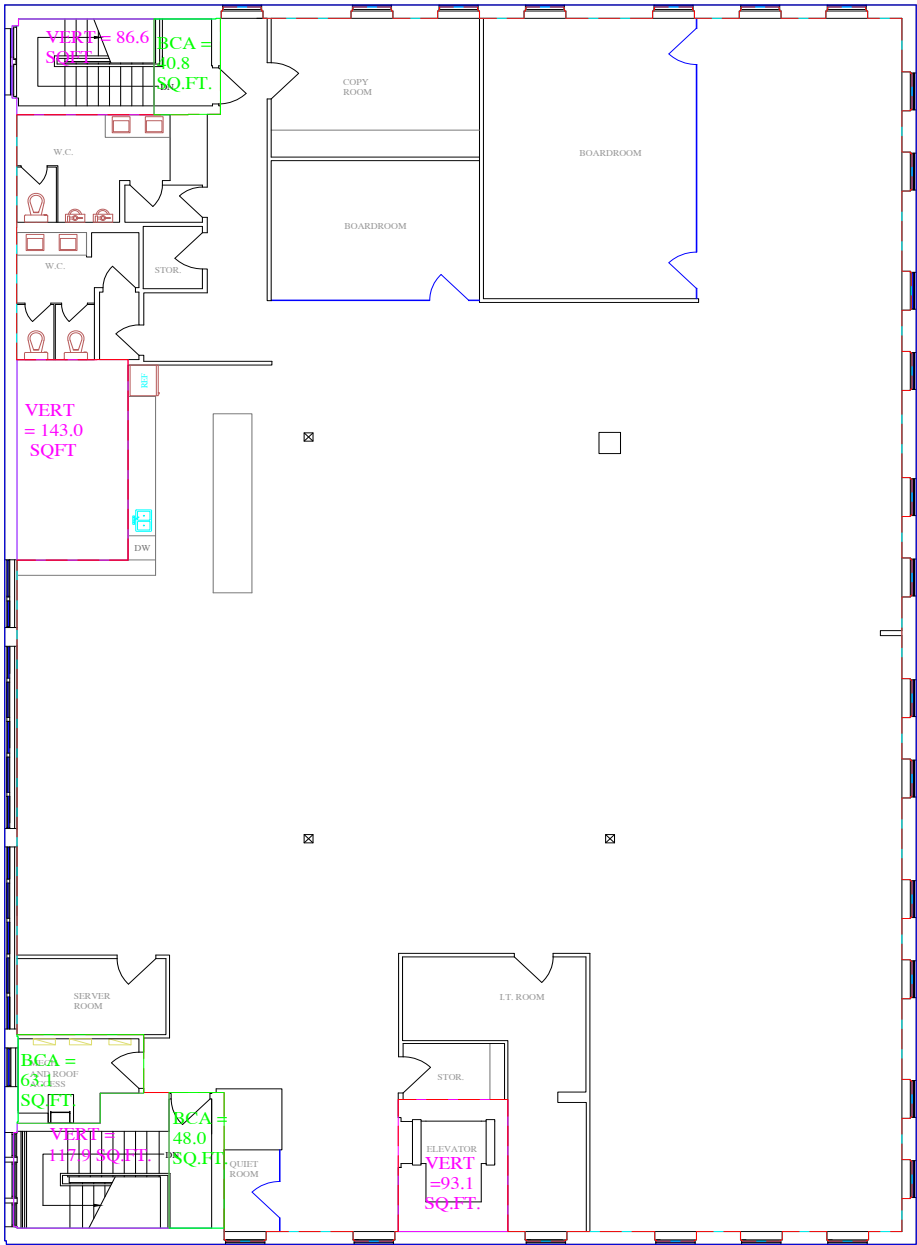
Office Building - Main Floor



Office Building - Second Floor



Office Building -Third Floor



Location





Contact Us

Stuart Watson
Senior Vice President
+1 403 750 0540
stuart.watson@cbre.com

Katie Sapieha
Senior Vice President
+1 403 750 0529
katie.sapieha@cbre.com

Sara Atchison
Sales Associate
+1 403 750 0526
sara.atchison@cbre.com

This disclaimer shall apply to CBRE Limited, Real Estate Brokerage, and to all other divisions of the Corporation; to include all employees and independent contractors ("CBRE"). All references to CBRE Limited herein shall be deemed to include CBRE, Inc. The information set out herein, including, without limitation, any projections, images, opinions, assumptions and estimates obtained from third parties (the "Information") has not been verified by CBRE, and CBRE does not represent, warrant or guarantee the accuracy, correctness and completeness of the Information. CBRE does not accept or assume any responsibility or liability, direct or consequential, for the Information or the recipient's reliance upon the Information. The recipient of the Information should take such steps as the recipient may deem necessary to verify the Information prior to placing any reliance upon the Information. The Information may change and any property described in the Information may be withdrawn from the market at any time without notice or obligation to the recipient from CBRE. CBRE and the CBRE logo are the service marks of CBRE Limited and/or its affiliated or related companies in other countries. All other marks displayed on this document are the property of their respective owners. All Rights Reserved.