

\$750 per month**225 N Main Street
North Webster, IN 46555****PROPERTY HIGHLIGHTS**

Lease Price: \$750 per month

Total Size: 822 sf

Layout: Reception area/waiting room, 2
private offices, break area, 1 bathroom,

Zoning: Commercial

Restrooms: 1

Utilities: City sewer & water

**PROPERTY DETAILS**

Prime Commercial Space in the Heart of North Webster!

Suite C at 225 N Main Street is a versatile and highly visible commercial space located in the center of North Webster's gorgeous downtown. The 10x 12 reception area and two 9x12 offices make this space perfect for office or service-based businesses. The location provides excellent foot traffic from nearby shops and local events with 9,354 cars passing by daily. Situated along Main Street with convenient parking and easy access, it's an ideal location to grow your business in a vibrant, small-town community.

Rate: \$750 per month

Inquire today to schedule a private showing and learn more about this exceptional opportunity!

Make contact.

Brycen Wrigley
Broker
Cell: 574-849-7221
Direct: 574-501-3201
brycen@endeavour-grp.com

Endeavour Commercial
22047 Endeavour Dr., Elkhart, IN 46514
P 574-292-7995
endeavour-grp.com



ENDEAVOUR
COMMERCIAL

OFFICE SPACE FOR LEASE



Make contact.

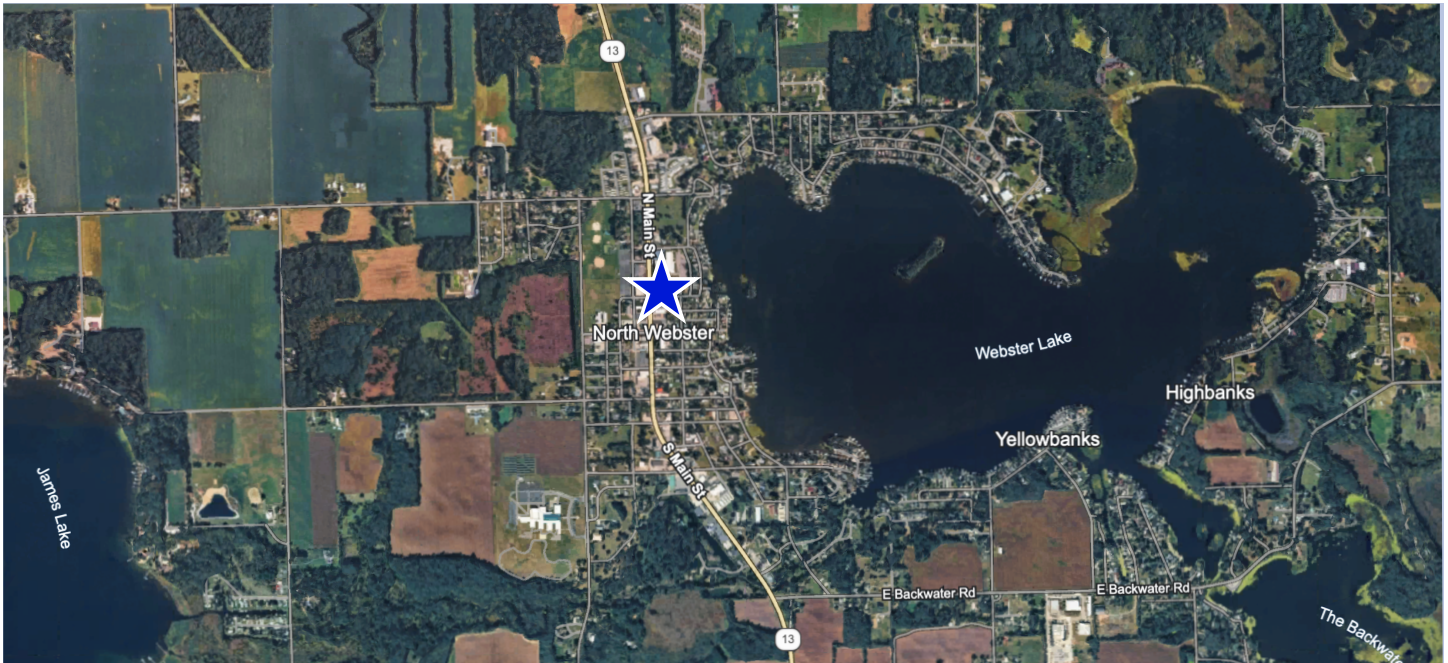
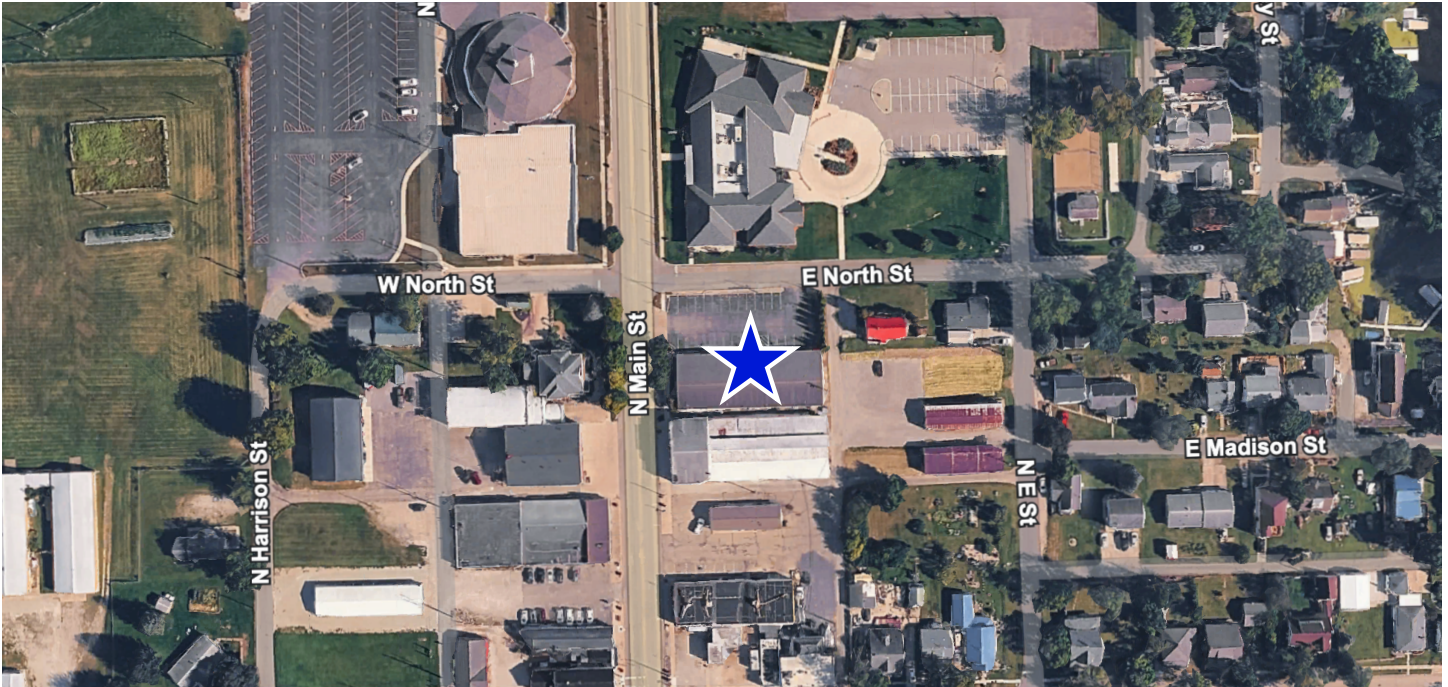
Brycen Wrigley
Broker
Cell: 574-849-7221
Direct: 574-501-3201
brycen@endeavour-grp.com

Endeavour Commercial
22047 Endeavour Dr., Elkhart, IN 46514
P 574-292-7995
endeavour-grp.com



ENDEAVOUR
COMMERCIAL

OFFICE SPACE FOR LEASE



Make contact.

Brycen Wrigley
Broker
Cell: 574-849-7221
Direct: 574-501-3201
brycen@endeavour-grp.com

Endeavour Commercial
22047 Endeavour Dr., Elkhart, IN 46514
P 574-292-7995
endeavour-grp.com