

FOR LEASE



COCONUT CREEK MEDICAL CENTER

4848 Coconut Creek Parkway, Coconut Creek, FL

CBRE

PREMIER MEDICAL OFFICE BUILDING

CBRE South Florida Healthcare, as exclusive leasing agent, is pleased to present 4848 Coconut Creek Parkway, a premier medical office building within Strada Coconut Creek, a revitalized mixed-use development anchored by Sprouts Farmers Market.

The property features Genesis Care's advanced radiation oncology center and offers diverse leasing options. Recently acquired by CoreGro, a premier owner and operator of medical office properties, this property combines strategic location, flexibility, and modern amenities, making it an ideal choice for medical providers seeking to establish or expand in the dynamic Coconut Creek market.



PROPERTY HIGHLIGHTS

30K SF

BUILDING SIZE

3

STORIES

2008

YEAR BUILT

12'

SLAB TO SLAB

PCD

ZONING



AVAILABILITIES

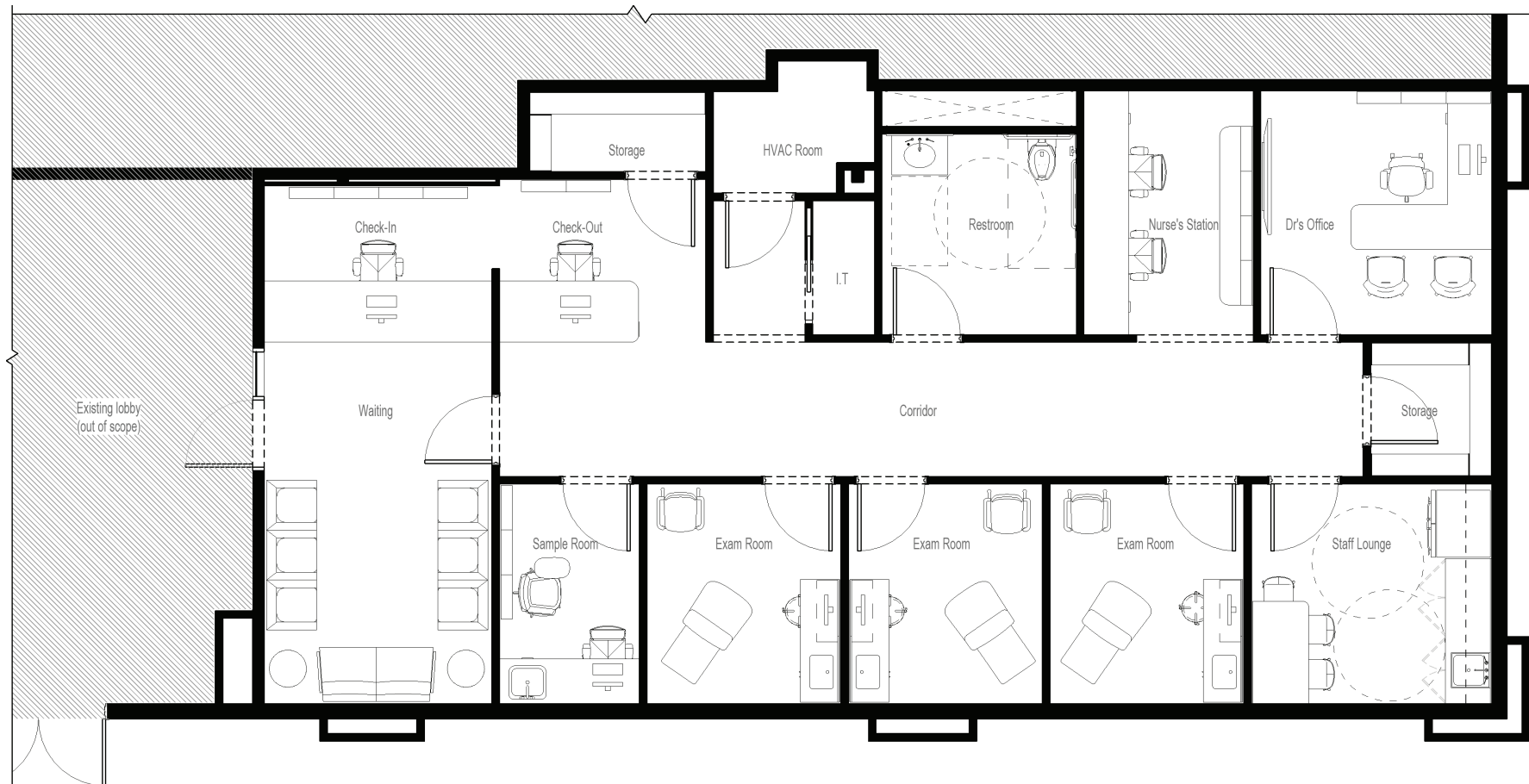
Premises	RSF	Comments
Ground Floor	1,488	Ready to build
Suite 200	5,000	Move-in ready
Suite 201	1,600 – 5,340 (Divisible)	Core and shell
Suite 300	10,340 (Divisible)	Core and shell



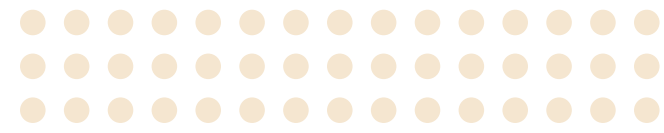
\$30.00/SF
Asking Rate

GROUND FLOOR

KEY PLAN

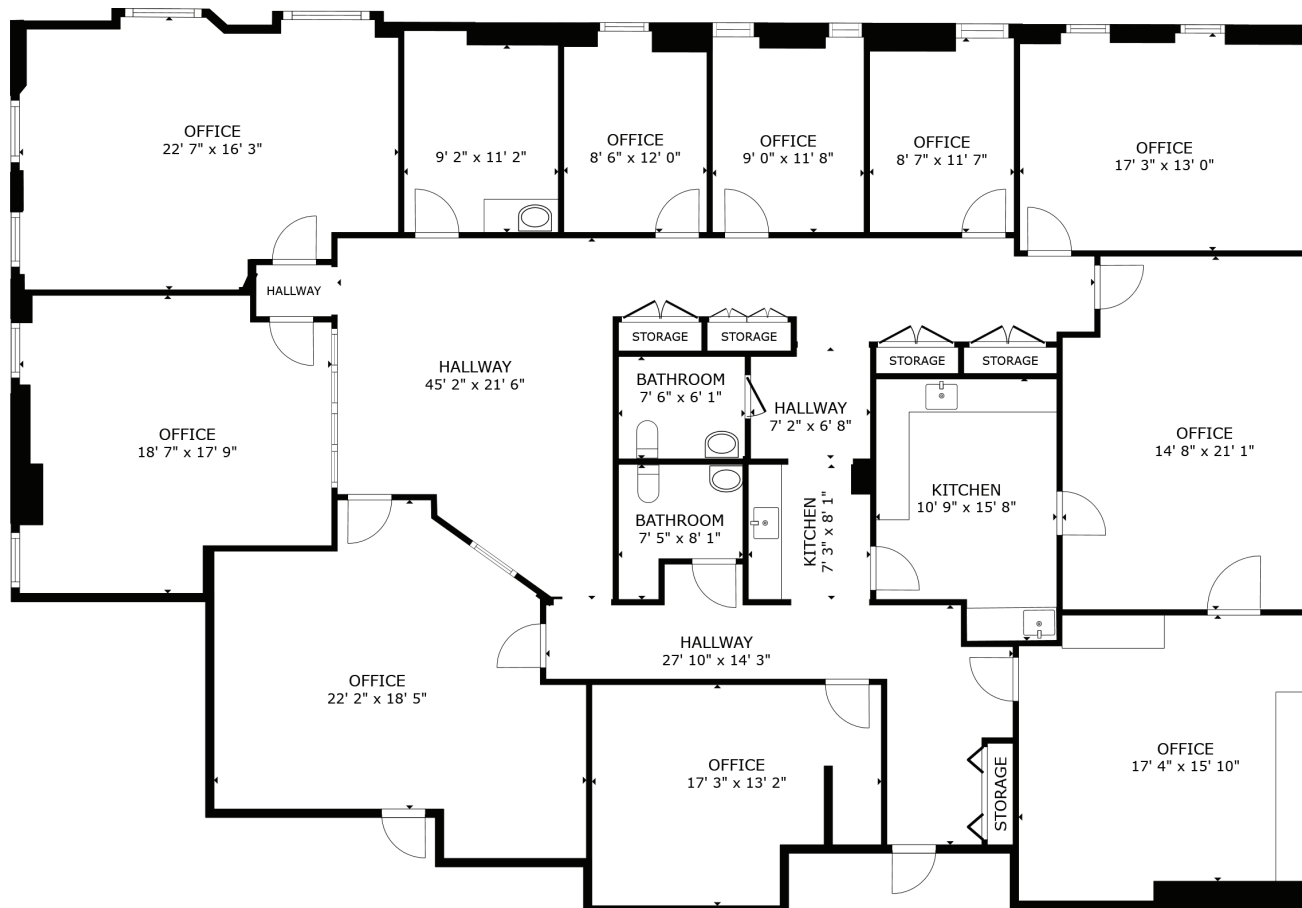


TEST FIT - 1,488 SF

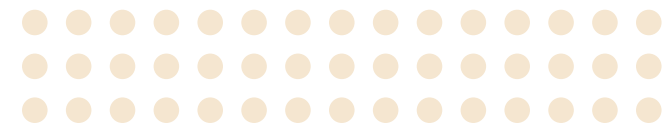


SUITE 200

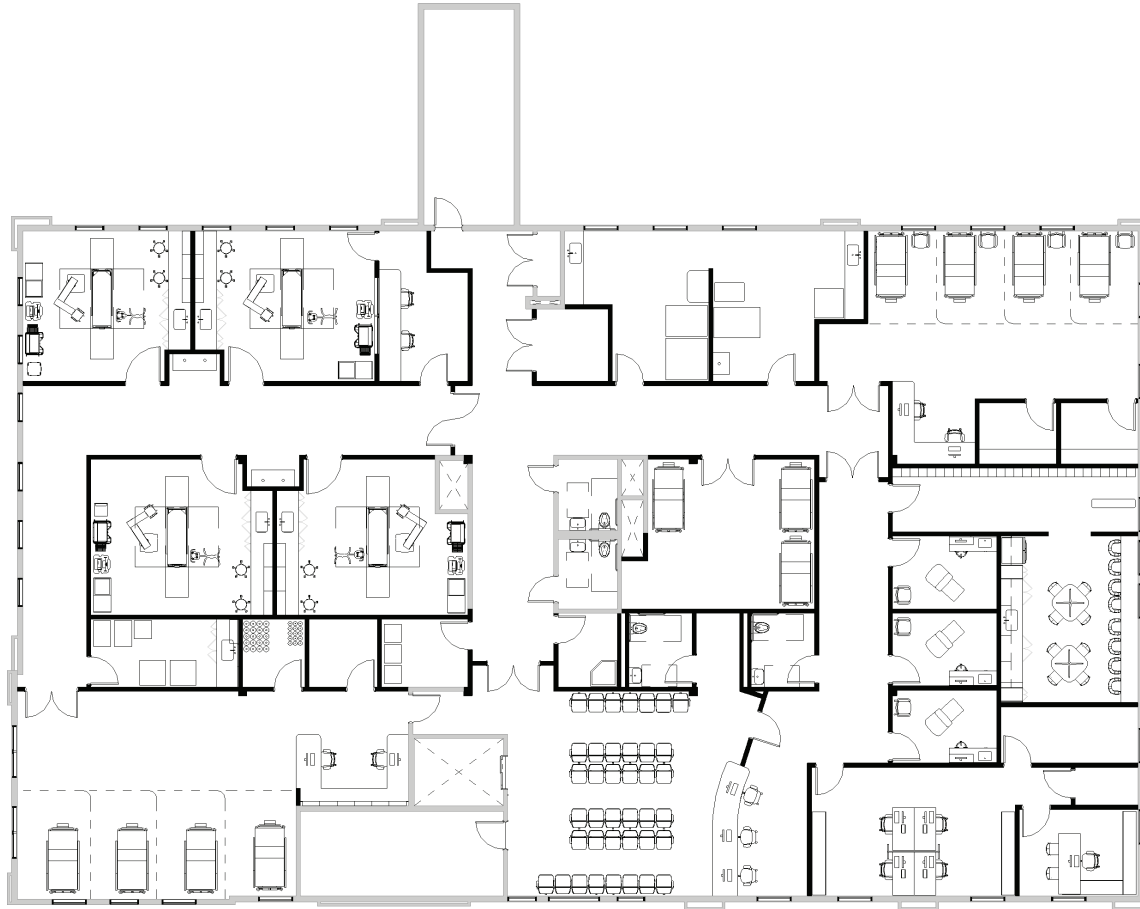
KEY PLAN



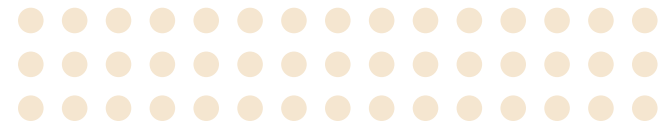
EXISTING CONDITIONS – 5,000 SF (DIVISIBLE)



SUITE 300



TEST FIT - 10,340 SF (DIVISIBLE)



SITE PLAN



SPROUTS
FARMERS MARKET

CALICOFFEE

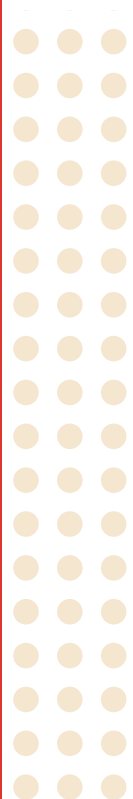
Walgreens

CONVIVA
Care Center

REGIONS

LYONS ROAD - 23,000 AADT

COCONUT CREEK PARKWAY - 19,000 AADT





IN GOOD COMPANY

Strada Coconut Creek, a revitalized 150K-SF mixed-use development, is anchored by Sprouts Farmers Market. Neighboring tenants include Walgreens, Regions Bank, Conviva Care Center, and Cali Coffee



Signalized Corner Location

Excellent visibility with 42,000 VPD total and full access from both roads



Dense In-Fill Market

High barriers to entry (139,134 people and 63,112 employees within 3 miles)



Dynamic Trade Area

Proximity to several demand generators including Wynmoor, a 55+ community with over 9,000 residents, Northwest Medical Center (289 beds), Broward College (33,243 students) and Atlantic Technical College



Genesis Care

Operating at this location since 2013 and operates 256 cancer treatment centers, making it one of the largest providers of cancer care in the U.S.

AREA DEMOGRAPHICS

	1 MILES	3 MILES	5 MILES
PLACE OF WORK			
Businesses	1,084	7,251	23,522
Employees	8,566	63,112	206,327
POPULATION			
Population	15,101	139,134	409,728
Median Age	48.6	43.3	41.1
HOUSEHOLDS			
Households	7,356	56,969	158,842
Average Household Income	\$122,457	\$94,392	\$96,891

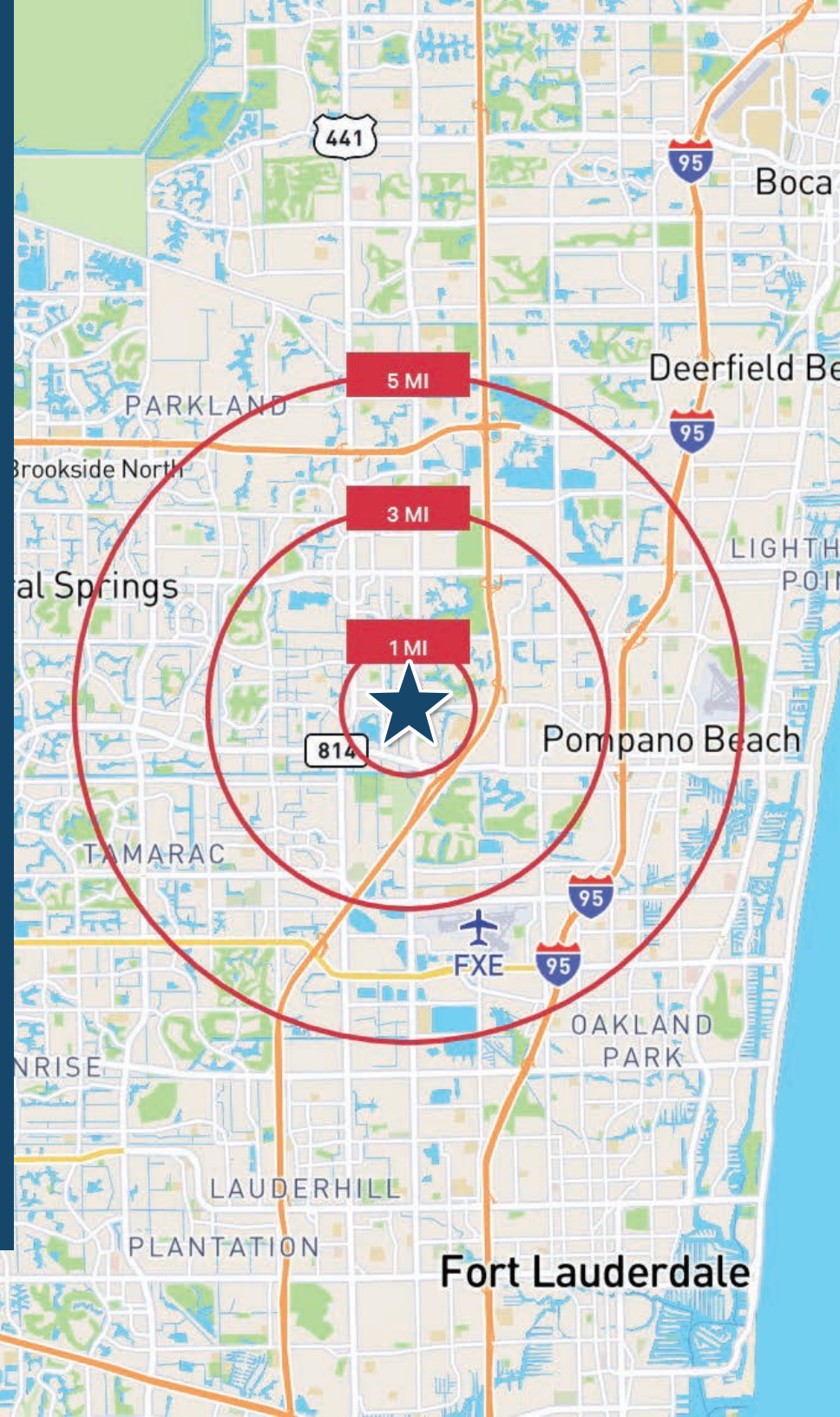
Source: Esri ProjectID 1670834

Florida's Turnpike

±1.6 Miles | ±4 Minutes

Interstate 95

±3.6 Miles | ±9 Minutes



COCONUT CREEK, FL

